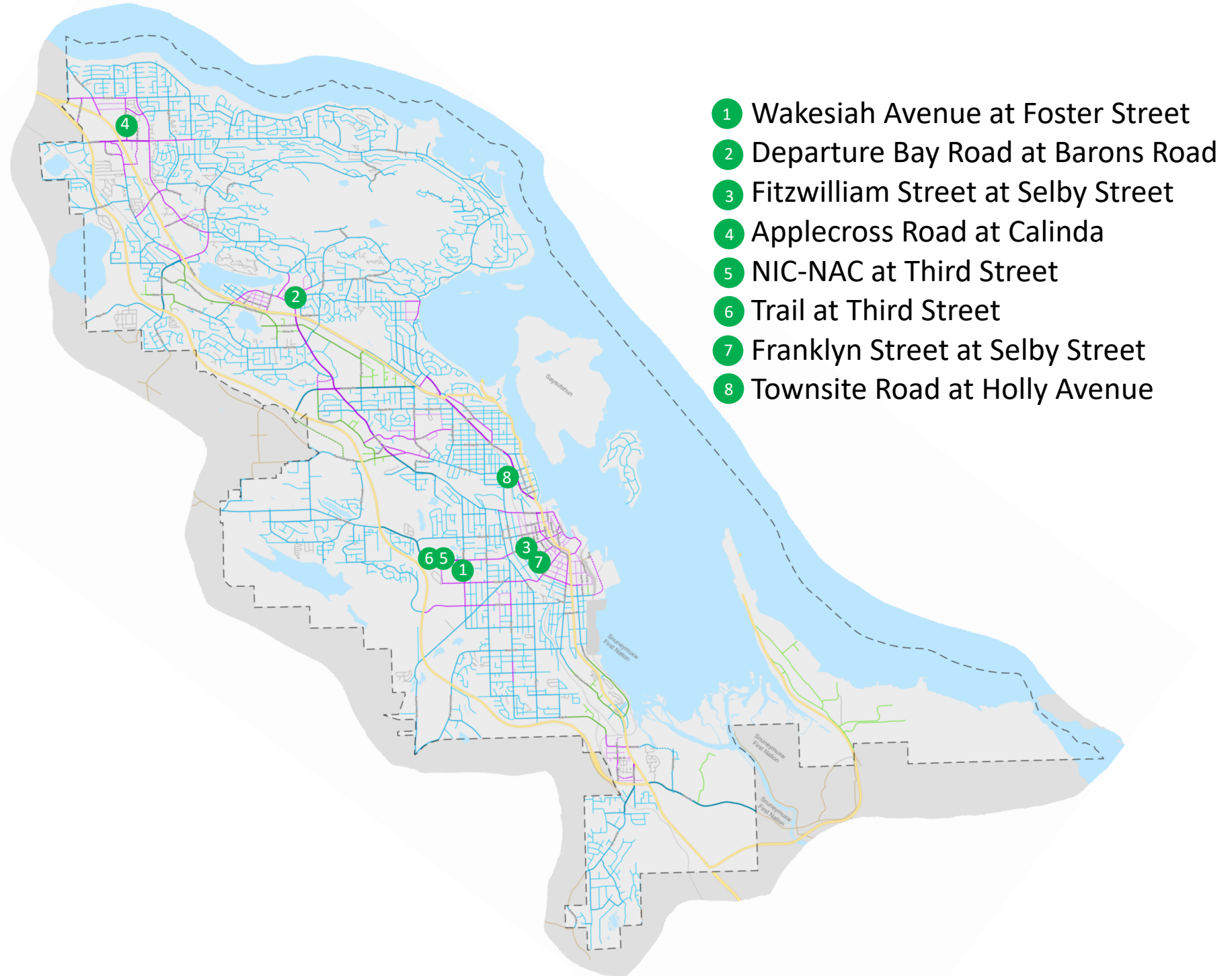


# MAP 1: Proposed Improvements to the Trans-Canada Highway



- 1 Improve signal timing at Maki/Tenth
- 2 Lengthen northbound left turn lane
- 3 Construct a sidewalk
- 4 Construct southbound deceleration lane
- 5 Improve signal timing at Cranberry
- 6 Lengthen northbound left turn lane

# MAP 2: 2022 Proposed Crosswalk Improvements

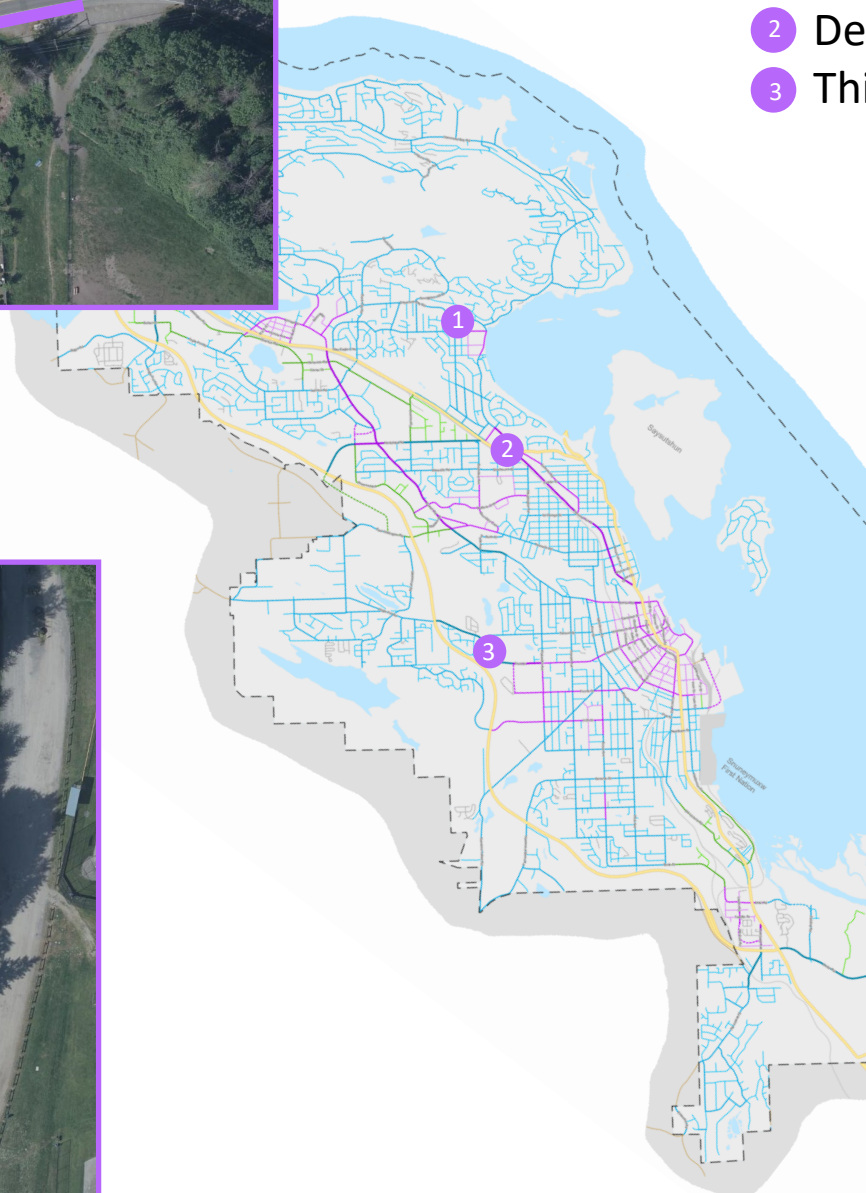
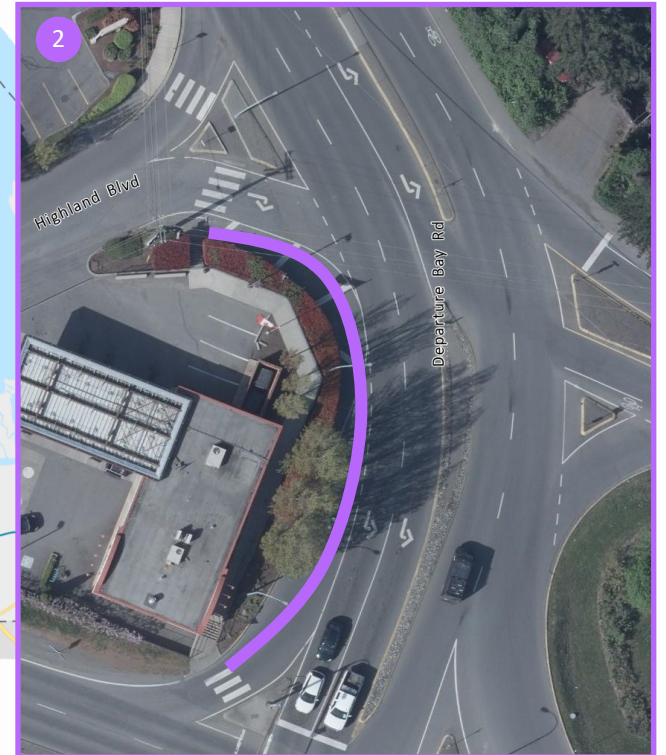
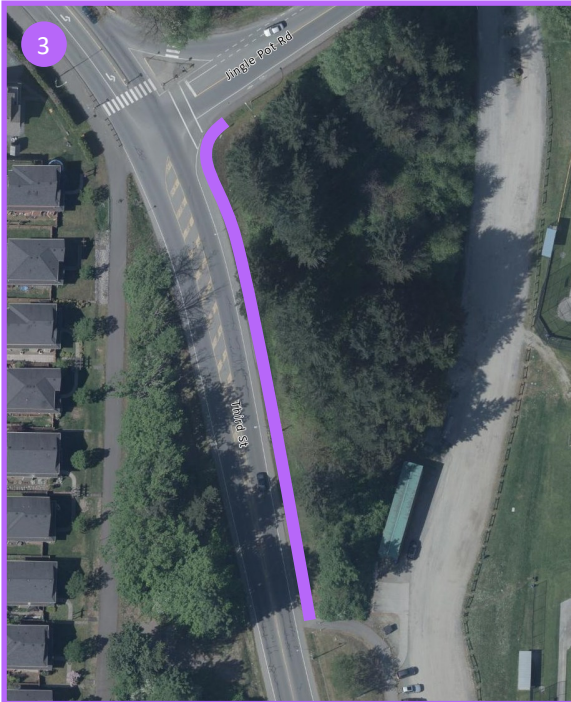




# MAP 3: 2022 Proposed Sidewalk Improvements

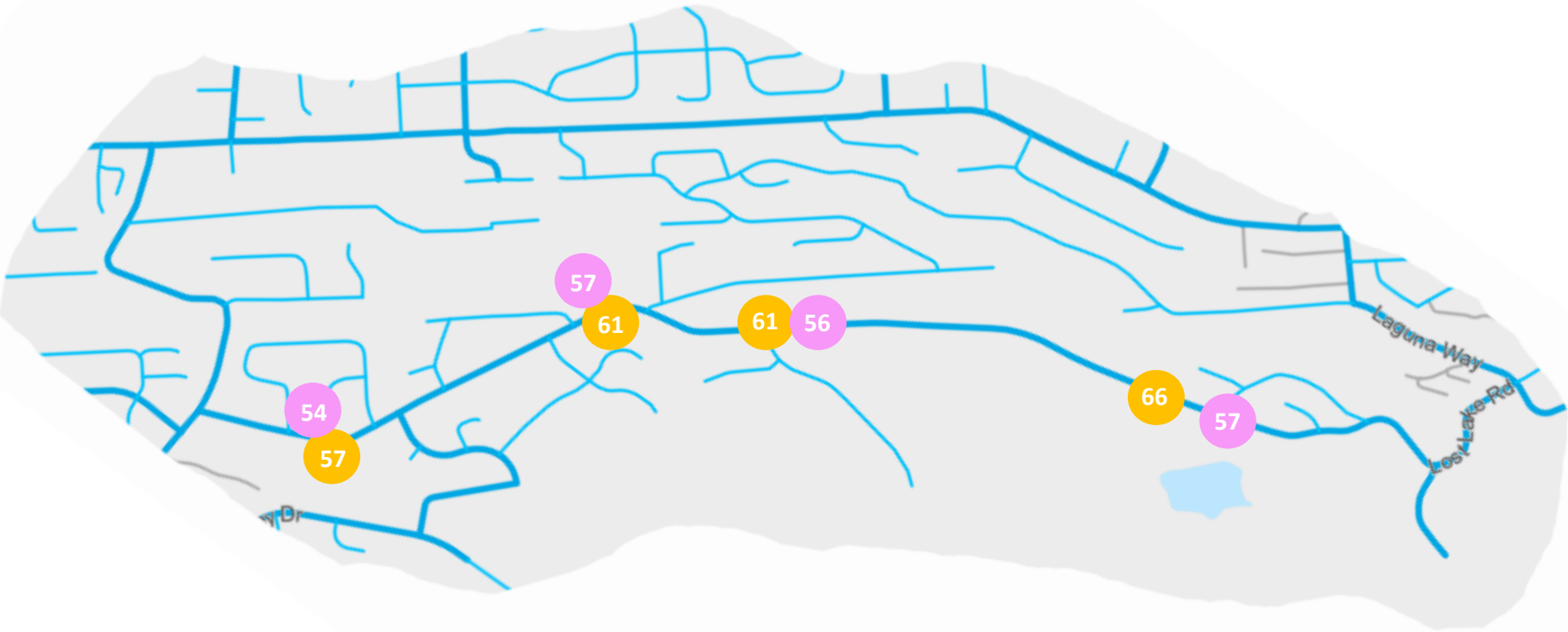


- 1 Departure Bay Road south side
- 2 Departure Bay Road north side
- 3 Third Street east side



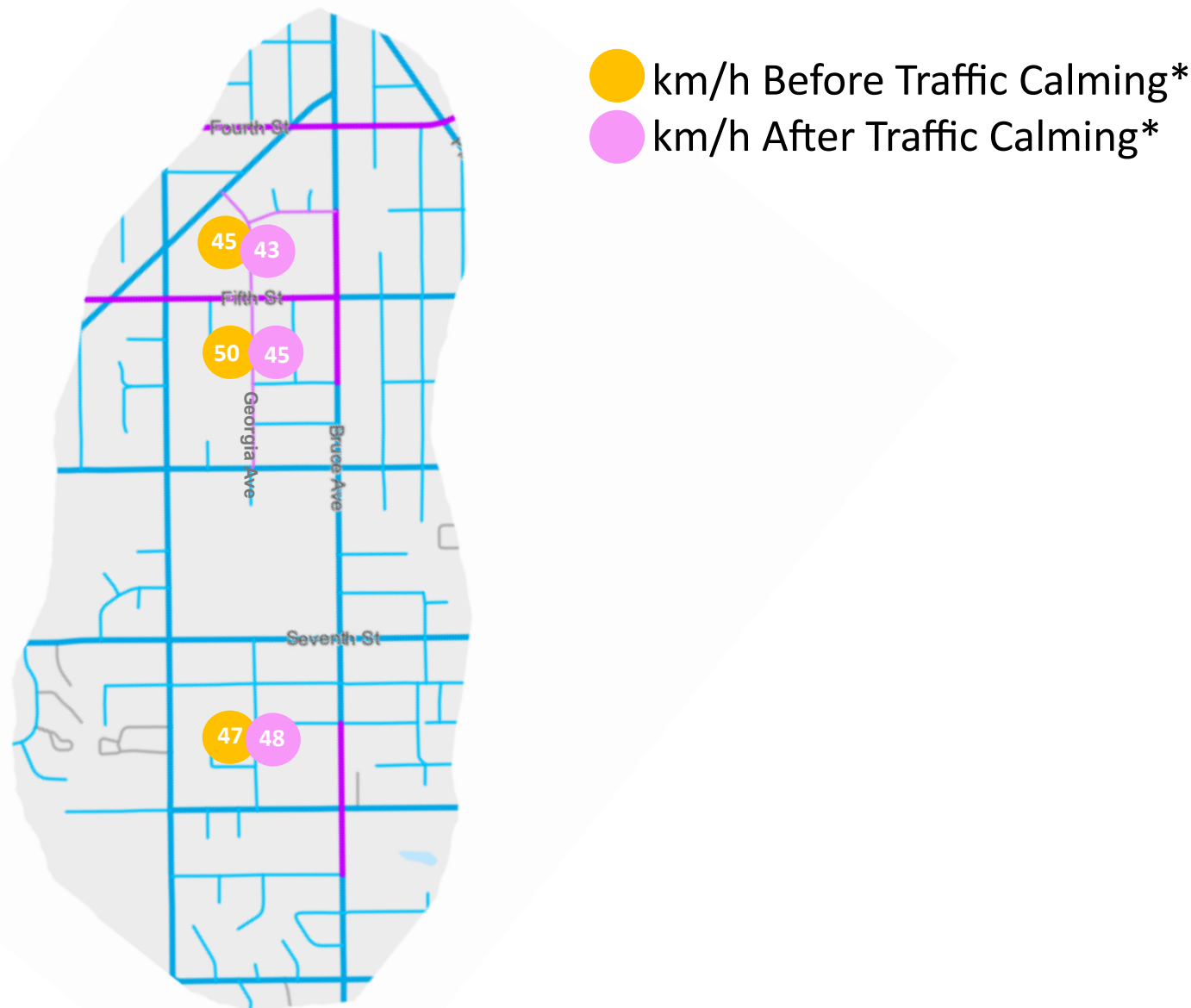
# MAP 4: Speeds on Lost Lake Road Before and After Traffic Calming

- km/h Before Traffic Calming\*
- km/h After Traffic Calming\*



\*Note: At or below which 85 per cent of vehicles travel.

# MAP 5: Speeds on Georgia Avenue Before and After Traffic Calming



\*Note: At or below which 85 per cent of vehicles travel.