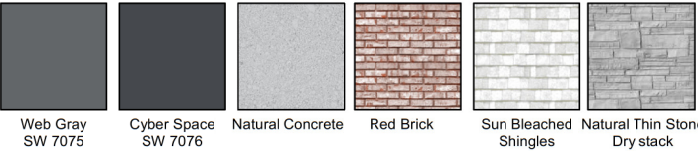


ATTACHMENT E BUILDING ELEVATIONS AND DETAILS



Material List

- 1 Fiber Cement Shingle (colour - Warm Sun Bleached White)
- 2 Cement Panel - Hardie Panel - Smooth - (colour - Warm White)
- 3 Cement Panel - Hardie Panel - Smooth - (colour - Web Grey - SW 7075)
- 4 Natural Concrete
- 5 Natural Thin Stone
- 6 Window Frame (colour - Cyber Space - SW 7076)
- 7 Door and Frame (colour - Cyber Space - SW 7076)
- 8 Glass Guard with Aluminium Frame
- 9 Flashing 1 (colour Cyber Space - SW 7076)
- 10 Flashing 2
- 11 Painted Metal Guard
- 12 Clear Vertical Grain Fir no. 1 or better - Stained Sikkens Cetol 1(translucent ext. base coat) Ceto 23 Plus (translucent ext. top coat)
- 13 Panel Joints
- 14 Privacy Screen
- 15 Wall Caps - Air Supply or Exhaust
- 16 Metal Rain Water Leaders (colour - Cyber Space - SW 7076)
- 17 Natural Concrete Detail
- 18 Metal Stair with perforated treads
- 19 Brick (Red)
- 20 Soffit (non combustible Fiber cement Cedar mill - wood stain)
- 21 Timber awning with metal roof



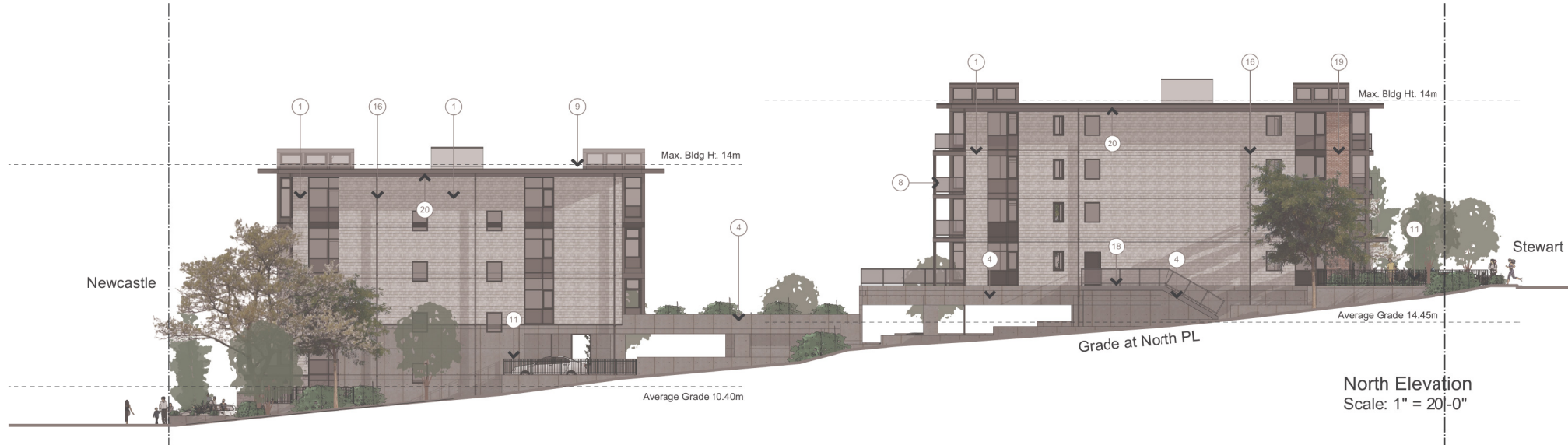
MASTHEADLIVING

360 Stewart - 345 Newcastle, Nanaimo, B.C.
2021 11 19

RECEIVED
DP1234
2022-FEB-13
Current Planning

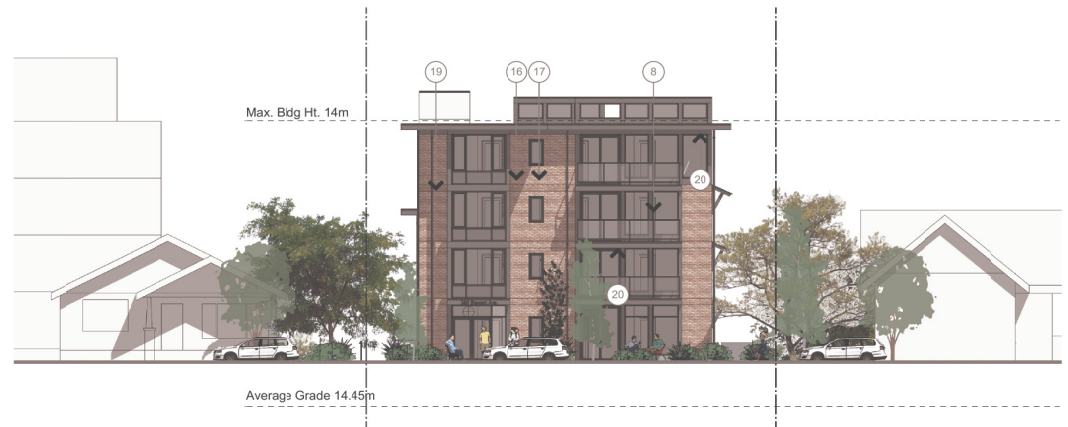
East Elevation
Scale: 1" = 20'-0"

Middleton
Architect

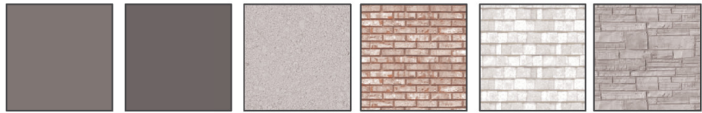


Material List

- 1 Fiber Cement Shingle (colour - Warm Sun Bleached White)
- 2 Cement Panel - Hardie Panel - Smooth - (colour - Warm White)
- 3 Cement Panel - Hardie Panel - Smooth - (colour - Web Grey - SW 7075)
- 4 Natural Concrete
- 5 Natural Thin Stone
- 6 Window Frame (colour - Cyber Space - SW 7076)
- 7 Door and Frame (colour - Cyber Space - SW 7076)
- 8 Glass Guard with Aluminium Frame
- 9 Flashing 1 (colour Cyber Space - SW 7076)
- 10 Flashing 2
- 11 Painted Metal Guard
- 12 Clear Vertical Grain Fir no. 1 or better - Stained Sikkens Cetol 1(translucent ext. base coat) Ceto 23 Plus (translucent ext. top coat)
- 13 Panel Joints
- 14 Privacy Screen
- 15 Wall Caps - Air Supply or Exhaust
- 16 Metal Rain Water Leaders (colour - Cyber Space - SW 7076)
- 17 Natural Concrete Detail
- 18 Metal Stair with perforated treads
- 19 Brick (Red)
- 20 Soffit (non combustible Fiber cement Cedar mill - wood stain)
- 21 Timber awning with metal roof



West Elevation
Scale: 1" = 20'-0"



Web Gray SW 7075 Cyber Space SW 7076 Natural Concrete Red Brick Sun Bleached Shingles Natural Thin Stone Dry stack

MASTHEADLIVING

360 Stewart - 345 Newcastle, Nanaimo, B.C.
2021 11 19

RECEIVED
DP1234
2022-FEB-13
Current Planning

Middleton
Architect