



## COUNCIL PRESENTATION

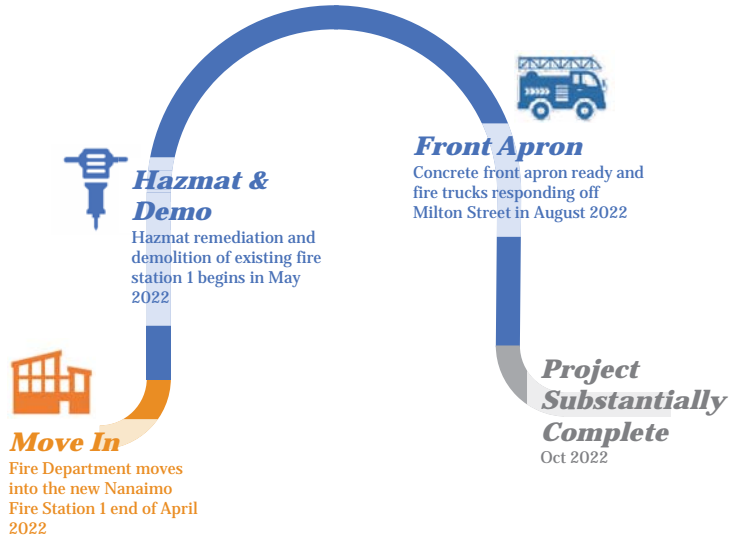
NANAIMO FIRE STATION 1



## NANAIMO FIRE STATION 1

ARCHITECT'S RENDERING

# SCHEDULE



# EXTERIOR PROGRESS

Glass installation complete

Cladding assembly complete end of March

Coordinating Lubbock Lane construction with BC Housing

Communication Tower installed



South Façade



Northeast Façade and Comms Tower



## 1<sup>st</sup> FLOOR PROGRESS



Day Room



Dorm Rooms

## 2<sup>ND</sup> FLOOR PROGRESS



Training Room



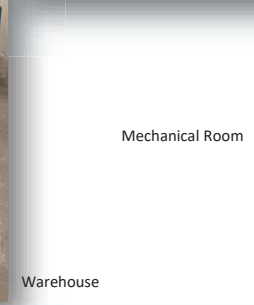
Office

Fire Prevention & Technical Support Area

## 2<sup>nd</sup> FLOOR MECHANICAL ROOMS



Server Room



Mechanical Room



Warehouse

## 3<sup>RD</sup> FLOOR PROGRESS



EMERGENCY COORDINATION CENTRE



Chief's Office



Kitchen

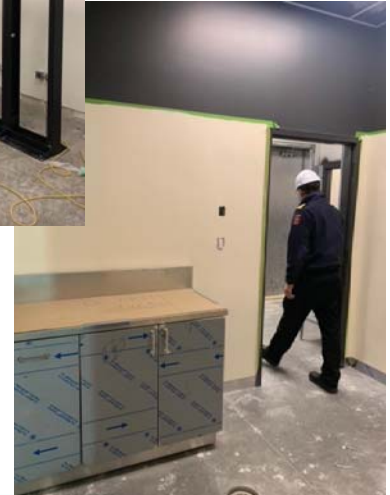


## APPARATUS BAY



Radio Room

Apparatus Bay



## TEMPORARY APPARATUS BAY

Built for business continuity until the old station is removed

Delivered within project budget

Potential future uses are permanent apparatus bay for fire department or a facility for Public Works



Temporary Apparatus Bay

# BUDGET

Station 1 is tracking on budget with approximately 10% contingency to manage risks

