

ATTACHMENT E BUILDING ELEVATIONS AND MATERIALS

MATERIAL PALETTE

- 1 STUCCO, IN POLYESTER WHITE
- 2 LUX SMOOTH 4" V-GROOVE PANELS, IN SADDLE
- 3 FIBRE CEMENT LAPPED SIDING, 7" PROFILE, WOOD TEXTURE, IN IRON GREY
- 4 FIBRE CEMENT LAPPED SIDING, 5" PROFILE, WOOD TEXTURE, IN PEARL GREY
- 5 FIBRE CEMENT PANEL SIDING, SMOOTH TEXTURE, IN PEARL GREY
- 6 THINSTONE VENEER, IN OCEAN PEARL/SAWN ASHLAR, GREY TONES
- 7 ALUMINIUM TRIM FLASHING, IN CHARCOAL GREY, WESTFORM METALS
- 8 ALUMINIUM TRIM FLASHING, IN REGENT GREY, WESTFORM METALS
- 9 COMBFACED WOOD FASCIA, PAINTED TO COLOUR MATCH SOFFIT

- 10 SOFFIT, KAYCAN, VENTED VINYL SOFFIT, IN MEDIUM GREY WITH ALUMINIUM CAP FLASHING, IN REGENT GREY, WESTFORM METALS
- 11 ALUMINIUM STORE FRONT GLAZING, IN ANODIZED SILVER
- 12 ALUMINIUM STORE FRONT DOORS, IN ANODIZED SILVER
- 13 ALUMINIUM CURTAIN WALL GLAZING, IN ANODIZED SILVER
- 14 SPANDREL PANEL
- 15 ALUMINIUM WINDOW FRAMES, IN ANODIZED SILVER
- 16 ALUMINIUM DOOR FRAMES, IN ANODIZED SILVER
- 17 SLIDING GLASS PATIO DOOR, IN ANODIZED SILVER

- 18 CLEAR GLASS RAILING AND ALUMINIUM GUARDRAILS, STOCK COLOUR IN REGENT GREY FINISH
- 19 STEEL COLUMNS & STRUCTURE, IN REGENT GREY FINISH
- 20 CANTILEVERED BALCONY
- 21 LIVING WALL SYSTEM / CASCADING PLANTERS
- 22 GREEN ROOF
- 23 LOUVERS, METAL FRAME, IN REGENT GREY FINISH
- 24 MECHANICAL SCREEN LOUVERS, METAL FRAME, IN REGENT GREY FINISH
- 25 ALUMINIUM GUARDRAILS WITH PICKETS, IN CHARCOAL
- 26 PARKADE OPENINGS WITH METAL MESH INFILL PANELS, IN GREY TONES
- 27 STEEL DOOR, PREFINISHED

REVISION	DATE	DESCRIPTION
1	25-Jan-20	DP REVISIONS -REMOVE SITE STAIR, FUTURE BOARDWALK & DOCK -SHOW GREEN WALL AT SHENTON ROAD BUILDING 2
2	26-Nov-20	DP REVISIONS -UPDATE MATERIAL PALETTE NUMBERS -ADD AND SITE CROSS SECTIONS AT BUILDINGS
3	1-Dec-21	DP REVISIONS -DP TO BE SUB TO COMPLY WITH 150' WATERCOURSE SETBACK



1 Shenton Road Streetscape Elevation
Scale: 3/32" = 1'-0"



2 Diver Lake Elevation
Scale: 3/32" = 1'-0"

RW Wall
Nanaimo, BC
1 DEC 20

Elements Mixed Use Development
REVISION TO DEVELOPMENT PERMIT

RECEIVED
DP 1165
2021-DEC-02

Site Elevations

A300

3/16" = 1'-0"



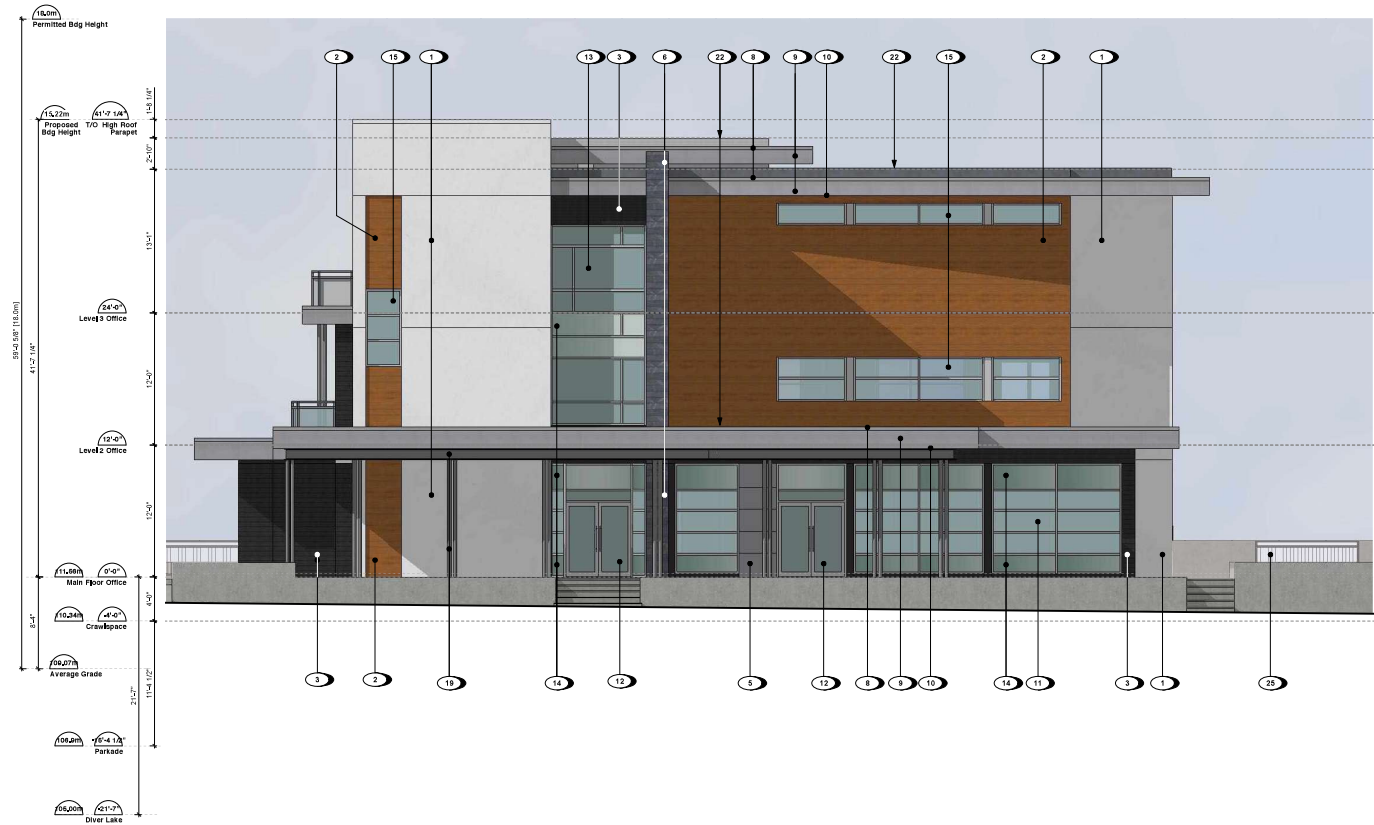
MATERIAL PALETTE

- 1 STUCCO, IN POLYESTER WHITE
- 2 LUX SMOOTH 4" V-GROOVE PANELS, IN SADDLE
- 3 FIBRE CEMENT LAPPED SIDING, 7" PROFILE, WOOD TEXTURE, IN IRON GREY
- 4 FIBRE CEMENT LAPPED SIDING, 5" PROFILE, WOOD TEXTURE, IN PEARL GREY
- 5 THINSTONE VENEER, IN OCEAN PEARL SAWSHAR, GREY TONES
- 6 ALUMINIUM TRIM FLASHING, IN CHARCOAL GREY, WESTFORM METALS
- 7 COMBACED WOOD FASCIA, PAINTED TO COLOUR MATCH SOFFIT

- 10 SOFFIT, KAYCAN, VENTED VINYL, SOFFIT, IN MEDIUM GREY WITH ALUMINIUM CAP FLASHING, IN REGENT GREY, WESTFORM METALS
- 11 ALUMINIUM STORE FRONT GLAZING, IN ANODIZED SILVER
- 12 ALUMINIUM STORE FRONT DOORS, IN ANODIZED SILVER
- 13 ALUMINIUM CURTAIN WALL GLAZING, IN ANODIZED SILVER
- 14 SPANDREL PANEL
- 15 ALUMINIUM WINDOW FRAMES, IN ANODIZED SILVER
- 16 ALUMINIUM DOOR FRAMES, IN ANODIZED SILVER
- 17 SLIDING GLASS PATIO DOOR, IN ANODIZED SILVER

- 18 CLEAR GLASS RAILING AND ALUMINIUM GUARDRAILS, STOCK COLOUR IN REGENT GREY FINISH
- 19 STEEL COLUMNS & STRUCTURE, IN REGENT GREY FINISH
- 20 CANTILEVERED BALCONY
- 21 LIVING WALL SYSTEM / CASCAING PLANTERS
- 22 GREEN ROOF
- 23 LOUVERS, METAL FRAME, IN REGENT GREY FINISH
- 24 MECHANICAL SCREEN LOUVERS, METAL FRAME, IN REGENT GREY FINISH
- 25 ALUMINIUM GUARDRAILS WITH PICKETS, IN CHARCOAL
- 26 PARKADE OPENINGS WITH METAL MESH INFILL PANELS, IN GREY TONES
- 27 STEEL DOOR, PREFINISHED

REVISION	DATE	DESCRIPTION
1	20-Jan-20	DP REVISIONS - REMOVE STE STAIR FUTURE BOARDWALK & DOCK - SHOW GREENWALL AT SHENTON ROAD BUILDING 2 - UPDATE MATERIAL PALETTE NUMBERS
2	26-Nov-20	DP REVISIONS - ADD AND SITE CROSS SECTIONS AT BUILDINGS
3	14-Dec-21	DP REVISIONS - DP DESIGN TO COMPLY WITH 150 WATERCOURSE SETBACK - COMPREHENSIVE LETTER RESPONSE



1 North Elevation - Main Entrance
A301
Scale: 3/16" = 1'-0"

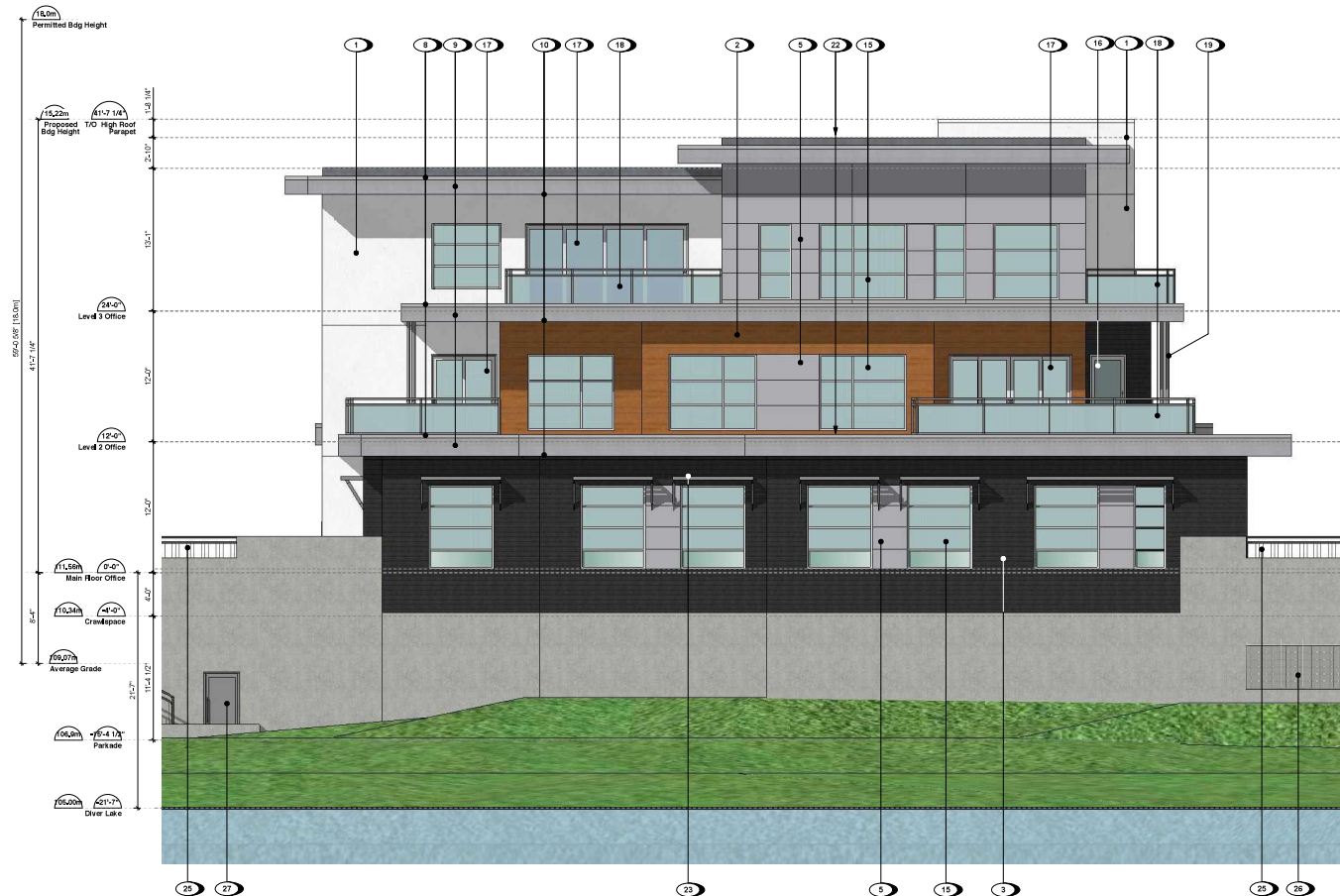
MATERIAL PALETTE

- 1 STUCCO, IN POLYESTER WHITE
- 2 LUX SMOOTH 4" V-GROOVE PANELS, IN SADDLE
- 3 FIBRE CEMENT LAPPED SIDING, 5" PROFILE, WOOD TEXTURE, IN IRON GREY
- 4 FIBRE CEMENT PANEL SIDING, SMOOTH TEXTURE, IN PEARL GREY
- 5 THINSTONE VENEER, IN OCEAN PEARL/SAWN ASHLAR, GREY TONES
- 6 ALUMINIUM TRIM FLASHING, IN CHARCOAL GREY, WESTFORM METALS
- 7 ALUMINIUM TRIM FLASHING, IN REGENT GREY, WESTFORM METALS
- 8 COMB FACED WOOD FASCIA, PAINTED TO COLOUR MATCH SOFFIT

- 10 SOFFIT, KAYCAN, VENTED VINYL SOFFIT, IN MEDIUM GREY WITH ALUMINIUM CAP FLASHING, IN REGENT GREY, WESTFORM METALS
- 11 ALUMINIUM STORE FRONT GLAZING, IN ANODIZED SILVER
- 12 ALUMINIUM STORE FRONT DOORS, IN ANODIZED SILVER
- 13 ALUMINIUM CURTAIN WALL GLAZING, IN ANODIZED SILVER
- 14 SPANDREL PANEL
- 15 ALUMINIUM WINDOW FRAMES, IN ANODIZED SILVER
- 16 ALUMINIUM DOOR FRAMES, IN ANODIZED SILVER
- 17 SLIDING GLASS PATIO DOOR, IN ANODIZED SILVER

- 18 CLEAR GLASS RAILING AND ALUMINIUM GUARDRAILS, STUCCO COLOUR IN REGENT GREY FINISH
- 19 STEEL COLUMNS & STRUCTURE, IN REGENT GREY FINISH
- 20 CANTILEVERED BALCONY
- 21 LIVING WALL SYSTEM / CASCADING PLANTERS
- 22 GREEN ROOF
- 23 LOUVERS, METAL FRAME, IN REGENT GREY FINISH
- 24 MECHANICAL SCREEN LOUVERS, METAL FRAME, IN REGENT GREY FINISH
- 25 ALUMINIUM GUARDRAILS WITH PICKETS, IN CHARCOAL
- 26 PARKADE OPENINGS WITH METAL MESH INFILL PANELS, IN GREY TONES
- 27 STEEL DOOR, PREFINISHED

REVISION	DATE	DESCRIPTION
1	25-Jan-20	DP REVISIONS - REMOVE SITE STAIR, FUTURE BOARDWALK & DOCK - SHOW GREEN WALL AT SHENTON ROAD BUILDING 2 - UPDATE MATERIAL PALETTE NUMBERS - ADD AND SITE CROSS SECTIONS AT BUILDINGS
2	26-Nov-20	DP REVISIONS - DP TO BE BORN TO COMPLY WITH 150' WATERCOURSE SETBACK
3	1-Dec-21	DP REVISIONS - COMPREHENSIVE LETTER RESPONSE



1 South Elevation
A302 Scale: 3/16" = 1'-0"



MATERIAL PALETTE

- 1 STUCCO, IN POLYESTER WHITE
- 2 LUX SMOOTH 4" V-GROOVE PANELS, IN SADDLE
- 3 FIBRE CEMENT LAPPED SIDING, 7" PROFILE, WOOD TEXTURE, IN IRON GREY
- 4 FIBRE CEMENT PANEL SIDING, 5" PROFILE, WOOD TEXTURE, IN PEARL GREY
- 5 THINSTONE VENEER, IN OCEAN PEARL/SAWN ASHLAR, GREY TONES
- 6 ALUMINIUM TRIM FLASHING, IN CHARCOAL GREY, WESTFORM METALS
- 7 ALUMINIUM TRIM FLASHING, IN REGENT GREY, WESTFORM METALS
- 8 COMBACED WOOD FASCIA, PAINTED TO COLOUR MATCH SOFFIT

- 10 SOFFIT, KAYCAN, VENTED VINYL SOFFIT, IN MEDIUM GREY WITH ALUMINIUM CAP FLASHING, IN REGENT GREY, WESTFORM METALS
- 11 ALUMINIUM STORE FRONT GLAZING, IN ANODIZED SILVER
- 12 ALUMINIUM CURTAIN WALL GLAZING, IN ANODIZED SILVER
- 13 SPANDREL PANEL
- 14 ALUMINIUM WINDOW FRAMES, IN ANODIZED SILVER
- 15 ALUMINIUM DOOR FRAMES, IN ANODIZED SILVER
- 16 SLIDING GLASS PATIO DOOR, IN ANODIZED SILVER

- 18 CLEAR GLASS RAILING AND ALUMINIUM GUARDRAILS, STOCK COLOUR IN REGENT GREY FINISH
- 19 STEEL COLUMNS & STRUCTURE, IN REGENT GREY FINISH
- 20 CANTILEVERED BALCONY
- 21 LIVING WALL SYSTEM / CASCADING PLANTERS
- 22 GREEN ROOF
- 23 LOUVERS, METAL FRAME, IN REGENT GREY FINISH
- 24 MECHANICAL SCREEN LOUVERS, METAL FRAME, IN REGENT GREY FINISH
- 25 ALUMINIUM GUARDRAILS WITH PICKETS, IN CHARCOAL
- 26 PARKADE OPENINGS WITH METAL MESH INFILL PANELS, IN GREY TONES
- 27 STEEL DOOR, PREFINISHED

REVISION	DATE	DESCRIPTION
1	25-Jan-20	DP REVISIONS - REMOVE SITE STAIR, FUTURE BOARDWALK & DOCK - SHOW GREEN WALL AT SHENTON ROAD BUILDING 2 - UPDATE MATERIAL PALETTE NUMBERS
2	26-Nov-20	DP REVISIONS - DP TO BE BORN TO COMPLY WITH 150' WATERCOURSE SETBACK
3	1-Dec-21	DP REVISIONS - COMPREHENSIVE LETTER RESPONSE



RECEIVED
DP 1165
2021-DEC-02

2 Dec 2021

dhKarchitects dhKa

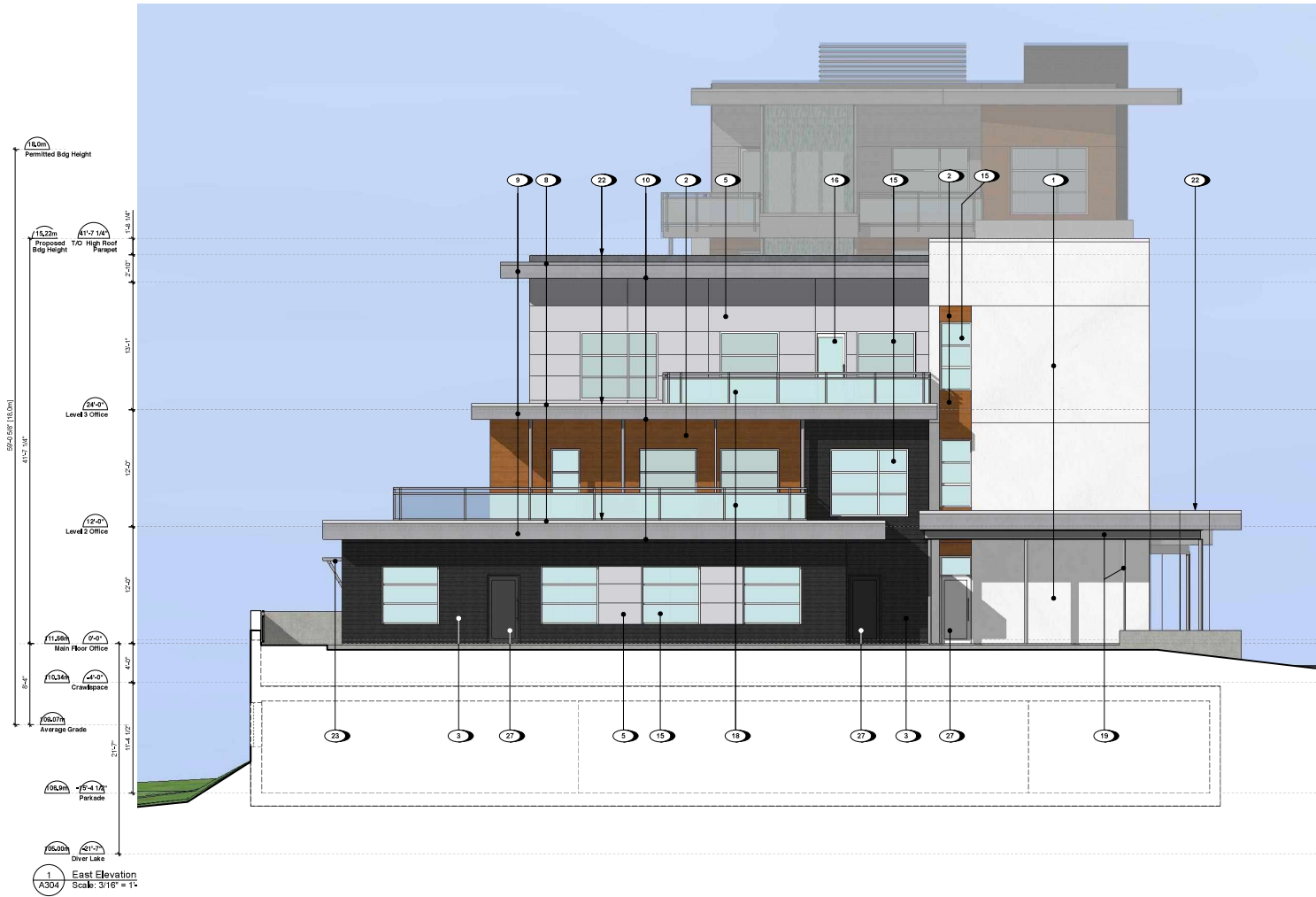
MATERIAL PALETTE

- 1 STUCCO, IN POLYESTER WHITE
- 2 LUX SMOOTH 4" V-GROOVE PANELS, IN SADDLE
- 3 FIBRE CEMENT LAPPED SIDING, 5" PROFILE, WOOD TEXTURE, IN IRON GREY
- 4 FIBRE CEMENT LAPPED SIDING, 5" PROFILE, WOOD TEXTURE, IN PEARL GREY
- 5 FIBRE CEMENT PANEL SIDING, SMOOTH TEXTURE, IN PEARL GREY
- 6 THINSTONE VENEER, IN OCEAN PEARL/SAWN ASHLAR, GREY TONES
- 7 ALUMINIUM TRIM FLASHING, IN CHARCOAL GREY, WESTFORM METALS
- 8 ALUMINIUM TRIM FLASHING, IN REGENT GREY, WESTFORM METALS
- 9 COMBFAÇED WOOD FASCIA, PAINTED TO COLOUR MATCH SOFFIT

- 10 SOFFIT, KAYCAN, VENTED VINYL, SOFFIT, IN MEDIUM GREY WITH ALUMINIUM CAP FLASHING, IN REGENT GREY, WESTFORM METALS
- 11 ALUMINIUM STORE FRONT GLAZING, IN ANODIZED SILVER
- 12 ALUMINIUM STORE FRONT DOORS, IN ANODIZED SILVER
- 13 ALUMINIUM CURTAIN WALL GLAZING, IN ANODIZED SILVER
- 14 SPANDREL PANEL
- 15 ALUMINIUM WINDOW FRAMES, IN ANODIZED SILVER
- 16 ALUMINIUM DOOR FRAMES, IN ANODIZED SILVER
- 17 SLIDING GLASS PATIO DOOR, IN ANODIZED SILVER

- 18 CLEAR GLASS RAILING AND ALUMINIUM GUARDRAILS, STOCK COLOUR IN REGENT GREY FINISH
- 19 STEEL COLUMNS & STRUCTURE, IN REGENT GREY FINISH
- 20 CANTILEVERED BALCONY
- 21 LIVING WALL SYSTEM / CASCAADING PLANTERS
- 22 GREEN ROOF
- 23 LOUVERS, METAL FRAME, IN REGENT GREY FINISH
- 24 MECHANICAL SCREEN LOUVERS, METAL FRAME, IN REGENT GREY FINISH
- 25 ALUMINIUM GUARDRAILS WITH PICKETS, IN CHARCOAL
- 26 PARKADE OPENINGS WITH METAL MESH INFILL PANELS, IN GREY TONES
- 27 STEEL DOOR, PREFINISHED

REVISION	DATE	DESCRIPTION
1	25-Jan-20	DP REVISIONS - REMOVE SITE STAIR, FUTURE BOARDWALK & DOCK - SHOW GREEN WALL AT SHENTON ROAD BUILDING 2 - UPDATE MATERIAL PALETTE NUMBERS
2	26-Nov-20	DP REVISIONS - DP TO BE BORN TO COMPLY WITH 150' WATERCOURSE SETBACK
3	1-Dec-21	DP REVISIONS - COMPREHENSIVE LETTER RESPONSE



2 East Elevation at Parkade Entry Scale: 1/16" = 1'-0"

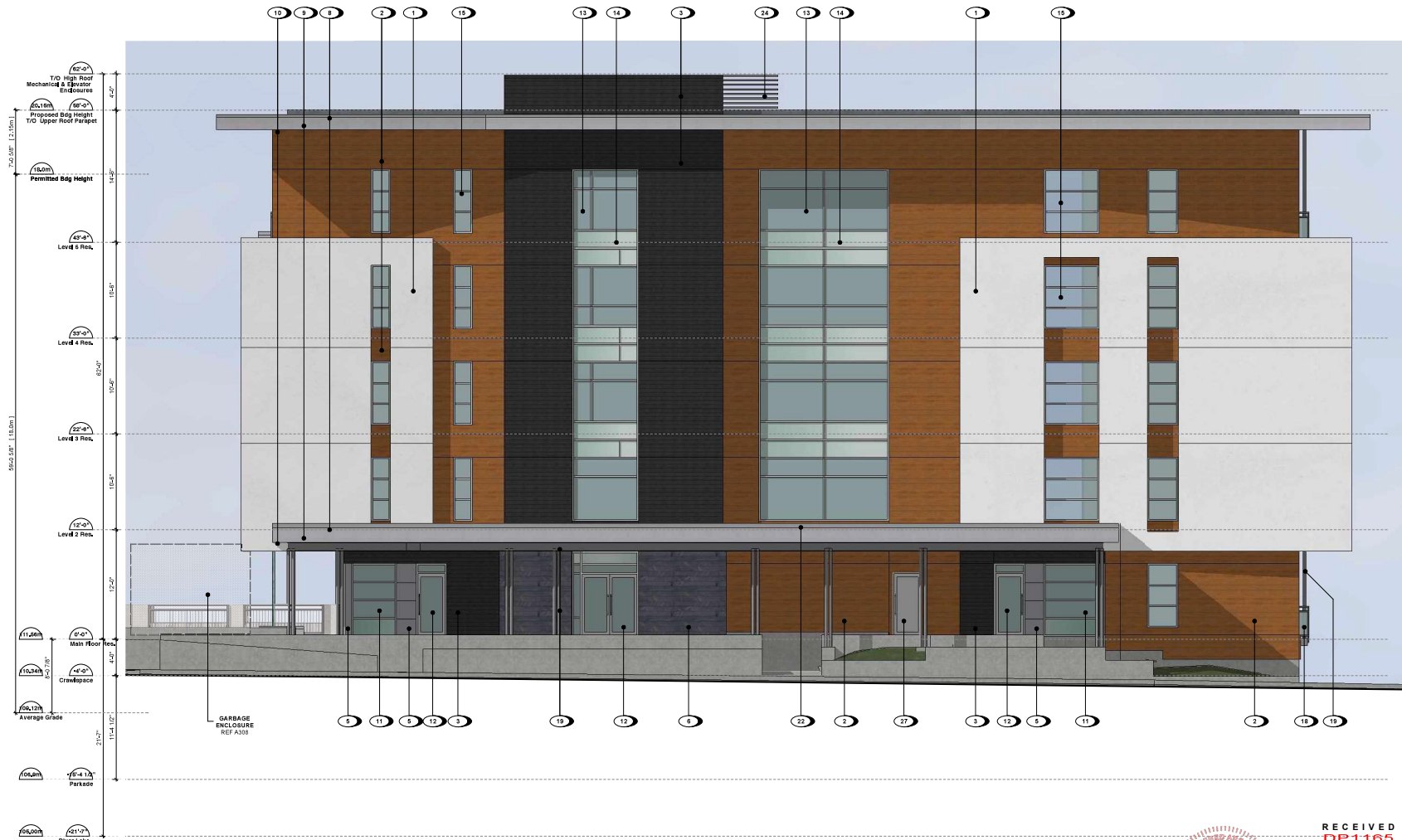
MATERIAL PALETTE

- 1 STUCCO, IN POLYESTER WHITE
- 2 LUX SMOOTH 4" V-GROOVE PANELS, IN SADDLE
- 3 FIBRE CEMENT LAPPED SIDING, 7" PROFILE, WOOD TEXTURE, IN IRON GREY
- 4 FIBRE CEMENT LAPPED SIDING, 5" PROFILE, WOOD TEXTURE, IN PEARL GREY
- 5 FIBRE CEMENT PANEL SIDING, SMOOTH TEXTURE, IN PEARL GREY
- 6 THINSTONE VENEER, IN OCEAN PEARL SAWSHAR, GREY TONES
- 7 ALUMINIUM TRIM FLASHING, IN CHARCOAL GREY, WESTFORM METALS
- 8 ALUMINIUM TRIM FLASHING, IN REGENT GREY, WESTFORM METALS
- 9 COMBAGED WOOD FASCIA, PAINTED TO COLOUR MATCH SOFFIT

- 10 SOFFIT, KAYCAN, VENTED VINYL, SOFFIT, IN MEDIUM GREY WITH ALUMINIUM CAP FLASHING, IN REGENT GREY, WESTFORM METALS
- 11 ALUMINIUM STORE FRONT GLAZING, IN ANODIZED SILVER
- 12 ALUMINIUM STORE FRONT DOORS, IN ANODIZED SILVER
- 13 ALUMINIUM CURTAIN WALL GLAZING, IN ANODIZED SILVER
- 14 SPANDREL PANEL
- 15 ALUMINIUM WINDOW FRAMES, IN ANODIZED SILVER
- 16 ALUMINIUM DOOR FRAMES, IN ANODIZED SILVER
- 17 SLIDING GLASS PATIO DOOR, IN ANODIZED SILVER

- 18 CLEAR GLASS RAILING AND ALUMINIUM GUARDRAILS, STOCK COLOUR IN REGENT GREY FINISH
- 19 STEEL COLUMNS & STRUCTURE, IN REGENT GREY FINISH
- 20 CANTILEVERED BALCONY
- 21 LIVING WALL SYSTEM / CASCAING PLANTERS
- 22 GREEN ROOF
- 23 LOUVERS, METAL FRAME, IN REGENT GREY FINISH
- 24 MECHANICAL SCREEN LOUVERS, METAL FRAME, IN REGENT GREY FINISH
- 25 ALUMINIUM GUARDRAILS WITH PICKETS, IN CHARCOAL
- 26 PARKADE OPENINGS WITH METAL MESH INFILL PANELS, IN GREY TONES
- 27 STEEL DOOR, PREFINISHED

REVISION	DATE	DESCRIPTION
1	20-Jan-20	DP REVISIONS - REMOVE SHE STAIR FUTURE BOARDWALK & DECK - SHOW GREEN WALL AT SHENTON ROAD BUILDING 2 - UPDATE MATERIAL PALETTE NUMBERS - ADD AND SITE CROSS SECTIONS AT BUILDINGS
2	26-Nov-20	DP REVISIONS - DP DESIGN TO COMPLY WITH 150 WATERCOURSE SETBACK
3	1-Dec-21	DP REVISIONS - COMPREHENSIVE LETTER RESPONSE



1 North Elevation - Main Entrance
Scale: 3/16" = 1'-0"

RECEIVED
2021-DEC-02

2 Dec 2021

SHK Architects dKa

MATERIAL PALETTE

- 1 STUCCO, IN POLYESTER WHITE
- 2 LUX SMOOTH 4" V-GROOVE PANELS, IN SADDLE
- 3 FIBRE CEMENT LAPPED SIDING, 7" PROFILE, WOOD TEXTURE, IN IRON GREY
- 4 FIBRE CEMENT LAPPED SIDING, 5" PROFILE, WOOD TEXTURE, IN PEARL GREY
- 5 FIBRE CEMENT PANEL SIDING, SMOOTH TEXTURE, IN PEARL GREY
- 6 THINSTONE VENEER, IN OCEAN PEARL/SAWN ASHLAR, GREY TONES
- 7 ALUMINIUM TRIM FLASHING, IN CHARCOAL GREY, WESTFORM METALS
- 8 ALUMINIUM TRIM FLASHING, IN REGENT GREY, WESTFORM METALS
- 9 COMBAGED WOOD FASCIA, PAINTED TO COLOUR MATCH SOFFIT

- 10 SOFFIT, KAYCAN, VENTED VINYL SOFFIT, IN MEDIUM GREY WITH ALUMINIUM CAP FLASHING, IN REGENT GREY, WESTFORM METALS
- 11 ALUMINIUM STORE FRONT GLAZING, IN ANODIZED SILVER
- 12 ALUMINIUM STORE FRONT DOORS, IN ANODIZED SILVER
- 13 ALUMINIUM CURTAIN WALL GLAZING, IN ANODIZED SILVER
- 14 SPANDREL PANEL
- 15 ALUMINIUM WINDOW FRAMES, IN ANODIZED SILVER
- 16 ALUMINIUM DOOR FRAMES, IN ANODIZED SILVER
- 17 SLIDING GLASS PATIO DOOR, IN ANODIZED SILVER

- 18 CLEAR GLASS RAILING AND ALUMINIUM GUARDRAILS, STOCK COLOUR IN REGENT GREY FINISH
- 19 STEEL COLUMNS & STRUCTURE, IN REGENT GREY FINISH
- 20 CANTILEVERED BALCONY
- 21 LIVING WALL SYSTEM / CASCADING PLANTERS
- 22 GREEN ROOF
- 23 LOUVERS, METAL FRAME, IN REGENT GREY FINISH
- 24 MECHANICAL SCREEN LOUVERS, METAL FRAME, IN REGENT GREY FINISH
- 25 ALUMINIUM GUARDRAILS WITH PICKETS, IN CHARCOAL
- 26 PARKADE OPENINGS WITH METAL MESH INFILL PANELS, IN GREY TONES
- 27 STEEL DOOR, PREFINISHED

REVISION	DATE	DESCRIPTION
1	25-Jan-20	DP REVISIONS - REMOVE SITE STAIR, FUTURE BOARDWALK & DOCK - SHOW GREEN WALL AT SHENTON ROAD BUILDING 2 - UPDATE MATERIAL PALETTE NUMBERS
2	26-Nov-20	DP REVISIONS - DP TO BE SHOWN TO COMPLY WITH 150' WATERCOURSE SETBACK
3	1-Dec-21	DP REVISIONS - COMPREHENSIVE LETTER RESPONSE



1 West Elevation
Scale: 3/16" = 1'-0"



2 East Elevation
Scale: 3/16" = 1'-0"

MATERIAL PALETTE

- 1 STUCCO, IN POLYESTER WHITE
- 2 LUX SMOOTH 4" V-GROOVE PANELS, IN SADDLE
- 3 FIBRE CEMENT LAPPED SIDING, 7" PROFILE, WOOD TEXTURE, IN IRON GREY
- 4 FIBRE CEMENT LAPPED SIDING, 5" PROFILE, WOOD TEXTURE, IN PEARL GREY
- 5 FIBRE CEMENT PANEL SIDING, SMOOTH TEXTURE, IN PEARL GREY
- 6 THINSTONE VENEER, IN OCEAN PEARL SAWSHILLAR, GREY TONES
- 7 ALUMINIUM TRIM FLASHING, IN CHARCOAL GREY, WESTFORM METALS
- 8 ALUMINIUM TRIM FLASHING, IN REGENT GREY, WESTFORM METALS
- 9 COMBAGED WOOD FASCIA, PAINTED TO COLOUR MATCH SOFFIT

- 10 SOFFIT, KAYCAN, VENTED VINYL SOFFIT, IN MEDIUM GREY WITH ALUMINIUM CAP FLASHING, IN REGENT GREY, WESTFORM METALS
- 11 ALUMINIUM STORE FRONT GLAZING, IN ANODIZED SILVER
- 12 ALUMINIUM STORE FRONT DOORS, IN ANODIZED SILVER
- 13 ALUMINIUM CURTAIN WALL GLAZING, IN ANODIZED SILVER
- 14 SPANDREL PANEL
- 15 ALUMINIUM WINDOW FRAMES, IN ANODIZED SILVER
- 16 ALUMINIUM DOOR FRAMES, IN ANODIZED SILVER
- 17 SLIDING GLASS PATIO DOOR, IN ANODIZED SILVER

- 18 CLEAR GLASS RAILING AND ALUMINIUM GUARDRAILS, STOCK COLOUR IN REGENT GREY FINISH
- 19 STEEL COLUMNS & STRUCTURE, IN REGENT GREY FINISH
- 20 CANTILEVERED BALCONY
- 21 LIVING WALL SYSTEM / CASCADING PLANTERS
- 22 GREEN ROOF
- 23 LOUVERS, METAL FRAME, IN REGENT GREY FINISH
- 24 MECHANICAL SCREEN LOUVERS, METAL FRAME, IN REGENT GREY FINISH
- 25 ALUMINIUM GUARDRAILS WITH PICKETS, IN CHARCOAL
- 26 PARKADE OPENINGS WITH METAL MESH INFILL PANELS, IN GREY TONES
- 27 STEEL DOOR, PREFINISHED

REVISION	DATE	DESCRIPTION
1	25-Jan-20	DP REVISIONS - REMOVE SITE STAIR, FUTURE BOARDWALK & DOCK - SHOW GREEN WALL AT SHENTON ROAD BUILDING 2 - UPDATE MATERIAL PALETTE NUMBERS
2	28-Nov-20	DP REVISIONS - ADD AND SITE CROSS SECTIONS AT BUILDINGS
3	1-Dec-21	DP REVISIONS - ADD PER SIGN TO COMPLY WITH 150' WATERCOURSE SETBACK
		COMPREHENSIVE LETTER RESPONSE



1 South Elevation
Scale: 3/16" = 1'-0"

RECEIVED
DP1165
2021-DEC-02

RECEIVED
CITY OF NANAIMO
2 DEC 2021
A307
3/16" = 1'-0"
dHK Architects dK+a
GARBAGE ENCLOSURE REF A308

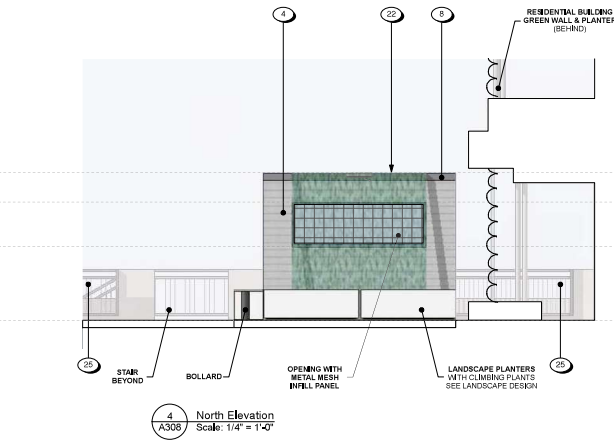
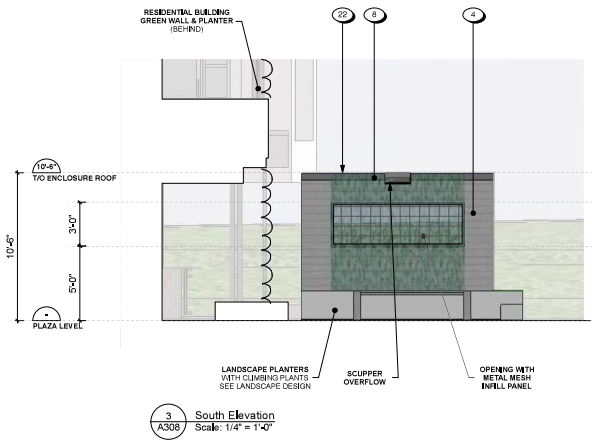
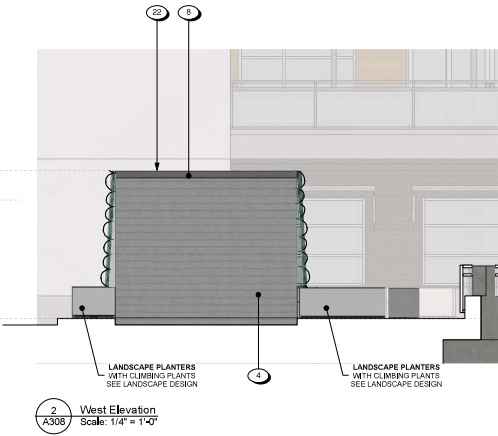
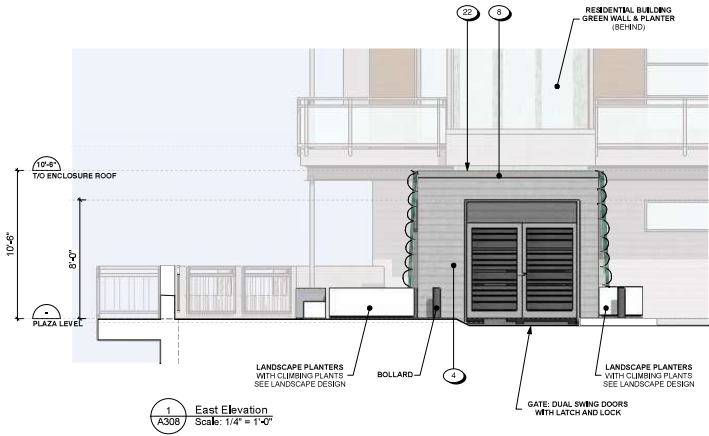
MATERIAL PALETTE

- 1 STUCCO, IN POLYESTER WHITE
- 2 LUX SMOOTH 4" V-GROOVE PANELS, IN SADDLE
- 3 FIBRE CEMENT LAPPED SIDING, 7" PROFILE, WOOD TEXTURE, IN IRON GREY
- 4 FIBRE CEMENT LAPPED SIDING, 5" PROFILE, WOOD TEXTURE, IN PEARL GREY
- 5 FIBRE CEMENT PANEL SIDING, SMOOTH TEXTURE, IN PEARL GREY
- 6 THIN STONE VENEER, IN OCEAN PEARL SAUNASHLAR, GREY TONES
- 7 ALUMINIUM TRIM FLASHING, IN CHARCOAL GREY, WESTFORM METALS
- 8 ALUMINIUM TRIM FLASHING, IN REGENT GREY, WESTFORM METALS
- 9 COMBACED WOOD FASCIA, PAINTED TO COLOUR MATCH SOFFIT

- 10 SOFFIT, KAYCAN, VENTED VINYL SOFFIT, IN MEDIUM GREY WITH ALUMINIUM CAP FLASHING, IN REGENT GREY, WESTFORM METALS
- 11 ALUMINIUM STORE FRONT GLAZING, IN ANODIZED SILVER
- 12 ALUMINIUM STORE FRONT DOORS, IN ANODIZED SILVER
- 13 ALUMINIUM CURTAIN WALL GLAZING, IN ANODIZED SILVER
- 14 SPANDREL PANEL
- 15 ALUMINIUM WINDOW FRAMES, IN ANODIZED SILVER
- 16 ALUMINIUM DOOR FRAMES, IN ANODIZED SILVER
- 17 SLIDING GLASS PATIO DOOR, IN ANODIZED SILVER

- 18 CLEAR GLASS RAILING AND ALUMINIUM GUARDRAILS, STOCK COLOUR IN REGENT GREY FINISH
- 19 STEEL COLUMNS & STRUCTURE, IN REGENT GREY FINISH
- 20 CANTILEVERED BALCONY
- 21 LIVING WALL SYSTEM / CASCADING PLANTERS
- 22 GREEN ROOF
- 23 LOUVERS, METAL FRAME, IN REGENT GREY FINISH
- 24 MECHANICAL SCREEN LOUVERS, METAL FRAME, IN REGENT GREY FINISH
- 25 ALUMINIUM GUARDRAILS WITH PICKETS, IN CHARCOAL
- 26 PARKADE OPENINGS WITH METAL MESH INFILL PANELS, IN GREY TONES
- 27 STEEL DOOR, PREFINISHED

REVISION	DATE	DESCRIPTION
1	23-Nov-20	DP REVISIONS - REMOVE SITE STAIR, FUTURE BOARDWALK & DOCK - SHOW GREEN WALL AT SHERTON ROAD BUILDING 2 - UPDATE MATERIAL PALETTE NUMBERS - ADD ADD SITE CROSS SECTIONS AT BUILDINGS
2	26-Nov-20	DP REVISIONS - DP DESIGN TO COMPLY WITH 15m WATERCOURSE SETBACK
3	1-Dec-21	DP REVISIONS - COMPREHENSIVE LETTER RESPONSE



RECEIVED
DP1165
2021-DEC-02

SHKarchitects dkKa



1 West Elevation
Scale: 1/8" = 1'-0"

2 North Elevation - Shenton Road
Scale: 1/8" = 1'-0"



3 East Elevation
Scale: 1/8" = 1'-0"

4 South Elevation
Scale: 1/8" = 1'-0"

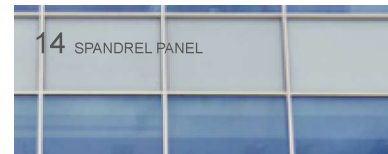
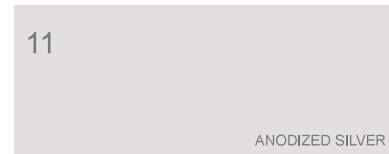
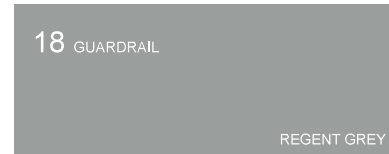
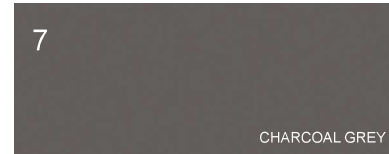
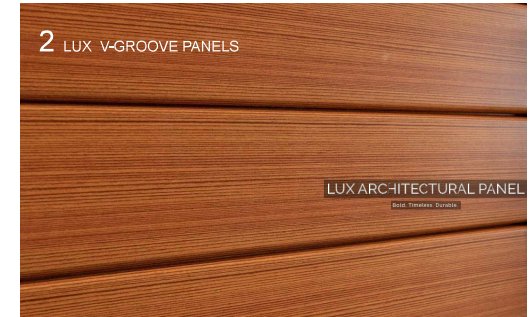
REVISION	DATE	DESCRIPTION
1	24-Nov-20	TOP REVISIONS - REMOVE SITE STAIR, FUTURE BOARDWALK & DOCK - REMOVE GREEN WALL AT SHENTON ROAD BUILDING 2 - FRONT MATERIAL PALETTE NUMBERS - ADD AND SITE CROSS SECTIONS AT BUILDINGS
2	26-Nov-20	TOP REVISIONS - TO DESIGN TO COMPLY WITH 15m WATERCOURSE SETBACK
3	29-Nov-20	TOP REVISIONS - COMPREHENSIVE LETTER RESPONSE

RECEIVED
DP1165
2021-DEC-02
Current Planning

MATERIAL PALETTE

- 1 STUCCO, IN POLYESTER WHITE
- 2 LUX SMOOTH 4" V-GROOVE PANELS, IN SADDLE
- 3 FIBRE CEMENT LAPPED SIDING, 7" PROFILE, WOOD TEXTURE, IN IRON GREY
- 4 FIBRE CEMENT LAPPED SIDING, 5" PROFILE, WOOD TEXTURE, IN PEARL GREY
- 5 FIBRE CEMENT PANEL SIDING, SMOOTH TEXTURE, IN PEARL GREY
- 6 THINSTONE VENEER, IN OCEAN PEARL SAWN ASHLAR, GREY TONES
- 7 ALUMINIUM TRIM FLASHING, IN CHARCOAL GREY, WESTFORM METALS
- 8 ALUMINIUM TRIM FLASHING, IN REGENT GREY, WESTFORM METALS
- 9 COMBFACED WOOD FASCIA, PAINTED TO COLOUR MATCH SOFFIT
- 10 SOFFIT: KAYCAN, VENTED VINYL SOFFIT, IN MEDIUM GREY WITH ALUMINIUM CAP FLASHING, IN REGENT GREY, WESTFORM METALS
- 11 ALUMINIUM STORE FRONT GLAZING, IN ANODIZED SILVER
- 12 ALUMINIUM STORE FRONT DOORS, IN ANODIZED SILVER
- 13 ALUMINIUM CURTAIN WALL GLAZING, IN ANODIZED SILVER
- 14 SPANDREL PANEL
- 15 ALUMINIUM WINDOW FRAMES, IN ANODIZED SILVER
- 16 ALUMINIUM DOOR FRAMES, IN ANODIZED SILVER
- 17 SLIDING GLASS PATIO DOOR, IN ANODIZED SILVER
- 18 CLEAR GLASS RAILING AND ALUMINIUM GUARDRAILS, STOCK COLOUR IN REGENT GREY FINISH
- 19 STEEL COLUMNS & STRUCTURE, IN REGENT GREY FINISH
- 20 CANTILEVERED BALCONY
- 21 LIVING WALL SYSTEM / CASCADING PLANTERS
- 22 GREEN ROOF
- 23 LOUVERS, METAL FRAME, IN REGENT GREY FINISH
- 24 MECHANICAL SCREEN LOUVERS, METAL FRAME, IN REGENT GREY FINISH
- 25 ALUMINIUM GUARDRAILS WITH PICKETS, IN CHARCOAL
- 26 PARKADE OPENINGS WITH METAL MESH INFILL PANELS, IN GREY TONES
- 27 STEEL DOOR, PREFINISHED

REVISION	DATE	DESCRIPTION
1	23-Nov-20	DP REVISIONS - REMOVE SITE STAIR, FUTURE BOARDWALK & DOCK - SHOW GREEN WALL AT SHEKTON ROAD BUILDING 2 - UPDATE MATERIAL PALETTE NUMBERS - ADD AND SITE CROSS SECTIONS AT BUILDINGS
2	26-Nov-20	DP REVISIONS - DP DESIGN TO COMPLY WITH 15m WATERCOURSE SETBACK
3	1-Dec-21	DP REVISIONS - COMPREHENSIVE LETTER RESPONSE



RW Wall
Nanaimo, BC
1 DEC 20

Elements Mixed Use Development

REVISION TO DEVELOPMENT PERMIT

RECEIVED
DP 1165
2021-DEC-02

Material Palette

A800



dhKarchitects dhKa