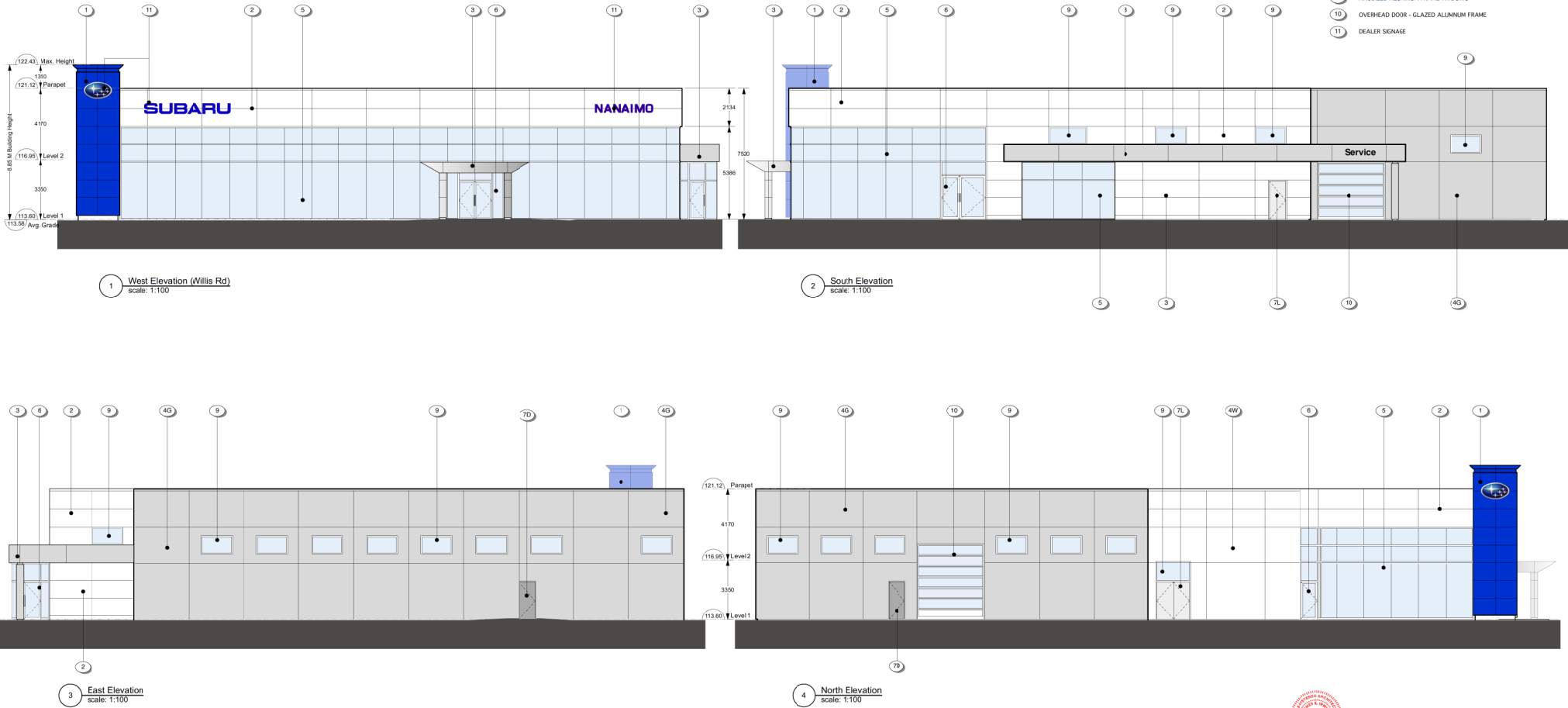


# ATTACHMENT E

## BUILDING ELEVATIONS AND MATERIALS

### MATERIALS SCHEDULE

- 1 ALUMINUM COMPOSITE MATERIAL (ACM-1)- Deep Blue C3002
- 2 ALUMINUM COMPOSITE MATERIAL (ACM-2)- Alabaster A2001-D
- 3 ALUMINUM COMPOSITE MATERIAL (ACM-3)- Silver Metallic A3001-DXLE
- 4W PAINTED PRECAST CONCRETE PANELS- White (Alabaster 2001-D)
- 4G PAINTED PRECAST CONCRETE PANELS- Grey (CLR2)
- 5 CURTAIN WALL- Silicone vertical joint, Anodized Aluminum horizontal cap
- 6 GLAZED ANODIZED ALUMINUM FRAME DOOR
- 7L DOOR - INSULATED METAL- PTD. GREY (CLR2)
- 7D DOOR - INSULATED METAL- PTD. DARK GREY (CLR3)
- 8 OVERHEAD DOOR - INSULATED METAL- PTD. DARK GREY (CLR3)
- 9 ANODIZED ALUMINUM FRAME WINDOWS
- 10 OVERHEAD DOOR - GLAZED ALUMINUM FRAME
- 11 DEALER SIGNAGE



4900 Island Highway

Elevations- Subaru A5

RECEIVED  
DP1178  
2021-DEC-21  
Current Planning

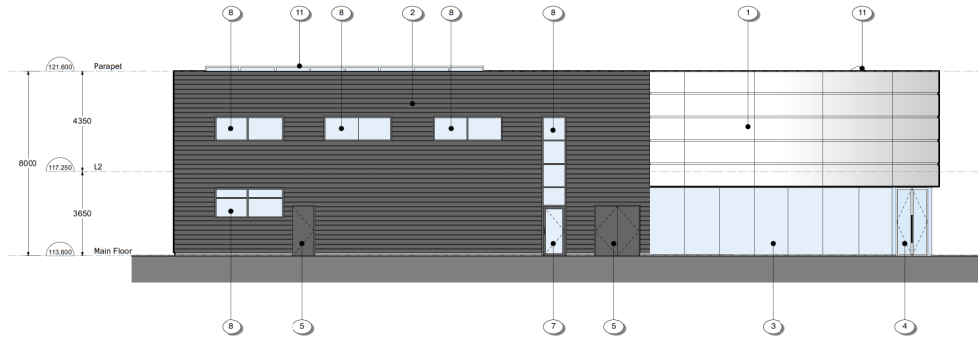


This document has been digitally certified with digital certificate and emergency recovery authorized by the Architectural Institute of BC and the Association of Professional Engineers of BC. The authoritative original has been transmitted to you in digital form. Any printed version can be relied upon as a true copy of the original when supplied by the architect, bearing the signature of the professional seal and digital certificate, or when printed from the digitally-certified electronic file provided by the architect.

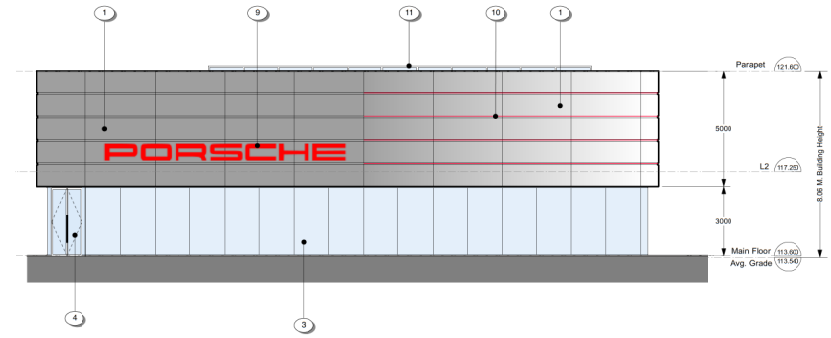
Project No. 1903  
22 November 2021 Rev. R3  
James E. Irwin ARCHITECT INC.  
Vancouver B.C. Tel. (604) 272-5595

**MATERIALS SCHEDULE**

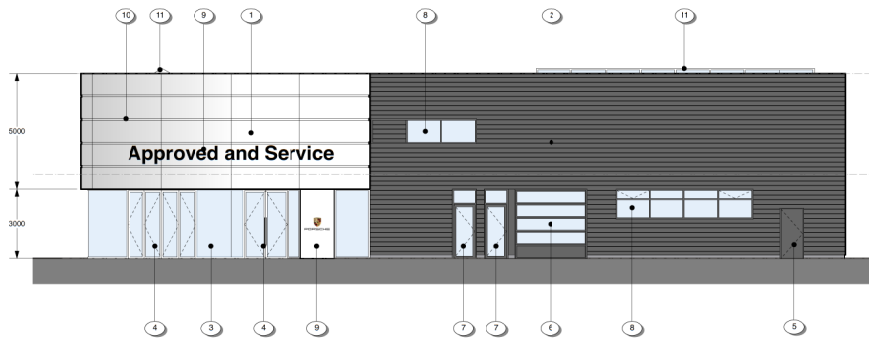
- ① ALUMINUM COMPOSITE MATERIAL- Silver Metallic A3001-OWE with feature horizontal reveal bands
- ② PIERFINISHED METAL SIDING, HORIZONTAL FLUTE- RAL7021 BLACK/GREY
- ③ CLUSTAIN WALL- Silicone vertical joint, anodized Aluminum horizontal cap
- ④ GLAZED ANNOXIDIZED ALUMINUM FRAMED DOOR
- ⑤ DOOR- INSULATED METAL- PTD. DARK GREY
- ⑥ OVERHEAD DOOR- GLAZED ALUMINUM FRAME- RAL7021 BLACK/GREY
- ⑦ GLAZED ALUMINUM FRAME DOOR- RAL7021 BLACK/GREY
- ⑧ ALUMINUM FRAME WINDOWS- RAL7021 BLACK/GREY
- ⑨ DEALER SIGNAGE
- ⑩ FEATURE RED LED STRIP LIGHTING
- ⑪ SKYLIGHT



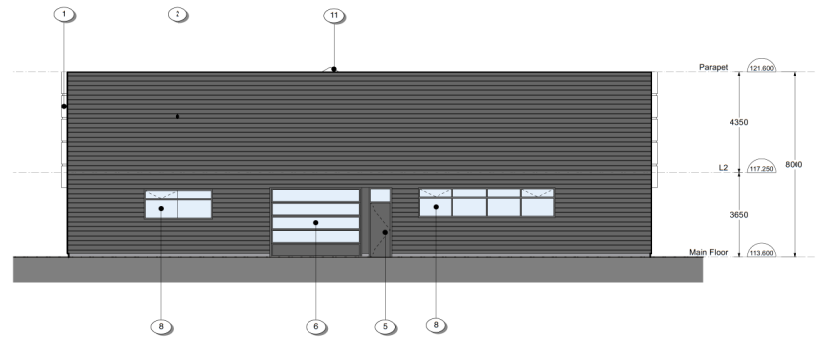
1 North Elevation  
scale: 1:100



2 West Elevation (Willis Rd)  
scale: 1:100



3 South Elevation  
scale: 1:100



4 East Elevation  
scale: 1:100



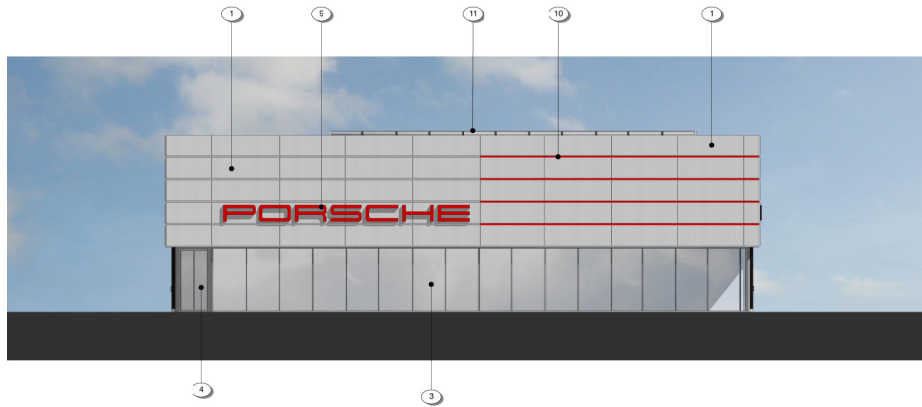
4900 Island Highway

Building B Elevations A7

RECEIVED  
DP1178  
2022-JAN-22  
CITY OF VANCOUVER

This document has been digitally certified with digital certificate and emergency destruction authorized by the Architectural Institute of BC and the Association of Professional Engineers of BC. The authoritative original has been transmitted to you in digital form. Any printed version can be relied upon as a true copy of the original when supplied by the architect, bearing the signature of the professional seal and digital certificate, or when printed from the digitally-certified electronic file provided by the architect.

Project No. 1903  
21 January 2022 Rev. R3  
James E. Irwin ARCHITECT INC.  
Vancouver, B.C. Tel: (604) 273-1886



1 West Elevation (Willis Rd)  
scale: n.t.s.



2 North Elevation  
scale: n.t.s.



3 South Elevation  
scale: n.t.s.

#### MATERIALS SCHEDULE

- |    |  |   |
|----|--|---|
| 1  |  | ALUMINUM COMPOSITE MATERIAL- Silver Metallic A3001-CXLE<br>with feature horizontal reveal bands |
| 2  |  | PREFINISHED METAL SIDING, HORIZONTAL FLUTE- RAL7021 BLACK/GREY                                  |
| 3  |  | CURTAIN WALL- Silicone vertical joint,<br>Anodized Aluminum horizontal cap                      |
| 4  |  | GLAZED ANNOIDIZED ALUMINUM FRAME DOOR   |
| 5  |  | DOOR - INSULATED METAL- Ptd. RAL7021 BLACK/GREY   |
| 6  |  | OVERHEAD DOOR - GLAZED ALUMINUM FRAME- RAL7021 BLACK/GREY                                       |
| 7  |  | GLAZED ALUMINUM FRAME DOOR- RAL7021 BLACK/GREY  |
| 8  |  | ALUMINUM FRAME WINDOWS- RAL7021 BLACK/GREY  |
| 9  |  | DENIER SIGNAGE  |
| 10 |  | FEATURE RED LED STRIP LIGHTING  |
| 11 |  | GLAZED ANNOIDIZED ALUMINUM FRAME SKYLIGHT   |

**RECEIVED**  
**DP1178**  
**2022-JAN-22**  
Current Planning

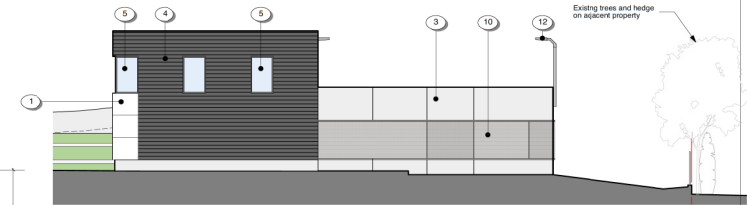
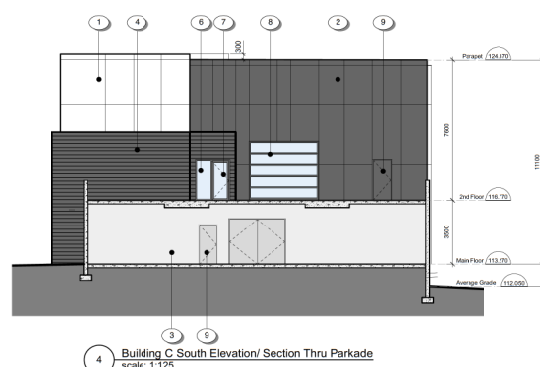
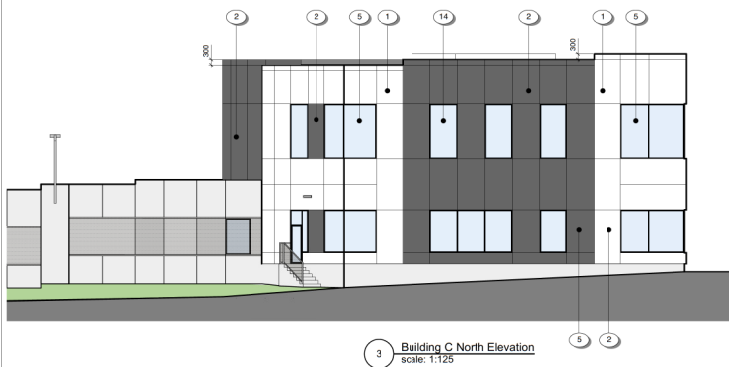
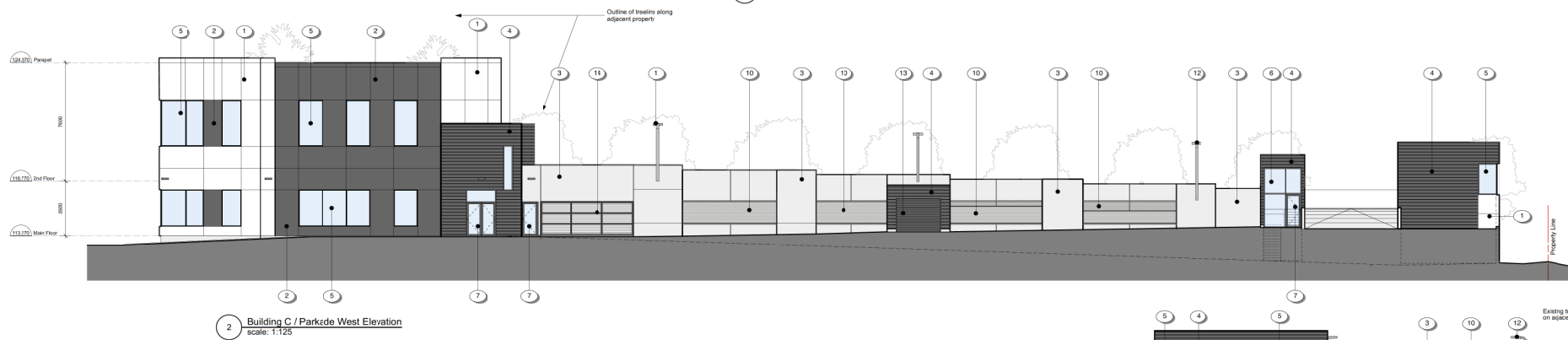
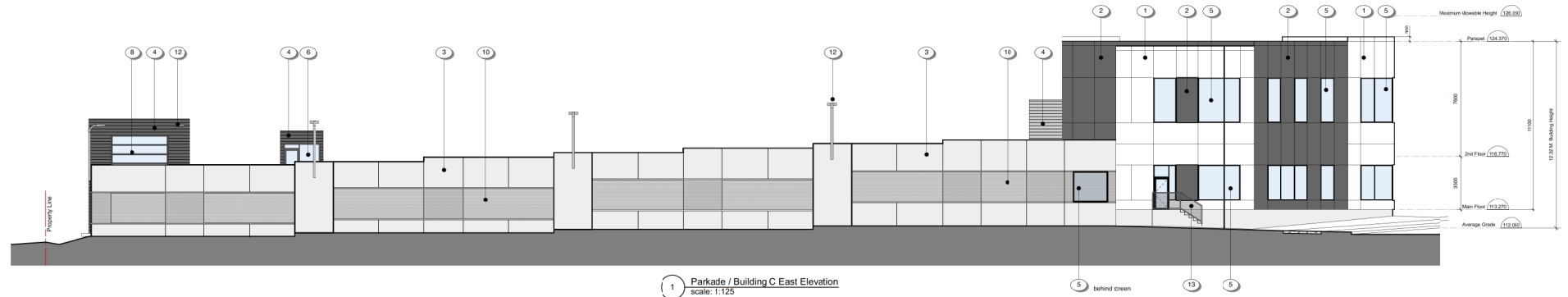
This document has been digitally certified with digital certificate and electronic signature authorized by the Architectural Institute of BC and the Association of Professional Engineers of BC. The authoritative original has been transmitted to you in digital form. Any printed version can be relied upon as a true copy of the original when supplied by the architect, bearing traces of the professional seal and digital certificate, or when printed from the digitally-certified electronic file provided by the architect.



4900 Island Highway

Building B Materials A7a

Project No. 1903  
21 January 2022 Rev. R3  
James E. Irwin ARCHITECT INC.  
Vancouver, B.C. Tel: (604) 222-5595



#### MATERIALS SCHEDULE

- 1 ALUMINUM COMPOSITE MATERIAL (ACM-2)- White
- 2 ALUMINUM COMPOSITE MATERIAL (ACM-4)- Dark Grey
- 3 PAINTED PRECAST CONCRETE PANELS c/w reveal joints- Light Grey
- 4 PREFINISHED METAL SIDING, HORIZONTAL FLUTE- Grey Black, RAL 7021
- 5 BLACK ANODIZED ALUMINUM FRAME WINDOWS
- 6 CURTAIN WALL- Black Anodized Aluminum
- 7 BLACK ANODIZED ALUMINUM FRAME DOOR
- 8 OVERHEAD DOOR- GLAZED BLACK ANODIZED ALUMINUM FRAME
- 9 DOOR - INSULATED METAL- PTD. DARK GREY or BLACK (to match cladding)
- 10 METAL SCREEN ON STEEL FRAME OVER OPENINGS- Galvanized Steel
- 11 PREFINISHED HORIZONTAL LOUVRE- colour to match cladding
- 12 LED LIGHT STANDARD- DARK GREY
- 13 OVERHEAD DOOR- PREFINISHED INSULATED METAL- Grey Black, RAL 7021
- 14 OVERHEAD DOOR- ROLLING METAL SECURITY GRILL- Grey Black, RAL 7021

RECEIVED  
DP-1178  
2022-JAN-22



This document has been digitally certified with digital certificate and emergency recovery authorized by the Architectural Institute of BC and the Association of Professional Engineers of BC. The authoritative original has been transmitted to a digital form. Any printed version can be relied upon as a true copy of the original when supplied by the architect, bearing the signature of the professional seal and digital certificate, or when printed from the digitally-certified electronic file provided by the architect.



4900 Island Highway

Building C-Parkade Elevations A9

Project No. 1604  
21 January 2022 Rev. R3  
James E. Irwin ARCHITECT INC.  
Vancouver, B.C. Tel: (604) 272-5886



1 Building C / Parkade West Elevation  
scale: n.t.s.



2 Parkade South Elevation  
scale: r.t.s.

MATERIALS SCHEDULE

1		ALUMINUM COMPOSITE MATERIAL (ACM-2)- Alabaster A2001-D	8		OVERHEAD DOOR - GLAZED ALUMINUM FRAME- RAL7021 BLACK/GREY
2		ALUMINUM COMPOSITE MATERIAL (ACM-4)- Dark Grey	9		DOOR - INSULATED METAL- Ptd. RAL7021 BLACK/GREY
3		PAINTED PRECAST CONCRETE PANELS c/w reveal joints- Light Grey	10		METAL SCREEN ON STEEL FRAME OVER OPENINGS- GALVANIZED STEEL
4		PREFINISHED METAL SIDING, HORIZONTAL FLUTE- RAL7021 BLACK/GREY	11		PREFINISHED HORIZONTAL LOUVRE- colour to match cladding
5		ALUMINUM FRAME WINDOWS- RAL7021 BLACK/GREY	12		LED LIGHT STANDARD- DARK GREY
6		CURTAIN WALL- Black Anodized Aluminum	13		OVERHEAD DOOR- PREFINISHED INSULATED METAL, BLACK/GREY RAL 7021
7		GLAZED ALUMINUM FRAME DOOR- RAL7021 BLACK/GREY	14		OVERHEAD DOOR- ROLLING METAL SECURITY GRILL- Grey Black, RAL 7021



4900 Island Highway

Building C-Parkade Materials A9a

RECEIVED  
DP1178  
2022-JAN-22  
Current Planning



This document has been digitally certified with digital certificate and electronic signature authorized by the Architectural Institute of BC and the Association of Professional Engineers of BC. The authoritative original has been transmitted to you in digital form. Any printed version can be relied upon as a true copy of the original when supplied by the architect, bearing the signature of the professional seal and digital certificate, or when printed from the digitally-certified electronic file provided by the architect.

Project No. 1604  
21 January 2022 Rev. R3  
James E. Irwin ARCHITECT INC.  
Vancouver B.C. Tel: (604) 222-5595