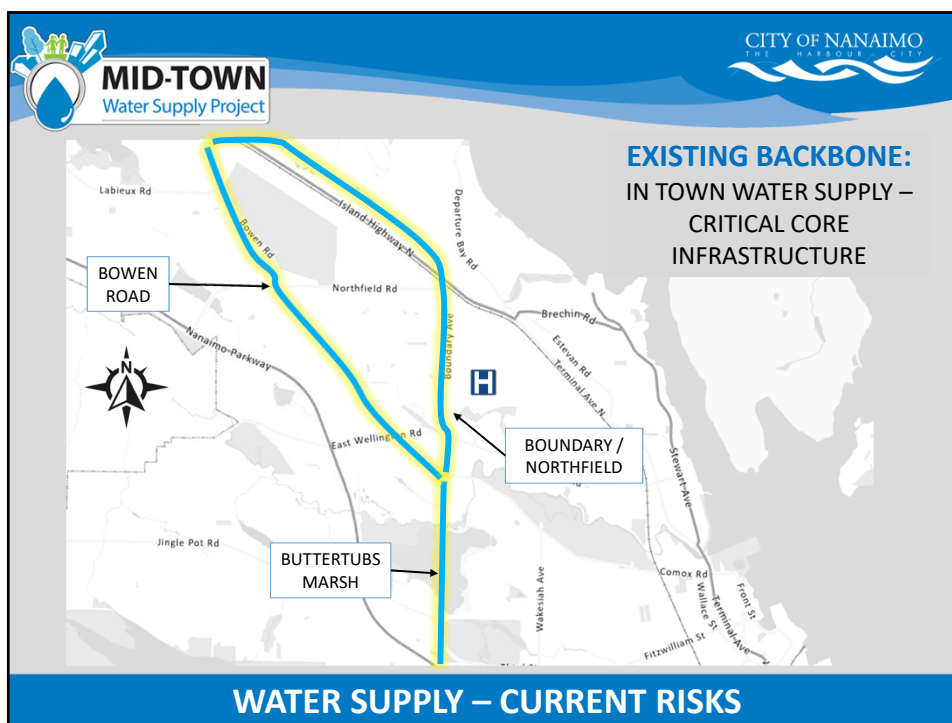




Work to date.....

- Previous Water Supply Strategic Plan focused on water quality objectives.
- Refocused water supply capital plan in concert with Water Supply Strategic Plan Update / REIMAGINE Nanaimo to build system resiliency.

BUILDING A PLAN



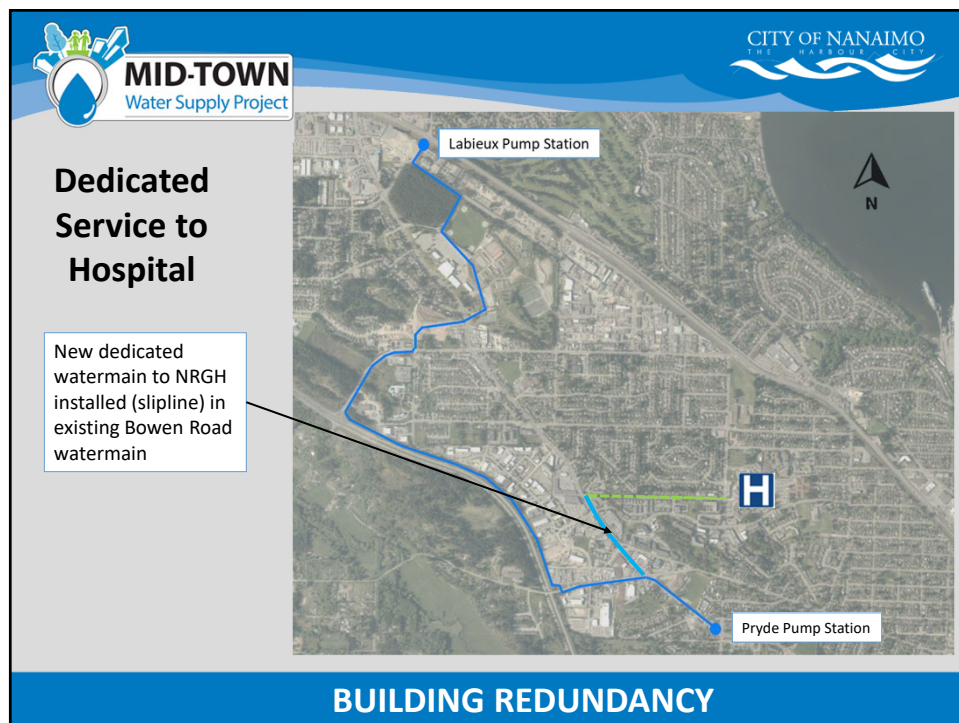
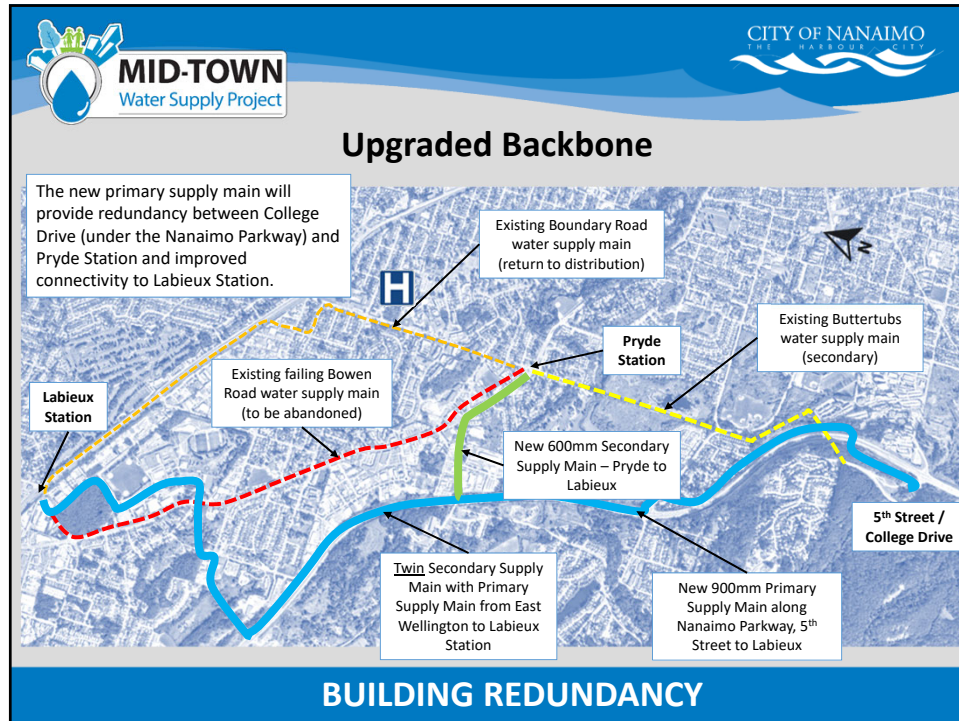
MID-TOWN
Water Supply Project

CITY OF NANAIMO
THE HARBOUR CITY

Significant Failure of a Primary Essential Service:

- April 3, 2020 - 22 million liters of water lost.
- Three reservoirs drained, Hospital + 1000's without water.
- Condition of the pipe revealed other leaks and structural failure.
- Consequence of future failures - extreme risk to water supply.

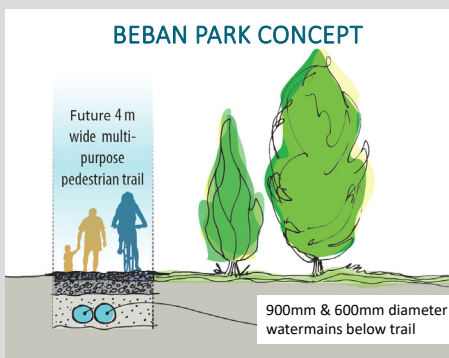
BOWEN ROAD – CURRENT RISK





Integrating with Park and Trailway Master Plans and Active Transportation Goals

Opportunity to build a future trail over top of the water main which will further enhance the community's walkable pedestrian network and provide a strong connection from the E&N Trail to the Parkway Trail and connections to VIU, Westwood, Colliery Park, Buttertubs Marsh, Millstone, West Land Marsh.



BUILDING OPPORTUNITY



Labieux ~~Pump~~ Water Station



- Convert Pump Station to gravity fill north reservoirs
- Future potential for power generation

BUILDING VALUE



Project Risks

- Project has been expedited due to current risk.
- Current budget is based on 30% preliminary design.
- Costs for construction have increased dramatically:
 - Supply / demand of materials costs are volatile.
 - Labour shortage.



Project Costs and Future Works / Schedule

Total Project Budget : \$28.4 million

Preliminary Design Completion – Fall 2021

Negotiated Requests for Proposals (accelerated procurement and allows value added constructability review with the contractor and engineer working together prior to finalized design) – January – out for RFP

Finalized Design – Spring 2022

Construction – Summer 2022 – Spring 2024



BUILDING RESILIENCE

