

# **BEBAN OUTDOOR LEARNING CENTRE**



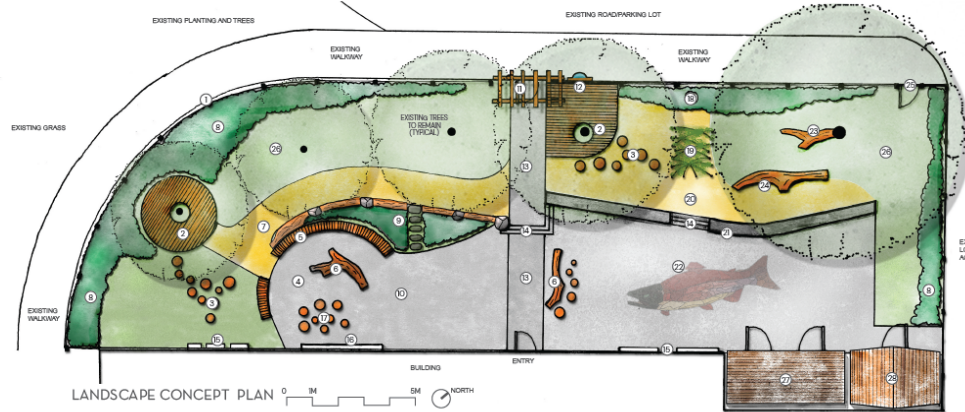
## **DESIGN CONSIDERATIONS**

- To provide an outdoor learning/activity space
- Suitable for diverse abilities from preschool age to grade 7
- Some adult use in evenings
- Include equipment storage
- Retain trees and provide natural landscaping
- Integrate nature play elements
- Resilient and easy to maintain

## DESIGN ELEMENTS SUMMARY

- Design celebrates the region's coastal landscapes through materials and soft, sweeping forms
- Existing trees are retained
- Regraded entry path with arbor, "peekaboo portal", and dedicated accessible route
- Flexible outdoor classroom zone for small circle-time or larger groups
- Concrete seat wall edge adjacent to paved area to provide flexible seating / play opportunities
- Opportunities for nature-inspired / quiet play
- Covered storage area and lockable shed
- Drought tolerant planting at edges
- New, black vinyl coated non-climbable fence

## INSPIRATION IMAGES



## LEGEND

- 1 NEW BLACK VINYL NON-CRIMBABLE FENCE AND GATES
- 2 WOODEN DECK SURROUNDING TREE
- 3 STEPPING STUMPS
- 4 OUTDOOR CLASSROOM ZONE
- 5 BENCH
- 6 LOG SEAT
- 7 FRAM ACCESSIBLE PATH WITH LOGS AND ROCKS
- 8 LOGS ON PAVED SURFACE
- 9 NEW DROUGHT TOLERANT PLANTING
- 10 STEPPING STONES AND SLOPE PLANTING
- 11 NEW ACCESSIBLE SURFACE (TIE)
- 12 NEW ENTRY ARBOR
- 13 PEAKABOO PORTAL
- 14 NEW REGRADED ENTRY WALK (FLUSH WITH ADJACENT SURFACES)
- 15 NEW CIP CONCRETE STEPS
- 16 MURAL / BENCH / PLAY PANELS
- 17 CHALK OR WHITE BOARD
- 18 MOVABLE SEAT LOGS
- 19 EX STREET LIGHT
- 20 WILLOW TUNNEL
- 21 NEW FRAM SURFACE IN AREAS DISTURBED FOR REGRADING
- 22 CIP CONCRETE SEAT WALL 12" - 18" HIGH
- 23 EXISTING CONCRETE SURFACE WITH PAINTED PATTERN / NARRATIVE
- 24 EX FUN TREE ROOTS
- 25 LOG SEAT / TUNNEL
- 26 MAINTENANCE ACCESS / ALT ACCESSIBLE ROUTE
- 27 EX LAWN AREAS
- 28 COVERED STORAGE / STROLLER / STROLLER BAGS
- 29 STORAGE SHED