

## Overview

---

- Weather Outlook
- Equipment
- Staffing
- Material
- Level of Service
- Budget
- Road Operations
- Parks Operations
- What's new for 2022
- Supreme Court of Canada
- Communication
- Top FAQ's



# Weather Outlook

- Seasonal Outlook – La Nina
- Mild but active October-December
- 1-2 Storms bringing snow down to sea level in early 2022
- Contracted Hyper-local forecasts



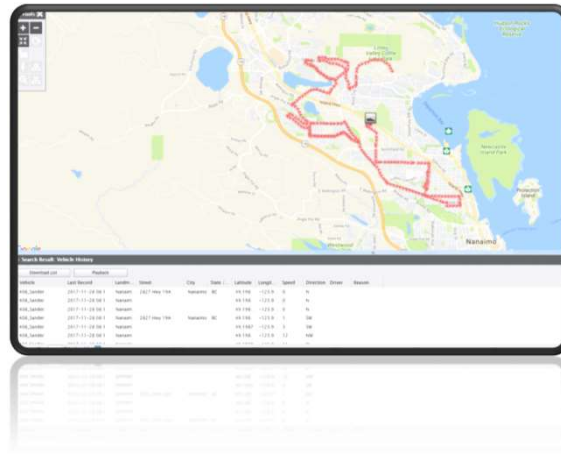
# Equipment

- 18 Winter Equipped Trucks
- Front (18) and Underbody Plows (8)
- Sanders/Salters with Pre-Wet capability
- 3 Anti-icing Brine Applicators
- Backhoe with plow blade
- 3 x tractors with plows
- 2 x riding mowers with front plows (1 x snow blower attachment)
- 2 x utility vehicles each with Sander and Plow
- 1 x walk behind snow blower
- 4 x walk behind spreaders for ice melt



## GPS

- Vehicle tracking in all Winter Maintenance vehicles
- Assists in responding to complaints and claims from the public



## Staffing

### Public Works:

- Trained Staff – 58
- Early Shift – Monday to Friday 5am – 1pm
- Night Patrol

Shift	Sunday	Monday	Tuesday	Wednesday	Thursday	Friday	Saturday
1	5pm- 3am				4pm - Midnight	4pm - 2am	5pm- 3am
2	5am- 5pm	4pm- Midnight	4pm - Midnight				5am- 5pm
3		Midnight- 8am	Midnight- 8am	Midnight- 8am	Midnight- 8am	Midnight- 8am	

### Parks:

- Trained Staff – 20
- 1 shift, no rotation
- SNIC Supervisor on call



## Material

- Salt Shed – 1,000 Tonne capacity
  - 600-800 tonnes kept in stock
- Brine – 32,000 Gallon Storage Capacity
  - 23.3% Salinity
  - Anti-icing
  - Pre-wetting
- Sand Stockpile
  - For road conditions below  $-8^{\circ}\text{C}$



## Level of Service

On a priority basis, the City clears snow from:

- City streets
- City parking lots
- Bus shelters
- City owned public spaces
  - Plazas
  - Stairs
  - Bridges
  - Property frontage
  - Rec Facilities
- Parks
- Trailways
- Bike Lanes

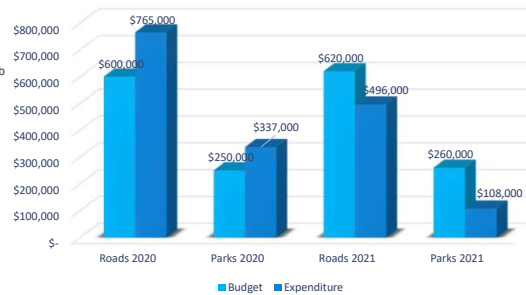


## Budget

- 2020:
  - Total budget \$850,000
  - Total expenditures \$1,132,000 during significant event Jan/Feb 2020
- 2021:
  - Total budget \$880,000
  - Total expenditures to date \$604,000
- Reserve of \$1.2M
  - Maintaining healthy reserves is key to managing budgetary risk.

*Climate change impacts are expected to result in shorter duration, more intense weather events*

Budget and expenditure 2020 Actual and 2021 YTD



## Roads Routes



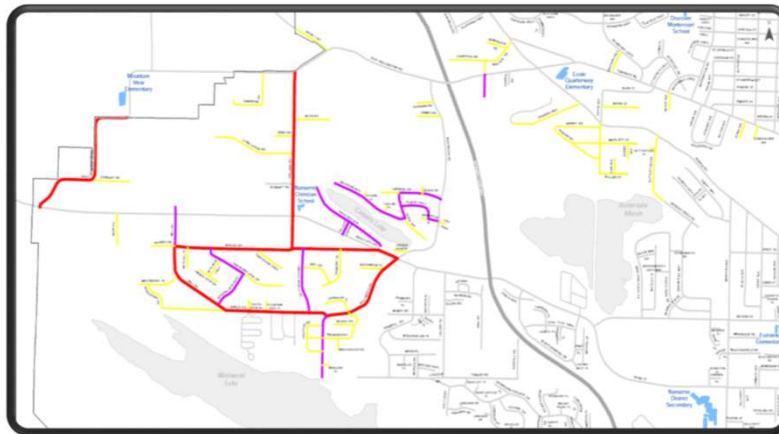
Rebalanced routes for 2021/2022 season, resulting from significant new development areas

## Priority 1 Routes – 320km



- Emergency Routes
  - Major Roads
  - Schools  
(M-F 8am and 2pm)
- Developed with input from:
- City Council and Mayor
  - RCMP
  - RDN Transit
  - Nanaimo Regional General Hospital
  - Fire and Rescue Services
  - School District #68

## Plow Truck Routes



## Contracted Roads



### Contracted Roads for Winter Maintenance

Departure Bay and Hammond Bay Road (19A to 19A)
Aulds Road (19A - 19)
Uplands Drive (Rutherford to Dover)
Dover Road (Uplands to Mary Ellen)
Mary Ellen Drive (Dover to Hwy 19)
Metral Drive (Mostar to Aulds)
Enterprise Way from 19A to Metral
Mostar Road (Hwy 19 to Hwy 19A)
Rutherford Road (Hwy 19A to Uplands)
Jingle Pot Road (north to City Limits)
Northfield Road (Hwy 19 to Hwy 19A)
Terminal Avenue (Brechin to Stewart)
Cedar Road (Hwy to City Limits)
Maughan Road (Duke Road)
Jackson Road

### Provincially Maintained Roads

Nanaimo Parkway (Hwy 19)
Duke Point Highway (Hwy 19)
Island Highway (Hwy 19A)
Brechin Road
Stewart Avenue

## Recreation Facilities

### Contractor

- Attend at 1" snow or by request
- 7.5 Hectares of Parking lot
- Beban
- NIC
- NAC
- OWCC





## Parks Priority 1

- 5 Km sidewalks and stairs in Downtown and at Recreation Centers
- 6 Hectares of Downtown City owned Parking Lots
- Key locations
  - City Hall & SARC
  - Police Station
  - Waterfront Walkway
  - Maffeo Sutton Park



## Parks Priority 2

9km E&N trail

Bike lanes

**New!**

2+ km Downtown Sidewalks

Sidewalks in front of Beban & Bowen

3.5 Hectares of Parking lots:

- Colliery Dam
- Westwood Lake
- Northfield rest stop
- Curling Club





## Parks Priority 3 & 4

### Priority 3:

Paved trails throughout our parks

Larger sidewalks e.g. 3rd St

Sidewalks and trails at play fields

### Priority 4:

Sidewalks around any park



## What's new for 2022




- Development of Snow and Ice Control Policy
- Unified Operational plan – whole City approach (vs Parks and Roads)
- New equipment
  - 4X4 truck coming with plow
  - 2 Kubota's
  - Tandem Truck with Brine Applicator
- Bike lane maintenance
  - Metral Dr.
  - Front St.
  - Bowen Rd.
- Update of Routes
  - roughly 6km of new road added to the routes
  - Review/optimize trucks and routes
- Tablets for truck routes/maps
- Road Weather Information Systems (RWIS)

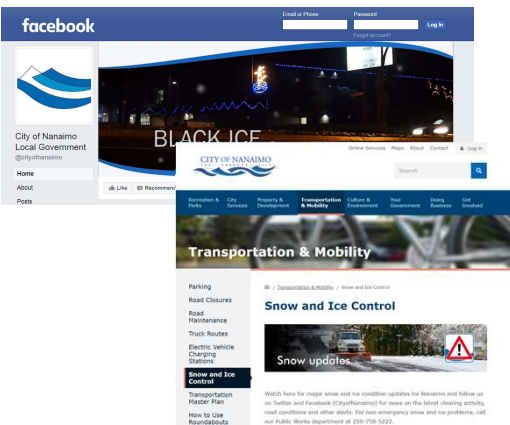
# Supreme Court of Canada

Decision in Marchi v. The City of Nelson

- MIABC Comments regarding the decision:
  - The SCC did not determine that the City was negligent – that case is back to trial
  - This case provides clarity in the distinction between which decisions made by public bodies should be immune from liability because they are core policy decisions and which decisions should be subject to review by the courts
    - In the end it was determined that the City of Nelson's decision to clear snow in the manner that they did was not a core policy decision
  - having well-drafted written policies are essential to ensuring public bodies meet the standard of care when delivering services to their communities
  - "...the outcome of this decision does not substantially change the way you should be delivering services to your community."

## Communications



[@cityofnanaimo](https://twitter.com/cityofnanaimo)  

[City of Nanaimo](https://www.facebook.com/cityofnanaimo)  
 Nanaimo Recycles App  
 Voyent Alert  
[www.nanaimo.ca](http://www.nanaimo.ca)  
 Radio  
 TV News



## Top FAQ's...

Why is the E&N trail plowed before my street?

Who is responsible for clearing the sidewalks?

I am a cyclist, what can I expect of the bike lanes this winter?

When will my street be plowed?

Why does the snow plow push snow on my driveway?

## Questions

[www.nanaimo.ca/transportation-mobility/snow-and-ice-control](http://www.nanaimo.ca/transportation-mobility/snow-and-ice-control)