

## South Nanaimo Mobility – the path forward

- Background
- Current Conditions
- Planned Work
- Potential Work
- Next Big Questions?

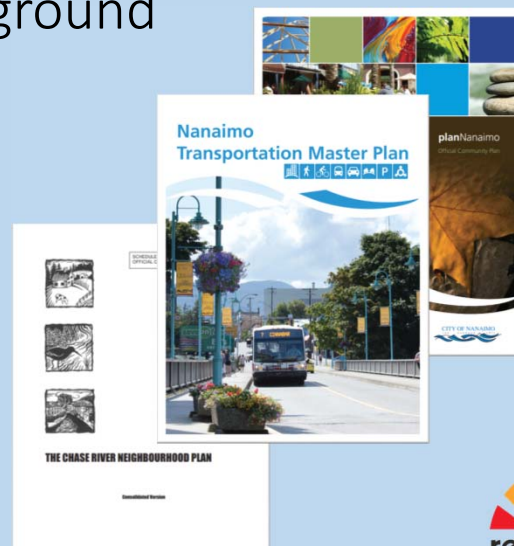
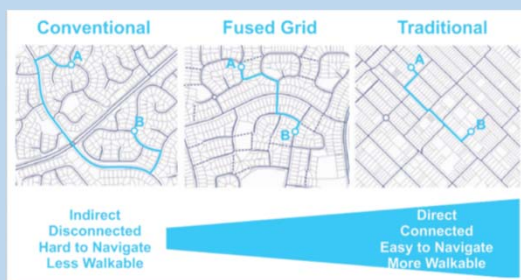


Images courtesy of Nanaimo Community Archives

## South Nanaimo Background

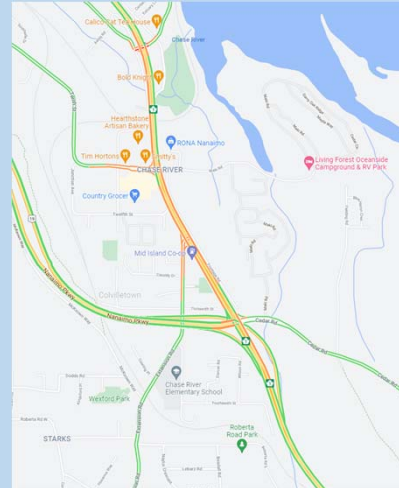
### Key Milestones

- 1970 Residential Development begins
- 1997 Parkway Opens
- 2008 Official Community Plan
- 2009 Sandstone Master Plan adopted
- 2014 Nanaimo Transportation Master Plan
- 2019 Reimagine OCP Update

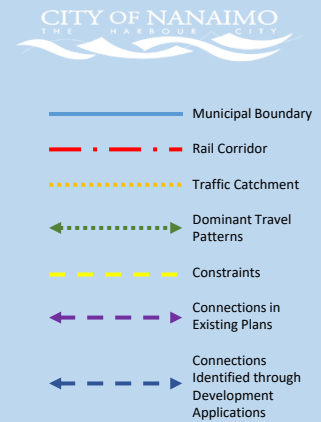
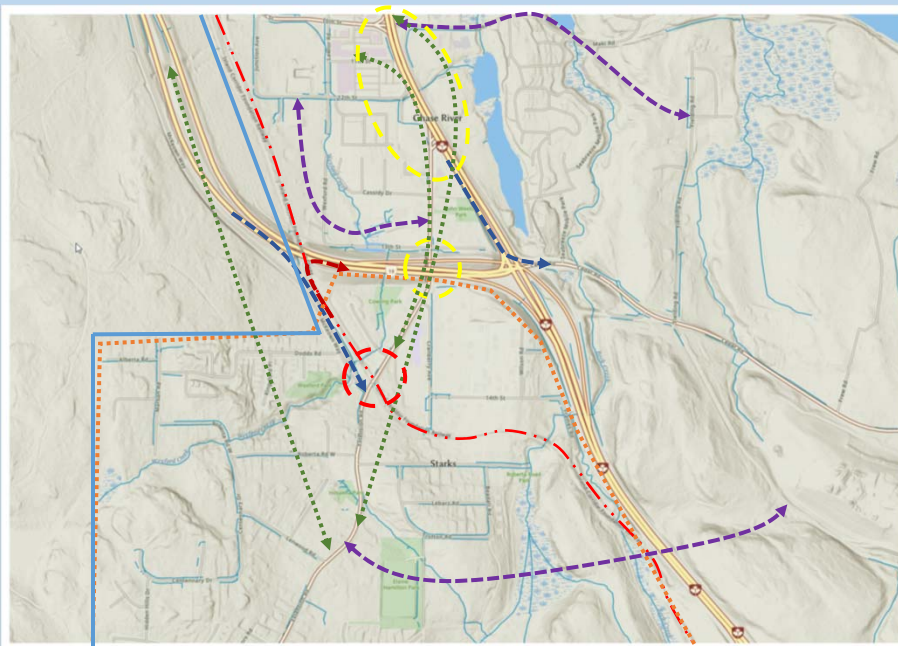


## Current Conditions

Intersection	Intersection Level of Service (2019)	Most Sensitive Movement/LOS	Intersection Demand vs Capacity (%)	Collisions Rates 2016-2019 (MEV*)
Island Hwy Bowen Norwell	F	SB – Left	158	2.3
Bowen Dufferin	C	WB – Left	115	3.0
Bowen Northfield	F	SB – Through/Right	112	3.3
Bowen E. Wellington	C	NB – Left	98	0.9
Bowen Labieux	C	EB – Left	97	1.9
TCH Cranberry	C	SB – Through	89	1.7
TCH Tenth Maki	C	EB – Right	88	2.3
Comox Terminal	C	SB – Left	84	2.7
Bowen Meredith	C	NB/SB – Through	78	1.4
Bowen Wakesiah	C	SB – Through	78	2.2
Bowen Pine	B	EB – Through	75	1.7
TCH Cedar	C	NB – Through	68	2.7
Comox Wallace	B	EB – Through / Left	58	0.9
Bowen Kenworth	B	EB – Through/Left	56	0.7



Google Traffic Delay Typical Weekday Afternoon





## Upcoming Work

### < 6 Months

- MOTI to review signal operations on Trans Canada Highway (TCH)
- City to progress Traffic Calming on Extension Road

### 6-12 Months

- City to undertake Active School Travel plans for both Elementary Schools
- City and MOTI to collaborate to create pedestrian connection between Chase River and Southgate
- MOTI to explore expansion of turn lanes and southbound deceleration lane on the TCH

### >12 Months

- City and MOTI to collaborate on addressing congestion and connectivity
- Bike Lanes on Extension Road 2026/27



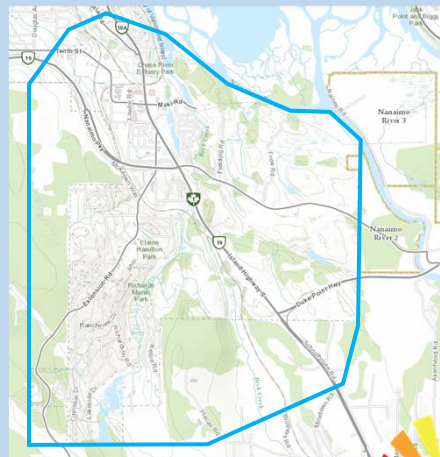
## Potential Work – South Nanaimo Mobility

### Scope:

- Assess conditions, including future land use
- Identify potential options
- Develop Business Case and phasing plan

### Cost:

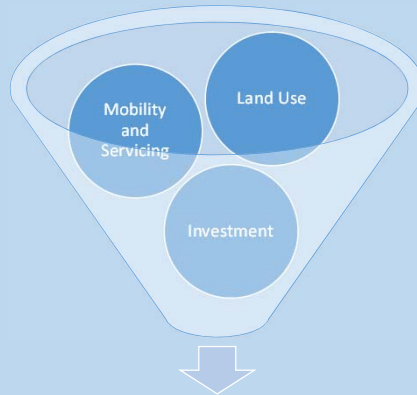
- Approximately \$350,000 (shared with MOTI)
  - \$70,000 currently available
  - Will require approximately 1200 hrs of staff time
- Timeline, approximately 3 years



Study Area



## Big Questions?



Greatest Overall Benefit to the Community

