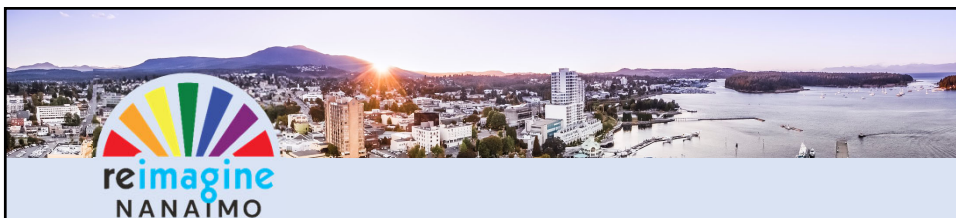




REIMAGINE ENVIRONMENTAL POLICY UPDATE  
2021-OCT-20




## Agenda

1. Process Update (15 minutes)
2. Policy and Action Plan Overview (25 minutes)
3. Next Steps and Project Timeline (5 minutes)




**Our river Our mountain Our ocean**  
 As a painter I have walked this land. I have tried to capture the spirit of this land  
 Our river  
 Our mountain  
 Our ocean  
 This land does not belong to you or I. It belongs to our great great grandchildren.  
 We need to  
 Take care of our rivers  
 Take care of our mountains  
 Take care of our ocean  
 We need to work collectively,  
 One body  
 One mind  
 One spirit.  
 The legacy of our decisions today, our children will write tomorrow.



## Project Overview

**WE ARE HERE!**

 <b>PHASE 1</b> <b>GATHERING IDEAS</b> SUMMER - WINTER 2020	 <b>PHASE 2</b> <b>EXPLORING OPTIONS</b> SPRING - FALL 2021	 <b>PHASE 3</b> <b>DEVELOPING PLANS</b> FALL - WINTER 2021/2022
Phase 1 was about sharing information and listening to the community's ideas for Nanaimo's future.	Phase 2 is focused on identifying and evaluating different options for how our community can achieve its shared vision and goals.	Phase 3 will develop preferred directions into plans, policies, and actions that will guide Nanaimo's future.



**reimagine  
NANAIMO**

## Phase 1 Engagement –



**WHAT ARE OUR PRIORITIES RELATED TO ENVIRONMENT AND CLIMATE CHANGE?**

**STATEMENTS IDENTIFIED AS TOP ENVIRONMENT AND CLIMATE CHANGE PRIORITIES**

- 1 managing impacts to environmentally sensitive areas
- 2 improving solid waste management of organics and reducing, reusing, and recycling
- 3 managing impacts to urban streams and wetlands related to human activities

**OTHER COMMONLY MENTIONED PRIORITIES INCLUDE:**

- Improving the multi-modal transportation network
- Offering environmental education opportunities
- Creating green land-use plans and policies
- Enhancing and supporting local food systems

**HOW IMPORTANT ARE ENVIRONMENT AND CLIMATE CHANGE ISSUES?**

Over 60% of respondents in both surveys rated every environment / climate change issue in the surveys as very important or important

Typically, public questionnaire participants placed a slightly higher level of importance on environmental and climate change statements than statistical survey participants

- In general, people love Nanaimo's access to nature but are concerned about loss of natural areas
- Market environmental successes, more to create, more behavioral change
- Indicators and Targets need to reflect more than satisfaction (intangible qualities)
- More networking and direction with volunteer groups
- Place-based survey with neighbourhood groups



**reimagine  
NANAIMO**

## Phase 2 Engagement –2200 participants

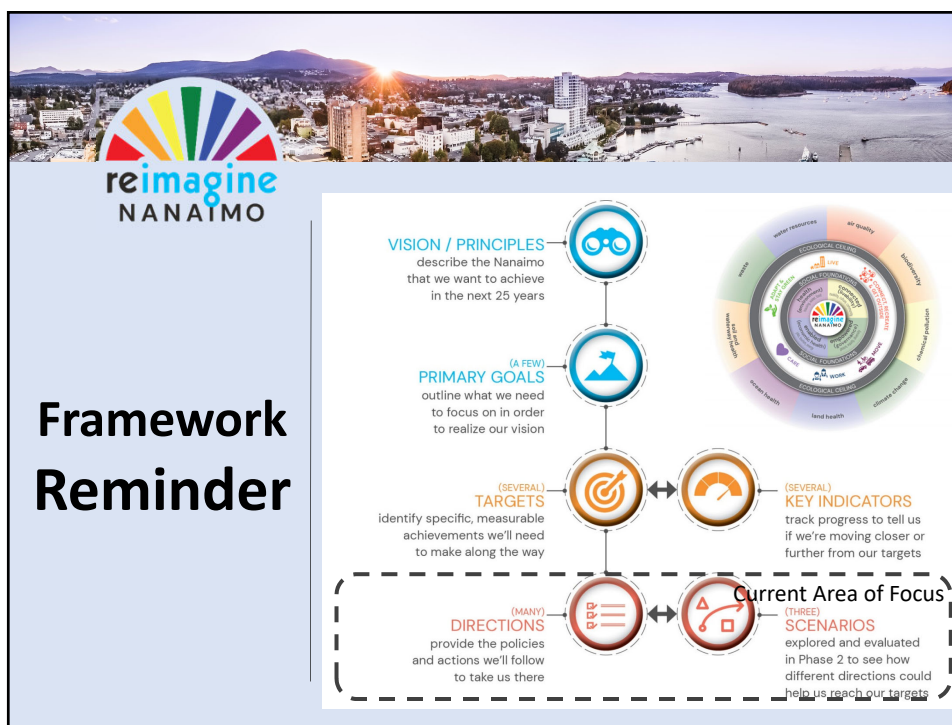


- 8 public workshops and many stakeholder groups (incl. NALT)
- 2 representative sample workshops
- 2 online surveys
- Youth engagement (high schools, art kits, LIT/Quest)
- Community outreach (tourist kiosks, pop-up booths, COVID clinic, community spirit team, static info in public space)
- Social Media (TikTok pilot, Facebook, Instagram, Twitter)



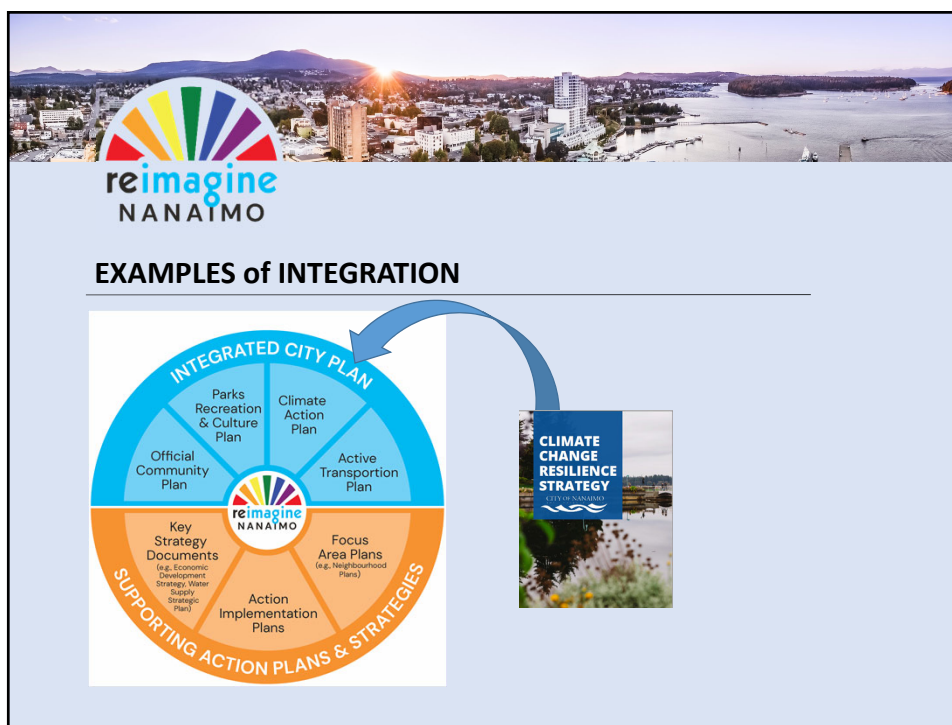
## Phase 2 Engagement Summary


- Early themes being identified
- Draft targets and indicators being finalized using input
- Full Phase 2 Engagement Summary by November 2021
- Emerging workshop themes included:
  - Conserving natural assets
  - Creating walkable neighbourhoods
  - Transit improvements to support less car trips
  - Wildlife corridors to connect open spaces
  - Active Transportation important to addressing climate change/GHGs
  - Positive scenario features in both scenario 2 and 3











**reimagine  
NANAIMO**

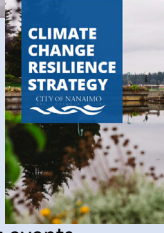
**Topic: Climate Change/Environment and Hazards**

**Goal:** A Green Nanaimo

**City Plan Policy:** Improve community capacity and resilience following events by increasing public awareness of climate change, its expected impacts, and how the community can prepare

**Action Plan:**

- Develop a sea level rise DPA with guidelines for new development/renovation and infrastructure placement in areas at risk of coastal flooding
- Identify forest interface wildfire risk areas adjacent to residential areas and City infrastructure, and establish a wildfire DPA




**reimagine  
NANAIMO**

## Development Permit Areas

Justification and Objectives in City Plan  
DPA Guidelines in Zoning Bylaw | Best Practice and Greater Enforceability

**Existing DPAs – Proposed refinements to:**

- DPA 1 through DPA 9 and HCA1
- More details on DPA 1 to follow

**\*New DPAs Under Consideration\***

- Sea Level Rise
- Coal Mine Hazard
- Wildfire Interface

No.	Development Permit Area (DPA)
1	Watercourses (DPA1)
2	Environmentally Sensitive Areas (DPA2)
3	Natural Hazard Lands (DPA3)
4	Nanaimo Parkway Design (DPA4)
5	Steep Slope Development (DPA5)
6	Stewart Avenue Corridor (DPA6)
7	North Terminal Avenue Area (DPA7)
8	Old City Neighbourhood (DPA8)
9	Commercial, Industrial, Institutional, Multiple Family and Mixed Commercial/Residential Development (DPA9)



**reimagine**  
NANAIMO

**CLIMATE CHANGE RESILIENCE STRATEGY**  
CITY OF NANAIMO

**Topic: Climate Change/Well-being and Preparedness**

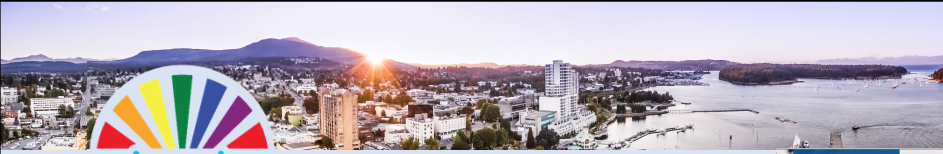
 **Goal:** A Green Nanaimo

 **City Plan Policy:** Continue to work with community partners to minimize health impacts of extreme weather (higher heat days and poor air quality from wildfires) on residents

 **Action Plan:**

- Develop an Extreme Heat Response Strategy that includes information on cooling spaces that can serve community members during heat waves
- Work with Island Health and other stakeholders to deliver coordinated information on what the public can do during heat waves and poor air quality events


**\*\*Note actions underway through heat response strategy\*\***





**reimagine**  
NANAIMO

**CLIMATE CHANGE RESILIENCE STRATEGY**  
CITY OF NANAIMO

**Topic: Climate Change/Flooding and Drainage**

 **Goal:** A Green Nanaimo

 **City Plan Policy:** Strive to minimize urban and overland flooding resulting from heavy rainfall

 **Action Plan:**

- Incorporate natural systems that help control storm water flows (i.e. bioswales) into capital planning projects


**\*\*Note that this is an action that reinforces what is currently done through City capital projects (e.g. Boxwood Connector Project)\*\***






**reImagine**  
NANAIMO

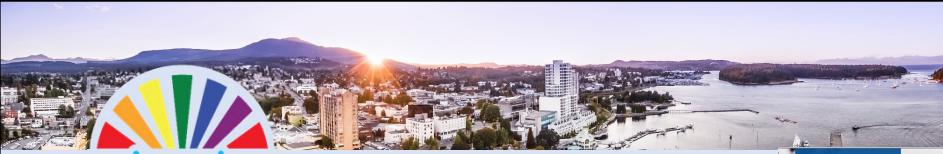
**Topic: Climate Change/Government**

 **Goal:** A Green Nanaimo

 **City Plan Policy:** Improve the city's agility in responding and recovering from climate related hazard events

 **Action Plan:**


- Incorporate climate change resilience into the review and development of asset management plans
- Ensure contingency reserves that contain an allowance for recovery from climate related events





**reImagine**  
NANAIMO

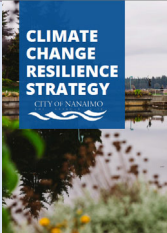
**Topic: Climate Change/Partnerships**

 **Goal:** A Green Nanaimo

 **City Plan Policy:** Work with neighbouring jurisdictions to support climate change resilience and limit transfer of risk across jurisdictional boundaries

 **Action Plan:**

- Continue to work with the Snuneymuxw First Nation and other regional partners on the Nanaimo Estuary management committee and Nanaimo River watershed routable to support climate adaption initiatives that conserve and enhance habitat and protect property within the watershed





## Behavioral Change

