

ATTACHMENT F BUILDING ELEVATIONS AND DETAILS

ELEVATIONS LEGEND

- 01 WOOD LOOK CEMENTITIOUS SHIPLAP SIDING
- 02 CORRUGATED METAL CLADDING (CHARCOAL)
- 03 ALUMINUM COMPOSITE PANELS, 4mm THICKNESS, WHITE FINISH
- 04 VINYL CLAD DOORS & WINDOWS, BLACK UV CURE PAINTED FINISH
- 05 POWDER COATED ALUMINUM GUARDRAIL, WHITE FINISH, CLEAR TEMPERED GLASS INFILL
- 06 POWDER COATED ALUMINUM GUARDRAIL, WHITE FINISH, PERFORATED CORRUGATED METAL INFILL
- 07 EXPOSED CONCRETE, NATURAL COLOR, SACK-RUBBED FINISH
- 08 EXPOSED CONCRETE, GREY, BOARD FORM FINISH
- 09 ALUMINUM STONEFRONT, BLACK ANODIZED DOOR & WINDOW FRAMES, CLEAR TEMPERED & ANNEALED GLASS
- 10 BACKLIT ALUMINUM LETTER SIGNAGE
- 11 ROOF PARAPET FLASHING
- 12 CORTEN STEEL



1 | ELEVATION - BUILDING A - WENTWORTH ST
SCALE: 1:125

Maximum permitted Building Height

ELEVATIONS LEGEND

- 01 WOOD LOOK CEMENTITIOUS SHIPLAP SIDING
- 02 CORRUGATED METAL CLADDING (CHARCOAL)
- 03 ALUMINUM COMPOSITE PANELS, 4mm THICKNESS, WHITE FINISH
- 04 VINYL CLAD DOORS & WINDOWS, BLACK UV CURE PAINTED FINISH
- 05 POWDER COATED ALUMINUM GUARDRAIL, WHITE FINISH, CLEAR TEMPERED GLASS INFILL
- 06 POWDER COATED ALUMINUM GUARDRAIL, WHITE FINISH, PERFORATED CORRUGATED METAL INFILL
- 07 EXPOSED CONCRETE, NATURAL COLOR, SACK-RUBBED FINISH
- 08 EXPOSED CONCRETE, GREY, BOARD FORM FINISH
- 09 ALUMINUM STONEFRONT, BLACK ANODIZED DOOR & WINDOW FRAMES, CLEAR TEMPERED & ANNEALED GLASS
- 10 BACKLIT ALUMINUM LETTER SIGNAGE
- 11 ROOF PARAPET FLASHING
- 12 CORTEN STEEL



Maximum permitted Building Height

1 | ELEVATION - BUILDING A - RICHARDS ST
SCALE: 1 : 125

RECEIVED
D 1 2 1 4
2020 NOV 24
CUTRUST PLANNING



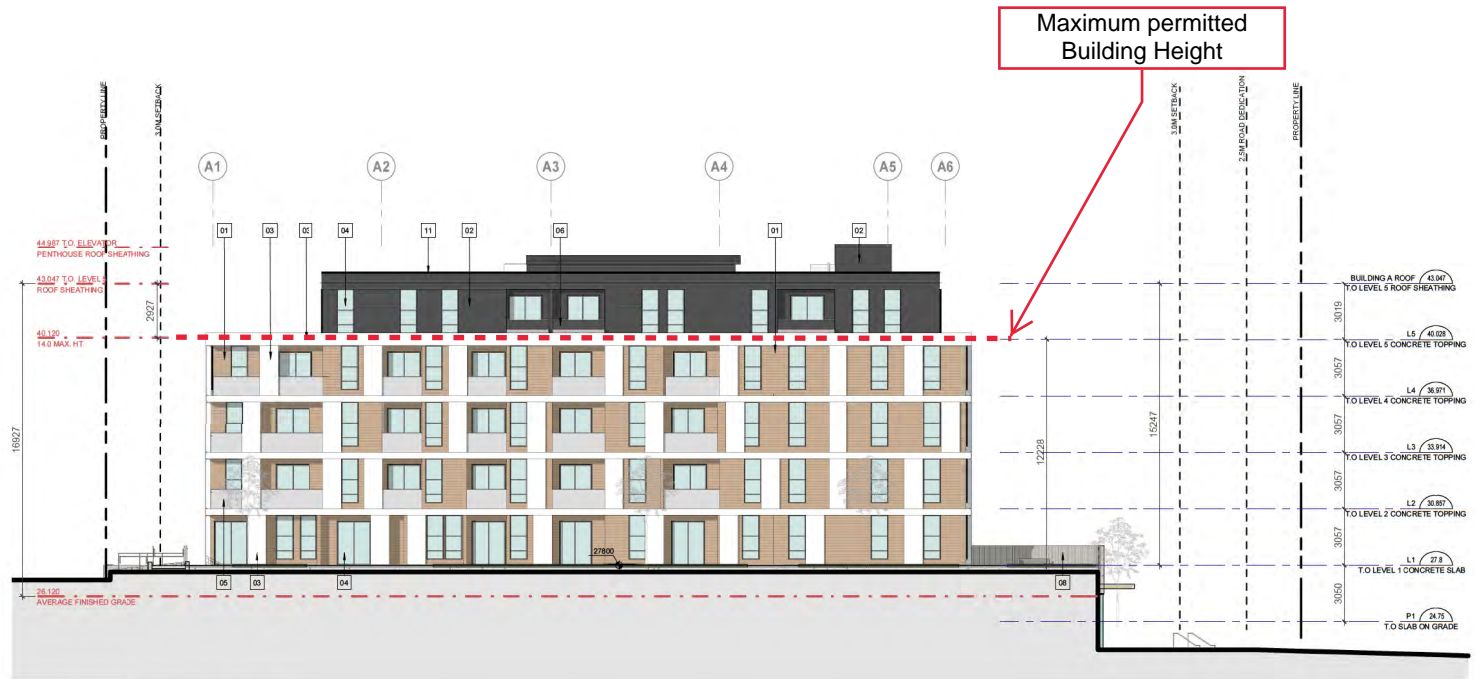
TELUS LIVING - NANAIMO
400 FITZWILLIAM ST. NANAIMO, BC, CANADA

ELEVATIONS BUILDING A
SCALE: As indicated 11/19/2020

A4.2

ELEVATIONS LEGEND

- 01 WOOD LOOK CEMENTITIOUS SHIPLAP SIDING
- 02 CORRUGATED METAL CLADDING (CHARCOAL)
- 03 ALUMINUM COMPOSITE PANELS, 4mm THICKNESS, WHITE FINISH
- 04 VINYL CLAD DOORS & WINDOWS, BLACK UV CURE PAINTED FINISH
- 05 POWDER COATED ALUMINUM GUARDRAIL, WHITE FINISH, CLEAR TEMPERED GLASS INFILL
- 06 POWDER COATED ALUMINUM GUARDRAIL, WHITE FINISH, PERFORATED CORRUGATED METAL INFILL
- 07 EXPOSED CONCRETE, NATURAL COLOR, SACK-RUBBED FINISH
- 08 EXPOSED CONCRETE, GREY, BOARD FORM FINISH
- 09 ALUMINUM STONEFRONT, BLACK ANODIZED DOOR & WINDOW FRAMES, CLEAR TEMPERED & ANNEALED GLASS
- 10 BACKLIT ALUMINUM LETTER SIGNAGE
- 11 ROOF PARAPET FLASHING
- 12 CORTEN STEEL



1 | ELEVATION - BUILDING A - COURTYARD
SCALE: 1 : 125

ELEVATIONS LEGEND

- 01 WOOD LOOK CEMENTITIOUS SHIPLAP SIDING
- 02 CORRUGATED METAL CLADDING (CHARCOAL)
- 03 ALUMINUM COMPOSITE PANELS, 4mm THICKNESS, WHITE FINISH
- 04 VINYL CLAD DOORS & WINDOWS, BLACK UV CURE PAINTED FINISH
- 05 POWDER COATED ALUMINUM GUARDRAIL, WHITE FINISH, CLEAR TEMPERED GLASS INFILL
- 06 POWDER COATED ALUMINUM GUARDRAIL, WHITE FINISH, PERFORATED CORRUGATED METAL INFILL
- 07 EXPOSED CONCRETE, NATURAL COLOR, SACK-RUBBED FINISH
- 08 EXPOSED CONCRETE, GREY, BOARD FORM FINISH
- 09 ALUMINUM STOREFRONT, BLACK ANODIZED DOOR & WINDOW FRAMES, CLEAR TEMPERED & ANNEALED GLASS
- 10 BACKLIT ALUMINUM LETTER SIGNAGE
- 11 ROOF PARAPET FLASHING
- 12 CORTEN STEEL



1 | ELEVATION - BUILDING B - GARDEN COURT
SCALE: 1:125



TELUS LIVING - NANAIMO
400 FITZWILLIAM ST. NANAIMO, BC, CANADA

ELEVATIONS BUILDING B
SCALE: As indicated 11/19/2020



RECEIVED
2020-NOV-24
CULBERT PLANNING

A4.5

ELEVATIONS LEGEND

- 01 WOOD LOOK CEMENTITIOUS SHIPLAP SIDING
- 02 CORRUGATED METAL CLADDING (CHARCOAL)
- 03 ALUMINUM COMPOSITE PANELS, 4mm THICKNESS, WHITE FINISH
- 04 VINYL CLAD DOORS & WINDOWS, BLACK UV CURE PAINTED FINISH
- 05 POWDER COATED ALUMINUM GUARDRAIL, WHITE FINISH, CLEAR TEMPERED GLASS INFILL
- 06 POWDER COATED ALUMINUM GUARDRAIL, WHITE FINISH, PERFORATED CORRUGATED METAL INFILL
- 07 EXPOSED CONCRETE, NATURAL COLOR, SACK-RUBBED FINISH
- 08 EXPOSED CONCRETE, GREY, BOARD FORM FINISH
- 09 ALUMINUM STOREFRONT, BLACK ANODIZED DOOR & WINDOW FRAMES, CLEAR TEMPERED & ANNEALED GLASS
- 10 BACKLIT ALUMINUM LETTER SIGNAGE
- 11 ROOF PARAPET FLASHING
- 12 CORTEN STEEL



1 | ELEVATION - BUILDING B - RICHARDS ST
SCALE: 1:125

RECEIVED
DP 121.4
2020-NOV-24
CITY OF NANAIMO



TELUS LIVING - NANAIMO
400 FITZWILLIAM ST. NANAIMO, BC, CANADA

ELEVATIONS BUILDING B
SCALE: As indicated 11/19/2020

A4.6

ELEVATIONS LEGEND

- 01 WOOD LOOK CEMENTITIOUS SHIPLAP SIDING
- 02 CORRUGATED METAL CLADDING (CHARCOAL)
- 03 ALUMINUM COMPOSITE PANELS, 4mm THICKNESS, WHITE FINISH
- 04 VINYL GLAZ DOORS & WINDOWS, BLACK UV CURE PAINTED FINISH
- 05 POWDER COATED ALUMINUM GUARDRAIL, WHITE FINISH, CLEAR TEMPERED GLASS INFILL
- 06 POWDER COATED ALUMINUM GUARDRAIL, WHITE FINISH, PERFORATED CORRUGATED METAL INFILL
- 07 EXPOSED CONCRETE, NATURAL COLOR, SACK-RUBBED FINISH
- 08 EXPOSED CONCRETE, GREY, BOARD FORM FINISH
- 09 ALUMINUM STOREFRONT, BLACK ANODIZED DOOR & WINDOW FRAMES, CLEAR TEMPERED & ANGGLED GLASS
- 10 BACKLIT ALUMINUM LETTER SIGNAGE
- 11 ROOF PARAPET FLASHING
- 12 CORTEN STEEL



1 | ELEVATION - BUILDING B - BACK OF BUILDING
SCALE: 1:125

RECEIVED
DP 1214
2020-NOV-24
CITY OF NANAIMO



TELUS LIVING - NANAIMO
400 FITZWILLIAM ST. NANAIMO, BC, CANADA

ELEVATIONS BUILDING B
SCALE: As indicated 11/19/2020

A4.7

ELEVATIONS LEGEND

- 01 WOOD LOOK CEMENTITIOUS SHIPLAP SIDING
- 02 CORRUGATED METAL CLADDING (CHARCOAL)
- 03 ALUMINUM COMPOSITE PANELS, 4mm THICKNESS, WHITE FINISH
- 04 VINYL CLAD DOORS & WINDOWS, BLACK UV CURE PAINTED FINISH
- 05 POWDER COATED ALUMINUM GUARDRAIL, WHITE FINISH, CLEAR TEMPERED GLASS INFILL
- 06 POWDER COATED ALUMINUM GUARDRAIL, WHITE FINISH, PERFORATED CORRUGATED METAL INFILL
- 07 EXPOSED CONCRETE, NATURAL COLOR, SACK-RUBBED FINISH
- 08 EXPOSED CONCRETE, GREY, BOARD FORM FINISH
- 09 ALUMINUM STOREFRONT, BLACK ANODIZED DOOR & WINDOW FRAMES, CLEAR TEMPERED & ANNEALED GLASS
- 10 BACKLIT ALUMINUM LETTER SIGNAGE
- 11 ROOF PARAPET FLASHING
- 12 CORTEN STEEL



1 | ELEVATION - BUILDING B - WALLACE ST
SCALE: 1:125

RECEIVED
2020-NOV-24
CITY OF NANAIMO



TELUS LIVING - NANAIMO
400 FITZWILLIAM ST. NANAIMO, BC, CANADA

ELEVATIONS BUILDING B
SCALE: As indicated 11/19/2020

A4.8



1 | ELEVATION - SITE - RICHARDS ST
SCALE: 1 : 200



2 | ELEVATION - SITE - WALLACE ST
SCALE: 1 : 200



3 | ELEVATION - SITE - WENTWORTH ST
SCALE: 1 : 200

RECEIVED
DPT 24
2020-NOV-24
City of Nanaimo





MATERIAL PALETTE

- 1 - WHITE ALUMINUM COMPOSITE PANEL
- 2 - WOOD LOOK SHIPLAP SIDING
- 3 - CORRUGATED METAL CLADDING, PREFINISHED
- 4 - PERFORATED CORRUGATED METAL PANEL
- 5 - GLASS PANEL, CLEAR

RECEIVED
DP1534
2020-NOV-24
CITY OF NANAIMO

