

EXTERIOR FINISHES LEGEND
TO BE READ IN CONJUNCTION WITH DETAILS

- 1 HORIZONTAL HARDIE LAP SIDING, COLOUR: RICH ESPRESSO
- 2 VERTICAL HARDIEBOARD & CEDAR BATTEN SIDING, COLOUR: TUSCAN GOLD
- 3 HARDIE PANEL, COLOUR: NIGHT GREY
- 4 VINYL NAIL ON FLANGE, DOUBLE GLAZED WINDOWS INSULATED FIBREGLASS & METAL EXTERIOR DOORS
- 5 CLEAR GLASS GUARD RAIL
- 6 24 GAUGE PRE-FINISHED METAL FASCIA CASCADIA CHARCOAL SMP
- 7 HARDIE SOFFITING, WOODGRAIN CEDAR TONE
- 8 BASALT STONE, ROUGH EDGE, c/w CONCRETE CAP
- 9 SBS TORCH-ON ROOFING MEMBRANE
- 10 EXPOSED CONCRETE
- 11 GULLAM BEAMS STAINED SPOKA, SEMI-TRANSPARENT, BUTTERNUT #251
- 12 POSTS - STAINED TO MATCH GULLAMS
- 13 PRE-STAINED & PRE-DRILLED 2x VERTICAL CEDAR SCREEN AT STAIRWELLS WITH 2.5" GAP. STAINED TO MATCH GULLAMS
- 14 METAL GARAGE ROLLER DOOR - ANODIZED ALUMINUM
- 15 STUCCO FINISH - COOL GREY COLOUR (CONCRETE-LIKE)

1 West Elevation
1/8" : 1'-0"



2 East Elevation
1/8" : 1'-0"

Building Elevations
Hammond Bay Residences
6010 Hammond Bay Road, Nanaimo, BC

No.	Revision:	Date:	No.	Revision:	Date:
	DEVELOPMENT PERMIT	21 SEPT 2018		CLIENT / BCH REVIEW	15 DEC 2020
	DESIGN PANEL	22 NOV 2018		PROGRESS	22 JAN 2021
	PROGRESS SET	31 JAN 2019		BUILDING PERMIT	12 MAR 2021
	PROGRESS SET	31 MAY 2019		CLIENT REVIEW	23 MAR 2021
	PROGRESS SET	02 JULY 2019		SIBING TENDER	14 MAY 2021
	PROGRESS SET	27 AUG 2019		DP RESUBMISSION	25 MAY 2021
	COORDINATION	28 OCT 2019			
	BUILDING PERMIT	06 JAN 2020			

RECEIVED
DP1238
2021-MAY-25
Curious Planning

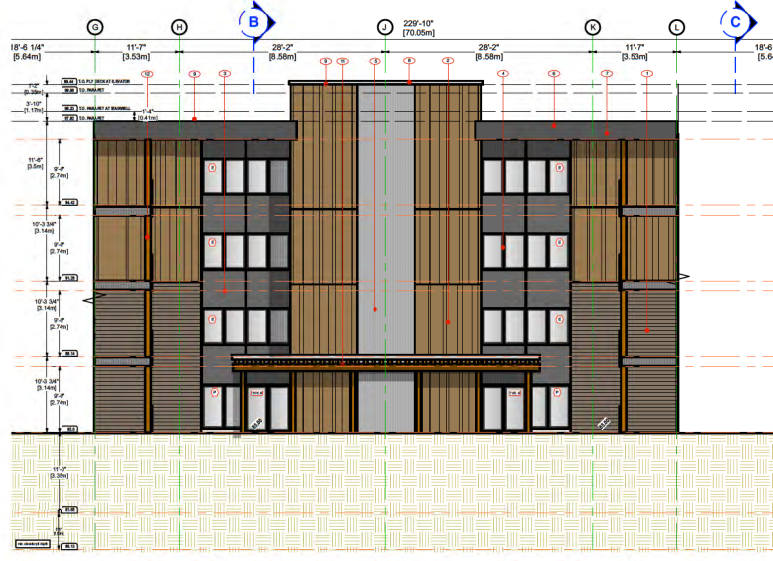
MAXIMUM ALLOWABLE HEIGHT FOR COR1 ZONING 18.0M
(14m + 4m (at least 75% of the required parking area))

Sealed:	This document contains copyrighted material belonging to Munsloch Company Architects + Planners Ltd. Any unauthorized use, disclosure, or duplication of any information contained herein may result in liability under applicable laws.	Drawn By:	Scale:
		BM/TT	1/8" : 1'-0" imp
		Project No:	Sheet No:
		17.19	A-3.2

MUNSLOCH COMPANY
Architecture + Planning Ltd.
#108 - 4318 Main St.
PO Box 1234
Whistler, B.C. V0N 1B0
Ph: 250-692-2141 / 250-692-8923
e-mail: munsloch@munsl.com



1 South Courtyard Elevation
1/8" : 1'-0"



2 East Courtyard Elevation
1/8" : 1'-0"



3 North Courtyard Elevation
1/8" : 1'-0"

EXTERIOR FINISHES LEGEND
TO BE READ IN CONJUNCTION WITH DETAILS

- 1 HORIZONTAL HARDIE L&P SIDING, COLOUR: RICH ESPRESSO
- 2 VERTICAL HARDIEBOARD & CEDAR BATTEN SIDING, COLOUR: TUSCAN GOLD
- 3 HARDIE PANEL, COLOUR: NIGHT GREY
- 4 VINYL NAIL ON FLANGE DOUBLE GLAZED WINDOWS INSULATED FIBREGLASS & METAL EXTERIOR DOORS
- 5 CLEAR GLASS GUARD RAIL
- 6 24 GAUGE PRE-FINISHED METAL FASCIA CASCADIA CHARCOAL SMP
- 7 HARDIE SOFFITTING, WOODGRAIN CEDAR TONE
- 8 BASALT STONE, ROUGH EDGE, c/w CONCRETE CAP
- 9 SBS TORCH-ON ROOFING MEMBRANE
- 10 EXPOSED CONCRETE
- 11 GLULAM BEAMS STAINED BROWN, SEMI-TRANSPARENT, BUTTERNUT #251
- 12 POSTS - STAINED TO MATCH GLULAMS
- 13 PRESTAINED & PRE-DRILLED 2"x VERTICAL CEDAR SCREEN AT STAIRWELLS WITH 2.5" GAP; STAINED TO MATCH GLULAMS
- 14 METAL GARAGE ROLLER DOOR - ANODIZED ALUMINIUM
- 15 STUCCO FINISH - COOL GREY COLOUR (CONCRETE-LIKE)

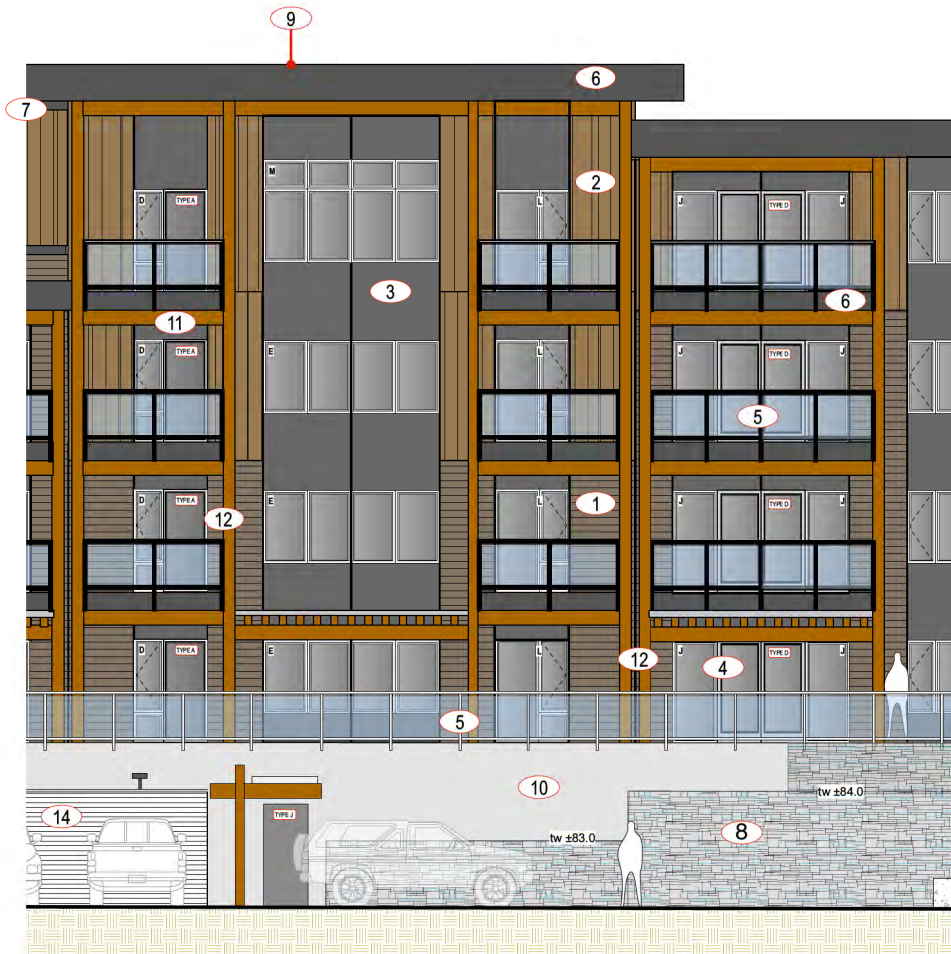
Courtyard Building Elevations
Hammond Bay Residences
6010 Hammond Bay Road, Nanaimo, BC

No.	Revision:	Date:	No.	Revision:	Date:
	PROGRESS SET	31.JAN.2019		BUILDING PERMIT	12.MAR.2021
	PROGRESS SET	31.MAY.2019		CLIENT REVIEW	23.MAR.2021
	PROGRESS SET	02.JULY.2019		SIDING TENDER	14.MAY.2021
	PROGRESS SET	27.AUG.2019		DP RESUBMISSION	25.MAY.2021
	COORDINATION	28.OCT.2019			
	BUILDING PERMIT	08.JAN.2020			
	CLIENT I&H REVIEW	15.FEB.2020			
	PROGRESS	22.JAN.2021			

MAXIMUM ALLOWABLE HEIGHT FOR COR1 ZONING 18.0M
(14m + 4m (at least 75% of the required parking area))

Sealed:	This document contains copyrighted material belonging to Murdoch-Compass Architecture + Planning Ltd. Any unauthorized use, disclosure, or duplication of any information contained herein may result in liability under applicable laws.	Architect + Planning Ltd. P.O. Box 1294 #108 - 4319 Main St. Whistler, B.C. V8W 1S0 Ph: 365-6992 Fax: 365-6993 e-mail: murdoch@mlus.net	Drawn By: BM/TT	Scale: 1/8" : 1'-0" imp
			Project No: 17.19	Sheet No: A-3.3

RECEIVED
DP1236
2021-MAY-25
Curran Planning



<p>1 HORIZONTAL HARDIE LAP SIDING RICH ESPRESSO</p> <p>2 VERTICAL, RANDOM-SPACED HARDIEBOARD & CEDAR BATTEN TUSCAN GOLD</p> <p>3 HARDIE PANEL WITH REVEALS NIGHT GRAY</p> <p>4 VINYL WINDOWS & VINYL + ALUM STOREFRONT EXTERIOR DOORS</p> <p>5 PRE-PAINTED ALUM GUARDRAIL w/ GLASS INFILL</p> <p>6 24GA PRE-FINISHED METAL FASCIA AND FLASHINGS CASCADIA CHARCOAL SMP</p> <p>7 HARDIE VENTED CEDARMILL SOFFIT SQUASH COLOUR</p> <p>8 BASALT STONE, ROUGH EDGE w/ CONCRETE CAP</p>	<p>9 SBS TORCH-ON ROOFING MEMBRANE</p> <p>10 EXPOSED CONCRETE</p> <p>11 GLULAM BEAMS & POSTS STAINED, BRODA, SEMI TRANSPARENT BUTTERNUT #251</p> <p>12 PRE-STAINED & PRE-DRILLED 2"x VERTICAL CEDAR SCREEN AT STAIRWELLS. STAINED TO MATCH GLULAMS</p> <p>13 ANODISED ALUM GARAGE ROLLER DOOR</p> <p>14 STUCCO FINISH AT ELEVATOR COOLY GRAY - CONCRETE LOOK</p>
---------------------------------------------------------------------------------------------------------------------------------------------------------------------------------------------------------------------------------------------------------------------------------------------------------------------------------------------------------------------------------------------------------------------------------------------------------------------------------------------------------------------------------------------------------------------------------------------------	--------------------------------------------------------------------------------------------------------------------------------------------------------------------------------------------------------------------------------------------------------------------------------------------------------------------------------------------------------------------------------------------------------------------------------------------------------

- EXTERIOR FINISHES LEGEND**
TO BE READ IN CONJUNCTION WITH DETAILS
- 1 HORIZONTAL HARDIE LAP SIDING, COLOUR: RICH ESPRESSO
 - 2 VERTICAL HARDIEBOARD & CEDAR BATTEN SIDING, COLOUR: TUSCAN GOLD
 - 3 HARDIE PANEL, COLOUR: NIGHT GREY
 - 4 VINYL NAIL ON FLANGE, DOUBLE GLAZED WINDOWS INSULATED FIBREGLASS & METAL EXTERIOR DOORS
 - 5 CLEAR GLASS GUARD RAIL
 - 6 24 GAUGE PRE-FINISHED METAL FASCIA CASCADIA CHARCOAL SMP
 - 7 HARDIE SOFFITING, WOODGRAIN CEDAR TONE
 - 8 BASALT STONE, ROUGH EDGE, c/w CONCRETE CAP
 - 9 SBS TORCH-ON ROOFING MEMBRANE
 - 10 EXPOSED CONCRETE
 - 11 GLULAM BEAMS STAINED BRODA, SEMI-TRANSPARENT, BUTTERNUT #251
 - 12 POSTS: STAINED TO MATCH GLULAMS
 - 13 PRE-STAINED & PRE-DRILLED 2"x VERTICAL CEDAR SCREEN AT STAIRWELLS WITH 2.2" GAP, STAINED TO MATCH GLULAMS
 - 14 METAL GARAGE ROLLER DOOR - ANODIZED ALUMINIUM
 - 15 STUCCO FINISH - COOL GREY COLOUR (CONCRETE-LIKE)

No.	Revision:	Date:	No.	Revision:	Date:
DP		21 SEPT 2018			
DESIGN PANEL		22 NOV 2018			
DP RESUBMISSION		25 MAY 2021			

Exterior Finishes - Material Board

Hammond Bay Residences

6010 Hammond Bay Road, Nanaimo, BC

Sealed:	This document contains copyrighted material belonging to Murdoch-Company Architecture + Planning Ltd. Any unauthorized use, disclosure, or duplication of any information contained herein may result in liability under applicable laws.	Drawn By:	Scale:
	Architecture + Planning Ltd. P.O. Box 1294 Westport, B.C. V8M 1S0 Ph: 250-692-7441 Fax: 250-693-8103 e-mail: murdoch@murdoch.net	BM/TT	1/2" : 1'-0" imp
		Project No:	Sheet No:
		17.19	A-9.1

RECEIVED
DP1238
1821 MAY 25
Curran Planning