

ATTACHMENT H LANDSCAPE PLAN AND DETAILS



CLIENT

stuartolson
people enabling progress

COPYRIGHT
The drawings have been prepared solely for the stated use and are not to be reproduced or distributed for any purpose other than as authorized by Stuart Olson. Any reuse, modification, or distribution of these drawings without the written consent of Stuart Olson is prohibited. Stuart Olson and its affiliates are not responsible for any reliance on the information and drawings shown in the drawings. This drawing shall be void if it is not printed on the same paper as the drawings from which it was prepared.

ISSUES

No.	DESCRIPTION	DATE
1	Issued for Development Plans	20210203
2	Issued for DP Response	20210707

CONSULTANTS

P+A
Landscape Architecture
Site Planning

8, 9th Ferry & Associates Inc.
112 East Broadway
Vancouver, BC V5T 1V9
1 604 738 4118
1 604 738 4116
www.perryandassociates.ca

PRIME CONSULTANT

IBI GROUP
ARCHITECTS (CANADA) INC.
705-1088 West Fraser Street
Vancouver, BC V6E 4B1 Canada
tel: 604 683 8777 fax: 604 683 0442
ibi@group.com

PROJECT
NANAIMO CORRECTIONAL CENTRE REPLACEMENT
3945 BIGGS ROAD
NANAIMO, BC
V8R 5N3, CANADA

PROJECT NO: 19-080	SCALE: 1:750
DRAWN BY: JB	CHECKED BY: MP
PROJECT MGR: JP	APPROVED BY: MP

SHEET TITLE
Landscape
Site Plan

SHEET NUMBER L0.0	ISSUE
----------------------	-------

RECEIVED
DP1221
2021-JUL-13
CLIMATE PLANNING

2021-07-08

LEGEND

- Pedestrian Circulation
- Vehicular Circulation

BRANNAN LAKE



CLIENT

stuartolson
people enabling progress

COPYRIGHT
The drawings herein prepared solely for the stated use. They are not to be reproduced or distributed for any purpose other than authorized by Stuart Olson. No liability is assumed for any errors or omissions. Copyright © 2021 Stuart Olson. All rights reserved. No part of this drawing may be reproduced or transmitted in any form or by any means, electronic or mechanical, including photocopying, recording, or by any information storage and retrieval system, without the prior written permission of Stuart Olson.

88 Group Architecture (Canada) Inc.
111 Vanover Street, Vancouver, BC V6C 2T5

ISSUES	DESCRIPTION	DATE
1	Issued for Development Permit	20210203
2	Issued for DP Response	20210707

CONSULTANTS

P+A
Landscape Architecture
Site Planning

8, 9th Ferry & Associates Inc.
112 East Broadway
Vancouver, BC V5T 1V9
T 602 738 4118
F 602 738 4116
www.perryandassociates.ca

SEAL

PRIME CONSULTANT

IBI GROUP
ARCHITECTS (CANADA) INC.
705-1008 West Fraser Street
Vancouver, BC V6E 4B1 Canada
tel: 604 683 8787 or 804 683 0462
ibi@group.com

PROJECT
NANAIMO CORRECTIONAL CENTRE REPLACEMENT
3945 BIGGS ROAD
NANAIMO, BC
V9R 5N3, CANADA

PROJECT NO: 19-080	SCALE: 1:750
DRAWN BY: JB	CHECKED BY: MP
PROJECT MGR: JP	APPROVED BY: MP

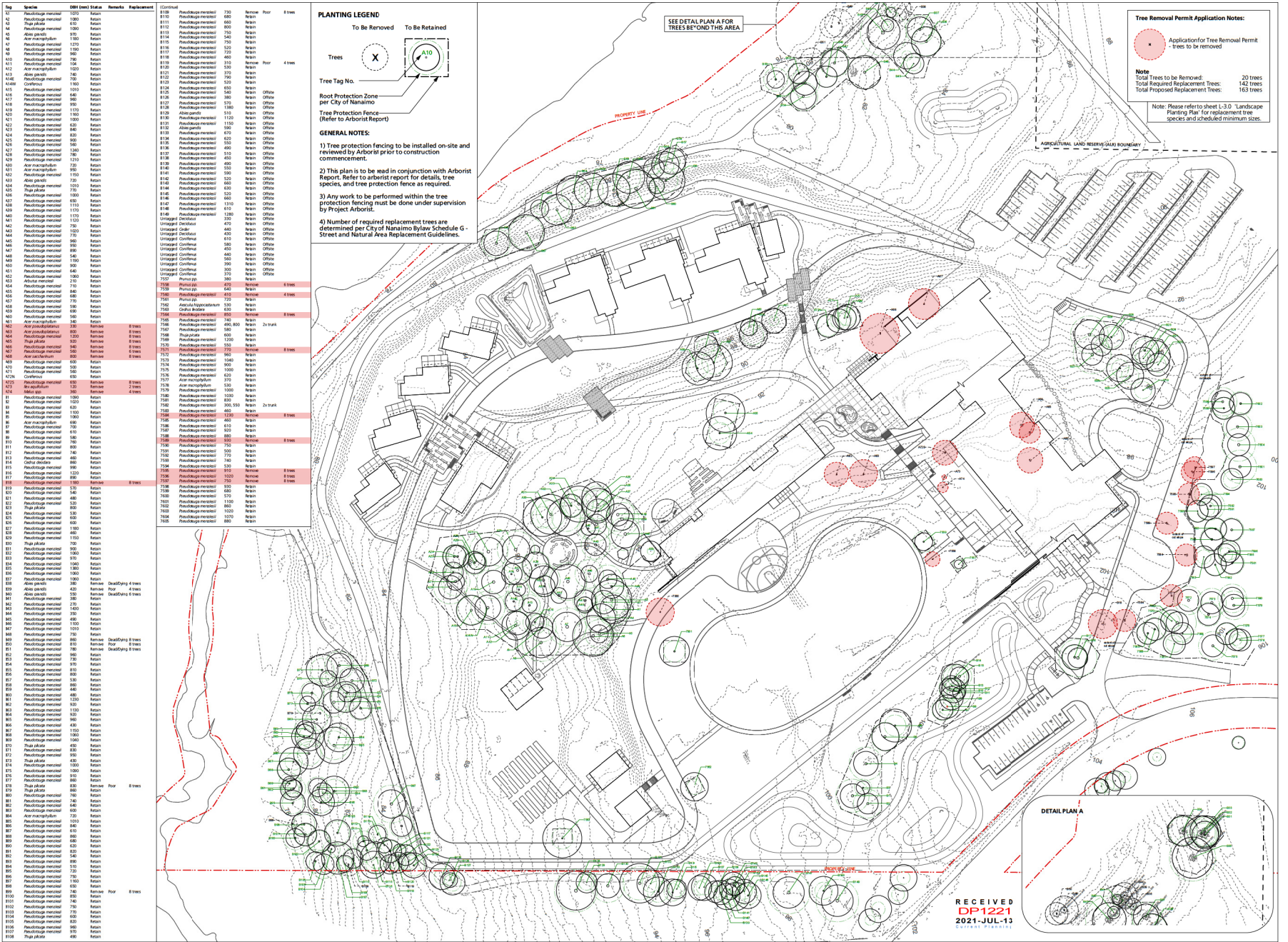
SHEET TITLE
Landscape Site Circulation Diagram

SHEET NUMBER L0.1	ISSUE
-----------------------------	-------

RECEIVED
DP1221
2021-JUL-13
CURRENT PLANNING

Site Circulation Diagram
Scale: 1:750

DATE PLOTTED: 2021-07-08



Tag	Species	DBH (mm)	Stem	Remarks	Replacement	Quantity	Species	DBH (mm)	Stem	Remarks
41	Pinus strobus	100	Retain		Pinus strobus	730	Pinus strobus	730	Retain	8 trees
42	Pinus strobus	100	Retain		Pinus strobus	660	Pinus strobus	660	Retain	
43	Pinus strobus	100	Retain		Pinus strobus	660	Pinus strobus	660	Retain	
44	Pinus strobus	100	Retain		Pinus strobus	750	Pinus strobus	750	Retain	
45	Pinus strobus	100	Retain		Pinus strobus	750	Pinus strobus	750	Retain	
46	Pinus strobus	100	Retain		Pinus strobus	750	Pinus strobus	750	Retain	
47	Pinus strobus	100	Retain		Pinus strobus	750	Pinus strobus	750	Retain	
48	Pinus strobus	100	Retain		Pinus strobus	750	Pinus strobus	750	Retain	
49	Pinus strobus	100	Retain		Pinus strobus	750	Pinus strobus	750	Retain	
50	Pinus strobus	100	Retain		Pinus strobus	750	Pinus strobus	750	Retain	
51	Pinus strobus	100	Retain		Pinus strobus	750	Pinus strobus	750	Retain	
52	Pinus strobus	100	Retain		Pinus strobus	750	Pinus strobus	750	Retain	
53	Pinus strobus	100	Retain		Pinus strobus	750	Pinus strobus	750	Retain	
54	Pinus strobus	100	Retain		Pinus strobus	750	Pinus strobus	750	Retain	
55	Pinus strobus	100	Retain		Pinus strobus	750	Pinus strobus	750	Retain	
56	Pinus strobus	100	Retain		Pinus strobus	750	Pinus strobus	750	Retain	
57	Pinus strobus	100	Retain		Pinus strobus	750	Pinus strobus	750	Retain	
58	Pinus strobus	100	Retain		Pinus strobus	750	Pinus strobus	750	Retain	
59	Pinus strobus	100	Retain		Pinus strobus	750	Pinus strobus	750	Retain	
60	Pinus strobus	100	Retain		Pinus strobus	750	Pinus strobus	750	Retain	
61	Pinus strobus	100	Retain		Pinus strobus	750	Pinus strobus	750	Retain	
62	Pinus strobus	100	Retain		Pinus strobus	750	Pinus strobus	750	Retain	
63	Pinus strobus	100	Retain		Pinus strobus	750	Pinus strobus	750	Retain	
64	Pinus strobus	100	Retain		Pinus strobus	750	Pinus strobus	750	Retain	
65	Pinus strobus	100	Retain		Pinus strobus	750	Pinus strobus	750	Retain	
66	Pinus strobus	100	Retain		Pinus strobus	750	Pinus strobus	750	Retain	
67	Pinus strobus	100	Retain		Pinus strobus	750	Pinus strobus	750	Retain	
68	Pinus strobus	100	Retain		Pinus strobus	750	Pinus strobus	750	Retain	
69	Pinus strobus	100	Retain		Pinus strobus	750	Pinus strobus	750	Retain	
70	Pinus strobus	100	Retain		Pinus strobus	750	Pinus strobus	750	Retain	
71	Pinus strobus	100	Retain		Pinus strobus	750	Pinus strobus	750	Retain	
72	Pinus strobus	100	Retain		Pinus strobus	750	Pinus strobus	750	Retain	
73	Pinus strobus	100	Retain		Pinus strobus	750	Pinus strobus	750	Retain	
74	Pinus strobus	100	Retain		Pinus strobus	750	Pinus strobus	750	Retain	
75	Pinus strobus	100	Retain		Pinus strobus	750	Pinus strobus	750	Retain	
76	Pinus strobus	100	Retain		Pinus strobus	750	Pinus strobus	750	Retain	
77	Pinus strobus	100	Retain		Pinus strobus	750	Pinus strobus	750	Retain	
78	Pinus strobus	100	Retain		Pinus strobus	750	Pinus strobus	750	Retain	
79	Pinus strobus	100	Retain		Pinus strobus	750	Pinus strobus	750	Retain	
80	Pinus strobus	100	Retain		Pinus strobus	750	Pinus strobus	750	Retain	
81	Pinus strobus	100	Retain		Pinus strobus	750	Pinus strobus	750	Retain	
82	Pinus strobus	100	Retain		Pinus strobus	750	Pinus strobus	750	Retain	
83	Pinus strobus	100	Retain		Pinus strobus	750	Pinus strobus	750	Retain	
84	Pinus strobus	100	Retain		Pinus strobus	750	Pinus strobus	750	Retain	
85	Pinus strobus	100	Retain		Pinus strobus	750	Pinus strobus	750	Retain	
86	Pinus strobus	100	Retain		Pinus strobus	750	Pinus strobus	750	Retain	
87	Pinus strobus	100	Retain		Pinus strobus	750	Pinus strobus	750	Retain	
88	Pinus strobus	100	Retain		Pinus strobus	750	Pinus strobus	750	Retain	
89	Pinus strobus	100	Retain		Pinus strobus	750	Pinus strobus	750	Retain	
90	Pinus strobus	100	Retain		Pinus strobus	750	Pinus strobus	750	Retain	
91	Pinus strobus	100	Retain		Pinus strobus	750	Pinus strobus	750	Retain	
92	Pinus strobus	100	Retain		Pinus strobus	750	Pinus strobus	750	Retain	
93	Pinus strobus	100	Retain		Pinus strobus	750	Pinus strobus	750	Retain	
94	Pinus strobus	100	Retain		Pinus strobus	750	Pinus strobus	750	Retain	
95	Pinus strobus	100	Retain		Pinus strobus	750	Pinus strobus	750	Retain	
96	Pinus strobus	100	Retain		Pinus strobus	750	Pinus strobus	750	Retain	
97	Pinus strobus	100	Retain		Pinus strobus	750	Pinus strobus	750	Retain	
98	Pinus strobus	100	Retain		Pinus strobus	750	Pinus strobus	750	Retain	
99	Pinus strobus	100	Retain		Pinus strobus	750	Pinus strobus	750	Retain	
100	Pinus strobus	100	Retain		Pinus strobus	750	Pinus strobus	750	Retain	

PLANTING LEGEND

To Be Removed: X
To Be Retained: Circle with 'A10'

Tree Tag No. [Symbol]

Root Protection Zone per City of Nanaimo

Tree Protection Fence (Refer to Arborist Report)

GENERAL NOTES:

- 1) Tree protection fencing to be installed on-site and reviewed by Arborist prior to construction commencement.
- 2) This plan is to be read in conjunction with Arborist Report. Refer to arborist report for details, tree species, and tree protection fence as required.
- 3) Any work to be performed within the tree protection fencing must be done under supervision by Project Arborist.
- 4) Number of required replacement trees are determined per City of Nanaimo Bylaw, Schedule G - Street and Natural Area Replacement Guidelines.

Tree Removal Permit Application Notes:

Application for Tree Removal Permit - trees to be removed

Note: Total Trees to be Removed: 20 trees
Total Required Replacement Trees: 142 trees
Total Proposed Replacement Trees: 163 trees

Note: Please refer to sheet L-3.0 Landscape Planting Plan for replacement tree species and scheduled minimum sizes.

CLIENT

Infrastructure BC
BC TELUS
stuartolson
people making progress

COPYRIGHT

All rights reserved. This document is the property of Stuart Olson & Associates Inc. No part of this document may be reproduced, stored in a retrieval system, or transmitted in any form or by any means, electronic, mechanical, photocopying, recording, or by any information storage and retrieval system, without the prior written permission of Stuart Olson & Associates Inc. This document is the property of Stuart Olson & Associates Inc. and is not to be used for any other project without the prior written permission of Stuart Olson & Associates Inc.

ISSUES

No.	DESCRIPTION	DATE
1	Issued for Development Permit	20210203
2	Issued for DP Response	20210707

CONSULTANTS

P+A
Landscape Architecture
Site Planning
112 East Broadway
VANCOUVER, BC V5T 1V9
T 604 738 4118
F 604 738 4116
www.perryandassociates.ca

PRIME CONSULTANT

IBI GROUP
ARCHITECTS (CANADA) INC.
705 - 1055 West Fraser Street
Vancouver, BC V6E 4B1 Canada
Tel: 604 683 8797 or 604 683 0462
ibi@group.com

PROJECT

NANAIMO CORRECTIONAL CENTRE REPLACEMENT
3945 BIGGS ROAD
NANAIMO, BC
V9R 5N5, CANADA

PROJECT NO: 19-080
SCALE: 1:750










DRAWN BY: JB
CHECKED BY: MP

PROJECT MGR: JP
APPROVED BY: MP

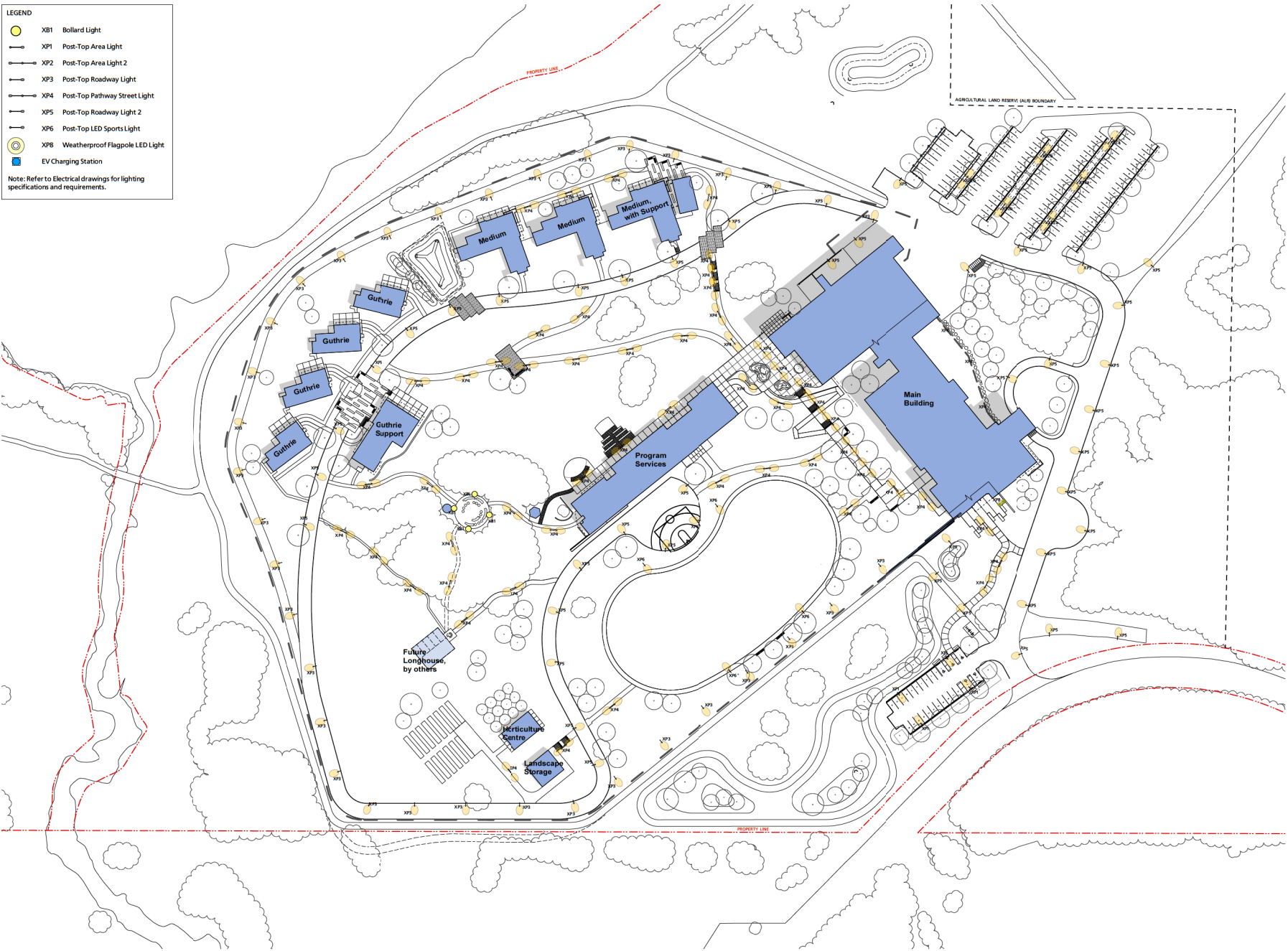
SHEET TITLE
Tree Management Plan

SHEET NUMBER L0.2
ISSUE 2021-07-08


LEGEND

-  XB1 Bollard Light
-  XP1 Post-Top Area Light
-  XP2 Post-Top Area Light 2
-  XP3 Post-Top Roadway Light
-  XP4 Post-Top Pathway Street Light
-  XP5 Post-Top Roadway Light 2
-  XP6 Post-Top LED Sports Light
-  XP8 Weatherproof Flagpole LED Light
-  EV Charging Station

Note: Refer to Electrical drawings for lighting specifications and requirements.



CLIENT



stuartolson
people enabling progress

COPYRIGHT
The drawings have been prepared solely for the stated use and are not to be reproduced or distributed for any purpose other than authorized by Stuart Olson. Any reproduction of these drawings without the express written consent of Stuart Olson, Corporation, shall be considered an infringement of intellectual property rights. Stuart Olson and its affiliates do not warrant the accuracy or completeness of the drawings shown in the drawings. The drawings shall be modified by Stuart Olson to provide information not provided by the client.

ISSUES

No.	DESCRIPTION	DATE
1	Issued for Development Permit	2021/02/03
2	Issued for DP Response	2021/07/07

CONSULTANTS

P+A
Landscape Architecture
Site Planning

R. Kim Perry & Associates Inc.
112 East Broadway
Vancouver, BC V5T 1V9
T 604 738 4118
F 604 738 4116
www.perryandassociates.ca

RECEIVED
DP1221
2021-JUL-13
Landscape Architecture

SEAL

PRIME CONSULTANT

IBI GROUP
ARCHITECTS (CANADA) INC.
705 West Pender Street
Vancouver, BC V6E 4B1 Canada
Tel: 604.683.0797 Fax: 604.683.0842
ibi@ibi.com

PROJECT
NANAIMO CORRECTIONAL CENTRE REPLACEMENT
3945 BIGGS ROAD
NANAIMO, BC
V9R 5N3, CANADA

PROJECT NO: 19-080	SCALE: 1:750
DRAWN BY: JS	CHECKED BY: MP
PROJECT MGR: JP	APPROVED BY: MP

SHEET TITLE
Landscape
Site Lighting Plan

SHEET NUMBER L2.0	ISSUE 2021-07-08
-----------------------------	----------------------------

PLANTING LEGEND

A	Entry Plaza
B	Commons
C	Commons Plaza
D	Guthrie Neighbourhood
E	Wetland
F	Berm
G	Healing Garden
H	Guthrie/Medium Building Planters
I	Hydroseed <i>Area disturbed by construction to be hydroseeded</i>
J	Habitat Planting <i>Area disturbed by Road Construction. Planting per Environmental Consultant</i>
K	Parking Lot Planting <i>(Between Visitor Parking and Biggs Road)</i>

PLANTING PALETTE

A. ENTRY PLAZA

Botanical Name	Common Name	Size and Spacing
<i>Berberis thunbergii</i> 'Rose Glow'	Japanese Barberry	#1 Pot at 1m
<i>Calamagrostis x acutiflora</i>	Karl Foerster Grass	#1 Pot at 5m
<i>Carex oshimensis</i> 'Evergold'	Japanese Sedge	#1 Pot at 45m
<i>Carex stolonifera</i> or <i>sericea</i>	Red-Osier Dogwood	#1 Pot at 45m
<i>Lonicera nitida</i>	Box Honeysuckle	#1 Pot at 5m
<i>Mahonia aquifolium</i>	Creeeping Oregon Grape	#1 Pot at 5m
<i>Mahonia repens</i>	Mountain Pine	#1 Pot at 45m
<i>Pennisetum alopecuroides</i>	Fountain Grass	#1 Pot at 5m
<i>Polystichum murinum</i>	Sword Fern	#1 Pot at 75m
<i>Ribes sanguineum</i>	Red-Flowering Currant	#1 Pot at 1m
<i>Sarcococca rusifolia</i>	Fragrant Sweet Box	#1 Pot at 5m

B. COMMONS

Botanical Name	Common Name	Size and Spacing
<i>Berberis thunbergii</i> 'Rose Glow'	Japanese Barberry	#1 Pot at 1m
<i>Calamagrostis x acutiflora</i>	Karl Foerster Grass	#1 Pot at 5m
<i>Carex oshimensis</i> 'Evergold'	Japanese Sedge	#1 Pot at 45m
<i>Lonicera nitida</i>	Box Honeysuckle	#1 Pot at 5m
<i>Pennisetum alopecuroides</i>	Fountain Grass	#1 Pot at 5m
<i>Potentilla fruticosa</i>	Shrubby Cinquefoil	#1 Pot at 75m

C. COMMONS PLAZA

Botanical Name	Common Name	Size and Spacing
<i>Berberis thunbergii</i> 'Rose Glow'	Japanese Barberry	#1 Pot at 1m
<i>Calamagrostis x acutiflora</i>	Karl Foerster Grass	#1 Pot at 5m
<i>Carex oshimensis</i> 'Evergold'	Japanese Sedge	#1 Pot at 45m
<i>Ceanothus thyrsiflorus</i> 'Victoria'	Box Honeysuckle	#1 Pot at 5m
<i>Lonicera nitida</i>	Box Honeysuckle	#1 Pot at 5m
<i>Pennisetum alopecuroides</i>	Fountain Grass	#1 Pot at 5m
<i>Physocarpus opulifolius</i>	Ninebark	#1 Pot at 1m
<i>Pinus mugo</i>	Mountain Pine	#1 Pot at 5m
<i>Potentilla fruticosa</i>	Shrubby Cinquefoil	#1 Pot at 75m
<i>Prunus laurocerasus</i> 'Otto Luyken'	English Laurel	#1 Pot at 1m
<i>Ribes sanguineum</i>	Red-Flowering Currant	#1 Pot at 1m
<i>Spiraea japonica</i> 'Gold Mound'	Japanese Spirea	#1 Pot at 75m
<i>Symphoricarpos albus</i>	Snowberry	#1 Pot at 1m
<i>Vericumium Ovatum</i>	Evergreen Huckleberry	#1 Pot at 1m

D. GUTHRIE NEIGHBOURHOOD

Botanical Name	Common Name	Size and Spacing
<i>Arctostaphylos uva-ursi</i>	Kinnikinnick	#1 Pot at 45m
<i>Berberis thunbergii</i> 'Rose Glow'	Japanese Barberry	#1 Pot at 1m
<i>Lonicera nitida</i>	Box Honeysuckle	#1 Pot at 5m
<i>Philadelphus lewisii</i>	Mock Orange	#1 Pot at 1.5m
<i>Polystichum murinum</i>	Sword Fern	#1 Pot at 75m
<i>Potentilla fruticosa</i>	Shrubby Cinquefoil	#1 Pot at 75m
<i>Prunus laurocerasus</i> 'Otto Luyken'	English Laurel	#1 Pot at 1m
<i>Spiraea japonica</i> 'Gold Mound'	Japanese Spirea	#1 Pot at 75m

E. WETLAND

Botanical Name	Common Name	Size
<i>Carex oshimensis</i>	Slough Sedge	Plugs
<i>Cornus stolonifera</i> or <i>sericea</i>	Red-Osier Dogwood	3m live-stakes
<i>Juncus effusus</i>	Common Rush	Plugs
<i>Malus fusca</i>	Japanese Crabapple	#5 Pot
<i>Myrica gale</i>	Sweetgale	#1 Pot
<i>Rhamnus purshiana</i>	Cattail	#1 Pot
<i>Rubus parviflorus</i>	Stink Willow	3m live-stakes
<i>Salix cinerea</i>	Hardstem Bulrush	Plugs
<i>Scirpus acutus</i> or <i>laevis</i>	Hardstem Bulrush	Plugs
<i>Suaeda frutescens</i>	Cattail	Plugs

F. BERM

Botanical Name	Common Name	Size and Spacing
<i>Ammannia anifolia</i>	Saltation, Serviceberry	#3 Pot
<i>Arbutus menziesii</i>	Pacific Madrone	#3 Pot
<i>Arctostaphylos uva-ursi</i>	Kinnikinnick	#1 Pot at 45m
<i>Blechnum spicant</i>	Deer Fern	#1 Pot at 45m
<i>Cornus stolonifera</i> or <i>sericea</i>	Red-Osier Dogwood	#1 Pot at 1m
<i>Corylus cornuta</i>	Beaked Hazelnut	#5 Pot
<i>Crataegus douglasii</i>	Black Hawthorn	#3 Pot
<i>Pseudotsuga menziesii</i>	Douglas Fir	#5 Pot
<i>Juniperus horizontalis</i>	Queen Spruce	#3 Pot
<i>Philadelphus lewisii</i>	Mock Orange	#1 Pot at 1m
<i>Physocarpus opulifolius</i>	Pacific Ninebark	#5 Pot
<i>Pinus species</i>	To be confirmed	#5 Pot at 1m
<i>Ribes sanguineum</i>	Red-Flowering Currant	#1 Pot at 1m
<i>Rosa nutkana</i>	Nootka Rose	#1 Pot at 1m
<i>Sambucus canadensis</i>	Blue Elderberry	#1 Pot at 1m
<i>Symphoricarpos albus</i>	Snowberry	#1 Pot at 1m

G. HEALING GARDEN

To be planted by others, as part of the Indigenous and/or spiritual programming.

H. GUTHRIE / MEDIUM BUILDING PLANTERS

Planter areas to be planted by residents. Topsoil to be provided by the Contract.

I. HYDROSEED

Low maintenance mix (15% Quatro Sheep Fescue, 15% Eureka II Hard Fescue, 10% Chandler's Creeping Red Fescue, 20% Creeping Red Fescue, 20% Windward Creeping Fescue, 20% LS200 Perennial Ryegrass).

Seeding rate to be 1-4 lb per 1,000ft².

J. HABITAT PLANTING

Planting per Environmental Consultant.

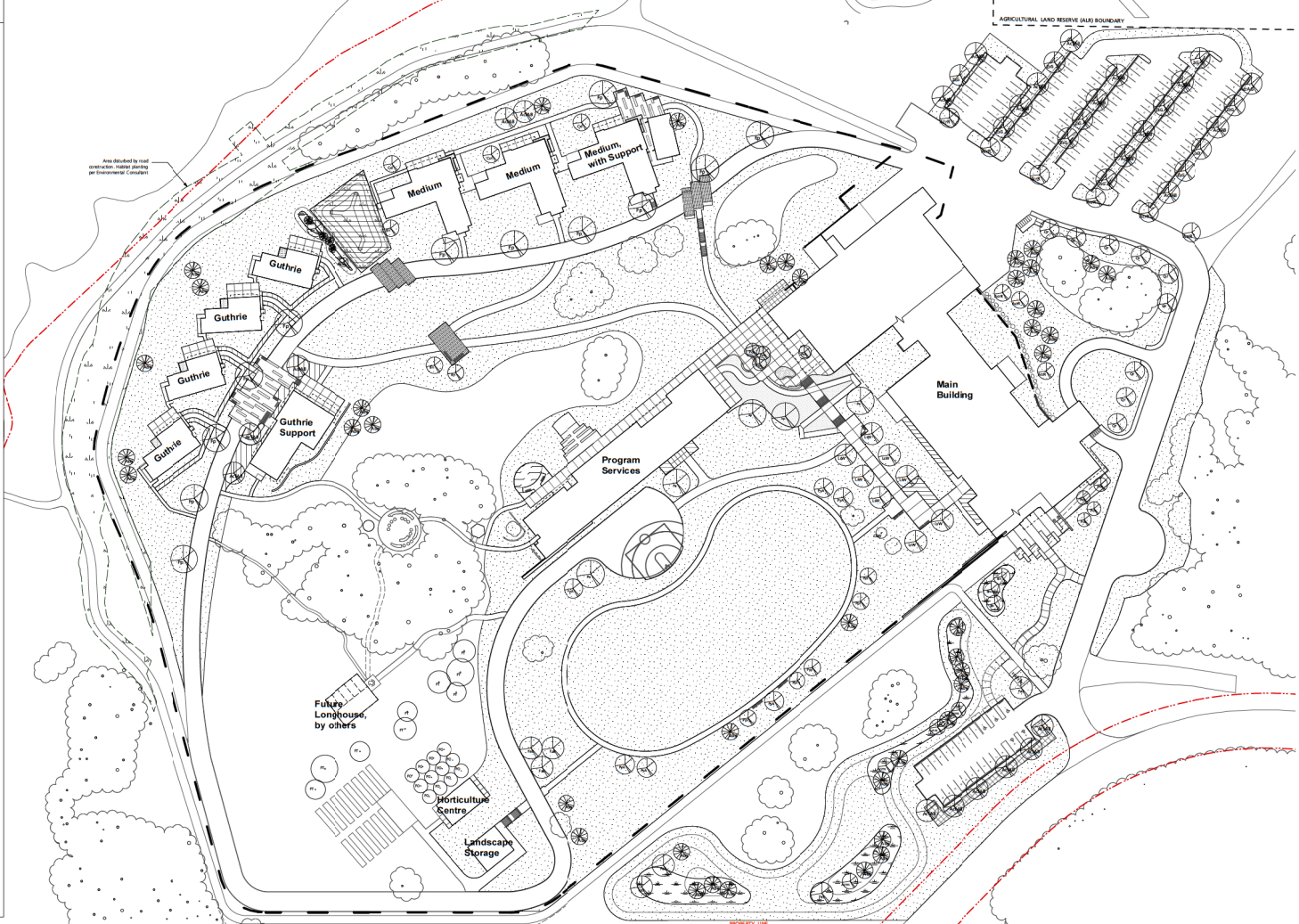
K. PARKING LOT PLANTING

Botanical Name	Common Name	Size and Spacing
<i>Berberis thunbergii</i> 'Rose Glow'	Japanese Barberry	#1 Pot at 1m
<i>Lonicera nitida</i>	Box Honeysuckle	#1 Pot at 5m
<i>Pennisetum alopecuroides</i>	Fountain Grass	#1 Pot at 5m
<i>Rosa nutkana</i>	Nootka Rose	#1 Pot at 1m

Tree Planting List

Symbol	Qty.	Botanical Name	Common Name	Scheduled Size	Remarks
Trees	41	<i>Abies grandis</i>	Grand Fir	20 ft	
Tree	4	<i>Acer macrophyllum</i>	Sitka Maple	6m cal. @ 8	
Tree	1	<i>Acer pseudoplatanus</i>	Sycamore Maple	6m cal. @ 8	
Tree	1	<i>Acer rubrum</i> 'Autumn Glory'	Swamp White Maple	6m cal. @ 8	
Tree	1	<i>Acer rubrum</i> 'Red Sunset'	Red Sunset Maple	6m cal. @ 8	
Tree	21	<i>Thuja occidentalis</i> 'Autumn Blue'	Blue Spruce	6m cal. @ 8	
Tree	1	<i>Amelanchier alabamica</i>	Saskatoon	2.5m tr. @ 8	WB, 1.8m Standard CWV 1x gallon bag per tree. To be selected by LA.
Tree	1	<i>Betula picea</i>	Beech	6m cal. @ 8	
CWV	1	<i>Cornus</i> 'Maiden White Wonder'	Eastern White Wonder Dogwood	6m cal. @ 8	
CU	2	<i>Cornus x hybrid</i>	Level Bush	6m cal. @ 8	
CU	1	<i>Fagus sylvatica</i>	London Plane	6m cal. @ 8	
CU	1	<i>Fraxino americana</i> 'Palmetto'	Green Ash	6m cal. @ 8	
CU	1	<i>Liquidambar styraciflua</i> 'Winged'	Wingedtree Sweet Gum	6m cal. @ 8	Single Trunk
CU	1	<i>Malva sylvestris</i> 'Apricot Belle Year'	French Mallow	6m cal. @ 8	Tree Form
CU	1	<i>Populus tremuloides</i>	Canada Poplar	6m cal. @ 8	
CU	1	<i>Prunus x emarginata</i> 'Akabane'	Japanese Cherry	6m cal. @ 8	'Native Habitat'
CU	1	<i>Prunus</i> 'muralis'	Quince	2.5m tr. @ 8	'Native Habitat'
CU	1	<i>Quercus</i>	Red Oak	6m cal. @ 8	
CU	11	<i>Salix vitrea</i> 'Green Wave'	Green Wave Japanese Weeping Willow	5m cal. @ 8	WB, 1.8m Standard CWV 1x gallon bag per tree. To be selected by LA.
CU	1	<i>Thuja occidentalis</i>	Blue Spruce	6m cal. @ 8	
Tree	1	<i>Future tree selection associated with future longhouse, to be planted in conjunction with future longhouse construction.</i>			

Note: Root Barrier to be Deeproot Geotextile, 176mm thick x 490mm deep, 2.5 lb per tree



CLIENT

stuartolson
people creating progress

COPYRIGHT

100 percent copyright reserved by Stuart Olson & Associates Inc. No part of this document may be reproduced or transmitted in any form or by any means, electronic or mechanical, including photocopying, recording, or by any information storage and retrieval system, without the prior written permission of Stuart Olson & Associates Inc. All rights reserved. This document and its contents are confidential and intended solely for the use of the recipient. If you have received this document in error, please notify Stuart Olson & Associates Inc. immediately.

ISSUES

No.	DESCRIPTION	DATE
1	Issued for Development Plans	20210203
2	Issued for DP Response	20210707

CONSULTANTS

P+A
Landscape Architecture
Site Planning

8, 8th Ferry & Associates Inc.
112 East Broadway
VANCOUVER, BC V5T 1V9
T 604 738 4118
F 604 738 4116
www.perryandassociates.ca

RECEIVED
DP 1221
2021-JUL-13
2021 Planning

SEAL

PRIME CONSULTANT

IBI GROUP
ARCHITECTS (CANADA) INC.
705 West Pender Street
Vancouver, BC V6E 4B1 Canada
Tel: 604 683 0707 Fax: 604 683 0442
ibi@ibi.com

PROJECT

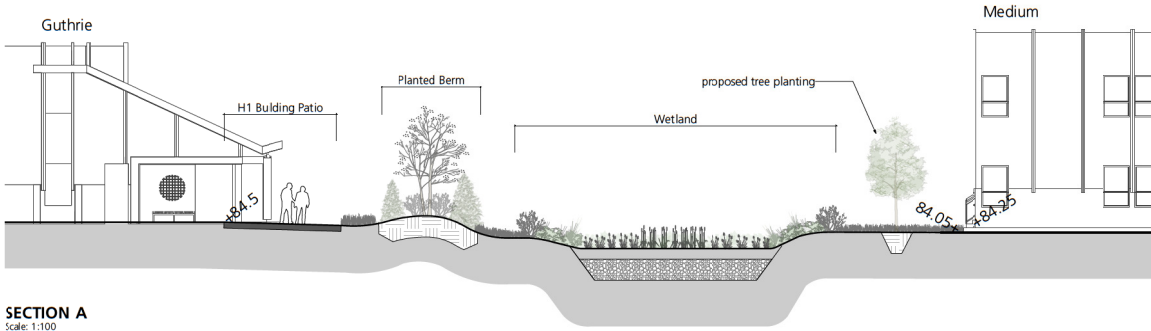
NANAIMO CORRECTIONAL CENTRE REPLACEMENT
3945 BIGGS ROAD
NANAIMO, BC
V9R 5N5, CANADA

PROJECT NO: 19-080	SCALE: 1:750
DRAWN BY: JB	CHECKED BY: MP
PROJECT MGR: JP	APPROVED BY: MP

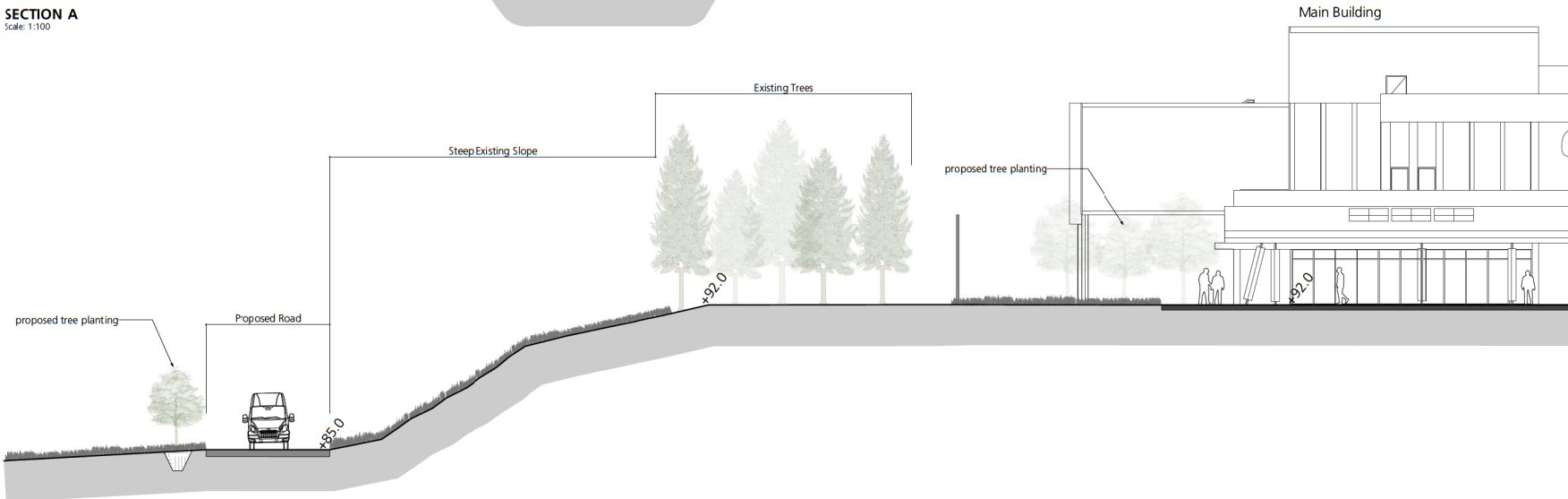
SHEET TITLE
Landscape
Planting Plan

SHEET NUMBER
L3.0

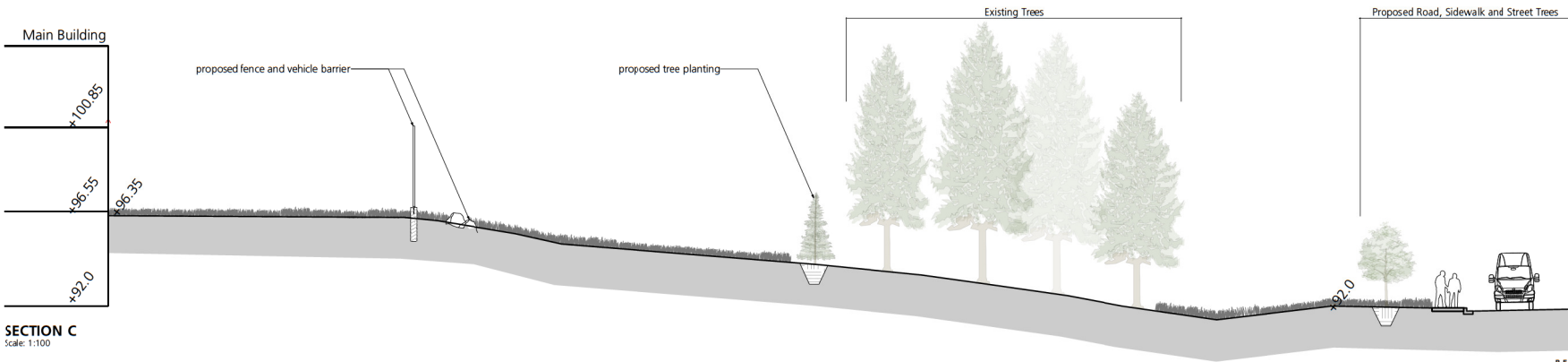
ISSUE
2021-07-08



SECTION A
Scale: 1:100



SECTION B
Scale: 1:100



SECTION C
Scale: 1:100

CLIENT

COPYRIGHT
The drawings have been prepared solely for the stated use. They are not to be used for any other purpose without the written consent of the author. The author disclaims any liability for any errors or omissions. The author is not responsible for any consequences of any use of the drawings other than the intended use. The drawings shall be used only for the purposes stated in the contract documents. © 2021 IBI Group Inc. All rights reserved.

ISSUES	DESCRIPTION	DATE
1	Issued for Technical Submission	2020/05/05
2	Financial Submission 2	2020/10/15
3	Issued for Development Permit	2021/02/03

CONSULTANTS
P+A
Landscape Architecture
Site Planning
R. Kim Perry & Associates Inc.
112 East Broadway
Vancouver, BC V5T 1V9
T 604 738 4118
F 604 738 4116
www.perryandassociates.ca

SEAL

PRIME CONSULTANT
IBI GROUP
ARCHITECTS (CANADA) INC.
705-1028 West Pender Street
Vancouver, BC V6E 4B1 Canada
Tel: 604 693 3797 Fax: 604 693 0462
ibi@ibi.com

PROJECT
NANAIMO CORRECTIONAL CENTRE REPLACEMENT
3945 BIGGS ROAD
NANAIMO, BC
V9R 5N3, CANADA

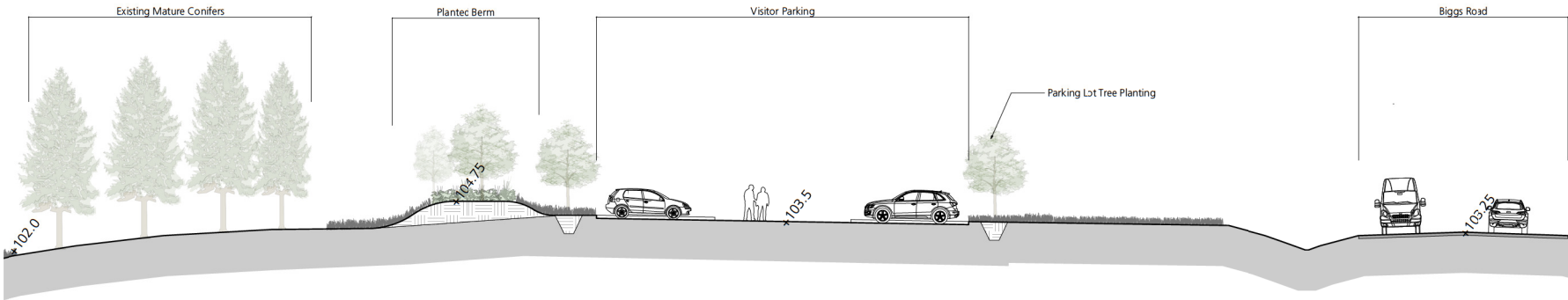
PROJECT NO: 19-080	SCALE: As Shown
DRAWN BY: JP	CHECKED BY: MP
PROJECT MGR: JP	APPROVED BY: MP

SHEET TITLE
Illustrative
Landscape Sections

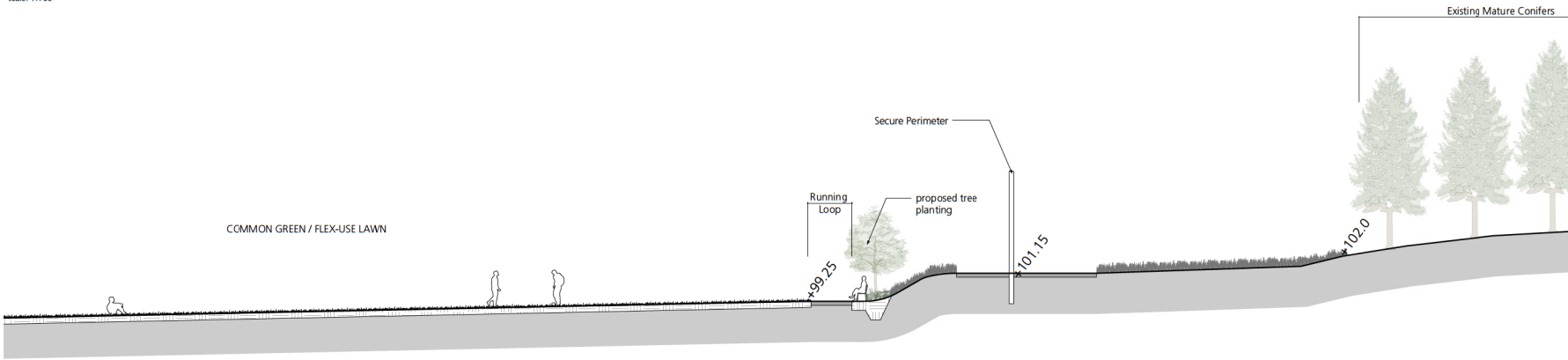
SHEET NUMBER L4.0	ISSUE
-----------------------------	-------

RECEIVED
DP 122 +
2021 FEB 03
Current Planning

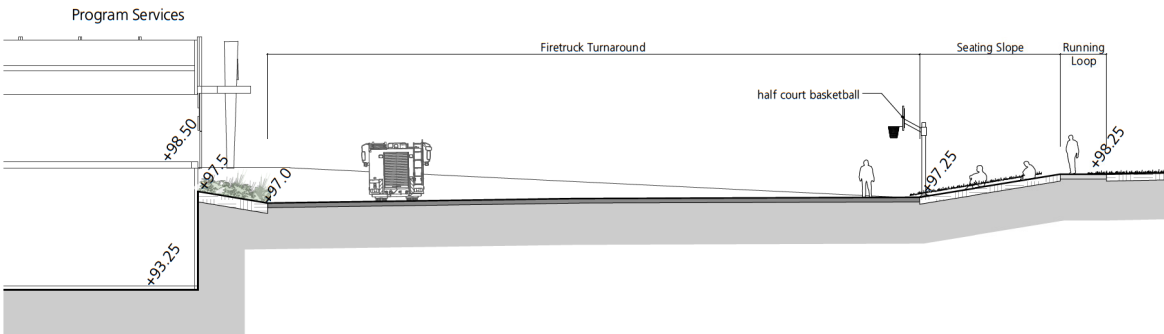
IBI GROUP



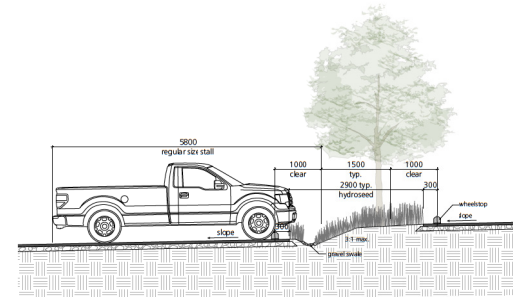
SECTION D
Scale: 1:100



SECTION D (cont.)
Scale: 1:100



SECTION E
Scale: 1:100

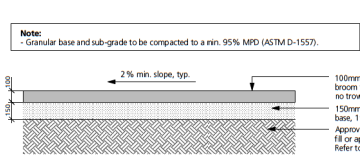


SECTION F
Scale: 1:50

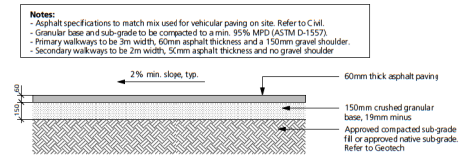
CLIENT													
<p>COPYRIGHT The drawings have been prepared solely for the intended use that any reproduction or distribution for any purpose other than authorized by IB Group is prohibited. Any reuse or distribution of these drawings without the written consent of IB Group is prohibited. IB Group shall be held liable for any damages from the reproduction and distribution of these drawings. This drawing shall be void if not signed by a professional in the province of British Columbia.</p> <p>IB Group Architecture (Canada) Inc. 111 number 4th St Group 4 Vancouver</p>													
<p>ISSUES</p> <table border="1"> <thead> <tr> <th>No.</th> <th>DESCRIPTION</th> <th>DATE</th> </tr> </thead> <tbody> <tr> <td>1</td> <td>Issued for Technical Submission</td> <td>2020/09/05</td> </tr> <tr> <td>2</td> <td>Financial Submission 2</td> <td>2020/10/15</td> </tr> <tr> <td>3</td> <td>Issued for Development Permit</td> <td>2021/02/03</td> </tr> </tbody> </table>		No.	DESCRIPTION	DATE	1	Issued for Technical Submission	2020/09/05	2	Financial Submission 2	2020/10/15	3	Issued for Development Permit	2021/02/03
No.	DESCRIPTION	DATE											
1	Issued for Technical Submission	2020/09/05											
2	Financial Submission 2	2020/10/15											
3	Issued for Development Permit	2021/02/03											
<p>CONSULTANTS</p> <table border="1"> <tr> <td> <p>P+A Landscape Architecture Site Planning</p> </td> <td> <p>R. Kim Perry & Associates Inc. 112 East Broadway Vancouver, BC V5T 1V9 T 604 738 4118 F 604 738 4116 www.perryandassociates.ca</p> </td> </tr> </table>		<p>P+A Landscape Architecture Site Planning</p>	<p>R. Kim Perry & Associates Inc. 112 East Broadway Vancouver, BC V5T 1V9 T 604 738 4118 F 604 738 4116 www.perryandassociates.ca</p>										
<p>P+A Landscape Architecture Site Planning</p>	<p>R. Kim Perry & Associates Inc. 112 East Broadway Vancouver, BC V5T 1V9 T 604 738 4118 F 604 738 4116 www.perryandassociates.ca</p>												
SEAL													
<p>PRIME CONSULTANT</p> <table border="1"> <tr> <td> <p>IBI GROUP ARCHITECTS (CANADA) INC. 705-108 West Pender Street Vancouver, BC V6E 4B1 Canada Tel: 604 683 8797 Fax: 604 683 0462 ibigroup.com</p> </td> </tr> </table>		<p>IBI GROUP ARCHITECTS (CANADA) INC. 705-108 West Pender Street Vancouver, BC V6E 4B1 Canada Tel: 604 683 8797 Fax: 604 683 0462 ibigroup.com</p>											
<p>IBI GROUP ARCHITECTS (CANADA) INC. 705-108 West Pender Street Vancouver, BC V6E 4B1 Canada Tel: 604 683 8797 Fax: 604 683 0462 ibigroup.com</p>													
<p>PROJECT NANAIMO CORRECTIONAL CENTRE REPLACEMENT 3945 BIGGS ROAD NANAIMO, BC V9R 5N5, CANADA</p>													
<p>PROJECT NO: 19-080</p>	<p>SCALE: As Shown</p>												
<p>DRAWN BY: JP</p>	<p>CHECKED BY: MP</p>												
<p>PROJECT MGR: JP</p>	<p>APPROVED BY: MP</p>												
<p>SHEET TITLE Illustrative Landscape Sections</p>													
<p>SHEET NUMBER L4.1</p>	<p>ISSUE</p>												

RECEIVED
 D.P. 12.2.1
 2021-11-08-03
 Curran Planning

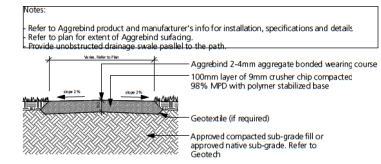
DRAWN BY: JP



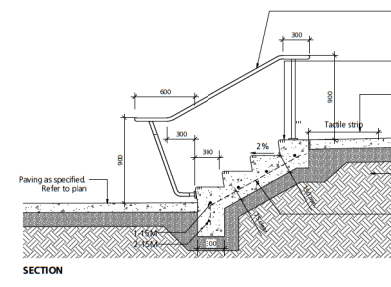
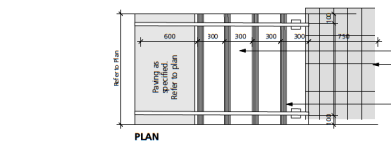
1 Pedestrian Concrete Paving
L5.0 1:20



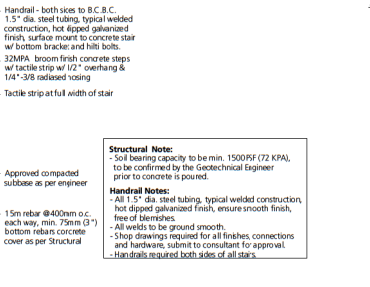
2 Pedestrian Asphalt Paving
L5.0 1:20



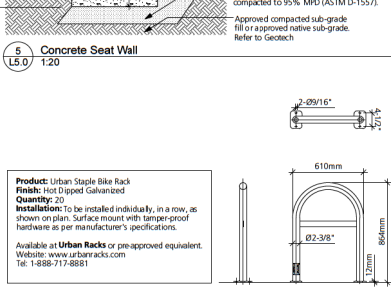
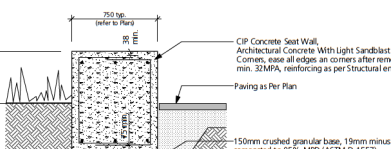
3 Pedestrian Granular Paving
L5.0 1:20



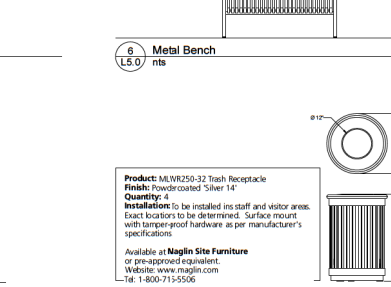
4 Cast Concrete Stairs
L5.0 1:25



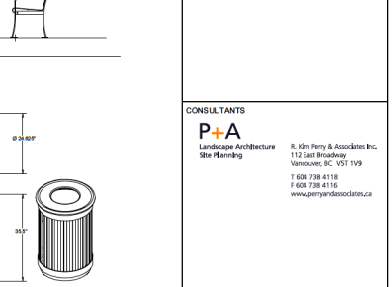
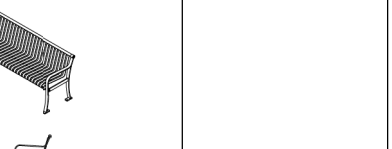
5 Concrete Seat Wall
L5.0 1:20



6 Metal Bench
L5.0 nts

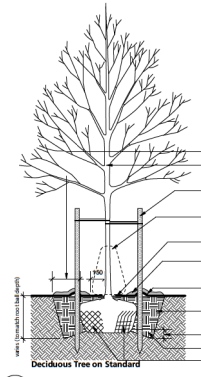


7 Bike Rack
L5.0 1:20

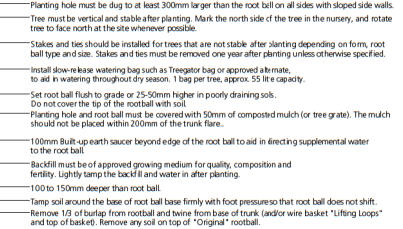


8 Garbage Receptacle
L5.0 nts

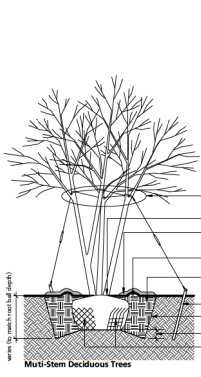
- Tree Planting Notes:**
- Do not cut leader.
 - Stake trees only upon the approval of the landscape architect. wrap tree trunks only upon the approval of the landscape architect.
 - Protect tree from danger during planting, ensure rootball is protected from sun, frost or desiccation.
 - Tree selection, handling, planting and maintenance must meet local/bcna standards, be in good health and condition without wounds, have normal form, and be free of disease and pests.
 - Site preparation must include provision for soil placement, replacement or enhancement to meet project specifications.
 - Planting holes must be free draining to the extent that rainwater and/or supplemental water does not accumulate and drown the roots. If necessary, the subgrade must be graded with positive slope and/or drainage services such as but not limited to percolation holes, french drains or drain pipes must be installed to suit.
 - Watering of the root ball must be undertaken immediately after planting and then for the first growing season so that the root ball is thoroughly wetted once per week (min/num).
 - The mulched root zone should be refreshed annually to replace the mulch. This area must be weeded by hand to avoid trunk and root damage from string trimmers or mowers.
 - The tree should be pruned to ansi a3000 standards after establishment and from time to time to train it for structure to conform to the form of the species and to respond to growing site constraints. All pruning must be undertaken by or performed under the direction of a qualified arborist certified by the international society of arboriculture and who demonstrates proficiency in pruning.



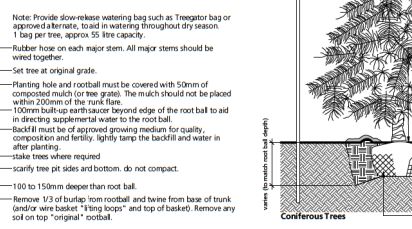
9 Deciduous Tree on Standard
L5.0 1:25



Multi-Stem Deciduous Trees



Coniferous Trees



Coniferous Trees

- Note: Provide slow-release watering bag such as Treegator bag or approved alternate, to aid in watering throughout dry season. 1 bag per tree, approx. 55 litre capacity.
- Tactile trunk to stake with tree ring as necessary.
 - Locate anchor stake 450mm away from tree trunk on side of prevailing wind. T-rail iron stake or acceptable wooden substitute. Anchor firmly.
 - Set root ball flush to grade or 25-50mm higher in poorly draining soils. Do not cover the top of the root ball with soil.
 - Planting hole and root ball must be covered with 50mm of composted mulch (or tree grade). The mulch should not be placed within 200mm of the trunk flare.
 - 100mm built-up earth saucer beyond edge of the root ball to aid in directing supplemental water to the root ball.
 - Backfill must be of approved growing medium for quality, composition and fertility. Lightly tamp the backfill and water in after planting.
 - Stake trees where required.
 - scarify tree pit sides and bottom. do not compact.
 - 100 to 150mm deeper than root ball.
 - Tamp soil around the base of root ball base firmly with foot pressure so that root ball does not shift.
 - Remove 1/3 of burlap from rootball and twine from base of trunk (and/or wire basket "lifting loops" and top of basket). Remove any soil on top "original" rootball.

RECEIVED
D P 12 21
2024-FEB-03
Current Planning

CLIENT		
COPYRIGHT		
ISSUES		
No.	DESCRIPTION	DATE
1	Issued for Development Permit	2024/02/03
CONSULTANTS		
P+A Landscape Architecture Site Planning		R. Kim Perry & Associates Inc. 112 East Broadway VANCOUVER, BC V5T 1V9 1 602 738 4118 1 602 738 4116 www.perryandassociates.ca
SEAL		
PRIME CONSULTANT		
IBI IBI GROUP ARCHITECTS (CANADA) INC. 705-1025 West Pender Street Vancouver, BC V6E 4B1 Canada tel: 604 683 8707 fax: 604 683 0462 ibi@pbc.com		
PROJECT		
NANAIMO CORRECTIONAL CENTRE REPLACEMENT 3945 BIGGS ROAD NANAIMO BC V9R 5N5, CANADA		
PROJECT NO: 19-080	SCALE: As Shown	
DRAWN BY: JP	CHECKED BY: MP	
PROJECT MGR: JP	APPROVED BY: MP	
SHEET TITLE		
Landscape Details		
SHEET NUMBER	L5.0	ISSUE

DATE PLOTTED: 2024-02-03 10:58 AM



Visitor Arrival Plaza with Planting, Seating Elements, Bollards and Flag Poles



The Commons Plaza with Organic Edges



Outdoor Patios Adjacent Support Buildings



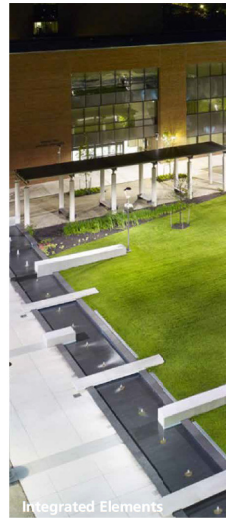
The Commons



Support Building Entrance



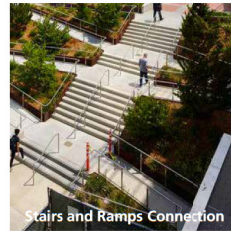
Visitor Arrival Plaza with Planting, Seating Elements and Flag Poles



Integrated Elements



Planted Berms



Stairs and Ramps Connection



Neighbourhood Seating Node



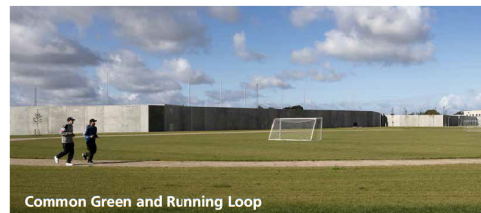
Flex Use Plaza with Basketball Court



Council Circle



Cast Concrete Elements



Common Green and Running Loop



Amphitheatre

ARRIVAL PLAZA

COMMONS AREAS

NEIGHBOURHOOD AND GATHERING SPACES

CLIENT		
<p>COPYRIGHT All rights reserved. This document is the property of the client and is not to be reproduced, stored in a retrieval system, or transmitted in any form or by any means, electronic, mechanical, photocopying, recording, or by any information storage and retrieval system, without the prior written permission of the client. The client shall be responsible for any updates, modifications, and additions to this document. This document shall be void if it is not signed by the client.</p> <p>IBI Group Architects (Canada) Inc. 111 Number 6 St. Group of Companies</p>		
ISSUES		
No.	DESCRIPTION	DATE
1	Issued for Development Permit	2024/02/03
CONSULTANTS		
<p>P+A Landscape Architecture Site Planning</p> <p>8, Kim Perry & Associates Inc. 112 East Broadway Vancouver, BC V5T 1V9 T 604 738 4118 F 604 738 4116 www.perryandassociates.ca</p>		
SEAL		
<p>PRIME CONSULTANT</p> <p>IBI GROUP ARCHITECTS (CANADA) INC. 170, 108 West Pender Street Vancouver, BC V6E 4B1 Canada Tel: 604 683 8797 Fax: 604 683 0862 ibigroup.com</p>		
<p>PROJECT</p> <p>NANAIMO CORRECTIONAL CENTRE REPLACEMENT 3945 BIGGS ROAD NANAIMO, BC V9R 5N3, CANADA</p>		
PROJECT NO: 19-080	SCALE: 1:750	
DRAWN BY: JB	CHECKED BY: MP	
PROJECT MGR: JP	APPROVED BY: MP	
SHEET TITLE Landscape Precedents		
SHEET NUMBER L6.0	ISSUE	2024-02-03



Tree Planting between Staff Parking Lots



Granular Pathways



Cedar Log and Stump Seating



Planted Berms and Hedgerows providing Visual Screening



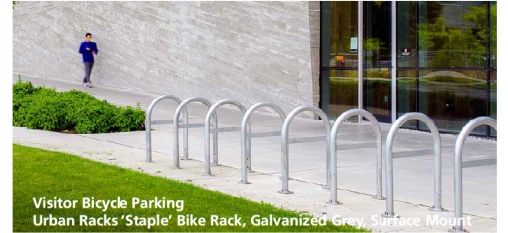
Integrated Stormwater Solutions



Asphalt Pathways and Paving Areas



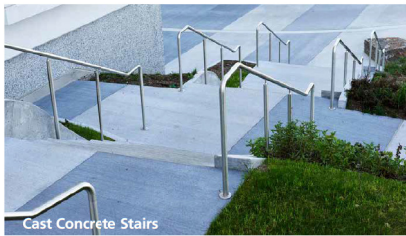
Flex-Use Common Green Area



Visitor Bicycle Parking
Urban Racks 'Staple' Bike Rack, Galvanized Grey, Surface Mount



Cast Concrete Paving c/w Broom Finish



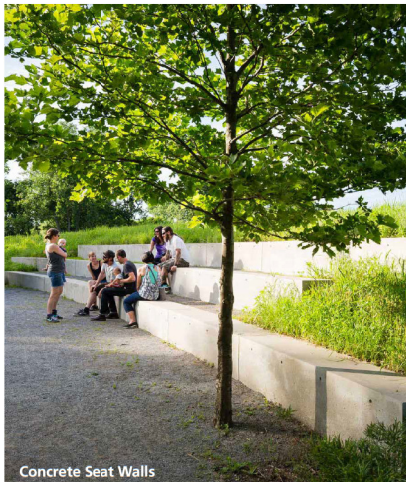
Cast Concrete Stairs



Maglin 510 Backed Bench, Powdercoat Silver 14, Surface Mount



Painted Asphalt Patterns at Neighbourhood Plazas



Concrete Seat Walls



Basketball Hoop

Maglin 250 Trash Container
Powdercoat Silver 14, Surface Mount



Precast Concrete Wheel Stops



Stamped Asphalt Pattern at Nodes



Dero 'Single Locker', Powdercoat Grey - Secure Staff Bicycle Parking

PARKING LOTS

MATERIALS AND SITE ELEMENTS

CLIENT

COPYRIGHT
The drawings, text and information contained herein are the property of the author and shall remain the property of the author. No part of this document may be reproduced, stored in a retrieval system, or transmitted in any form or by any means, electronic, mechanical, photocopying, recording, or by any information storage and retrieval system, without the prior written permission of the author. © 2021 IB Group Inc. All rights reserved.

IB Group Architecture (Canada) Inc.
111 number 4th St. Group of Companies

ISSUES	DESCRIPTION	DATE
1	Issued for Development Plans	2021/02/03

CONSULTANTS

P+A
Landscape Architecture
Site Planning

8, Kim Perry & Associates Inc.
112 East Broadway
VANCOUVER, BC V5T 1V9
T 604 738 4118
F 604 738 4116
www.kimperryandassociates.ca

SEAL

PRIME CONSULTANT

IB GROUP
ARCHITECTS (CANADA) INC.
705-1028 West Fraser Street
VANCOUVER, BC V6E 4B1 Canada
Tel: 604 683 8797 Fax: 604 683 8802
ibgroup.com

PROJECT

NANAIMO CORRECTIONAL CENTRE REPLACEMENT
3945 BIGGS ROAD
NANAIMO, BC
V9R 5N3, CANADA

PROJECT NO: 19-080	SCALE: 1:750
DRAWN BY: JB	CHECKED BY: MP
PROJECT MGR: JP	APPROVED BY: MP

SHEET TITLE
Landscape Precedents

SHEET NUMBER L6.1	ISSUE 2021-02-03
-----------------------------	---------------------