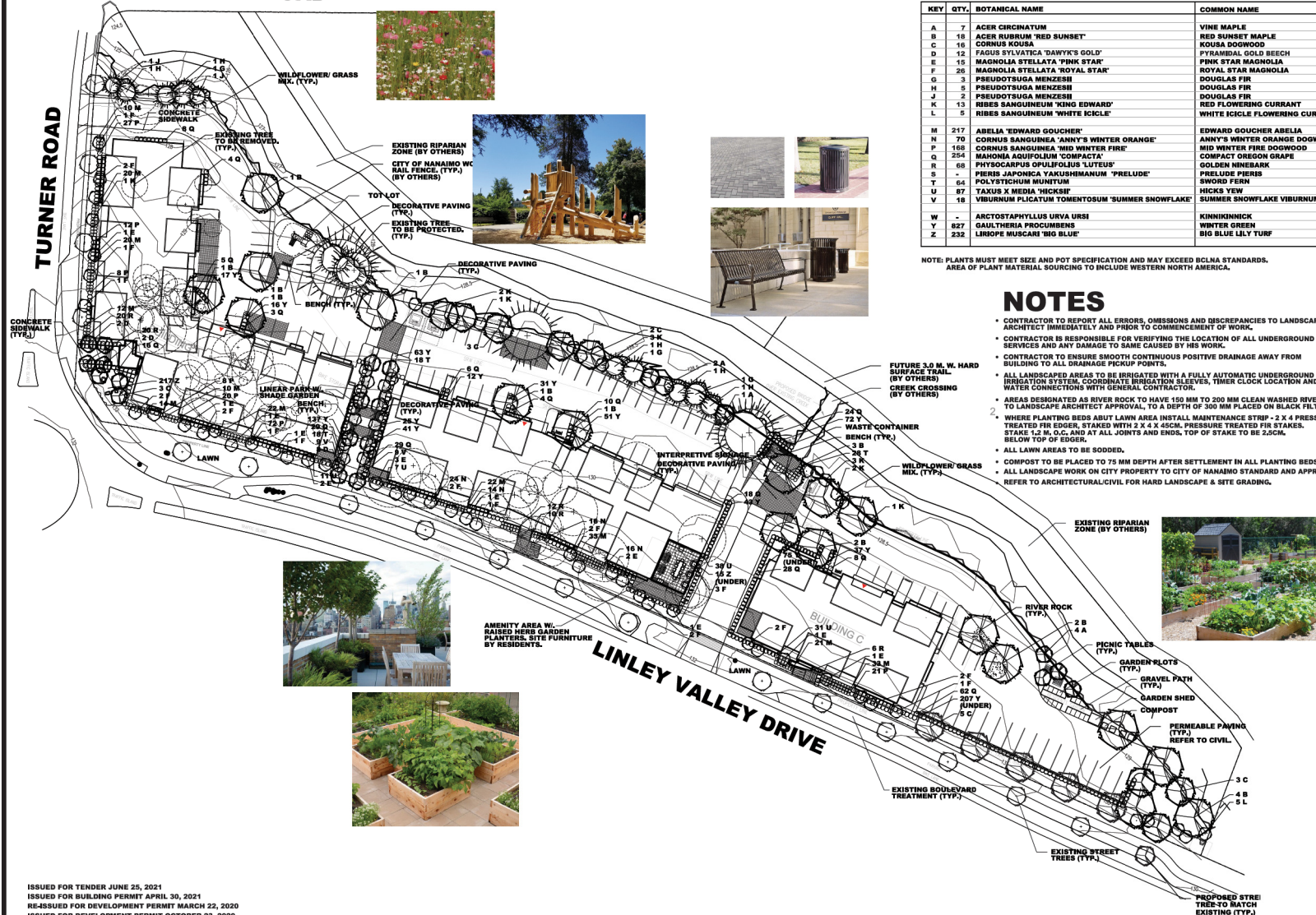


ATTACHMENT G LANDSCAPE PLAN AND DETAILS

NELSON ROAD



PLANT LIST

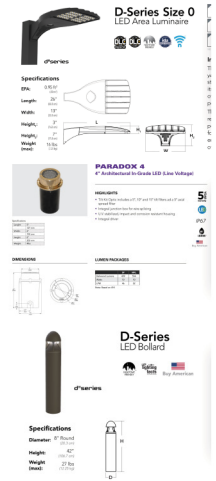
KEY	QTY.	BOTANICAL NAME	COMMON NAME	SIZE	ROOTS	COMMENTS
A	7	ACER CIRCINATUM	VINE MAPLE	2.5 M HT.	B & B	MULTI-STEM, MIN. 3 STEMS, FULL.
B	10	ACER RUBRUM 'RED SUNSET'	RED SUNSET MAPLE	6.0 CM CAL. / 3.0 - 4.5 M HT.	B & B	FULL, 1.5 M HT. STANDARD
C	16	CORNUS KOUSA	KOUSA DOGWOOD	2.5 - 3.0 M HT.	B & B	MULTI-STEM, FULL, MIN. 3 STEMS
D	12	FAGUS SYLVATICA 'DANYK'S GOLD'	PYRAMIDAL GOLD BEECH	6.0 CM CAL. / 3.5-4.0 M HT.	B & B	MULTI-STEM, FULL, MIN. 3 STEMS
E	10	MAGNOLIA STELLATA 'PINK STAR'	PINK STAR MAGNOLIA	1.2 M HT.	B & B	MULTI-STEM, MIN. 3 STEMS, FULL
F	26	MAGNOLIA STELLATA 'ROYAL STAR'	ROYAL STAR MAGNOLIA	1.2 - 1.5 M HT.	B & B	MULTI-STEM, MIN. 3 STEMS, FULL
G	3	PSEUDOTSUGA MENZESII	DOUGLAS FIR	3.5 M HT.	B & B	FULL, NOT SHEARED
H	9	PSEUDOTSUGA MENZESII	DOUGLAS FIR	2.5 M HT.	B & B	FULL, NOT SHEARED
J	2	PSEUDOTSUGA MENZESII	DOUGLAS FIR	1.75 M HT.	B & B	FULL, NOT SHEARED
K	13	RIBES SANGUINEUM 'KING EDWARD'	RED FLOWERING CURRANT	1.5 M HT.	B & B	MULTI-STEM, FULL
L	5	RIBES SANGUINEUM 'WHITE ICICLE'	WHITE ICICLE FLOWERING CURRANT	1.2 M HT.	B & B	
NE 217		ABELIA 'EDWARD GOUCHER'	EDWARD GOUCHER ABELIA	45 CM SPR.	21 CM POT	FULL, SPECIMEN
N 70		CORNUS SANGUINEA 'ANNY'S WINTER ORANGE'	ANNY'S WINTER ORANGE DOGWOOD	60 CM HT.	27 CM POT	FULL
P 168		CORNUS SANGUINEA 'MID WINTER FIRE'	MID WINTER FIRE DOGWOOD	60 CM HT.	27 CM POT	FULL
Q 254		MAGNOLIA AQUILIFORMIS 'CONTACTA'	CONTACT OREGON GRAPE	45 CM HT.	27 CM POT	FULL
R 68		PHYSCARPUS OPULIFOLIUS 'LUTEUS'	GOLDEN NINEBARK	60 CM HT.	27 CM POT	FULL, EVENLY BRANCHED
S -		PIERIS JAPONICA YAKUSHIMANUM 'PRELUDE'	PRELUDE PIERIS	45 CM HT.	27 CM POT	FULL
T 64		POLYSTICHUM MUNITUM	SWORD FERN	60 CM HT.	27 CM POT	FULL
U 87		TAXUS X MEDIA 'HICKSII'	HICKS YEW	1.0 M HT.	B & B	FULL
V 18		VIBURNUM PLICATUM TOMENTOSUM 'SUMMER SNOWFLAKE'	SUMMER SNOWFLAKE VIBURNUM	60 CM HT.	27 CM POT	FULL
W -		ARCTOSTAPHYLLUS URYA URSI	KINNICKINICK	30 CM SPR.	15 CM POT	MIN. 3 LEADERS, PLANT 45 CM O.C.
Y 827		GALThERIA PROCRUMBENS	WINTER GREEN	20 CM SPR.	15 CM POT	FULL, PLANT 30 CM O.C.
Z 232		LIRIODIUM MUSCARI 'BIG BLUE'	BIG BLUE LILY TURF	40 CM HT.	21 CM POT	FULL, PLANT 45 CM O.C.

NOTE: PLANTS MUST MEET SIZE AND POT SPECIFICATION AND MAY EXCEED BCNA STANDARDS. AREA OF PLANT MATERIAL SOURCING TO INCLUDE WESTERN NORTH AMERICA.

NOTES

- CONTRACTOR TO REPORT ALL ERRORS, OMISSIONS AND DISCREPANCIES TO LANDSCAPE ARCHITECT IMMEDIATELY AND PRIOR TO COMMENCEMENT OF WORK.
- CONTRACTOR IS RESPONSIBLE FOR VERIFYING THE LOCATION OF ALL UNDERGROUND SERVICES AND ANY DAMAGE TO SAME CAUSED BY HIS WORK.
- CONTRACTOR TO ENSURE SMOOTH CONTINUOUS POSITIVE DRAINAGE AWAY FROM BUILDING TO ALL DRAINAGE PICKUP POINTS.
- ALL LANDSCAPED AREAS TO BE IRRIGATED WITH A FULLY AUTOMATIC UNDERGROUND IRRIGATION SYSTEM. COORDINATE IRRIGATION ELSEVISES, TIMER CLOCK LOCATION AND WATER CONNECTIONS WITH GENERAL CONTRACTOR.
- AREAS DESIGNATED AS RIVER ROCK TO HAVE 150 MM TO 200 MM CLEAN WASHED RIVER ROCK TO LANDSCAPE ARCHITECT APPROVAL TO A DEPTH OF 300 MM PLACED ON BLACK FILTER CLOTH.
- WHERE PLANTING BEDS ABUT LAWN AREA INSTALL MAINTENANCE STRIP - 2 X 4 PRESSURE TREATED FIR EDGER, STAKED WITH 2 X 4 X 45CM. PRESSURE TREATED FIR STAKES. STAKES 1.2 M O.C. AND AT ALL JOINTS AND ENDS. TOP OF STAKE TO BE 2.5CM. BELOW TOP OF EDGER.
- ALL LAWN AREAS TO BE SODDED.
- COMPOST TO BE PLACED TO 75 MM DEPTH AFTER SETTLEMENT IN ALL PLANTING BEDS.
- ALL LANDSCAPE WORK ON CITY PROPERTY TO CITY OF NANAIMO STANDARDS AND APPROVAL. REFER TO ARCHITECTURAL/CIVIL FOR HARD LANDSCAPE & SITE GRADING.

SITE LIGHTING



ISSUED FOR TENDER JUNE 25, 2021
ISSUED FOR BUILDING PERMIT APRIL 30, 2021
RE-ISSUED FOR DEVELOPMENT PERMIT MARCH 22, 2020
ISSUED FOR DEVELOPMENT PERMIT OCTOBER 23, 2020

NO.	DATE	BY	REVISION
01	JUNE 10, 2021	S.P.	PLANNER'S COMMENTS
02	JULY 06, 2021	J.P.	REPLACEMENT TREES (104)
03	JULY 06, 2021	J.P.	SITE CHARACTER IMAGES

SCALE: 1:400

DATE: APRIL 21, 2021

PROJECT: RH-L1R1R

NO.: 253 18 01



RUTHERFORD HOUSING NANAIMO, B.C.



LANDSCAPE PLAN

RECEIVED
DP1210
2021-JUL-08
COURTNEY PLANNING

PLANT LIST

KEY	QTY.	BOTANICAL NAME	COMMON NAME	SIZE	ROOTS	COMMENTS
A	7	ACER CIRCINATUM	VINE MAPLE	2.5 M HT.	B & B	MULTI-STEM, MIN. 3 STEMS, FULL
B	18	ACER RUBRUM 'RED SUNSET'	RED SUNSET MAPLE	6.0 CM CAL. / 3.5 - 4.5 M HT.	B & B	FULL, 1.8 M HT. STANDARD
C	16	CORNUS KOUSA	KOUSA DOGWOOD	2.5 - 3.0 M HT.	B & B	MULTI-STEM, FULL, MIN. 3 STEMS
D	12	FAGUS SYLVATICA 'DAWKY'S GOLD'	PYRAMIDAL GOLD BEECH	6.0 CM CAL. / 3.5-4.0 M HT.	B & B	MULTI-STEM, FULL, MIN. 3 STEMS
E	15	MAGNOLIA STELLATA 'PINK STAR'	PINK STAR MAGNOLIA	1.2 HT.	B & B	MULTI-STEM, MIN. 3 STEMS, FULL
F	26	MAGNOLIA STELLATA 'ROYAL STAR'	ROYAL STAR MAGNOLIA	1.2 - 1.5 M HT.	B & B	MULTI-STEM, MIN. 3 STEMS, FULL
G	3	PSEUDOTSUGA MENZESII	DOUGLAS FIR	3.5 M HT.	B & B	FULL, NOT SHEARED
H	5	PSEUDOTSUGA MENZESII	DOUGLAS FIR	2.5 M HT.	B & B	FULL, NOT SHEARED
J	2	PSEUDOTSUGA MENZESII	DOUGLAS FIR	1.75 M HT.	B & B	FULL, NOT SHEARED
K	13	RIBES SANGUINEUM 'KING EDWARD'	RED FLOWERING CURRANT	1.5 M HT	B & B	MULTI-STEM, FULL
L	5	RIBES SANGUINEUM 'WHITE ICICLE'	WHITE ICICLE FLOWERING CURRANT	1.2 M HT	B & B	
M	217	ABELIA 'EDWARD GOUCHER'	EDWARD GOUCHER ABELIA	45 CM SPR.	21 CM POT	FULL, SPECIMEN
N	70	CORNUS SANGUINEA 'ANNY'S WINTER ORANGE'	ANNY'S WINTER ORANGE DOGWOOD	60 CM HT.	27 CM POT	FULL
P	168	CORNUS SANGUINEA 'MID WINTER FIRE'	MID WINTER FIRE DOGWOOD	60 CM HT.	27 CM POT	FULL
Q	254	MAHONIA AQUIFOLIUM 'COMPACTA'	COMPACT OREGON GRAPE	45 CM HT.	27 CM POT	FULL
R	68	PHYSOCARPUS OPULIFOLIUS 'LUTEUS'	GOLDEN NINEBARK	60 CM HT.	27 CM POT	FULL, EVENLY BRANCHED
S	-	PIERIS JAPONICA YAKUSHIMANUM 'PRELUDE'	PRELUDE PIERIS	45 CM HT.	27 CM POT	FULL
T	64	POLYSTICHUM MUNITUM	SWORD FERN	60 CM HT.	27 CM POT	FULL
U	87	TAXUS X MEDIA 'HICKSII'	HICKS YEW	1.0 M. HT.	B & B	FULL
V	18	VIBURNUM PLICATUM TOMENTOSUM 'SUMMER SNOWFLAKE'	SUMMER SNOWFLAKE VIBURNUM	60 CM HT.	27 CM POT	FULL
W	-	ARCTOSTAPHYLLUS URVA URSI	KINNIKINICK	30 CM SPR.	15 CM POT	MIN. 3 LEADERS, PLANT 45 CM O.C.
Y	827	GAULTHERIA PROCUMBENS	WINTER GREEN	20 CM SPR.	15 CM POT	FULL, PLANT 30 CM. O.C.
Z	232	LIRIOPE MUSCARI 'BIG BLUE'	BIG BLUE LILY TURF	40 CM HT.	21 CM POT	FULL, PLANT 45 CM O.C.

NOTE: PLANTS MUST MEET SIZE AND POT SPECIFICATION AND MAY EXCEED BCLNA STANDARDS.
AREA OF PLANT MATERIAL SOURCING TO INCLUDE WESTERN NORTH AMERICA.

NOTES

- CONTRACTOR TO REPORT ALL ERRORS, OMISSIONS AND DISCREPANCIES TO LANDSCAPE ARCHITECT IMMEDIATELY AND PRIOR TO COMMENCEMENT OF WORK.
- CONTRACTOR IS RESPONSIBLE FOR VERIFYING THE LOCATION OF ALL UNDERGROUND SERVICES AND ANY DAMAGE TO SAME CAUSED BY HIS WORK.
- CONTRACTOR TO ENSURE SMOOTH CONTINUOUS POSITIVE DRAINAGE AWAY FROM BUILDING TO ALL DRAINAGE PICKUP POINTS.
- ALL LANDSCAPED AREAS TO BE IRRIGATED WITH A FULLY AUTOMATIC UNDERGROUND IRRIGATION SYSTEM. COORDINATE IRRIGATION SLEEVES, TIMER CLOCK LOCATION AND WATER CONNECTIONS WITH GENERAL CONTRACTOR.
- AREAS DESIGNATED AS RIVER ROCK TO HAVE 150 MM TO 200 MM CLEAN WASHED RIVER ROCK TO LANDSCAPE ARCHITECT APPROVAL, TO A DEPTH OF 300 MM PLACED ON BLACK FILTER CLOTH.
- WHERE PLANTING BEDS ABUT LAWN AREA INSTALL MAINTENANCE STRIP - 2 X 4 PRESSURE TREATED FIR EDGER, STAKED WITH 2 X 4 X 45CM. PRESSURE TREATED FIR STAKES. STAKE 1.2 M. O.C. AND AT ALL JOINTS AND ENDS. TOP OF STAKE TO BE 2.5CM. BELOW TOP OF EDGER.
- ALL LAWN AREAS TO BE SODDED.
- COMPOST TO BE PLACED TO 75 MM DEPTH AFTER SETTLEMENT IN ALL PLANTING BEDS
- ALL LANDSCAPE WORK ON CITY PROPERTY TO CITY OF NANAIMO STANDARD AND APPROVAL.
- REFER TO ARCHITECTURAL/CIVIL FOR HARD LANDSCAPE & SITE GRADING.

(Excerpts from Landscape Plan, P 1 of 2)