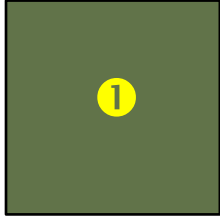


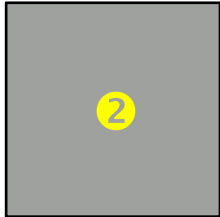
**ATTACHMENT F
LANDSCAPE PLAN AND DETAILS**

Landscape Plan ~ 478 Machleary Street

① Lawn: Fescue blend



② Aggregate concrete walkways & patios



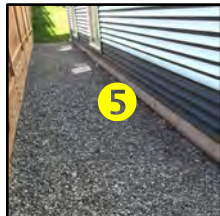
③ Driveway & parking driveway chip



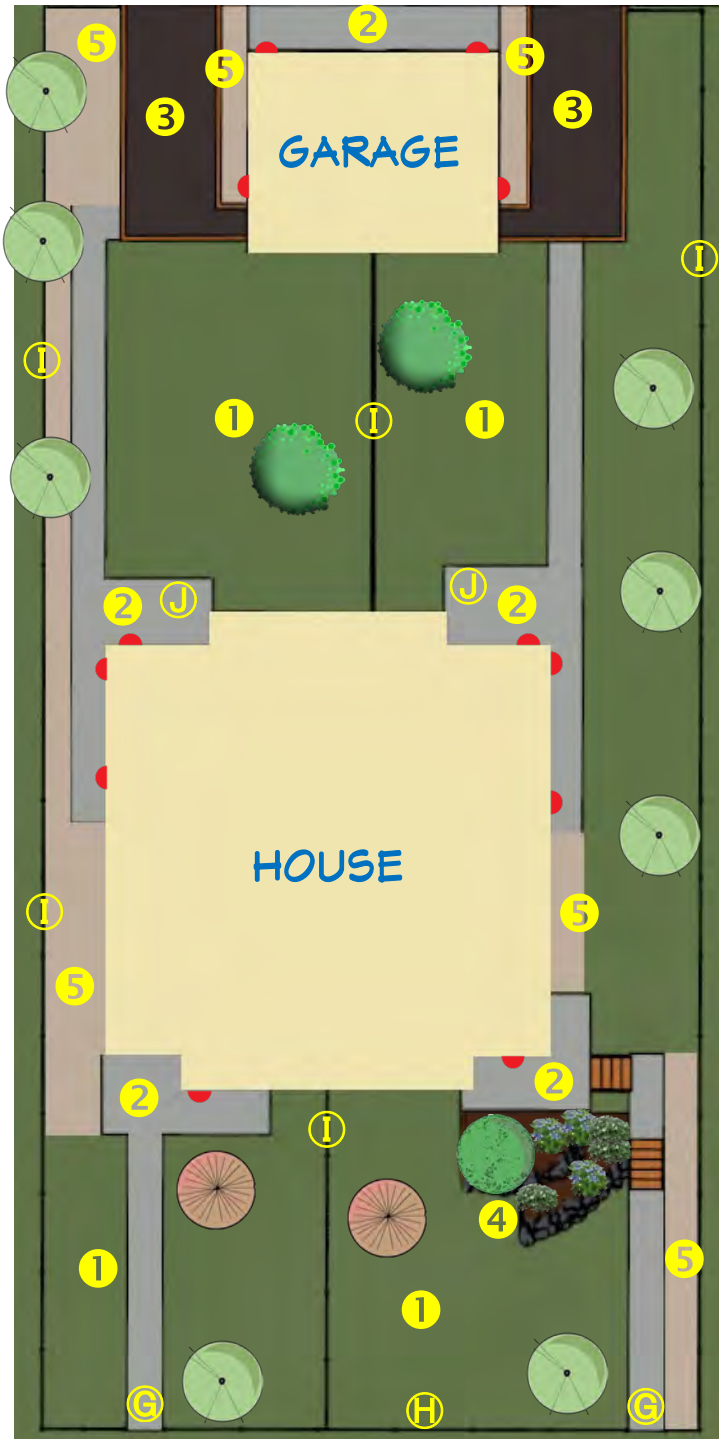
④ Basalt boulder garden wall



⑤ Ornamental rocks around building for maintenance



Ⓒ



PLANT NAMES, QUANTITIES & SIZES				
	TYPE	NAME	#	SIZE
Ⓐ	TREE	CRIMSON SPIRE OAK <small>[Quercus 'Crimson Spire']</small>	8	#7 POT
Ⓑ	FLOWERING TREE	NATIVE RED ELDERBERRY <small>[Sambucus racemosa]</small>	2	#7 POT
Ⓒ	FLOWERING TREE	BARTLETT PEAR <small>[Pyrus communis 'Bartlett']</small>	2	#2 POT
Ⓓ	SHRUB	LIMELIGHT HYDRANGEA <small>[Hydrangea paniculata]</small>	2	#2 POT
Ⓔ	PERENNIALS	DOUGLAS NATIVE ASTER <small>[Aster douglasii subspicatus]</small>	3	10CM POT
Ⓕ	PERENNIALS	NOOKKA ROSE <small>[Rose nutkana]</small>	3	10CM POT

PLANT LEGEND			
	Ⓐ CRIMSON SPIRE OAK		Ⓓ LIMELIGHT HYDRANGEA
	Ⓑ NATIVE RED ELDERBERRY		Ⓔ DOUGLAS NATIVE ASTER
	Ⓒ BARTLETT PEAR TREE		Ⓕ NOOKKA ROSE

FENCING & LIGHTING	
ITEM	COMMENTS
Ⓖ FRONT ENTRY (2)	CLOSING & LOCKING
Ⓗ FRONT FENCE	47" (1.2M) HIGH
Ⓘ SIDE/REAR FENCE	94.4" (2.4M) HIGH
Ⓙ GARBAGE CANS	1 STORAGE AREA PER UNIT
Ⓚ HOUSE LIGHT	12 WALL/SOFFIT MOUNTED



RECEIVED
DP1205
2021-MAY-13
Current Planning

PLANT PHOTO LEGEND



Ⓐ CRIMSON SPIRE OAK



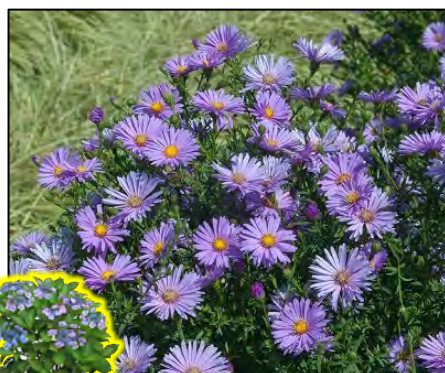
Ⓑ NATIVE RED ELDERBERRY



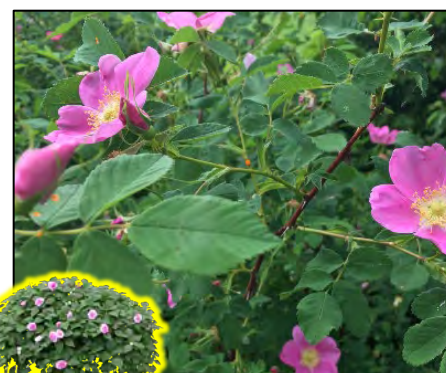
Ⓒ BARTLETT PEAR



Ⓓ LIMELIGHT HYDRANGEA



Ⓔ DOUGLAS NATIVE ASTER



Ⓕ NOOTKA ROSE

Things to Note:

1. Predominantly native plants have been selected for the landscaping to reduce water consumption and to encourage better rooting through acclimatization.
2. A low maintenance blend of Fescue grass has been chosen as this grass blend is deep rooted requiring less water while also needing less fertilizer and less maintenance as its maximum growing height is about 6 inches.
3. The circumference of the building is skirted in an ornamental rock covering with a board edging. This rock skirting will prevent moisture and insect damage.
4. An underground sprinkler system was not considered as the property's landscaping plan is orientated toward the reduction of water consumption. Also, four hose bibbs will be installed on this property.
5. As this side-by-side duplex has no common areas, the homeowners of Unit A and Unit B will be able to further develop their own landscaping plans independently.

RECEIVED
 DP1205
 2021-MAY-13
 Current Planning