

# ATTACHMENT A

REFERENCE PLAN TO ACCOMPANY A LEASE OF PART OF LOT 1, SECTIONS 18, 19 AND 20, RANGE 7, MOUNTAIN DISTRICT, PLAN 27441, EXCEPT THOSE PARTS IN PLANS 40622 AND 44255 LEASE AND APPROVAL OF THE APPROVING OFFICER TO EXPIRE \_\_\_\_\_ PURSUANT TO SECTION 99(1)(K), LAND TITLE ACT

PLAN EPP106917

BCGS 920,011

0 20 40 80 120 160 200  
The intended plot size of this plan is 560mm in width by 430mm in height (C size) when plotted at a scale of 1:2000

**LEGEND**

- denotes Control Monument found
- denotes Standard Iron Post found
- denotes Standard Iron Post placed
- denotes post removed and Standard Iron Post placed

All distances are in metres.

This plan lies within Integrated Survey Area No. 20, Nanaimo, NAD83 (CSRS) 3.0.0.BC.1.NM

Grid bearings are derived from observations between geodetic control monuments 7805466 and 7805467 and are referred to the central meridian of UTM Zone 10.

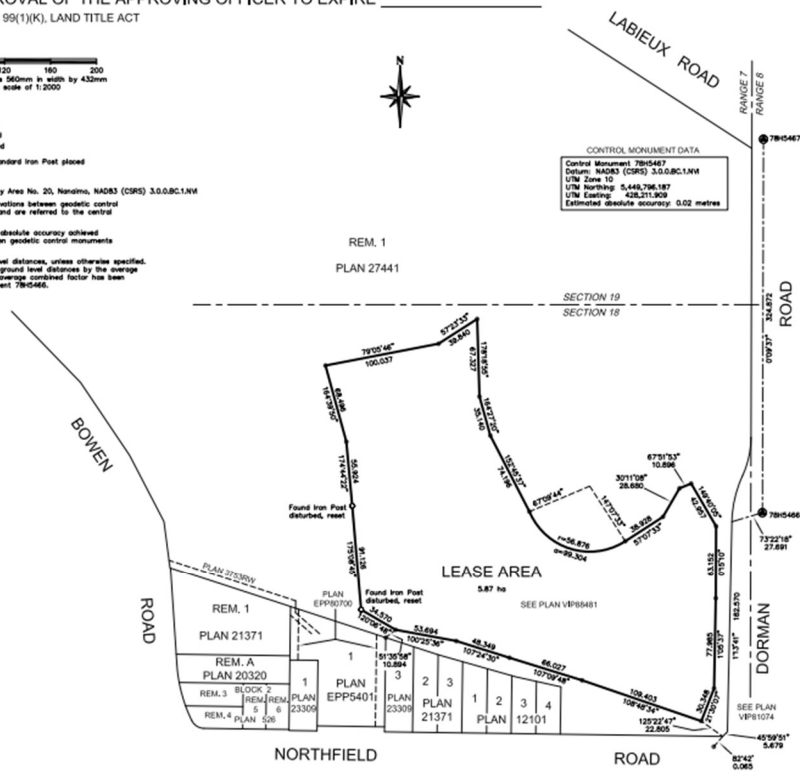
The UTM coordinates and estimated absolute accuracy achieved are derived from observations between geodetic control monuments 7805466 and 7805467.

The plan shows horizontal ground level distances, unless otherwise specified. To compute grid distances, multiply ground level distances by the average combined factor of 0.9999502. The average combined factor has been determined based on control monument 7805466.



**CONTROL MONUMENT DATA**  
Control Monument 7805467  
Datum: NAD83 (CSRS) 3.0.0.BC.1.NM  
UTM Zone 10  
UTM Northing: 5,448,796.187  
UTM Easting: 428,213.909  
Estimated absolute accuracy: 0.02 metres

**CONTROL MONUMENT DATA**  
Control Monument 7805466  
Datum: NAD83 (CSRS) 3.0.0.BC.1.NM  
UTM Zone 10  
UTM Northing: 5,448,471.430  
UTM Easting: 428,211.001  
Estimated absolute accuracy: 0.02 metres



J.E. ANDERSON & ASSOCIATES  
B.C. Land Surveyors - Consulting Engineers  
Victoria - Nanaimo - Parksville - Campbell River, B.C.  
File: 89956

This plan lies within the jurisdiction of the Approving Officer for the City of Nanaimo  
This plan lies within the Regional District of Nanaimo  
The field survey represented by this plan was completed on the 26th day of November, 2020.  
Douglas W. Home, BCLS 792