



CONFIRMING CITY PORTRAIT

2021-MAY-10

AGENDA



Responding to April 12 GPC Feedback



Confirming City Portrait



Preparation for May 20 Workshop



Next Steps





Why Crime Severity Index Is Not Used

- CSI is more useful as a tool to know what police resources are needed in a community, rather than as a measure of safety (e.g., stolen credit card used 20 times can spike CSI)
- The Police Chief provides regular updates to Council, including a summary of crime statistics (compiled by the crime analyst), detachment priorities, and important cases
- Challenging to get accurate and timely police data



Background on Housing Mix Indicator

- Primarily focused on the mix of residential building types (e.g., apartments, townhomes, single family dwellings)
- Through the REIMAGINE process, we will establish targets for the mix of housing types for different areas of the city based on proximity to amenities and transit



Credit: Getty Images





Clarification on Diversity and Inclusion

- This indicator still under development in collaboration with the Advisory Committee on Accessibility and Inclusion
- Will include a mix of quantitative and qualitative data (e.g., surveys/interviews on PRC experience, number of LEAP participants, number of barrier-free facilities, etc.)
- Racial/ethnic population diversity not part of indicator



Credit: Imperial College London



Information on Traffic Injury Rate

- Measured as individual collision rate per intersection (typical unit of # *Collisions per entering vehicles*)
- This helps to establish the most dangerous intersections by evaluating on the basis of *likelihood* of a collision, not just the most commonly used intersections
- Goal is zero severe injuries/fatalities, but interim targets needed



Credit: City of Thunder Bay





Ample and Diverse Employment Opportunities

- Considers both the number and size of businesses (with employees) using Business Licensing and BC Stats data
- Businesses provide opportunities for our residents (wages), reduce poverty and crime, and generates income for consumer spending and revenues to support services
- Supporting statistic of Economic Diversity (growth in specific sectors) could replace this indicator at Council direction



Responding to April 12 GPC Feedback



Confirming City Portrait



Preparation for May 20 Workshop



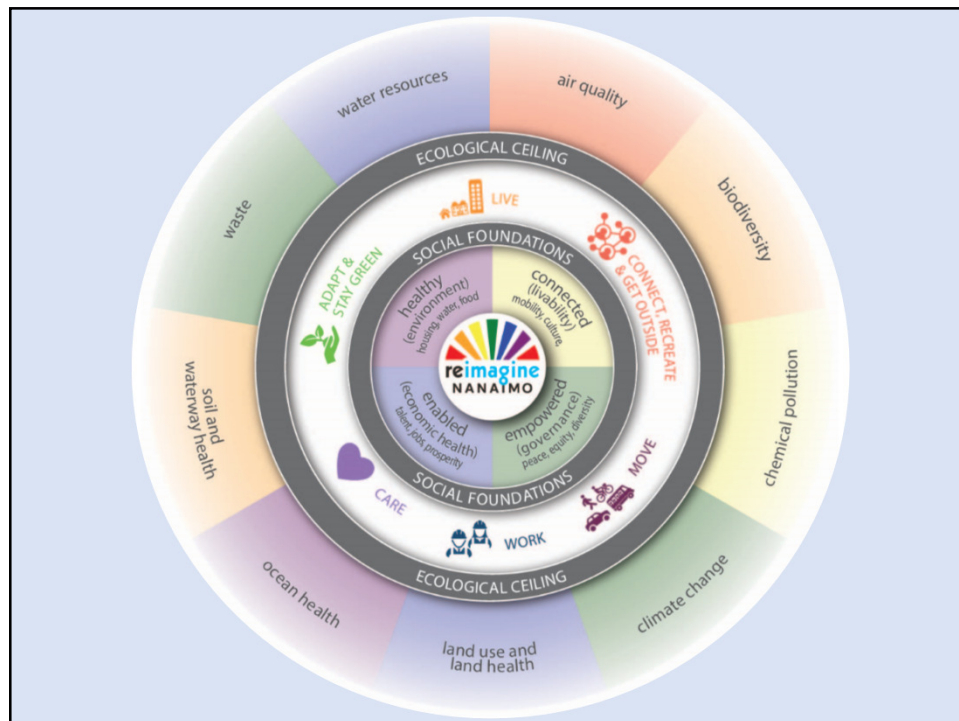
Next Steps





5 Overarching Goals

- **Healthy** – Support well-being for all
- **Connected** - Build a more sustainable community
- **Enabled** - Promote a thriving economy
- **Empowered** - Encourage social enrichment
- **Ecological** - Protect and enhance our environment





Responding to April 12 GPC Feedback



Confirming City Portrait



Preparation for May 20 Workshop



Next Steps



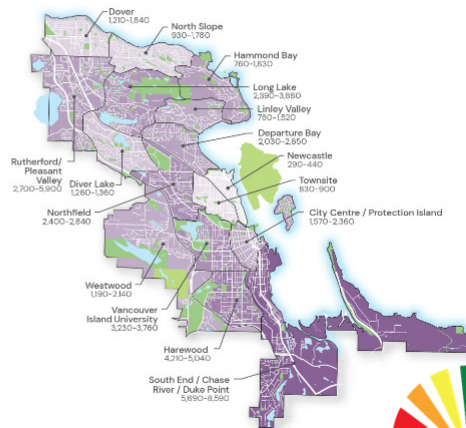
Council Workshop on Scenarios – May 20

PLANNING CONTEXT - GROWTH PROJECTIONS

GROWTH PROJECTIONS

(City of Nanaimo Population, Housing and Employment Projections, 2022)

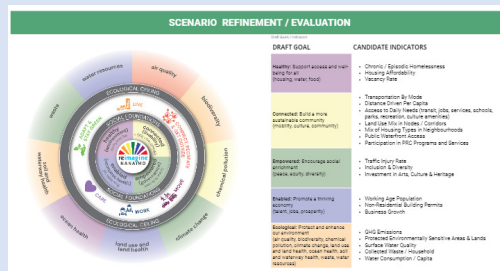
- Current Population = 100,000
- 2046 Estimated Population = 140,000
- Demographic Considerations:
 - >75 age group will grow fastest
 - <35 age group will grow slowest
- 2046 Estimated Additional Housing Units = 21,000
- 2046 Estimated Jobs = 18,000
- South Nanaimo is predicted as the primary location for growth in this planning period





Council Workshop on Scenarios (cont.)

- *Purpose of Workshop:* To review Land Use, Mobility and PRC Scenarios in order to prepare for Phase 2 Public Engagement
- Not a decision-making point, but an opportunity for dialogue, debate, and discussion



Responding to April 12 GPC Feedback



Confirming City Portrait

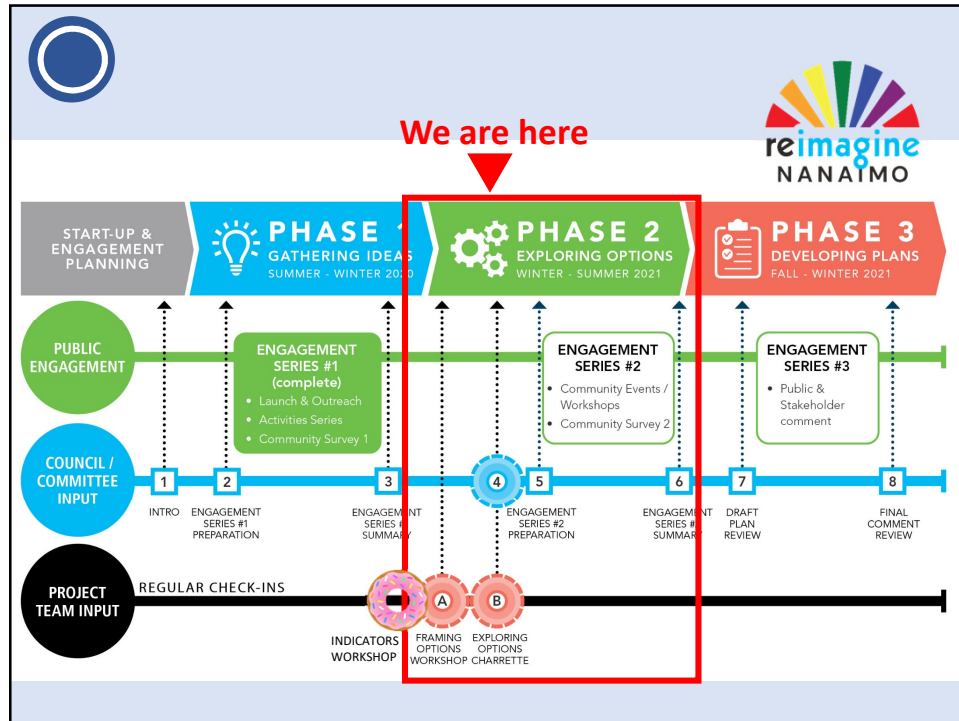


Preparation for May 20 Workshop



Next Steps





KEY DATES

DRAFT REIMAGINE NANAIMO – 2021-22 MILESTONE CALENDAR

PHASE 2 MILESTONES									
January	February	March	April	May	June	July	August	Sept	
Phase 1 Public Engagement Summary Finalized Base Maps Finalized Staff begin review of indicators for Doughnut Economics City Portrait Feedback from Environment Committee	★ Feb 8 GPC ✓ Phase 1 Engagement Summary Presented ★ Feb 22 GPC ✓ Staff discuss milestones and potential project outcomes Ongoing staff review of indicators for Doughnut Economics City Portrait	★ Mar 8 GPC ✓ Preliminary City Portrait & Indicators ★ Mar 10 ✓ Targets & Indicators Workshop/Charrette ★ Mar 22 GPC Council to update on Targets & Indicators to Evaluate Scenarios Refine Indicators Model options Staff workshop on exploring options/scenarios	Further model options/scenarios Prepare Phase 2 engagement materials Committees Feedback ★ April 29 Council workshop/Charrette on exploring options/scenarios to use for Phase 2 engagement	★ May 10 GPC Final City Portrait Approval ★ May 20 Council workshop/Charrette on exploring options/scenarios to use for Phase 2 engagement ★ May 31 GPC Updates on Phase 2 engagement	Phase 2 online questionnaire launched Phase 2 Statistical Survey mailed out Virtual workshops / at-home activities Ongoing Events & Promotions ★ Jun 14 GPC ★ Jun 28 GPC Updates on Phase 2 engagement Committees Feedback Drafting Plans	★ July 12 GPC ★ July 26 GPC Update on Phase 2 engagement numbers/ demographics Draft Plans: internal staff review Drafting Plans	No GPC Mtgs Preferred scenarios confirmed Draft Plans refined & reviewed with internal team and Committees Update Climate modelling Phase 2 Engagement closes Preparation of summary of key plan directions and rationale Refining Plans	★ Sept 27 GPC Phase 2 Engagement Summary presented Committees Feedback Refining Plans	
WSS development synced with land use scenario analysis/modelling, options development, engagement and Council meetings									
Jan 19 - EDS Task Force recommend Council endorse ★ Feb 1 Council COMPLETE EDS Endorsed	Prepare communication and engagement materials ★ Feb 1 Council COMPLETE EDS Endorsed	Establish Advisory Group List Stakeholders	Advisory Mtg #1 Introduce WSS & discuss priorities	Advisory Mtg #2 Upgrades Roadmap Virtual Stakeholder meetings	Advisory Mtg #3 Virtual Stakeholder meetings Drafting WSS	Summary and analysis of WSS engagement Drafting & Refining WSS	★ Sept 27 GPC Council review as part of key strategic plans Refining WSS		
EDS and WWS, along with other documents like the Trail Implementation Plan, Culture Plan for a Creative Nanaimo, Various Park Master Plans, Food Security Plan, Health and Housing Action Plan, Age Friendly Plan etc. will inform scenario development/ options for drafting land use and policy directions in integrated plans									



Steering Committee feedback

- Feedback?
- Thoughts on next steps?
- Other comments?



REIMAGINE



Credit: Sophie Chernykh, Creative Community Contest Submission

Huy tseep q'u Siem

