



Environment Committee - Update on Indicators

2021-May-12

AGENDA



Council/Committee Workshop Highlights



Draft City Portrait Indicators



Next Steps



Indicators and Targets Workshop Highlights



- ~40 Participants (incl. Council + Committees)
- Six Facilitated “Zoom Rooms”
- 75 Potential Indicators Discussed
- 21 Indicators “Upvoted”



Breakout Room Links

ROOM 1: ENABLED
(Economic Health)
jobs, income, tourism, energy
How We Work

ROOM 2: HEALTHY & EMPOWERED
(Environment)
housing, water, food
(Governance)
peace, equity, diversity
How We Care

ROOM 3: CONNECTED
(Livability)
mobility, community, neighbourhoods
How We Live & Move

ROOM 4: CONNECTED
(Livability)
well-being, culture
How we Connect, Recreate & Get Outside

ROOM 5a: ECOLOGICAL CEILING
air quality, biodiversity, chemical pollution, climate change
How We Adapt & Stay Green

ROOM 5b: ECOLOGICAL CEILING
land health, ocean health, soil and waterway health, waste, water resources
How We Adapt & Stay Green

LAND HEALTH / LAND USE

preliminary goal: so our lands and waters are healthy and cared for / managed sustainably

Background

- RDN Regional Growth Strategy measures:
 - amount of land in protected areas
 - growth of land use (within the Growth Containment Boundary and outside the Growth Containment Boundary)
 - Number of land use units (created through subdivision) made and outside the Growth Containment Boundary
 - Number of parcels with right-of-way
 - Amount of land classified as Private Managed Forest Land
- 1998 / 2006 Progress Nainaimo measured:
 - land area inside and outside the UCB to better understand
 - to the urban containment boundary
 - population inside and outside the UCB
 - Total area of future Resource Land designation
 - Land use in Rural Resource Land designation

COMMENTS / QUESTIONS ON THIS GOAL

Useful, but there are so many UCBs in the RGS

stormwater generated / area of permeable surfaces

Proposed REIMAGINE NAINAIMO Indicators					
INDICATOR	WHAT IT TELLS US	HOW IT'S MEASURED	DISCUSSION, QUESTIONS, SUGGESTED MODIFICATIONS	SUITABLE INDICATOR?	VOTING DOTS
1 Proportion of ESAs with Protection % of identified Environmentally Sensitive Areas that have existing protection measures <i>Desired trend: maintain / increase (no existing trend)</i>	<ul style="list-style-type: none"> • identifies the proportion of identified ESAs that are / are not protected • ESA include: <ul style="list-style-type: none"> • Coastal Bluff • Wetlands • Watercourse / Riparian • Terrestrial Herbaceous • Older second growth forest 	<ul style="list-style-type: none"> • % of protected ESAs • through GIS analysis • may consider different levels of protection (e.g. parks vs. private lands protection) • some baseline data from 1998 / 2006 available 	<p>Did also measure: theoretical riparian area vs actual</p> <p>Cultural component hand in hand with environmental</p> <p>How is riparian area defined? Is it just the watercourse? Or does it include the adjacent land? Or does it include the adjacent land that is not developed? Or does it include the adjacent land that is not developed and is not in the UCB?</p>	Yes No Maybe	
2 Area of Protected Lands total ha of lands that are protected <i>Desired trend: maintain / increase (no existing trend)</i>	<ul style="list-style-type: none"> • tells us how much land in total is within a protected area designated by the federal, provincial, or local government 	<ul style="list-style-type: none"> • % of protected ESAs • through GIS analysis • With limited undeveloped land in the City, indicator is unlikely to shift much more. City's role in land protection at the regional level may be more critical • Baseline: 1,785 ha (2015) an increase from 1,687 ha (2016) 	<p>Reclaim concrete and gray areas - regenerate land</p> <p>We need to regenerate land as we develop, daylight, rivers, protect, expand and connect natural areas</p>	Yes No Maybe	
3 Land Inside / Outside UCB Proportion of land area and population inside and outside the urban containment boundary <i>Desired trend: growth focused inside UCB (no government trend)</i>	<ul style="list-style-type: none"> • helps to track where new growth and population is occurring with respect to the urban containment boundary 	<ul style="list-style-type: none"> • ha inside / outside UCB • population inside / outside UCB • already being monitored for RDN Regional Growth Strategy 	<p>Reclaim concrete and gray areas - regenerate land</p> <p>Impossible growth can still happen and is supported in existing policy within the UCB.</p>	Yes No Maybe	
4 Diversity of Land Use in UCB Diversity of land use per square km inside the Urban Containment Boundary <i>Desired trend: increasing diversity (not determined)</i>	<ul style="list-style-type: none"> • helps to understand the mix of land uses being developed within the urban containment boundary 	<ul style="list-style-type: none"> • ratio of land uses • through GIS analysis • no baseline identified 	<p>Maybe a useful item: Land outside the UCB that can support local agricultural production for food security. Flip this one around a bit.</p> <p>e.g. presence rural/forestry land areas outside UCB</p>	Yes No Maybe	



Council/Committee Workshop Highlights



Draft City Portrait Indicators



Next Steps





5 Draft goals are organized around the doughnut – one goal each for the 4 **social** foundations, one for the **ecological** ceiling

- **Healthy**
- **Connected**
- **Enabled**
- **Empowered**
- **Ecological**



5 Draft Goals

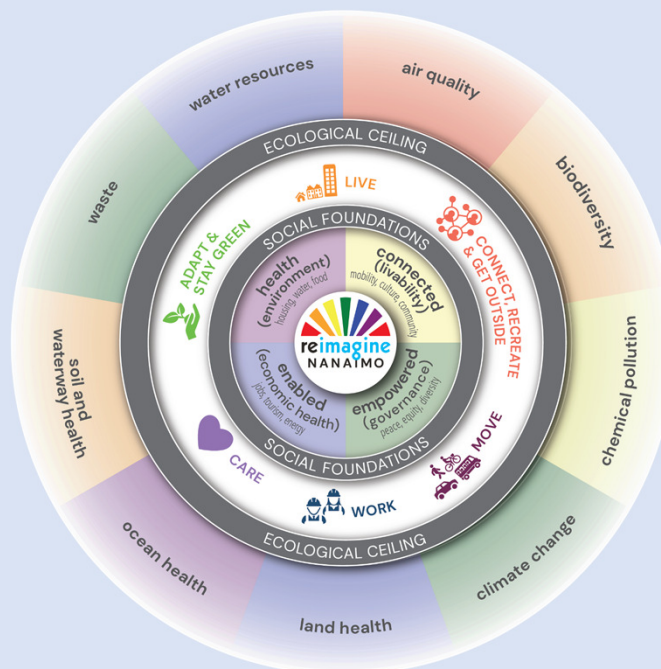
- **Healthy** – Support well-being for all
- **Connected** - Build a more sustainable community
- **Enabled** - Promote a thriving economy
- **Empowered** - Encourage social enrichment
- **Ecological** - Protect and enhance our environment





21 Draft Indicators
under the 5 Draft Goals
NOTE: This is an
evolving work in
progress

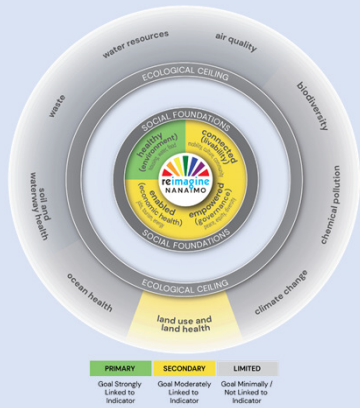
- **21 Draft Indicators**





Healthy

Build a more sustainable community
(housing, water, food)



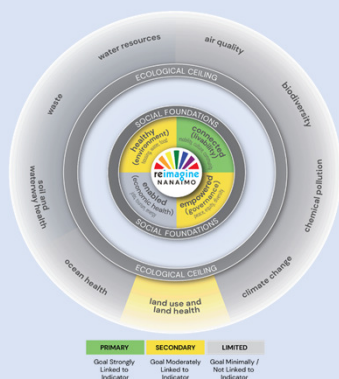
TOP INDICATORS

- Chronic / Episodic Homelessness
- Housing Affordability
- Vacancy Rate
- Mix of Housing Types in Neighbourhoods



Connected

Support access and well-being for all
(mobility, culture, community)



TOP INDICATORS

- Transportation By Mode
- Distance Driven Per Capita
- Access to Daily Needs (includes transit/jobs/services/schools/parks & rec amenities)
- Land Use Mix in Nodes / Corridors
- Public Waterfront Access

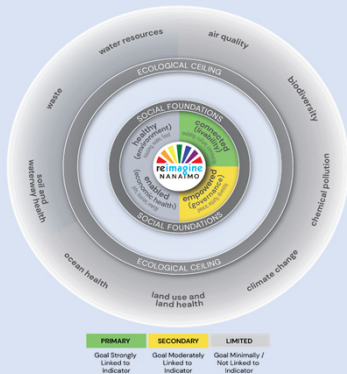




Empowered

Encourage social enrichment
(peace, equity, diversity)

TOP INDICATORS



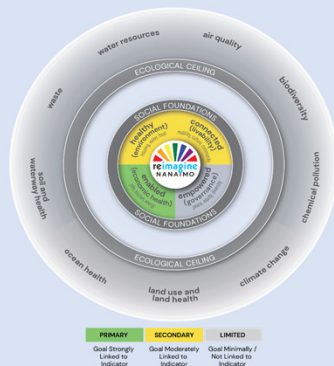
- Traffic Injury Rate
- Inclusion and Diversity
- Investment in Arts, Culture, and Heritage
- Participation in PRC Programs and Services



Enabled

Promote a thriving economy
(talent, jobs, prosperity)

TOP INDICATORS



- Working Age Population
- Non-Residential Building Permits
- Business Growth

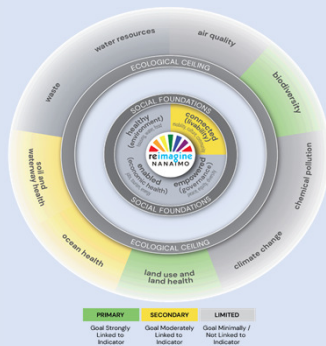




Ecological

Protect and enhance our environment

(air quality, biodiversity, chemical pollution, climate change, land use and land health, ocean health, soil and waterway health, waste, water resources)

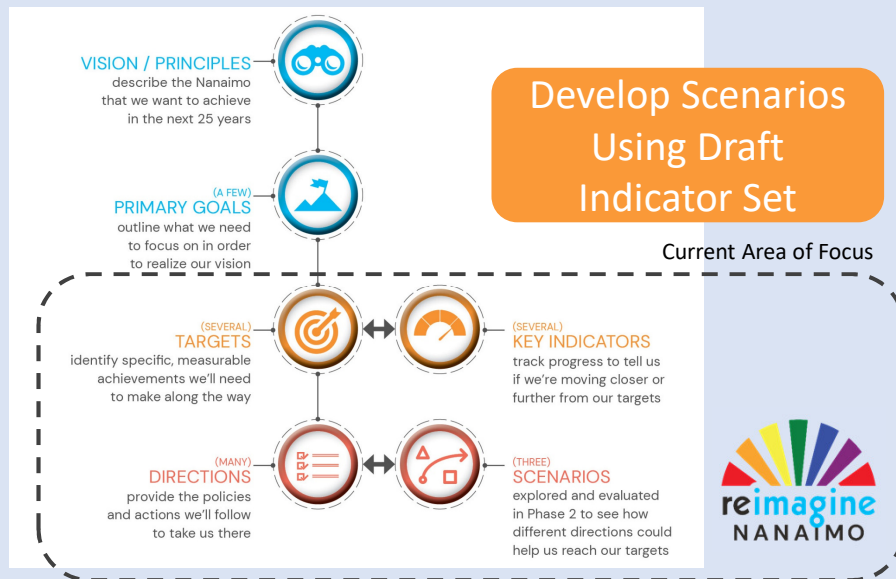


TOP INDICATORS

- GHG Emissions (community-wide)
- Protected Environmentally-Sensitive Areas and Lands
- Surface Water Quality
- Collected Waste / Household
- Water Consumption / Capita



Use Indicators to Evaluate Scenarios





Council/Committee Workshop Highlights



Draft City Portrait Indicators

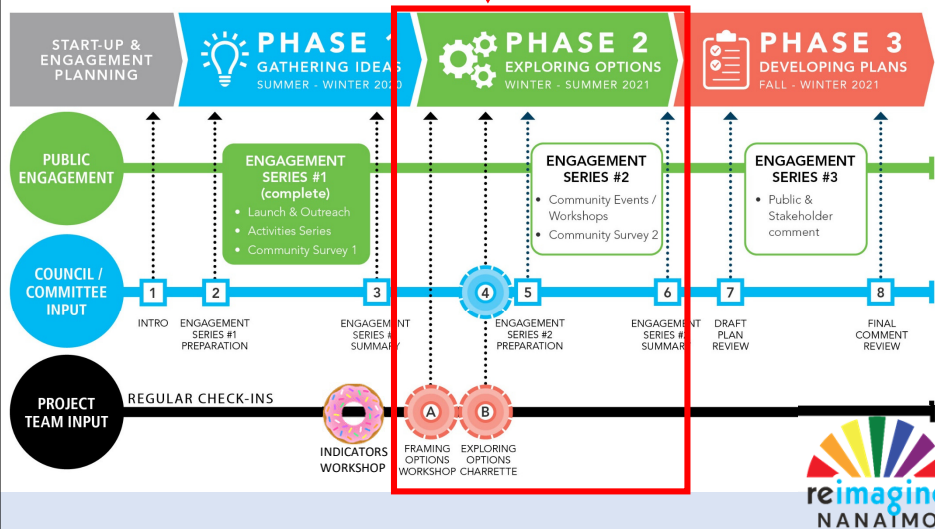


Next Steps



Next Steps

We are here



REIMAGINE

Environment Committee feedback

- Feedback?
- Thoughts on next steps?
- Other comments?



REIMAGINE



"Fun neighbourhood" by Bronwyn Moes, Age 10

Huy tseep q'u Siem

