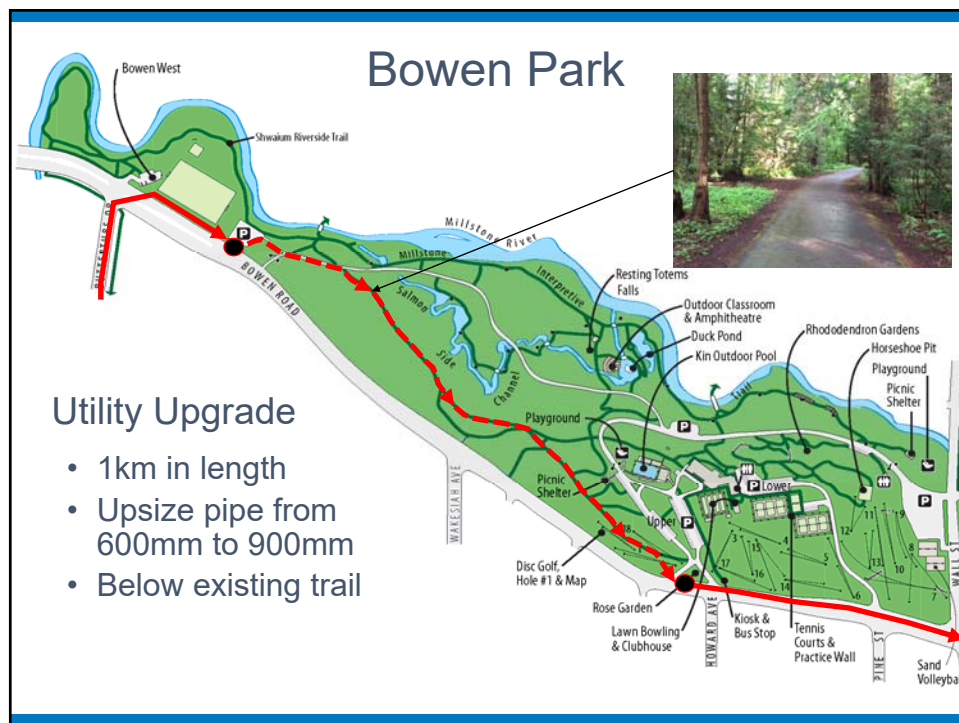
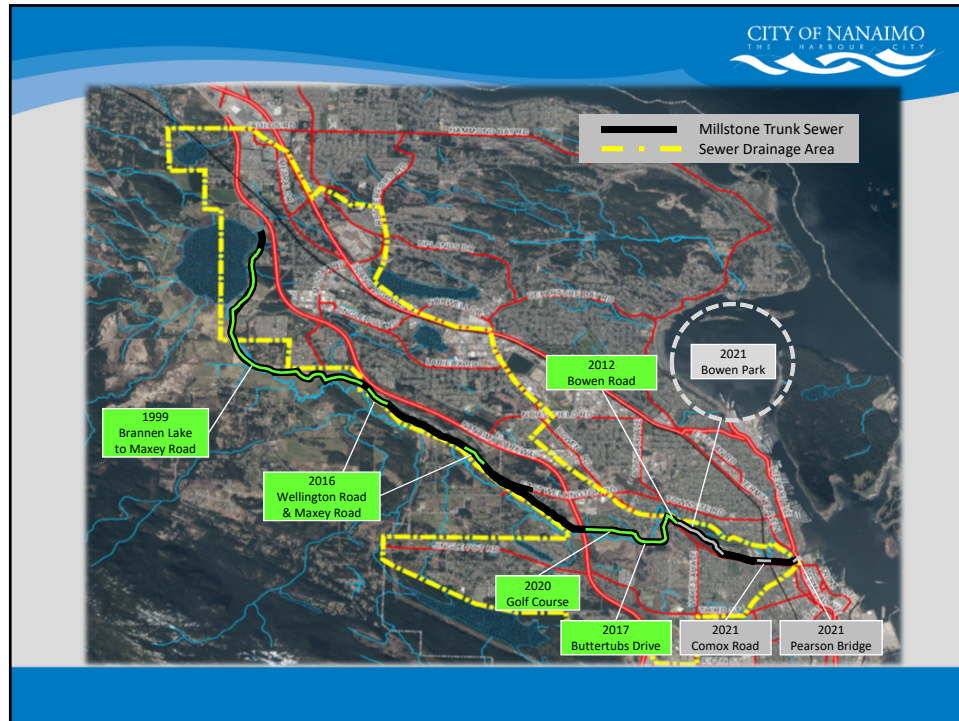


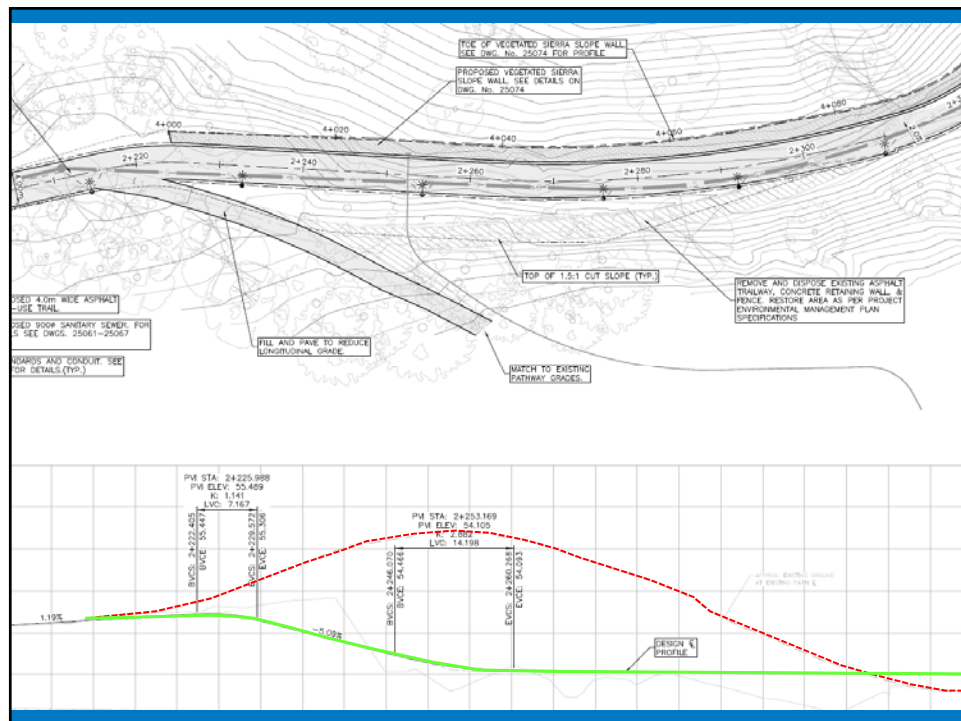
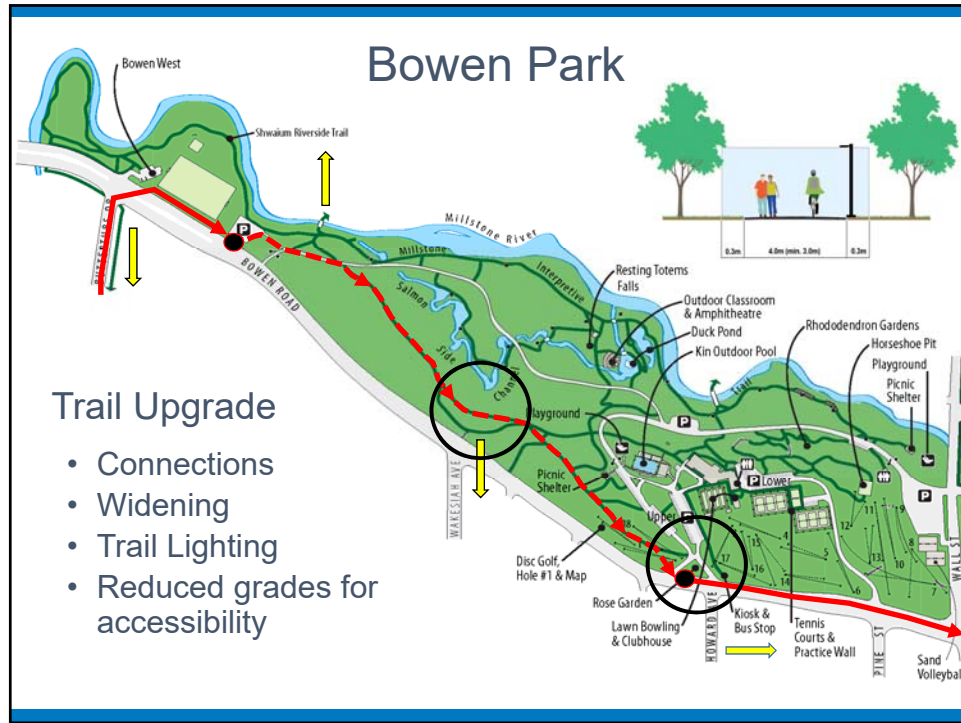
Bowen Park Trailway & Utility Upgrade

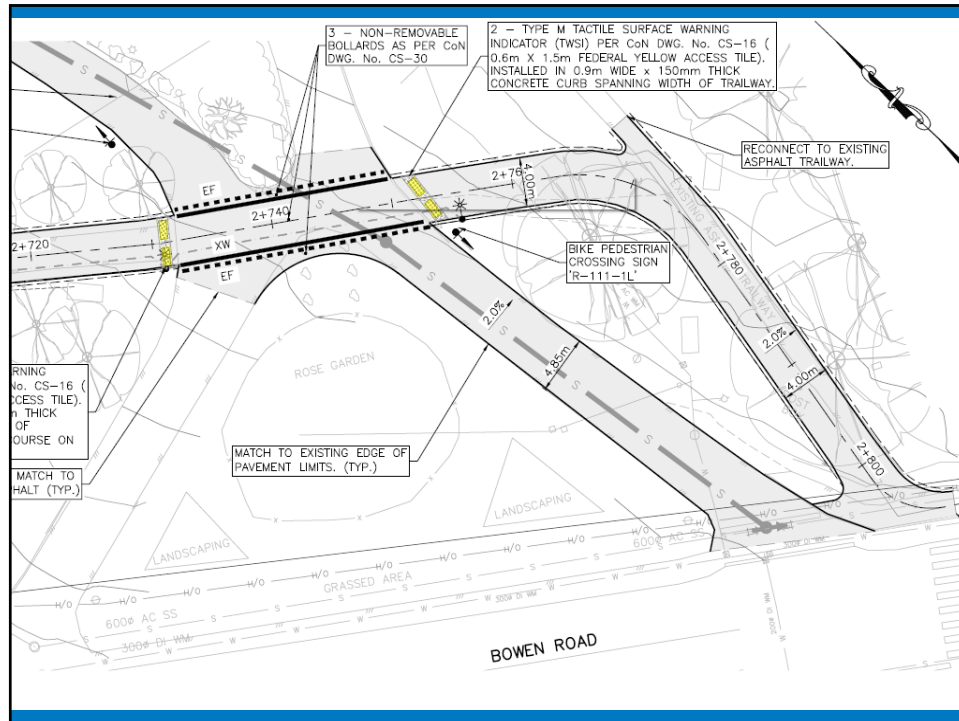


Background

- The Millstone Trunk Sanitary Sewer was built in 1976 & 1977
- Extends from Brannen Lake to Nanaimo Harbour
- Services central Nanaimo
- Capacity planning to address level of service started in late 1990's
- City is progressively upgrading the highest priority sections







Public Information & Consultation

- Council presentation
- Project website
- Neighbourhood groups
- ACAI

PROJECT COMMUNICATION PLAN			
PROJECT DETAILS			
Project Name	Milestone Trunk Sanitary Sewer Upgrade (Phase 2)		
City Project Number	01018	Project Classification	MAJOR
Project Manager	Chris Lang	Project Sponsor	Phil Stewart

Summary Points

- Challenges are environment and community impact
- Tree preservation through alignment considerations and construction methods
- Includes seismic performance upgrades
- Trailway upgrades include widening for safety, softer grades for all ages and abilities, and trail lighting
- Expected to be completed between May to September 2021

