






ACAI - Update on Indicators

2021-APR-28

AGENDA

-  Council/Committee Workshop Highlights
-  Draft City Portrait Indicators
-  Next Steps



Indicators and Targets Workshop Highlights



- ⊙ ~40 Participants (incl. Council + Committees)
- ⊙ Six Facilitated “Zoom Rooms”
- ⊙ 75 Potential Indicators Discussed
- ⊙ 21 Indicators “Upvoted”



Breakout Room Links

ROOM 1: ENABLED

(Economic Health)
jobs, income, tourism, energy
How We Work

ROOM 2: HEALTHY & EMPOWERED

(Environment)
housing, water, food (Governance)
peace, equity, diversity
How We Care

ROOM 3: CONNECTED

(Livability)
mobility, community, neighbourhoods
How We Live & Move

ROOM 4: CONNECTED

(Livability)
well-being, culture
How We Connect, Recreate & Get Outside

ROOM 5a: ECOLOGICAL CEILING

air quality, biodiversity, chemical pollution, climate change
How We Adapt & Stay Green

ROOM 5b: ECOLOGICAL CEILING

land health, ocean health, soil and waterway health, waste, water resources
How We Adapt & Stay Green

COMMUNITY CONNECTION & WELL-BEING

preliminary goal: so everyone has equitable access to opportunities to connect in healthy built and natural environments to support well-being

COMMENTS / QUESTIONS ON THIS GOAL

Background

- 1998 / 2006 Progress Nanaimo measured:
 - Total park area and open space per capita in City and in identified neighbourhoods
 - Proportion of neighbourhood area that is within 800 m of a park or trail
- 2012/2016 Balanced Scorecard measured:
 - Total park area and open space per 1,000 population
 - Total km of trails and open space per 1,000 population
 - Average hours of recreation facilities per 1,000 population
 - participation hours for recreation programs per capita

Post a sticky note

Post a sticky note

Post a sticky note

Proposed REIMAGINE NANAIMO Indicators

INDICATOR	WHAT IT TELLS US	HOW IT'S MEASURED	DISCUSSION QUESTIONS / SUGGESTED MODIFICATIONS	SUSTAINABLE INDICATOR?	VOTING DOTS
1 Public Waterfront Access km and number of publicly accessible waterfront streets Desired trend: increase (see existing report)	<ul style="list-style-type: none"> shows how much publicly accessible waterfront is available, including both saltwater and freshwater locations 	<ul style="list-style-type: none"> km of trail along public waterfront (waterfront walkway and streamside / lakeside trails) # of beach accesses / access points (e.g., docks) measured by City GIS baseline available for waterfront walkway 	<p>type of trail and character of trail</p> <p>post could celebration events? cost of events</p> <p>cool for council to implement Reimagine</p>	<p>Yes</p> <p>No</p> <p>Maybe</p>	<p>Cast a vote by moving one dot to either yes, no, or maybe</p> <p>15</p>
2 Parks / Open Space Distribution % of population within a 500 m (5 minutes) walk to a park / trail Desired trend: increase (2018 Parks, Rec, Culture Report 2018)	<ul style="list-style-type: none"> shows what proportion of neighbourhoods are able to walk to a park or trail indicates geographical equity for parklands and helps understand neighbourhoods that are underserved 	<ul style="list-style-type: none"> % of population within 500 m of walking to park or trail measured by City GIS does not measure the quality of park or trail within access baseline available links to Access to Resources for Neighbourhoods (Table 2) 	<p>use measurement of use and frequency</p> <p>developed a table to show green space</p> <p>Close down streets on a day a week for market type event, not just downtown but in other neighbourhoods</p> <p>Close down main street on a Sunday for a market type event for sense of community</p> <p>greenest connection</p> <p>show for open interpretation events</p>	<p>Yes</p> <p>No</p> <p>Maybe</p>	<p>15</p>
3 Park Area Per Capita ha of park / capita of population Desired trend: maintain (2018 Parks, Rec, Culture Report 2018)	<ul style="list-style-type: none"> shows if there is sufficient park space for current and future community demands access to parkland is important to quality of life 	<ul style="list-style-type: none"> ha of park / capita through GIS analysis as density increases this number will trend downwards, potentially challenging to maintain given limited land available for new acquisitions baseline available 	<p>objective access vs use</p> <p>create spaces to meet needs of all</p> <p>connections and potential groups with expertise to build connections with</p>	<p>Yes</p> <p>No</p> <p>Maybe</p>	<p>15</p>
4 Community Satisfaction introduction to assessing PRC programs, services, and facilities Desired trend: increase (see existing report)	<ul style="list-style-type: none"> shows the social relevance of programs, services, and facilities identifies gaps or changing trends 	<ul style="list-style-type: none"> % of satisfied / very satisfied PRC users through statistically-validated community survey historically performed every 10 years baseline available back to 1994 	<p>add open ended questions to survey</p> <p>No Community... add open ended questions to survey</p> <p>add open ended questions to survey</p> <p>add open ended questions to survey</p>	<p>Yes</p> <p>No</p> <p>Maybe</p>	<p>15</p>



Council/Committee Workshop Highlights



Draft City Portrait Indicators



Next Steps





5 Draft goals are organized around the doughnut – one goal each for the 4 **social** foundations, one for the **ecological** ceiling


- **Healthy**
- **Connected**
- **Enabled**
- **Empowered**
- **Ecological**




5 Draft Goals

- **Healthy** – Support well-being for all
- **Connected** – Build a more sustainable community
- **Enabled** – Promote a thriving economy
- **Empowered** – Encourage social enrichment
- **Ecological** – Protect and enhance our environment








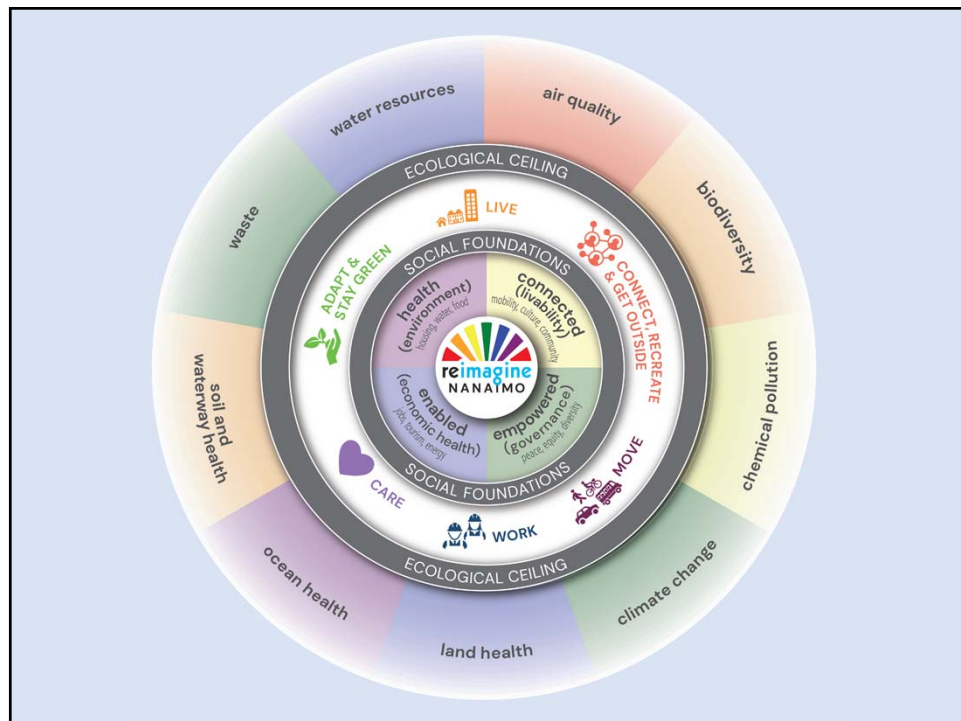
22 Draft Indicators

under the 5 Draft Goals

NOTE: This is an evolving work in progress

- **22 Draft Indicators**

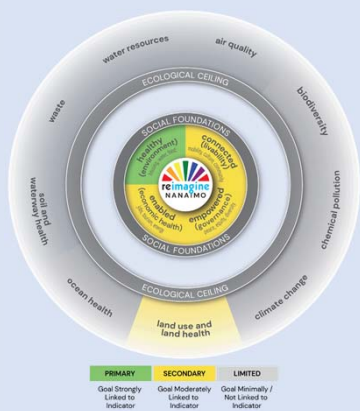







Healthy

Build a more sustainable community
(housing, water, food)



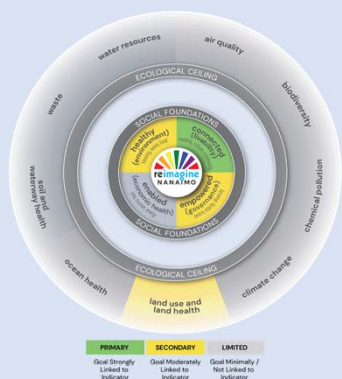
TOP INDICATORS

- Chronic / Episodic Homelessness
- Housing Affordability
- Vacancy Rate
- Mix of Housing Types in Neighbourhoods



Connected

Support access and well-being for all
(mobility, culture, community)



TOP INDICATORS

- Transportation By Mode
- Distance Driven Per Capita
- Access to Daily Needs (includes transit/jobs/services/schools/parks & rec amenities)
- Land Use Mix in Nodes / Corridors
- Public Waterfront Access



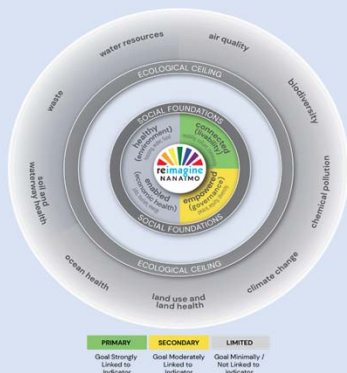


Empowered

Encourage social enrichment
(peace, equity, diversity)

TOP INDICATORS

- Traffic Injury Rate
- Inclusion and Diversity
- Investment in Arts, Culture, and Heritage
- Participation in PRC Programs and Services

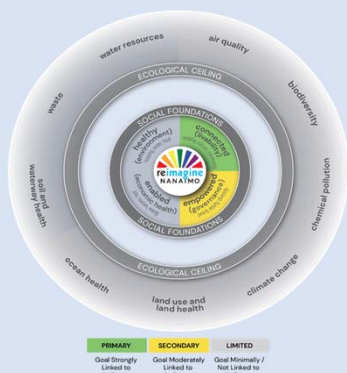


Empowered - Deep Dive -

Inclusion and Diversity

Could be measured through varied potential inputs including:

- # barrier-free facilities
- # of volunteers
- # of LEAP participants
- # KMs accessible trails
- # inclusive playgrounds
- # of capital projects to improve accessibility
- Other ideas?



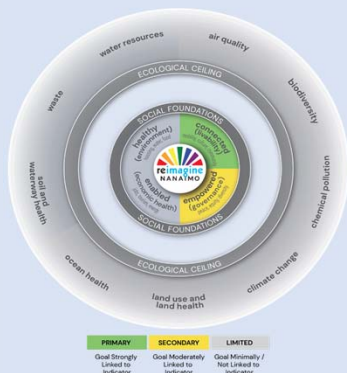


Empowered - Deep Dive -

Investment in Arts, Culture, and Heritage

Could be measured using:

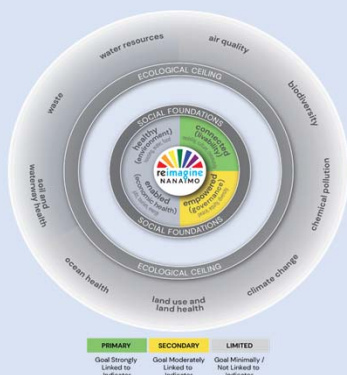
- # of sites on the Heritage Registry
- Number of grants to heritage, arts and culture organizations
- Value and amount of funds leveraged
- Number of grants and property tax exemptions under heritage building conservation programs, value and amount of funds leveraged
- Annual attendance at City-funded events, festivals, culture facilities and related programs
- Investment in public art and creative place-making projects
- **Other ideas?**



Empowered - Deep Dive -

Participation in PRC Programs & Services

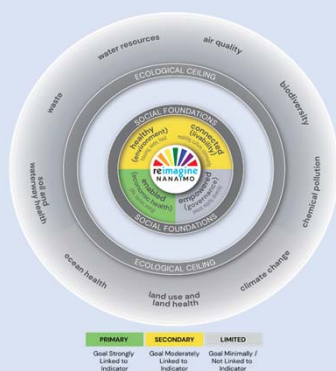
- A variety of methodologies can be used to ensure rigor in the research – i.e., participation rates can be cross-referenced with impact assessments
- Methodologies include: Consultant-led survey; implementation of ongoing program evaluation to collect qualitative data; participation levels as tracked through PerfectMind
- Assessing whether programs and services are considered equitable, inclusive, accessible
- Aim is to know if the programs, services and facilities offered are making a difference to individual and community well-being





Enabled

Promote a thriving economy
(talent, jobs, prosperity)



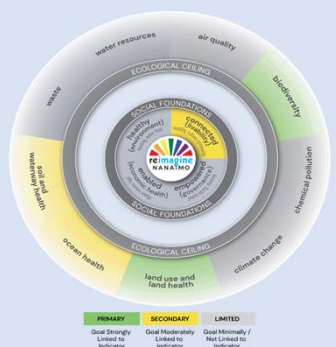
TOP INDICATORS

- Working Age Population
- Non-Residential Building Permits
- Business Growth



Ecological

Protect and enhance our environment
(air quality, biodiversity, chemical pollution, climate change, land use and land health, ocean health, soil and waterway health, waste, water resources)



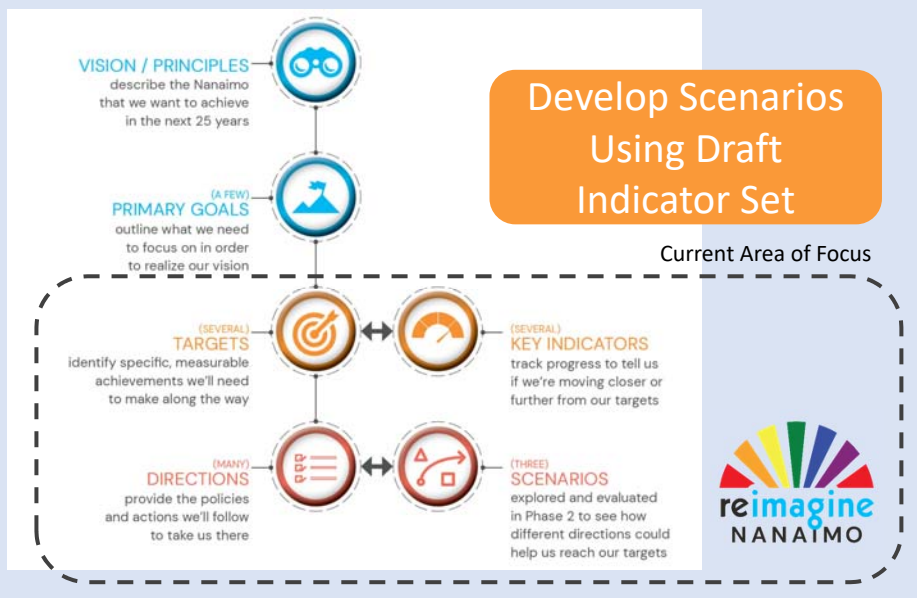
TOP INDICATORS

- GHG Emissions
- Protected Environmentally-Sensitive Areas and Lands
- Surface Water Quality
- Collected Waste / Household
- Water Consumption / Capita





Use Indicators to Evaluate Scenarios



Council/Committee Workshop Highlights

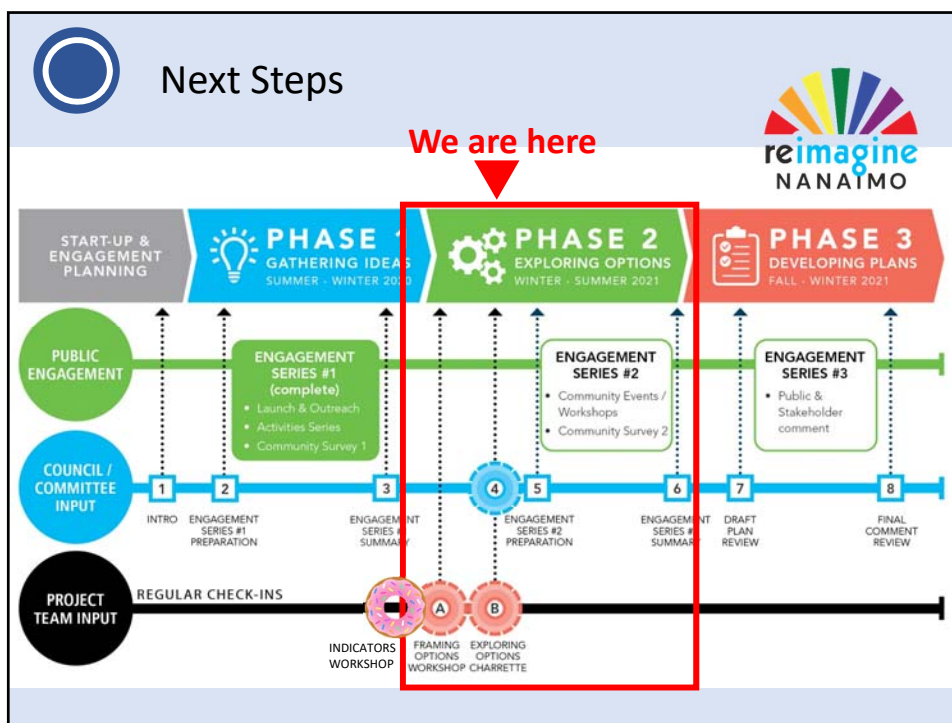


Draft City Portrait Indicators



Next Steps





REIMAGINE ACAI feedback

- **Feedback?**
- **Thoughts on next steps?**
- **Other comments?**



REIMAGINE



"Fun neighbourhood" by Bronwyn Moes, Age 10

Huy tseep q'u Siem

