






DRAFT CITY PORTRAIT

2021-APR-12

AGENDA

-  Update on City Portrait Goals & Indicators
-  Connecting Indicators to Scenarios
-  Next Steps





5 Draft goals are organized around the doughnut – one goal each for the 4 **social** foundations, one for the **ecological** ceiling


- **Healthy**
- **Connected**
- **Enabled**
- **Empowered**
- **Ecological**




5 Draft Goals

- **Healthy** – Support well-being for all
- **Connected** - Build a more sustainable community
- **Enabled** - Promote a thriving economy
- **Empowered** - Encourage social enrichment
- **Ecological** - Protect and enhance our environment




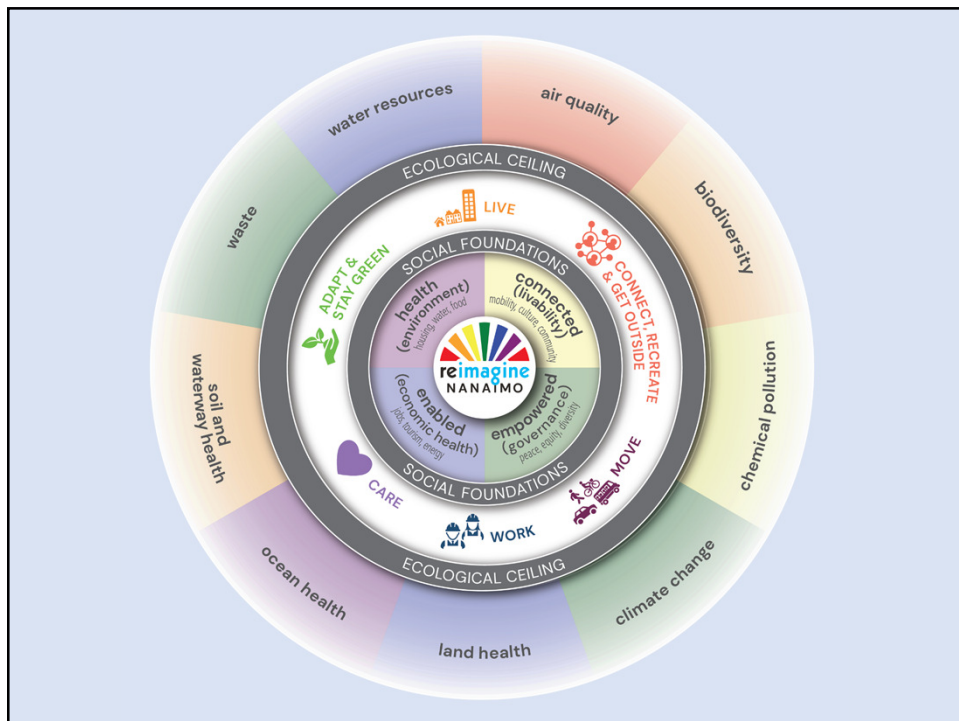



CITY OF NANAIMO
BRITISH COLUMBIA

22 Draft Indicators
under the 5 Draft Goals
NOTE: This is an
evolving work in
progress

- **22 Draft Indicators**

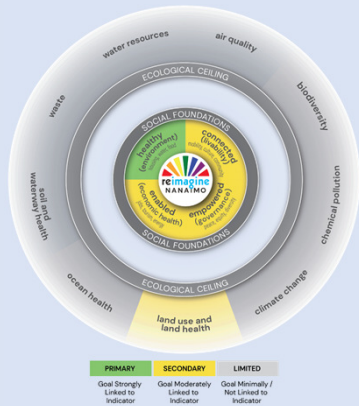






Healthy

Build a more sustainable community
(housing, water, food)



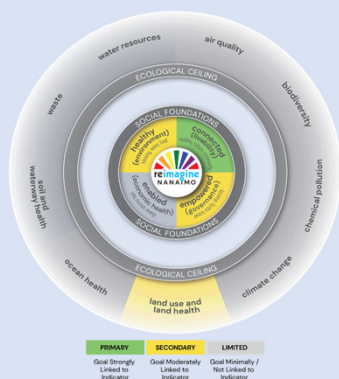
TOP INDICATORS

- Chronic / Episodic Homelessness
- Housing Affordability
- Vacancy Rate
- Mix of Housing Types in Neighbourhoods



Connected

Support access and well-being for all
(mobility, culture, community)



TOP INDICATORS

- Transportation By Mode
- Distance Driven Per Capita
- Access to Daily Needs (includes transit/jobs/services/schools/parks & rec amenities)
- Land Use Mix in Nodes / Corridors
- Public Waterfront Access



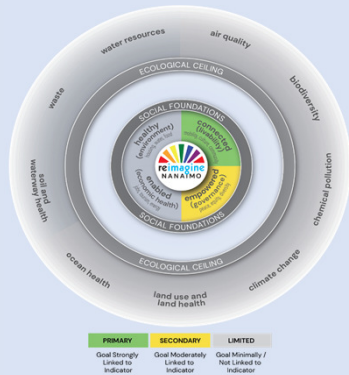


Empowered

Encourage social enrichment
(peace, equity, diversity)

TOP INDICATORS

- Traffic Injury Rate
- Inclusion and Diversity
- Investment in Arts, Culture, and Heritage
- Participation in PRC Programs and Services

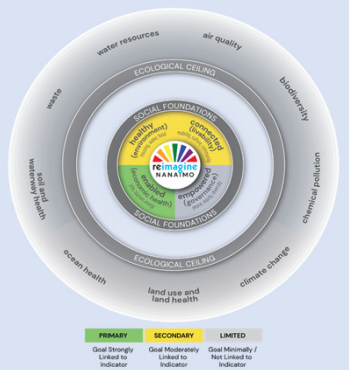


Enabled

Promote a thriving economy
(talent, jobs, prosperity)

TOP INDICATORS

- Working Age Population
- Non-Residential Building Permits
- Business Growth

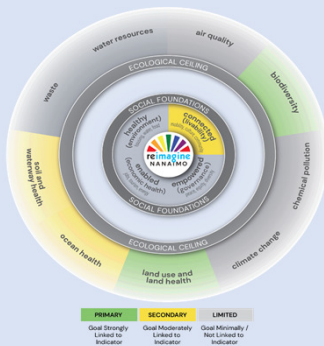




Ecological

Protect and enhance our environment

(air quality, biodiversity, chemical pollution, climate change, land use and land health, ocean health, soil and waterway health, waste, water resources)



TOP INDICATORS

- GHG Emissions
- Protected Environmentally-Sensitive Areas and Lands
- Surface Water Quality
- Collected Waste / Household
- Water Consumption / Capita



Update on City Portrait Goals & Indicators



Connecting Indicators to Scenarios

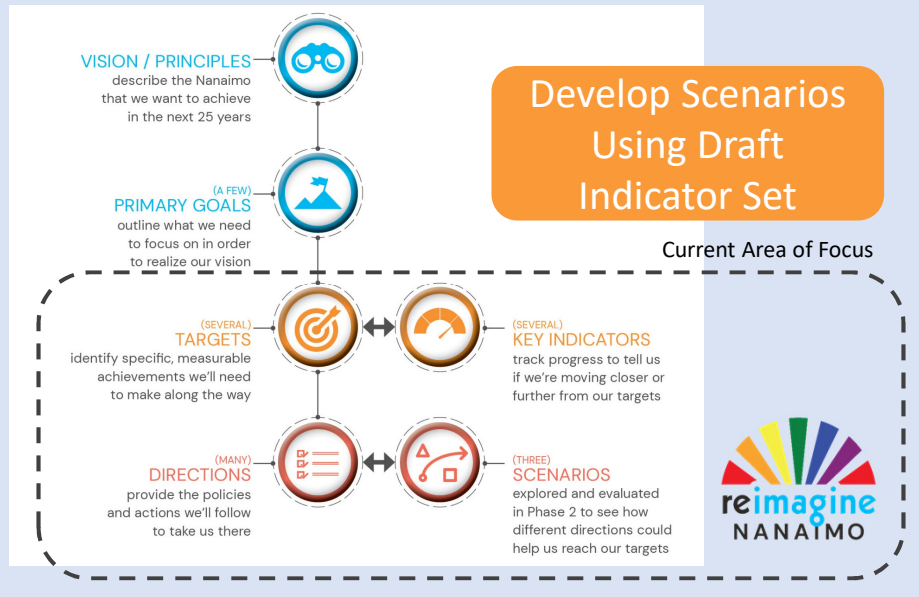


Next Steps





Use Indicators to Evaluate Scenarios



Scenario Development

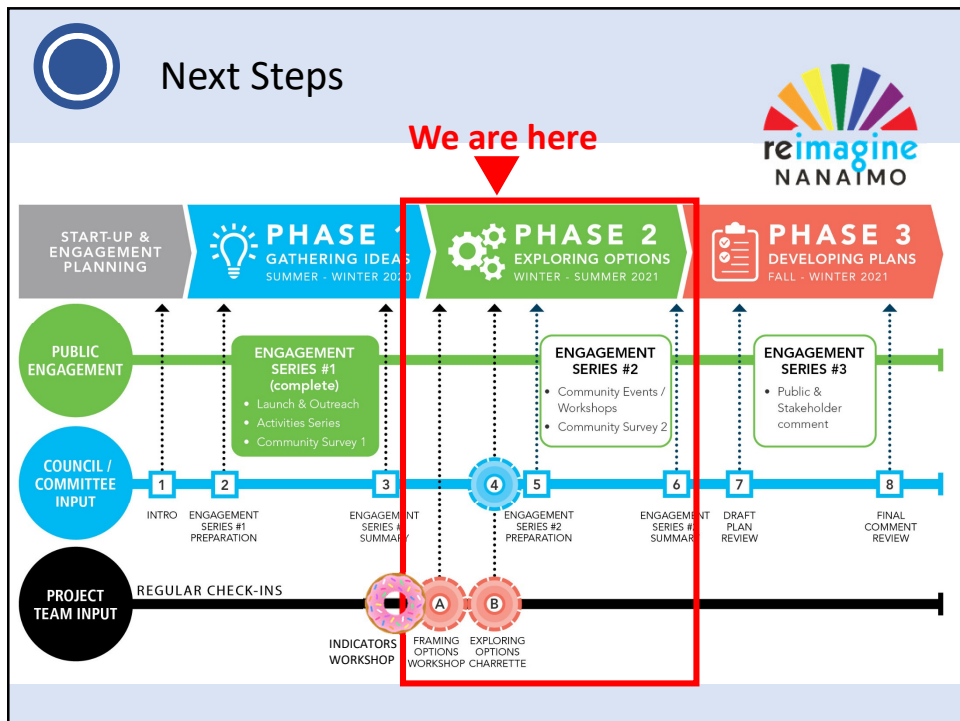
Use Portrait to Develop and Evaluate Scenarios

COUNCIL WORKSHOP APRIL 29



Details TBD based on COVID context





KEY DATES

DRAFT REIMAGINE NANAIMO – 2021-22 MILESTONE CALENDAR

★ Council Updates
★ Council Decisions

★ OCP
Official Community Plan

★ CAP
Climate Action Plan

★ ATP
Active Transportation Plan

★ PRCMP
Parks Rec & Culture Master Plan

★ WSS
Water Supply Strategy

★ EDS
Economic Development Strategy

INTEGRATED PLANNING

PHASE 2 MILESTONES

January	February	March	April	May	June	July	August	Sept
<p>Phase 1 Public Engagement Summary Finalized</p> <p>Base Maps Finalized</p> <p>Staff begin review of indicators for Doughnut Economics City Portrait</p> <p>Feedback from Environment Committee</p>	<p>★ Feb 8 GPC ✓ Phase 1 Engagement Summary Presented</p> <p>★ Feb 22 GPC ✓ Staff discuss milestones and potential project outcomes</p> <p>Ongoing staff review of indicators for Doughnut Economics City Portrait</p>	<p>★ Mar 8 GPC ✓ Preliminary City Portrait & Indicators</p> <p>★ Mar 10 ✓ Targets & Indicators Workshop/Charrette</p> <p>★ Mar 22 GPC ✓ Council to update on Targets & Indicators to Evaluate Scenarios</p> <p>Refine Indicators</p> <p>Model options</p> <p>Staff workshop on exploring options/scenarios</p>	<p>Further model options/scenarios</p> <p>Prepare Phase 2 engagement materials</p> <p>Committees Feedback</p> <p>★ April 26 GPC Council review of preliminary options/scenarios & Plan Framework</p> <p>★ April 29 Council workshop/Charrette on exploring options/scenarios to use for Phase 2 engagement</p>	<p>★ May 10 GPC Prepare & finalize Phase 2 engagement materials</p> <p>Phase 2 online questionnaire launched</p> <p>Phase 2 Statistical Survey mailed out</p> <p>Virtual workshops / at-home activities</p> <p>Ongoing Events & Promotions</p> <p>★ May 31 GPC Updates on Phase 2 engagement</p>	<p>★ Jun 14 GPC ★ Jun 28 GPC Updates on Phase 2 engagement</p> <p>Committees Feedback</p> <p>Ongoing Events & Promotions</p> <p>Virtual workshops conclude</p> <p>Questionnaire closes end of June</p> <p>Drafting Plans</p>	<p>Summary and analysis of Phase 2 findings</p> <p>★ July 12 GPC Update on Phase 2 engagement numbers/ demographics</p> <p>★ July 26 GPC Phase 2 Engagement Summary presented</p> <p>Draft Plans: internal staff review</p> <p>Drafting Plans</p>	<p>No GPC Mtgs</p> <p>Preferred scenarios confirmed</p> <p>Draft Plans refined & reviewed with internal team and Committees</p> <p>Update Climate modelling</p> <p>Preparation of summary of key plan directions and rationale</p> <p>Refining Plans</p>	<p>★ Sept 27 GPC Council review of key plan directions and rationale summary</p> <p>Committees Feedback</p> <p>External Agency Referrals</p> <p>Refining Plans</p>
WSS development synced with land use scenario analysis/modelling, options development, engagement and Council meetings								
<p>Jan 19 - EDS Task Force recommend Council endorse</p> <p>★ Feb 1 Council COMPLETE ✓ EDS Endorsed</p>	<p>Prepare communication and engagement materials</p> <p>Establish Advisory Group</p> <p>List Stakeholders</p> <p>EDS priorities inform development of plan scenarios</p> <p>In house team starts EDS implementation</p> <p>Creation of External Economic Development Corporation</p>	<p>Advisory Mtg #1 Introduce WSS & discuss priorities</p> <p>Advisory Mtg #2 Upgrades Roadmap Virtual Stakeholder meetings</p> <p>Advisory Mtg #3 Virtual Stakeholder meetings</p> <p>Drafting WSS</p>	<p>Summary and analysis of WWS engagement</p> <p>Drafting & Refining WSS</p>	<p>★ Sept 27 GPC Council review as part of key strategic plans</p> <p>Refining WSS</p>	<p>Draft REIMAGINE Plans to link clearly to EDS</p> <p>Implementation of External Economic Development Corporation tasks begin</p>			
EDS and WWS, along with other documents like the Trail Implementation Plan, Culture Plan for a Creative Nanaimo, Various Park Master Plans, Food Security Plan, Health and Housing Action Plan, Age Friendly Plan etc. will inform scenario development/ options for drafting land use and policy directions in integrated plans								

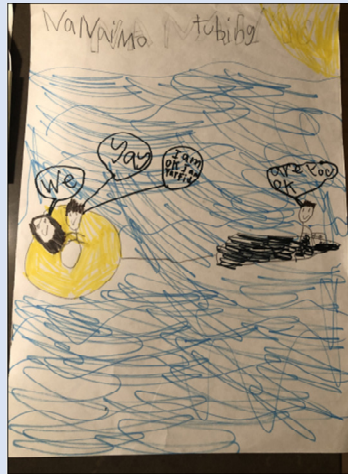
REIMAGINE

Steering Committee feedback

- Feedback?
- Thoughts on next steps?
- Other comments?



REIMAGINE



*Taimani (Grade 3)
completed this
drawing as part
of the KidsPlan
Activity Book*

Huy tseep q'u Siem

