



## UPDATE ON CITY PORTRAIT

2021-MAR-22

## AGENDA

---



Update on March 10 Indicators Workshop



Review Draft Pick of Indicators

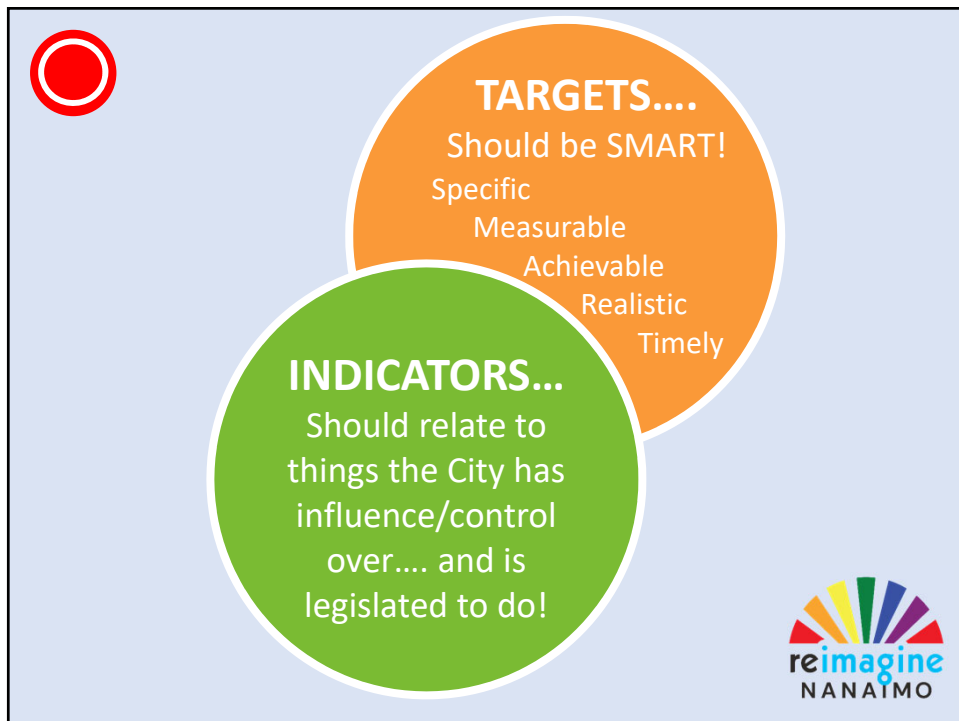
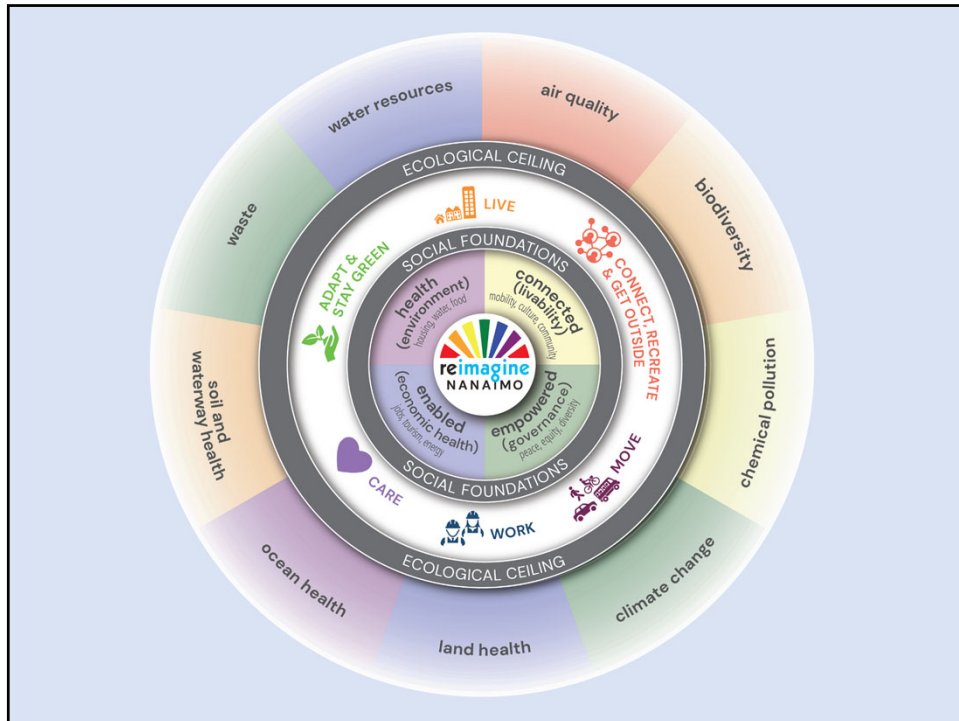


Example of Fully Developed Indicator



Next Steps





# Indicators and Targets Workshop Highlights

- ⊙ ~40 Participants (incl. Council + Committees)
- ⊙ Six Facilitated “Zoom Rooms”
- ⊙ 75 Potential Indicators Discussed
- ⊙ 21 Indicators “Upvoted”



Breakout Room Links		LAND HEALTH / LAND USE		COMMENTS / QUESTIONS ON THIS GOAL	
<b>ROOM 1: ENABLED (Economic Health)</b> jobs, income, tourism, energy <i>How We Work</i>		<b>Background</b> • RGN Regional Growth Strategy measures: • amount of land in protected areas • diversity of land use (land) inside the Urban Containment Boundary • Number of riparian lands (lands) inside the Urban Containment Boundary • Number of parcels with Farm Status • Amount of land designated as Private Managed Forest Land • 1998 / 2006 Progress Nantaimo measures: • land area inside and outside the UCB to riparian boundaries • population inside and outside the UCB • Total area of Forest Resource Land designation • Land use in Rural Resource Land designation		Useful, but there are too many UCBs in the RGS stormwater generated / area of permeable surfaces Find a way to...	
<b>ROOM 2: HEALTHY &amp; EMPOWERED (Environment)</b> housing, water, food (Governance) peace, equity, diversity <i>How We Care</i>		<b>Proposed REIMAGINE NANTAIMO Indicators</b>		Voting Dots: Cast a vote by moving one dot to either yes, no, or maybe	
<b>ROOM 3: CONNECTED (Livability)</b> mobility, community, neighbourhoods <i>How We Live &amp; Move</i>		<b>1 Proportion of 1 ESAs with Protection</b> • identifies the proportion of identified ESAs that are / are not protected • ESA include: • Coastal Bluff • Wetlands • Watercourse / Riparian • Terrestrial herbaceous • Older second growth forest Desired trend: maintain / increase No existing report	• % of protected ESAs • through GIS analysis • may consider different levels of protection (e.g., parks vs. private lands protection) • some baseline data from 1998 / 2006 available	<b>Discussion, Questions, Suggested Modifications</b> Cultural component hand in hand with environmental riparian area vs actual We need to regenerate land as we develop, daylight rivers, protect, expand and connect natural areas	Suitable Indicator? Yes No Maybe
<b>ROOM 4: CONNECTED (Livability)</b> well-being, culture <i>How we Connect, Recreate &amp; Get Outside</i>		<b>2 Area of Protected Lands</b> • tells us how much land in total is within a protected area designated by the federal, provincial, or local government Desired trend: maintain / increase No existing report	• % of protected ESAs • through GIS analysis • With limited undeveloped land in the City, indicator is unlikely to shift much more. City's role in land protection at the regional level may be more critical • Baseline: 1,785 ha (2019) an increase from 1,687 ha (2018)	Recruit citizens and grey areas regenerate land We need to regenerate land as we develop, daylight rivers, protect, expand and connect natural areas	Suitable Indicator? Yes No Maybe
<b>ROOM 5a: ECOLOGICAL CEILING (Livability)</b> air quality, biodiversity, chemical pollution, climate change <i>How We Adapt &amp; Stay Green</i>		<b>3 Land Inside / Outside UCB</b> • helps to track where new growth and population is occurring with respect to the urban containment boundary Proportion of land area and population inside and outside the urban containment boundary Desired trend: growth focused inside UCB No existing report	• ha inside / outside UCB • population inside / outside UCB • already being monitored for RGN Regional Growth Strategy	Responsible growth can still happen (and is supported in existing policy) within the UCB	Suitable Indicator? Yes No Maybe
<b>ROOM 5b: ECOLOGICAL CEILING</b> land health, ocean health, soil and waterway health, waste, water resources <i>How We Adapt &amp; Stay Green</i>		<b>4 Diversity of Land Use in UCB</b> • helps to understand the mix of land uses being developed within the urban containment boundary Diversity of land use per square km inside the Urban Containment Boundary Desired trend: increasing diversity No existing report	• ratio of land uses • through GIS analysis • no baseline identified	Maybe a useful item: Land outside the UCB that can support local agricultural production for food security. Flip this one around a bit. e.g. determine rural/forestry land areas outside UCB	Suitable Indicator? Yes No Maybe



## Next Steps for Indicators/Targets to Create City Portrait

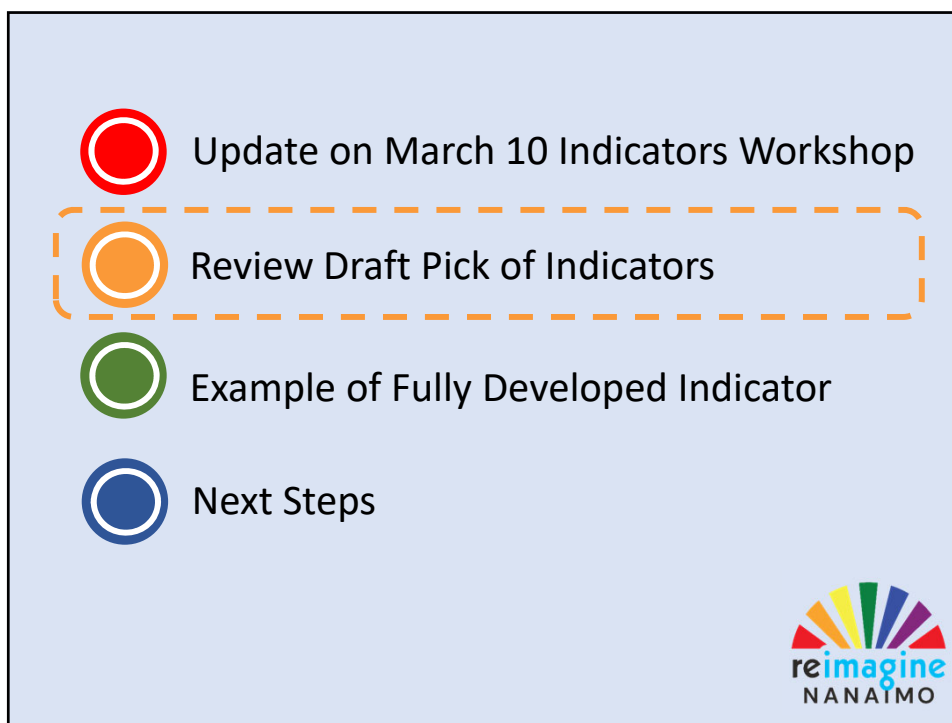


Step 4: Council  
Endorsement

Step 3: Confirm  
Measurement Process

Step 2: Identify/Confirm Baselines

Step 1: Review of workshop results and  
further refine draft Indicators (Staff and  
Technical Advisors)



<b>ROOM 1: ENABLED</b> → (Economic Health) jobs, income, tourism, energy <i>How We Work</i>	Non-Residential Building Permits Working Age Population Per Capita Non-Renewable Energy Use
<b>ROOM 2: HEALTHY &amp; EMPOWERED</b> → (Environment) housing, water, food (Governance) peace, equity, diversity <i>How We Care</i>	Chronic/Episodic Homelessness Income Spent on Housing
<b>ROOM 3: CONNECTED</b> → (Livability) mobility, community, neighbourhoods <i>How We Live &amp; Move</i>	# of Households within 400m of essential services/transit/schools Transportation by Mode Distance Driven per Capita Land Use Mix in Nodes/Corridors Mix of Housing Types in Neighbourhood
<b>ROOM 4: CONNECTED</b> → (Livability) well-being, culture <i>How we Connect, Reconnect &amp; Get Outside</i>	Park Area Per Capita and Parks and/or Open Space Distribution Community Satisfaction of PRC facilities and services Increased public waterfront access Inclusive services
<b>ROOM 5a: ECOLOGICAL CEILING</b> → air quality, biodiversity, chemical pollution, climate change <i>How We Adapt &amp; Stay Green</i>	GHG Emissions Proportion of ESA with protection Area of protected lands Surface water quality
<b>ROOM 5b: ECOLOGICAL CEILING</b> → land health, ocean health, soil and waterway health, waste, water resources <i>How We Adapt &amp; Stay Green</i>	Collected Waste / Household Water consumption per capita



Update on March 10 Indicators Workshop



Review Draft Pick of Indicators



Example of Fully Developed Indicator



Next Steps



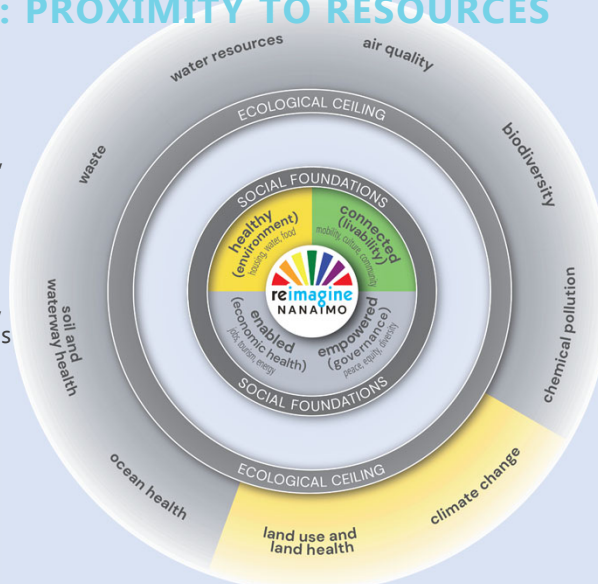
## INDICATOR #1: PROXIMITY TO RESOURCES

### WHAT IT MEASURES

# of households within 400m of employment lands, shopping, schools, transit, and recreation

### WHAT IT TELLS US

- how compact, complete, and connected the City is
- potential for accessing services within walking or cycling distance
- equity of access to services for neighbourhoods throughout the City



■ Goal Strongly Linked to Indicator  
■ Goal Moderately Linked to Indicator  
■ Goal Minimally / Not Linked to Indicator



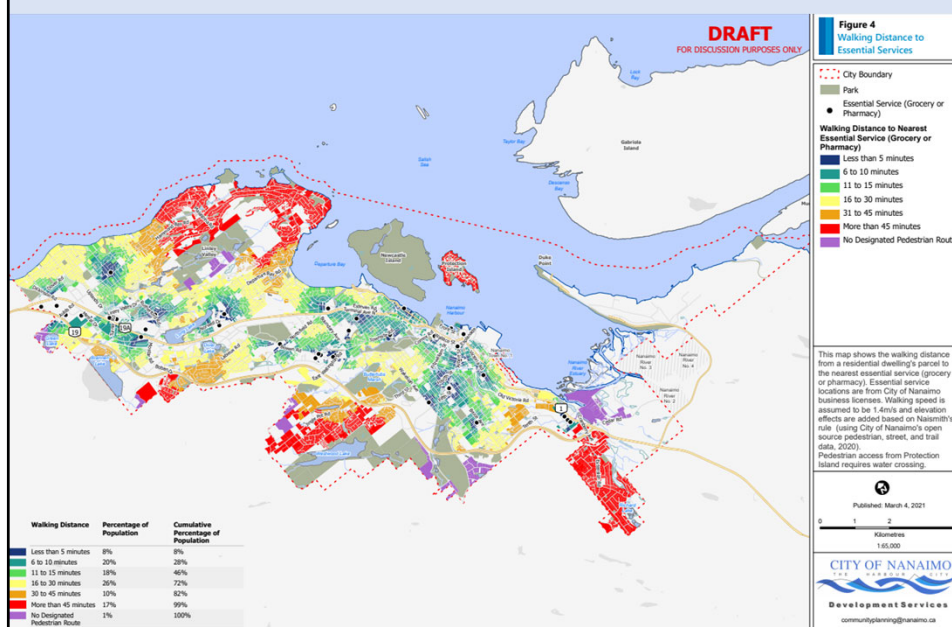


## Why is this a strong indicator?

- ☐ Provides key insights across connected City policy areas: Land Use and Mobility, Housing Affordability, Equitable access to community amenities (Parks, Recreation, Employment, Services), and Environment/Climate Change
- ☐ Data reliable and readily available
- ☐ Lower cost for monitoring (staff time)
- ☐ Aligns with RGS monitoring



## Sample Base Map for Grocery/Pharmacy Access



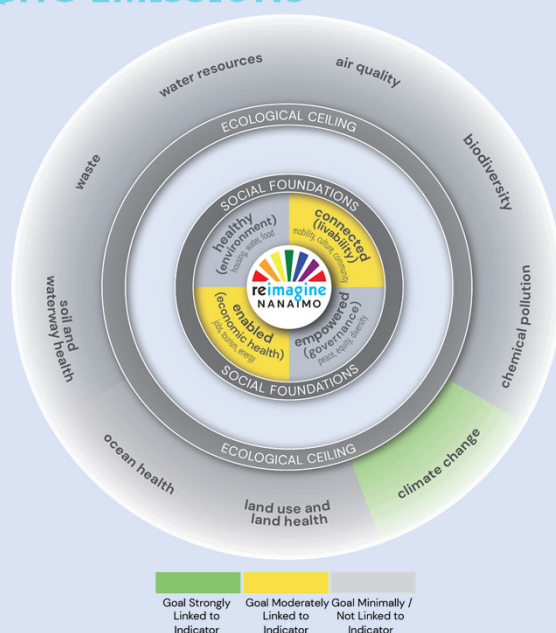
## INDICATOR #2: GHG EMISSIONS

### WHAT IT MEASURES

Total community greenhouse gas emissions (tCO<sub>2</sub>e)

### WHAT IT TELLS US

- How close we are to meeting goal of reducing community-wide emissions to between 50% and 58% below 2010 levels by 2030, and between 94% and 107% below 2010 levels by 2050
- Signals as to whether existing policies are on the right track

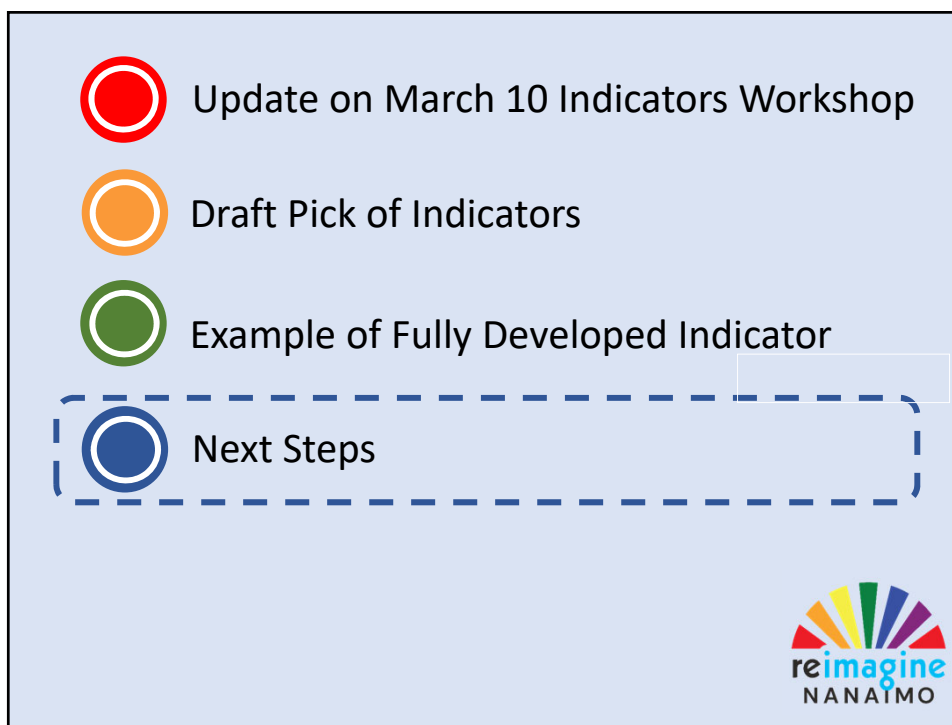
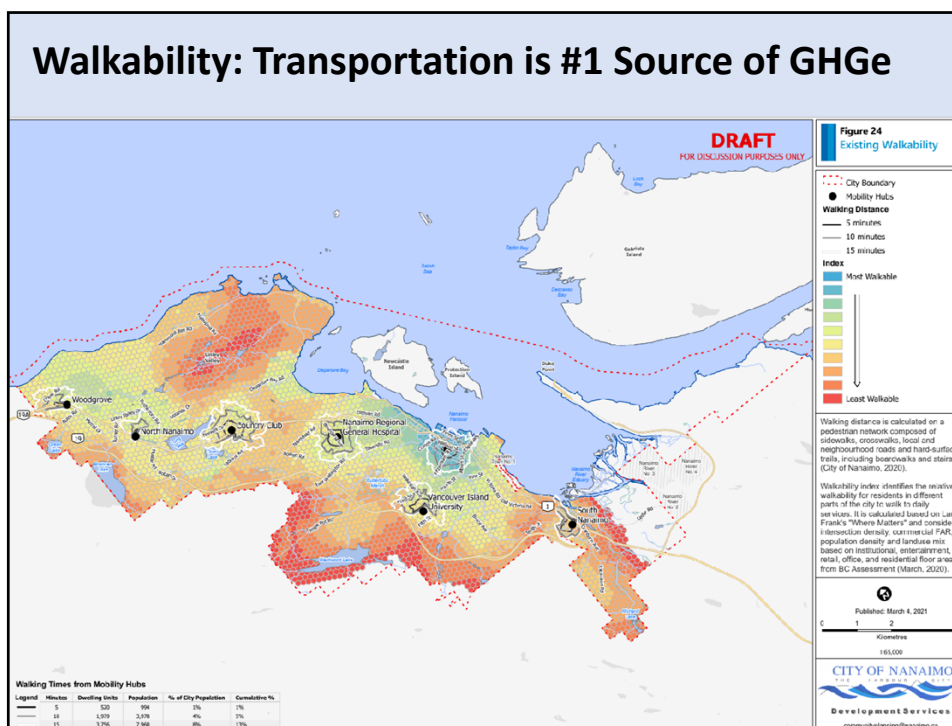


### Why is this a strong indicator?

- ☐ Critical to measuring whether we are exceeding environmental “ceiling”
- ☐ Aligns with RDN RGS Monitoring
- ☐ Data free and collected by Province of BC (required interpretation/analysis)
- ☐ Good data reliability (5-year updates with interpolation possible in interim)

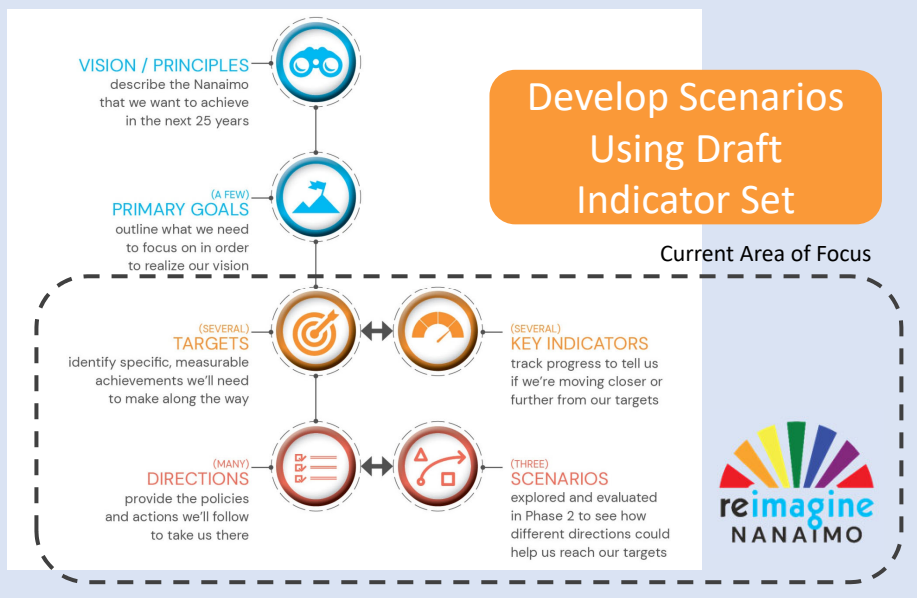






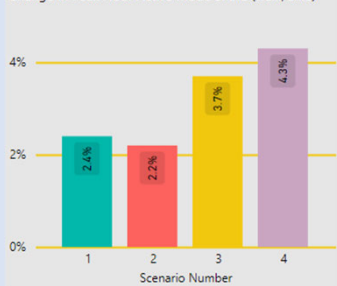


## Next Steps – Scenario Development

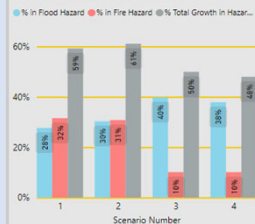


## Scenario Development – Kelowna (OCP Only)

Change in Peak Hour Active Mode Share (walk/bike)



New Growth in Hazard Areas (%)



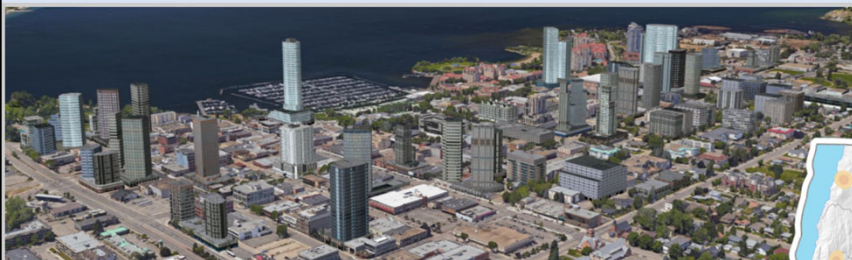
Account	Scenario 1	Scenario 2	Scenario 3	Scenario 4
Agricultural Protection	1	2	3	4
Financially Resilient	1	2	3	4
Growing Economy	3	3	4	4
Growth Management	1	2	3	4
Health and Safety	2	2	4	4
Livable Communities	2	3	3	3
Mitigate Climate Change	2	2	3	4
Travel Choices	2	1	3	4
<b>Total</b>	<b>14</b>	<b>17</b>	<b>26</b>	<b>31</b>

Growth within 400m of Neighbourhood Services (%)





## Scenario Development – Kelowna Example



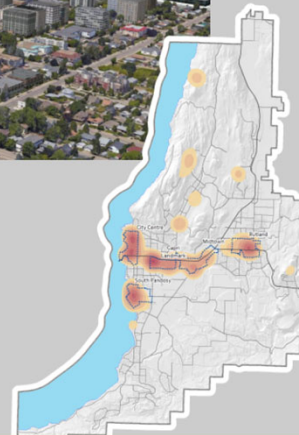
### Visualizing Future Growth - Scenario 4 (Rapid Shift / Focus Urban Centres)

This scenario relies most heavily on compact, higher-density housing (apartments and condos) in the urban centres (for e.g. Downtown, Pandosy and Rutland). There will be very little new development in low-density, single-detached housing development. By focusing future growth in the urban centres it will be easier to enhance walking, cycling and transit options within the urban core. By focusing growth in the urban centres there is a greater opportunity for targeted and cost-effective infrastructure investments that will benefit existing communities in the urban core.

To achieve this scenario a significant change in course will be needed, as it sets more ambitious targets for multi-family development in our urban centres and lower targets for low-density development at the periphery of the city.

**New Housing Types:** 90% multi-family as apartments and condos / 10% single-family

**Overall Housing Types:** (including existing) 55% multi-family / 45% single-family



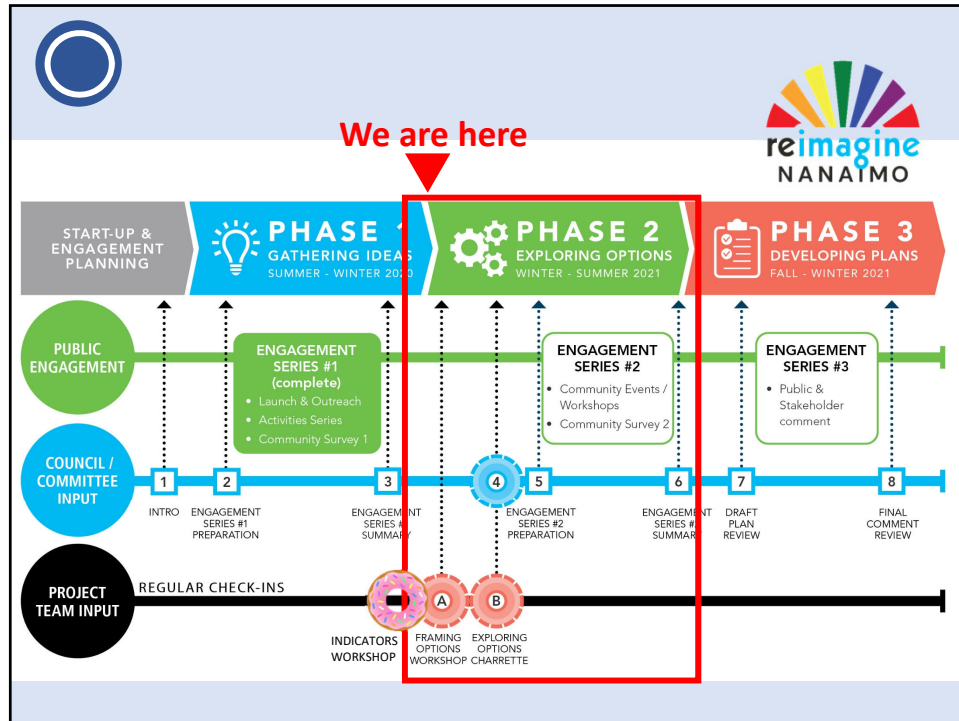
## Next Steps – Scenario Development

**Use Portrait to Develop  
and Evaluate Scenarios**  
**COUNCIL WORKSHOP APRIL 29**



**To Prepare for  
PHASE 2 Community  
Engagement**





KEY DATES		DRAFT REIMAGINE NANAIMO – 2021-22 MILESTONE CALENDAR									
		PHASE 2 MILESTONES									
		January	February	March	April	May	June	July	August	Sept	
<b>INTEGRATED PLANNING</b> 	★ Council Updates ★ Council Decisions	Phase 1 Public Engagement Summary Finalized Base Maps Finalized Staff begin review of indicators for Doughnut Economics City Portrait <b>Feedback from Environment Committee</b>	★ Feb 8 GPC ✓ Phase 1 Engagement Summary Presented ★ Feb 22 GPC ✓ Staff discuss milestones and potential project outcomes Ongoing staff review of indicators for Doughnut Economics City Portrait	★ Mar 8 GPC ✓ Preliminary City Portrait & Indicators ★ Mar 10 ✓ Targets & Indicators Workshop/Charrette ★ Mar 22 GPC ✓ Council to update on Targets & Indicators to Evaluate Scenarios Refine Indicators Model options Staff workshop on exploring options/scenarios	Further model options/scenarios Prepare Phase 2 engagement materials <b>Committees Feedback</b> ★ April 26 GPC Council review of preliminary options/scenarios & Plan Framework ★ April 29 Council workshop/Charrette on exploring options/scenarios to use for Phase 2 engagement	★ May 10 GPC Prepare & Finalize Phase 2 engagement materials Phase 2 online questionnaire launched Phase 2 Statistical Survey mailed out Virtual workshops / at-home activities Ongoing Events & Promotions ★ May 31 GPC Updates on Phase 2 engagement	★ Jun 14 GPC ★ Jun 28 GPC Updates on Phase 2 engagement <b>Committees Feedback</b> Ongoing Events & Promotions Virtual workshops conclude Questionnaire closes end of June <b>Drafting Plans</b>	Summary and analysis of Phase 2 findings ★ July 12 GPC Update on Phase 2 engagement numbers/demographics ★ July 26 GPC Phase 2 Engagement Summary presented Draft Plans: Internal staff review <b>Drafting Plans</b>	No GPC Mtgs Preferred scenarios confirmed Draft Plans refined & reviewed with internal team and Committees Update Climate modelling Preparation of summary of key plan directions and rationale <b>Refining Plans</b>	★ Sept 27 GPC Council review of key plan directions and rationale summary <b>Committees Feedback</b> External Agency Referrals <b>Refining Plans</b>	
		WSS development synced with land use scenario analysis/modelling, options development, engagement and Council meetings									
		Jan 19 - EDS Task Force recommend Council endorse	★ Feb 1 Council COMPLETE EDS Endorsed	Establish Advisory Group List Stakeholders EDS priorities inform development of plan scenarios In house team starts EDS implementation Creation of External Economic Development Corporation	Advisory Mtg #1 Introduce WSS & discuss priorities	Advisory Mtg #2 Upgrades Roadmap Virtual Stakeholder meetings	Advisory Mtg #3 Virtual Stakeholder meetings <b>Drafting WSS</b>	Summary and analysis of WWS engagement <b>Drafting &amp; Refining WSS</b>		★ Sept 27 GPC Council review as part of key strategic plans and rationale <b>Refining WSS</b>	
		EDS and WWS, along with other documents like the Trail Implementation Plan, Culture Plan for a Creative Nanaimo, Various Park Master Plans, Food Security Plan, Health and Housing Action Plan, Age Friendly Plan etc. will inform scenario development/ options for drafting land use and policy directions in integrated plans									

# REIMAGINE

## Steering Committee feedback

- Feedback?
- Thoughts on next steps?
- Other comments?



# REIMAGINE



*"Fun neighbourhood" by Bronwyn Moes, Age 10*

Huy tseep q'u Siem

