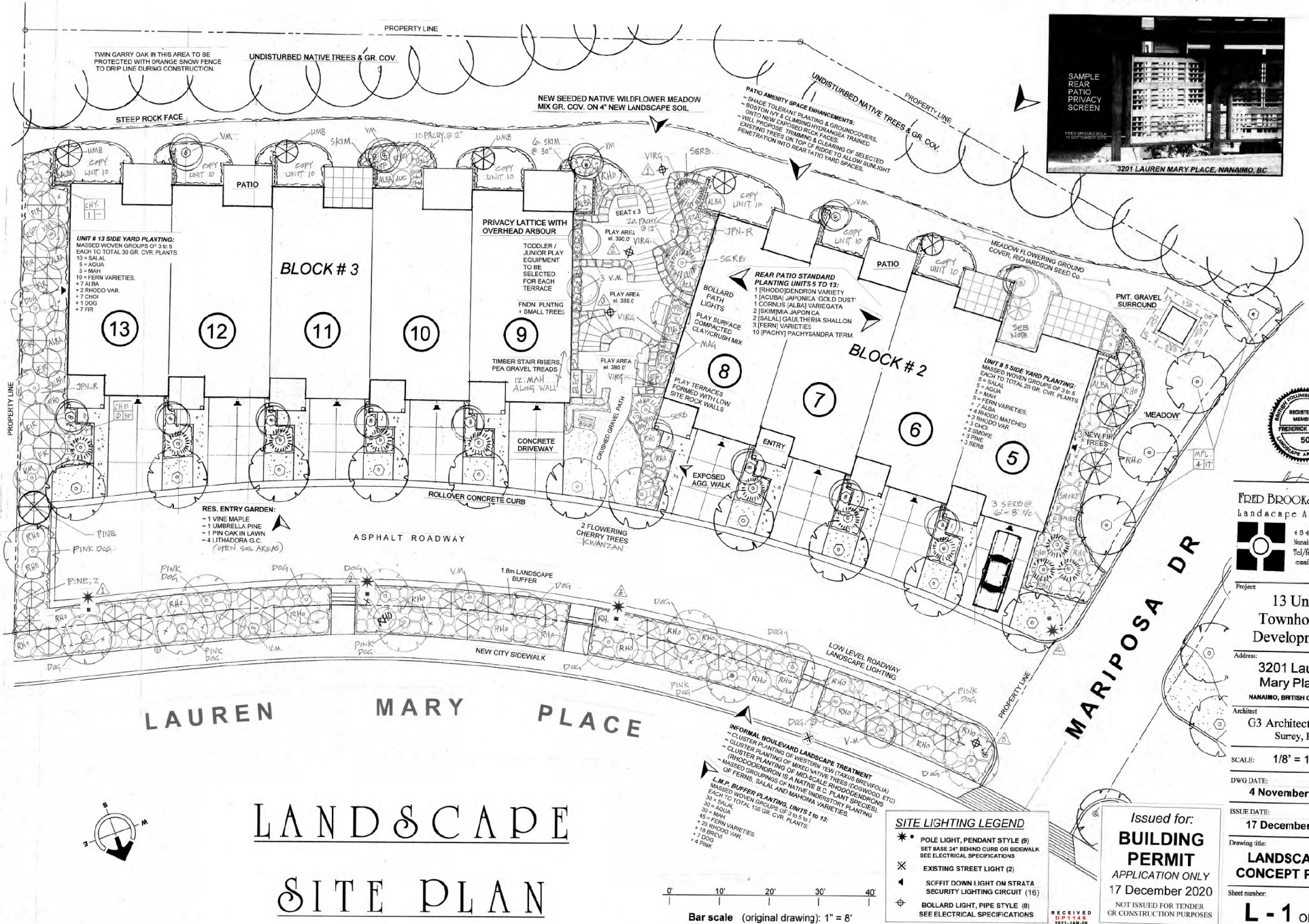
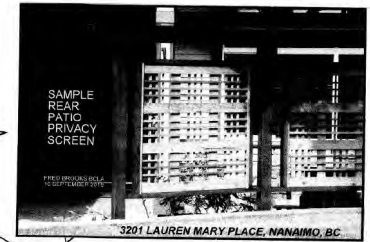


ATTACHMENT G LANDSCAPE PLAN AND DETAILS

REVISED AND REISSUED FOR DEVELOPMENT PERMIT - FINAL
DECEMBER 21, 2020



FRED BROOKS DCSA CMA
Landscape Architect

4045 Legana Way
Nanaimo, B.C. V9T 5C2
Tel/Fax: 780 751 0950
email: f.brooks@telus.net

Project
**13 Unit
Townhouse
Development**

Address:
**3201 Lauren
Mary Place
NANAIMO, BRITISH COLUMBIA**

Architect
**G3 Architecture Inc.
Surrey, B.C.**

SCALE: **1/8" = 1' (Orig.)**

DWG DATE:
4 November 2020

ISSUE DATE:
17 December 2020

Drawing title:
**LANDSCAPE
CONCEPT PLAN**

Sheet number:
L - 1 OF 2

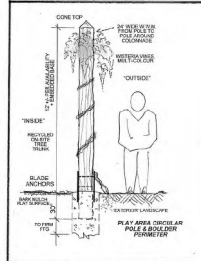
Issued for:
**BUILDING
PERMIT
APPLICATION ONLY**
17 December 2020
NOT ISSUED FOR TENDER
OR CONSTRUCTION PURPOSES

SITE LIGHTING LEGEND

- ★ POLE LIGHT, PENDANT STYLE (9)
SET BASE 24" BEHIND CURB OR SIDEWALK
SEE ELECTRICAL SPECIFICATIONS
- ✕ EXISTING STREET LIGHT (2)
- ▲ SOFFIT DOWN LIGHT ON STRATA
SECURITY LIGHTING CIRCUIT (16)
- ⊕ BOLLARD LIGHT, PIPE STYLE (8)
SEE ELECTRICAL SPECIFICATIONS

PATIO AMENITY SPACE ENHANCEMENTS:

- SHADE TOLERANT PLANTING & GROUNDCOVERS.
- BOSTON IVY & CLIMBING HYDRANGEA TRAINED ONTO NEW EXPOSED ROCK FACES.
- VILL PROPOSED TRIMMING & CLEARING OF SELECTED EXISTING TREES ON TOP OF RIDGE TO ALLOW SUNLIGHT PENETRATION INTO REAR PATIO YARD SPACES.



LANDSCAPE SPECIFICATION

- 1) - Plant material to conform to current BCNTA/BCSLA Guide Spec'n for Nursery stock.
- 2) - Landscape Contractor shall be responsible to locate all underground services prior to any excavation by referencing available soil drawings (by others) or 'Call First' line at 1-800-474-6866.
- 3) - Landscape Contractor to provide seven days notice to Landscape Architect prior to commencement of landscape site work to allow for site meeting and drawing review, especially regarding possible building architect change orders and non-conforming construction details.
- 4) - Landscape Contractor shall ensure that all slopes or paved surfaces which may slope or direct surface water into a landscape area shall not collect or puddle in a soil area but be directed and removed to an acceptable dispersment or drainage area via a surface swale or French drain.
- 5) - Planting soil for tree wells shall be structurally and nutritionally capable of encouraging healthy vigorous plant growth. pH shall range from 5.5 to 7.5.
- 6) - Grass areas (turf or seed) shall have 5" new soil base. Shrub planting areas shall have 16" new soil base. New trees shall have 12" (300 mm) of new soil around and below the root ball. Tree hole excavations shall drain immediately (field test) to prevent root rot, suffocation and drowning. Hardpan subgrade shall be fractured or trenched to an approved run-off destination before topsoil placement.
- 7) - If B&B, cut all cords and peel back or cut away B&B sacking and trunk wrap.
- 8) - Apply 'Acer' slow release pellet fertilizer over all planting areas per manufacturer's instructions before applying mulch. 2" of approved landscape mulch over planting areas.
- 9) - Stake all trees to 6 foot height (1.8m) with approved wood or steel stakes and non-abrasive and non-constricting ties. Nursery post stakes are not acceptable.
- 10) - Install approved tree stem bark protectors (Arborguard or equal) on all trees in grass or turf areas which will be at risk of weed-aider type tools, lawnmower strikes, and deer or rodents.
- 11) - Remove all nursery marker flags but leave on plant name tags.
- 12) - All plant material shall be guaranteed in writing to the owner for one year against death due to unhealthy supply and/or improper installation conditions and/or wrong selection of species or variety or plants. One year period begins at date of Landscape Contractor's final invoice.

Landscape Contractor: _____ Date: _____

RETENTION POND PLANTING:
 #1 - HEDEIRA COL. DENT. VAREGATA 25 @ 24" c/c
 #2 - BLUE YELLOW FRS. MIXED BANDS 80 @ 24" c/c
 #3 - RUDECKIA (BLACK EYE SUSAN) 25 @ 24" c/c
 #4 - AZALEA KIMPHILL 30 @ 24" c/c

AUTOMATIC LANDSCAPE IRRIGATION SPECIFICATION

WORKMANSHIP

The objective is to supply the required amount of water to the landscape planting / soil areas for the successful establishment and continued health of all existing and new plant material without under-watering, over-watering or missed spot watering due to either design, parts or installation factors, timing controls or blockage or screening by existing or new plant material structures or site grading & contours. It is recommended that the bidder carefully review the site and bid documents and base his price on the overall intent of the drawings and these specifications.

The responsibility of an acceptable operating system rests solely with the on-site installer of the system, and not the designer, unless they are the same party.

Therefore, compliance with or deviation from any drawings is not an acceptable reason for lack of owner's acceptance of part or all of the system when it is charged & declared operational. The landscape irrigation contractor/installer shall ensure the delivery of a fully functional system with all trees and plants receiving adequate water for a healthy landscape.

All system to be single manufacturer brand, TORO quality or approved equal. Be aware that the use of thin wall piping is usually not a savings for the owner in the long run. Selection & use of optimum materials and best workmanship methods in the beginning will usually result in a quality job, avoiding call-backs and plant failure problems when plant material is under landscape's warranty. Note on your bid what wall thickness & brand of piping you are proposing to use, as this will be confirmed at installation.

1.2 - Locate all U/G control valve boxes in convenient but unobtrusive locations.

1.3 - I.C. shall ensure that all new trees receive not less than 4 litres of water daily during summer growing season, and more water if subject to dry, hot or wind desiccating environment.

1.4 - Irrig. Contr. shall provide two sets of "as-built" irrigation drawings and specifications to owner prior to acceptance of system, and provide one copy of manufacturer's control station manual to owner and leave one copy securely attached to controller in clear protective case.

1.5 - Irrig. Contractor shall provide one year warranty on workmanship and all parts of the system from date of first operational start-up of the system, with confirming letter to owner.

1.6 - A signed/dated copy of this spec. shall be attached to your quote.

1.7 - I.C. _____ Date: _____

* ALL NEW LANDSCAPE ON AUTO-IRRIGATION FROM WITHIN PROPERTY LINES INCLUDING CITY BOULEVARD GROUND COVER

LAUREN MARY PLACE, NANAIMO, BC									
21 November, 2024									
PENG PROPOSED BCIA									
LANDSCAPE PLANTING PLANS L-1, L-2 PLANT LIST									
BOTANICAL NAME					COMMON NAME				
KEY	QTY	SYMBOL	TRADE	COMMON NAME	ORNL				
SPRING / DECEMBER									
1	1	1	1	Acacia saligna	1				
2	1	2	2	Acacia saligna	2				
3	1	3	3	Acacia saligna	3				
4	1	4	4	Acacia saligna	4				
5	1	5	5	Acacia saligna	5				
6	1	6	6	Acacia saligna	6				
7	1	7	7	Acacia saligna	7				
8	1	8	8	Acacia saligna	8				
9	1	9	9	Acacia saligna	9				
10	1	10	10	Acacia saligna	10				
11	1	11	11	Acacia saligna	11				
12	1	12	12	Acacia saligna	12				
13	1	13	13	Acacia saligna	13				
14	1	14	14	Acacia saligna	14				
15	1	15	15	Acacia saligna	15				
16	1	16	16	Acacia saligna	16				
17	1	17	17	Acacia saligna	17				
18	1	18	18	Acacia saligna	18				
19	1	19	19	Acacia saligna	19				
20	1	20	20	Acacia saligna	20				
21	1	21	21	Acacia saligna	21				
22	1	22	22	Acacia saligna	22				
23	1	23	23	Acacia saligna	23				
24	1	24	24	Acacia saligna	24				
25	1	25	25	Acacia saligna	25				
26	1	26	26	Acacia saligna	26				
27	1	27	27	Acacia saligna	27				
28	1	28	28	Acacia saligna	28				
29	1	29	29	Acacia saligna	29				
30	1	30	30	Acacia saligna	30				
31	1	31	31	Acacia saligna	31				
32	1	32	32	Acacia saligna	32				
33	1	33	33	Acacia saligna	33				
34	1	34	34	Acacia saligna	34				
35	1	35	35	Acacia saligna	35				
36	1	36	36	Acacia saligna	36				
37	1	37	37	Acacia saligna	37				
38	1	38	38	Acacia saligna	38				
39	1	39	39	Acacia saligna	39				
40	1	40	40	Acacia saligna	40				
41	1	41	41	Acacia saligna	41				
42	1	42	42	Acacia saligna	42				
43	1	43	43	Acacia saligna	43				
44	1	44	44	Acacia saligna	44				
45	1	45	45	Acacia saligna	45				
46	1	46	46	Acacia saligna	46				
47	1	47	47	Acacia saligna	47				
48	1	48	48	Acacia saligna	48				
49	1	49	49	Acacia saligna	49				
50	1	50	50	Acacia saligna	50				
51	1	51	51	Acacia saligna	51				
52	1	52	52	Acacia saligna	52				
53	1	53	53	Acacia saligna	53				
54	1	54	54	Acacia saligna	54				
55	1	55	55	Acacia saligna	55				
56	1	56	56	Acacia saligna	56				
57	1	57	57	Acacia saligna	57				
58	1	58	58	Acacia saligna	58				
59	1	59	59	Acacia saligna	59				
60	1	60	60	Acacia saligna	60				
61	1	61	61	Acacia saligna	61				
62	1	62	62	Acacia saligna	62				
63	1	63	63	Acacia saligna	63				
64	1	64	64	Acacia saligna	64				
65	1	65	65	Acacia saligna	65				
66	1	66	66	Acacia saligna	66				
67	1	67	67	Acacia saligna	67				
68	1	68	68	Acacia saligna	68				
69	1	69	69	Acacia saligna	69				
70	1	70	70	Acacia saligna	70				
71	1	71	71	Acacia saligna	71				
72	1	72	72	Acacia saligna	72				
73	1	73	73	Acacia saligna	73				
74	1	74	74	Acacia saligna	74				
75	1	75	75	Acacia saligna	75				
76	1	76	76	Acacia saligna	76				
77	1	77	77	Acacia saligna	77				
78	1	78	78	Acacia saligna	78				
79	1	79	79	Acacia saligna	79				
80	1	80	80	Acacia saligna	80				
81	1	81	81	Acacia saligna	81				
82	1	82	82	Acacia saligna	82				
83	1	83	83	Acacia saligna	83				
84	1	84	84	Acacia saligna	84				
85	1	85	85	Acacia saligna	85				
86	1	86	86	Acacia saligna	86				
87	1	87	87	Acacia saligna	87				
88	1	88	88	Acacia saligna	88				
89	1	89	89	Acacia saligna	89				
90	1	90	90	Acacia saligna	90				
91	1	91	91	Acacia saligna	91				
92	1	92	92	Acacia saligna	92				
93	1	93	93	Acacia saligna	93				
94	1	94	94	Acacia saligna	94				
95	1	95	95	Acacia saligna	95				
96	1	96	96	Acacia saligna	96				
97	1	97	97	Acacia saligna	97				
98	1	98	98	Acacia saligna	98				
99	1	99	99	Acacia saligna	99				
100	1	100	100	Acacia saligna	100				

FRED BROOKS DCSA CMA
Landscape Architect
4845 Laguna Way
Nanaimo, B.C. V9T 2C2
Tel/Fax: 250.751.0950
Email: fbrooks@evc.ca

Project:
**13 Unit
Townhouse
Development**

Address:
**3201 Lauren
Mary Place
NANAIMO, BRITISH COLUMBIA**

Architect:
**G3 Architecture Inc.
Surrey, B.C.**

SCALE: **1/8" = 1' (Orig.)**

DWG DATE: **4 November 2020**

ISSUE DATE: **17 December 2020**

Drawing title: **LANDSCAPE
CONCEPT PLAN**

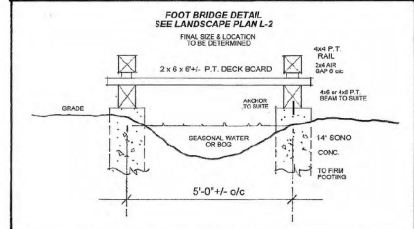
Sheet number: **L - 2 OF 2**

Issued for:
**BUILDING
PERMIT
APPLICATION ONLY**
17 December 2020
NOT ISSUED FOR TENDER
OR CONSTRUCTION PURPOSES

BAR SCALE
0' 5' 10' 15' 20' 25' 30' 35' 40'

ORIGINAL DRAWING SCALE: 1" = 8 Feet

REVISED AND REISSUED FOR DEVELOPMENT PERMIT - FINAL
DECEMBER 21, 2020

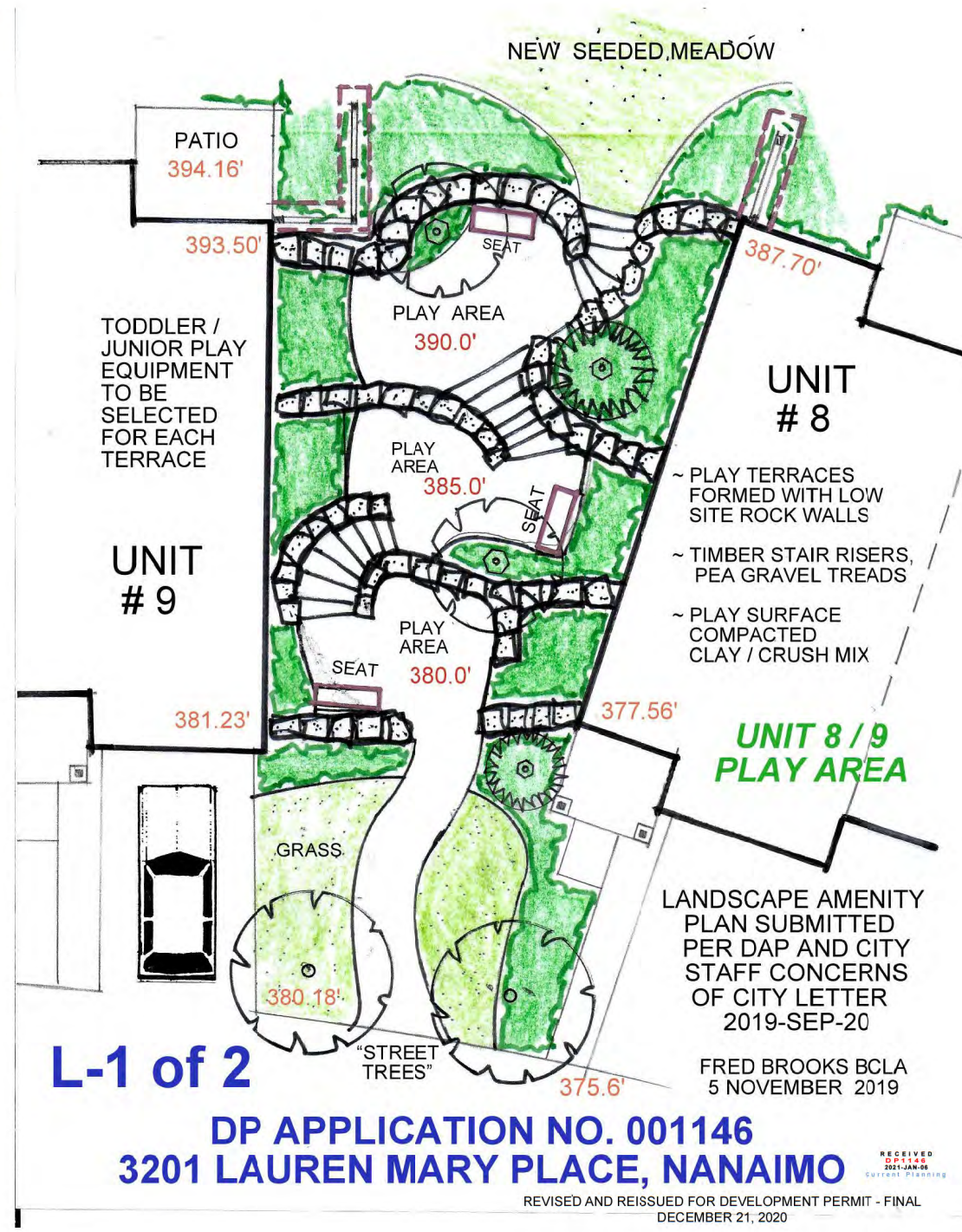


MARIPOSA DRIVE

LAUREN MARY PLACE



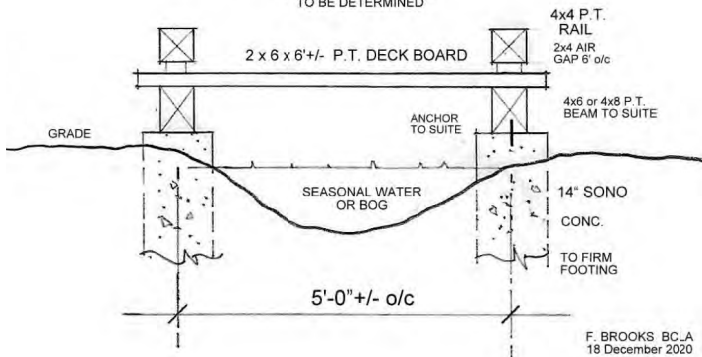
F. BROOKS BCLA
18 December 2020



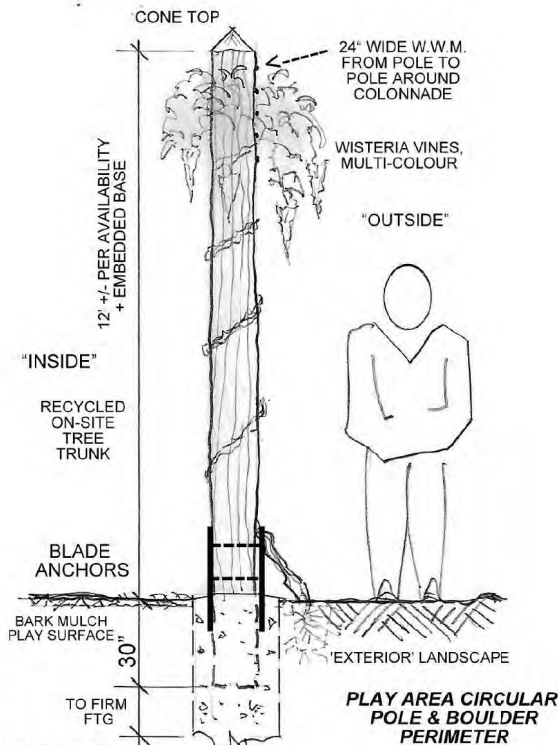
3201 LAUREN MARY PLACE, NANAIMO, BC

FOOT BRIDGE DETAIL SEE LANDSCAPE PLAN L-2

FINAL SIZE & LOCATION
TO BE DETERMINED

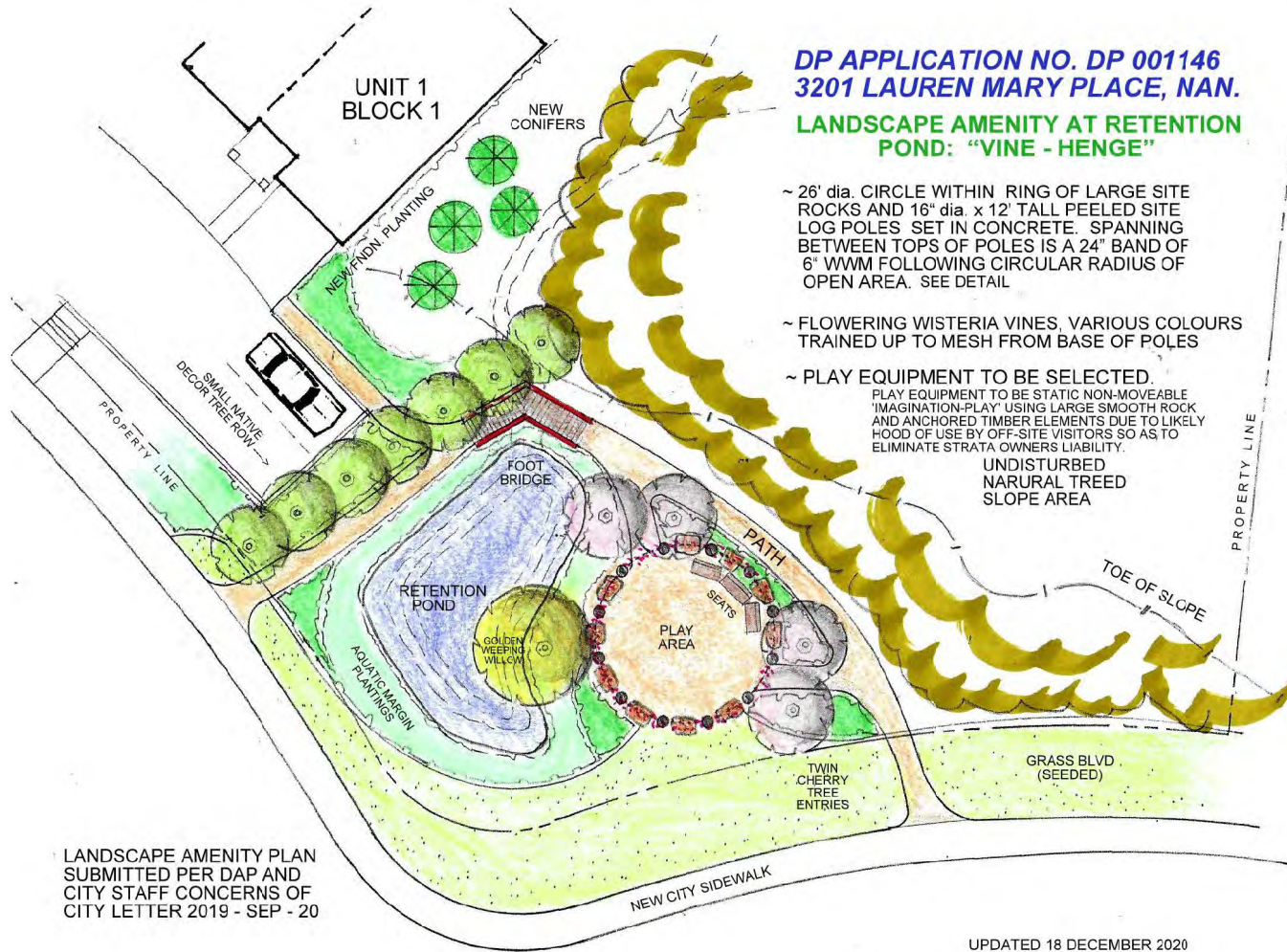


F. BROOKS BCL.A
18 December 2020



F. BROOKS BCL.A
18 December 2020

3201 LAUREN MARY PLACE, NANAIMO



DP APPLICATION NO. DP 001146 3201 LAUREN MARY PLACE, NAN.

LANDSCAPE AMENITY AT RETENTION POND: "VINE - HEDGE"

~ 26' dia. CIRCLE WITHIN RING OF LARGE SITE ROCKS AND 16" dia. x 12' TALL PEELED SITE LOG POLES SET IN CONCRETE. SPANNING BETWEEN TOPS OF POLES IS A 24" BAND OF 6" WWM FOLLOWING CIRCULAR RADIUS OF OPEN AREA. SEE DETAIL

~ FLOWERING WISTERIA VINES, VARIOUS COLOURS TRAINED UP TO MESH FROM BASE OF POLES

~ PLAY EQUIPMENT TO BE SELECTED. PLAY EQUIPMENT TO BE STATIC NON-MOVEABLE 'IMAGINATION-PLAY' USING LARGE SMOOTH ROCK AND ANCHORED TIMBER ELEMENTS DUE TO LIKELY HOOD OF USE BY OFF-SITE VISITORS SO AS TO ELIMINATE STRATA OWNERS LIABILITY.

UNDISTURBED NATURAL TREED SLOPE AREA

GRASS BLVD (SEEDED)

UPDATED 18 DECEMBER 2020

REVISED AND REISSUED FOR DEVELOPMENT PERMIT - FINAL
DECEMBER 21, 2020

RECEIVED
DP 1146
2021-JAN-06
Current Planning