

ATTACHMENT E BUILDING ELEVATIONS AND DETAILS



1 NORTH EAST ELEVATION - PART a
Scale: 1/8" = 1'-0"

ELEVATION NOTE:
1.] C.O.D. SHOWN
2.] ELEVATIONS DRAWN PERPENDICULAR TO WALL FACE.

MATERIAL LEGEND:

- FP1 Fiber Cement Panel (White)
- FP2 Fiber Cement Panel (Grey)
- CN1 Concrete
- CN2 Dark Grey Stained Concrete
- CN3 Phenolic Concrete
- CN4 Board Formed Concrete
- MT1 Metal Flashing (White)
- MT2 Metal Flashing (Grey)
- WD1 T&G Cedar Wall and Soffit (Natural)
- AL1 Aluminum Grille Doors - (Grey)
- VW1 Vinyl Window (White)
- VW2 Vinyl Window (Grey)
- GW1 Coarsest Grid (Grey)
- G1 Aluminum & Glass Quastrol (Grey)
- GC Coloured Panel



RECEIVED
DP 1192
2020-OCT-20
Current Planning



1 NORTH EAST ELEVATION - PART B
Scale: 1/8" = 1'-0"

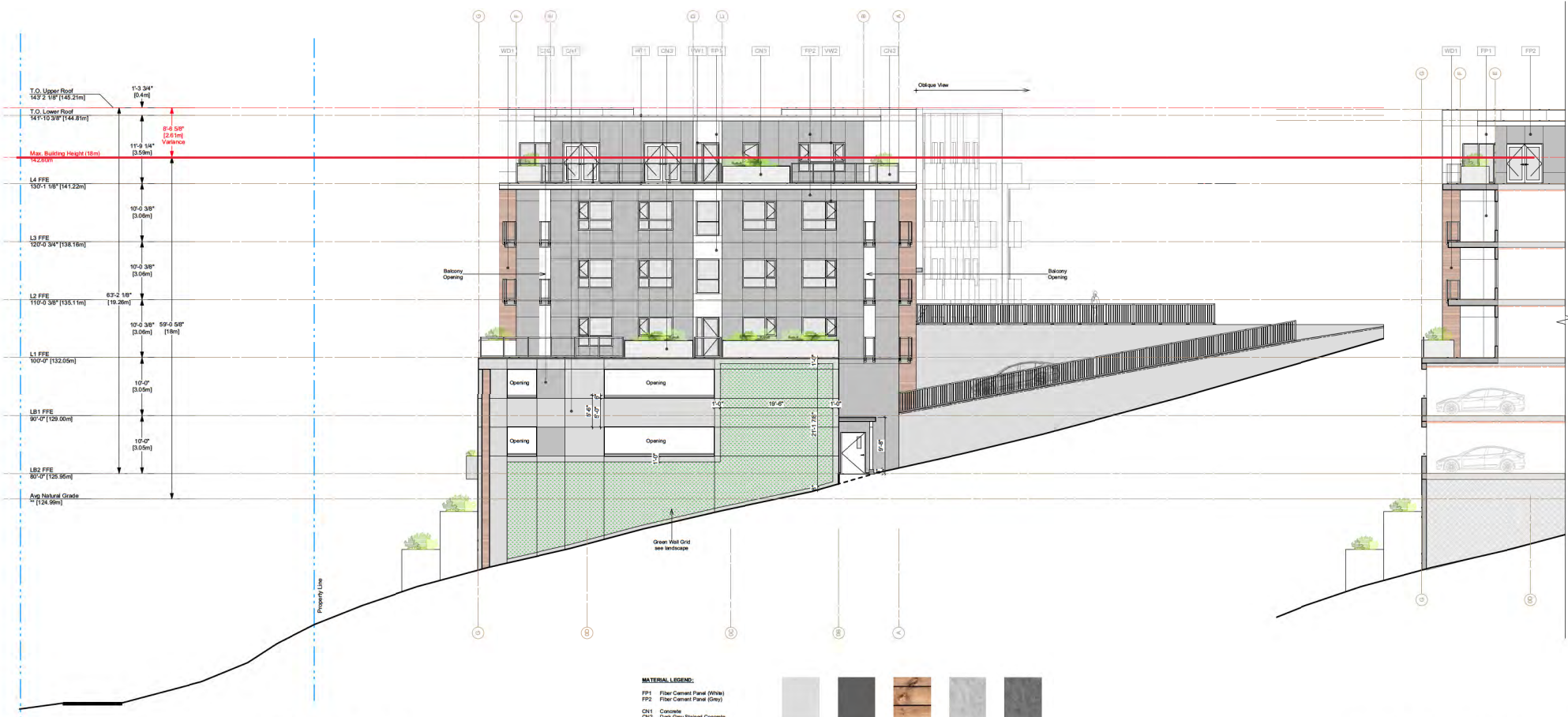
ELEVATION NOTE
1) C.J. = COLD JOINT
2) ELEVATIONS DRAWN PERPENDICULAR TO WALL FACE.

MATERIAL LEGEND:

- FP1 Fiber Cement Panel (White)
- FP2 Fiber Cement Panel (Grey)
- CN1 Concrete
- CN2 Dark Grey Stained Concrete
- CN3 Phenolic Concrete
- CN4 Board Formed Concrete
- MT1 Metal Flashing (White)
- MT2 Metal Flashing (Grey)
- WD1 T&G Cedar Wall and Soffit (Natural)
- AL1 Aluminum Grille Doors - (Grey)
- VW1 Vinyl Window (White)
- VW2 Vinyl Window (Grey)
- GW1 Gravelled Grid (Grey)
- G1 Aluminum & Glass Quardrail (Grey)
- GC Coloured Panel



RECEIVED
D.P. 1105
2020-OCT-20
Current Planning



1 SOUTH EAST ELEVATION
Scale: 1/8" = 1'-0"

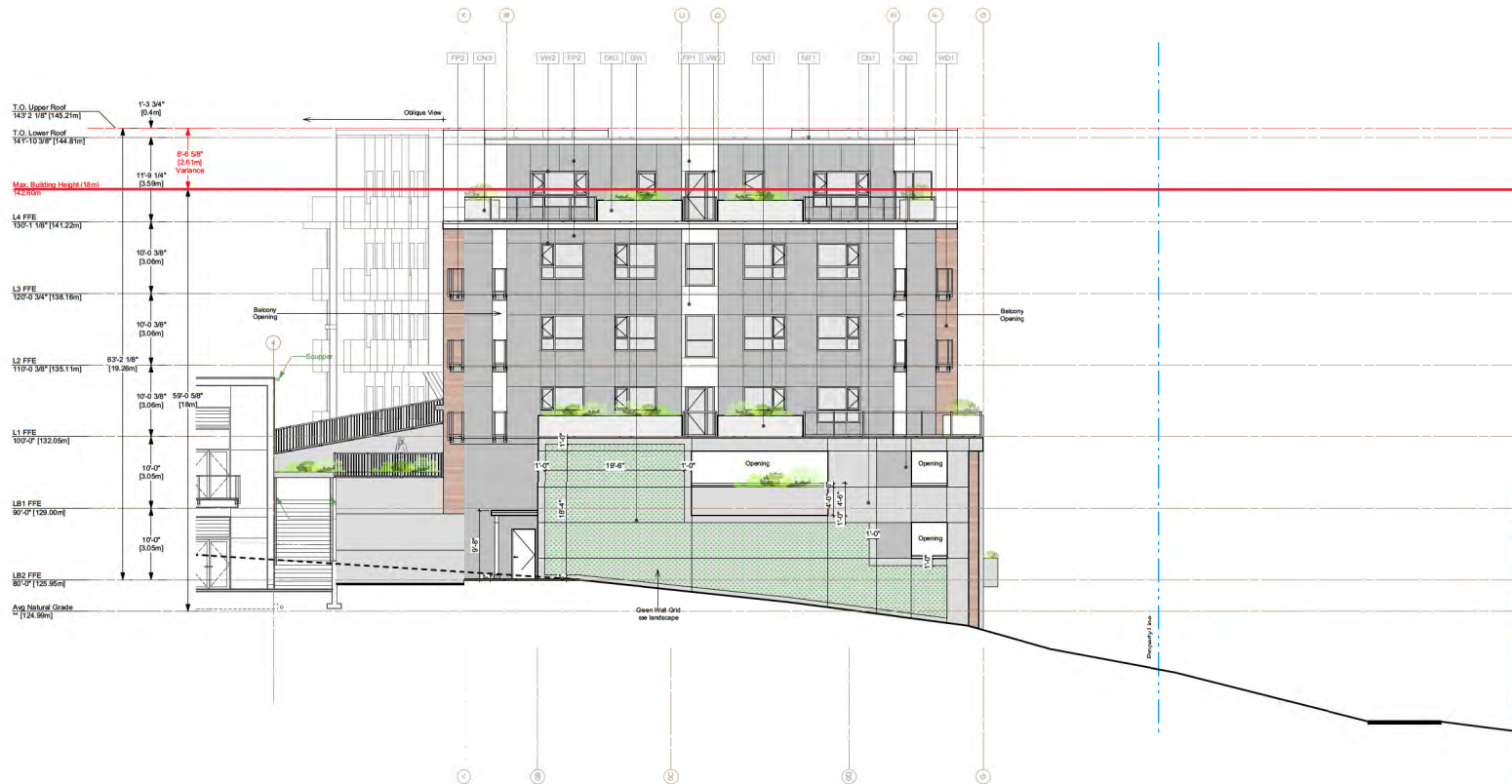
2 CORNER UNITS DECK INTERIOR ELEVATION
Scale: 1/8" = 1'-0"

ELEVATION NOTE:
1) C.J. = COLD JOINT
2) ELEVATIONS DRAWN PERPENDICULAR TO WALL FACE.

MATERIAL LEGEND:

- FP1 Fiber Cement Panel (White)
- FP2 Fiber Cement Panel (Grey)
- CN1 Concrete
- CN2 Dark Grey Stained Concrete
- CN3 Physical Concrete
- CN4 Board Formed Concrete
- MT1 Metal Flashing (White)
- MT2 Metal Flashing (Grey)
- WD1 T&G Cedar Wall and Soffit (Natural)
- AL1 Aluminum Grille Doors - (Grey)
- VM1 Vinyl Window (White)
- VM2 Vinyl Window (Grey)
- GW Greenwall Grid (Grey)
- G1 Aluminum & Glass Operable (Grey)
- GC Coloured Panel



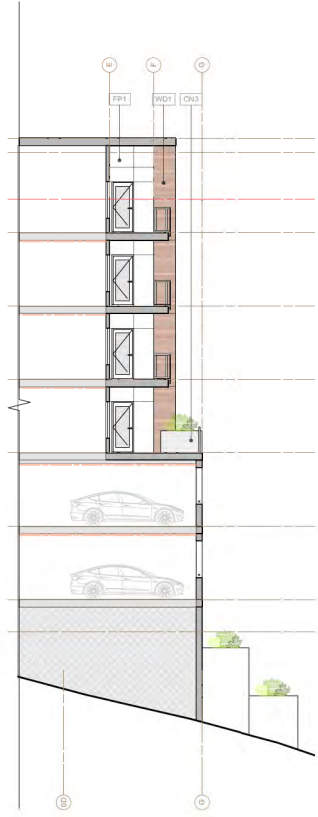
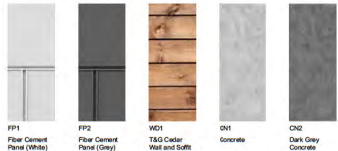


1 NORTH WEST ELEVATION
Scale: 1/8" = 1'-0"

ELEVATION NOTE:
1) C.J. = COLD ZONE
2) ELEVATIONS DRAWN PERPENDICULAR TO WALL FACE.

MATERIAL LEGEND:

- FP1 Fiber Cement Panel (White)
- FP2 Fiber Cement Panel (Grey)
- CN1 Concrete
- CN2 Dark Grey Stained Concrete
- CN3 Precast Concrete
- CN4 Board Formed Concrete
- MT1 Metal Flashing (White)
- MT2 Metal Flashing (Grey)
- WD1 T&G Cedar Wall and Soffit (Natural)
- AL1 Aluminum Grille Doors - (Grey)
- VW1 Vinyl Window (White)
- VW2 Vinyl Window (Grey)
- GW GreenWall Grid (Grey)
- G1 Aluminum & Glass Guardrail (Grey)
- GC Coloured Panel



2 TYPICAL DECK EXTERIOR ELEVATION
Scale: 1/8" = 1'-0"



1 SOUTH WEST ELEVATION - PART a
Scale: 1/8" = 1'-0"

ELEVATION NOTE:
1) C.I. = G.O.D. JOINT
2) ELEVATIONS DRAWN PERPENDICULAR TO WALL FACE.

- MATERIAL LEGEND:**
- FF1 Fiber Cement Panel (White)
 - FF2 Fiber Cement Panel (Grey)
 - CN1 Concrete
 - CN2 Dark Grey Stained Concrete
 - CN3 Phenolic Concrete
 - CN4 Board Formed Concrete
 - MT1 Metal Flashing (White)
 - MT2 Metal Flashing (Grey)
 - WD1 T&G Cedar Wall and Soffit (Natural)
 - AL1 Aluminum Grids Doors - (Grey)
 - VW1 Vinyl Window (White)
 - VW2 Vinyl Window (Grey)
 - GW1 Gravelled Grid (Grey)
 - G1 Aluminum & Glass Guardrail (Grey)
 - GC Coloured Panel



RECEIVED
SEP 19 2020
2020-OCT-20
Current Planning



1 SOUTH WEST ELEVATION - PART b
Scale: 1/8" = 1'-0"

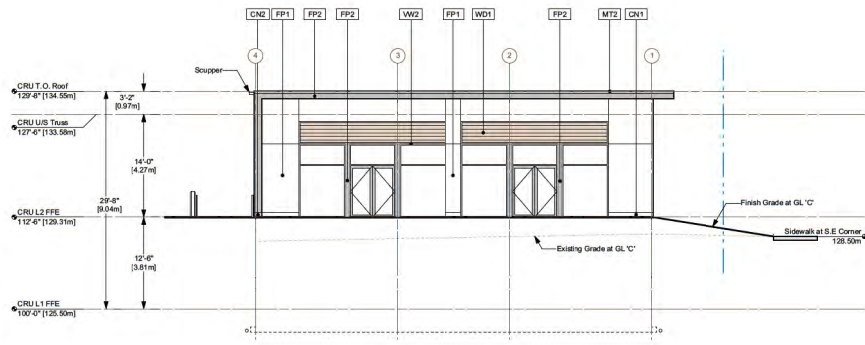
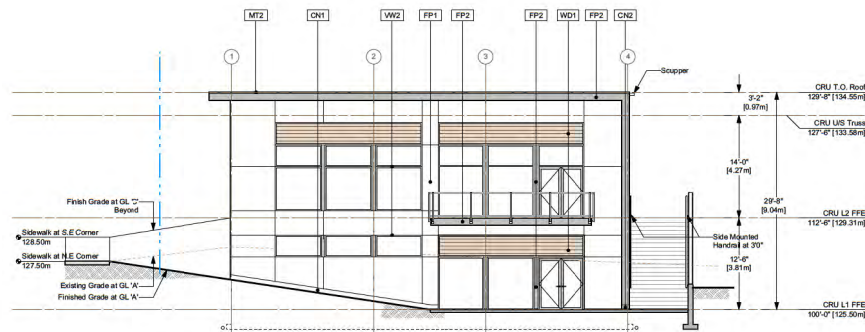
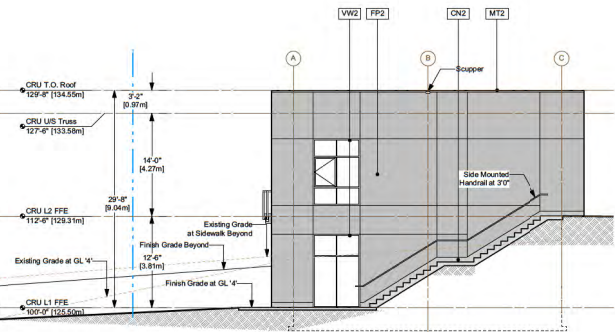
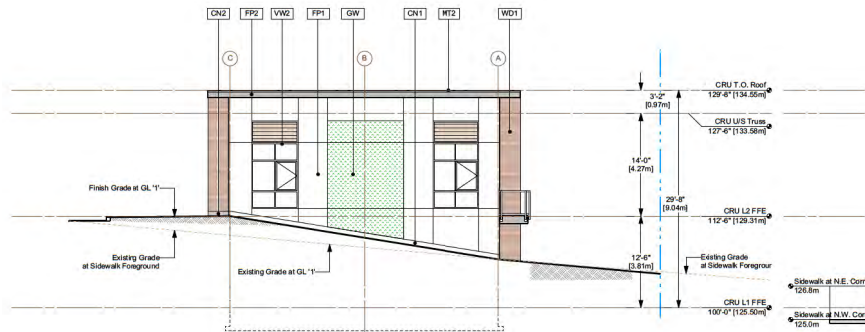
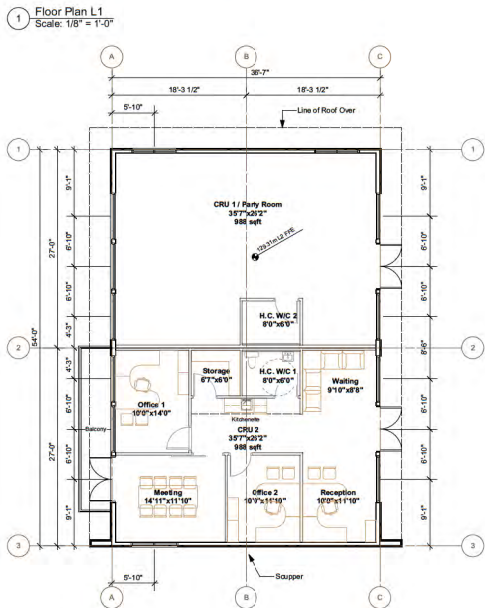
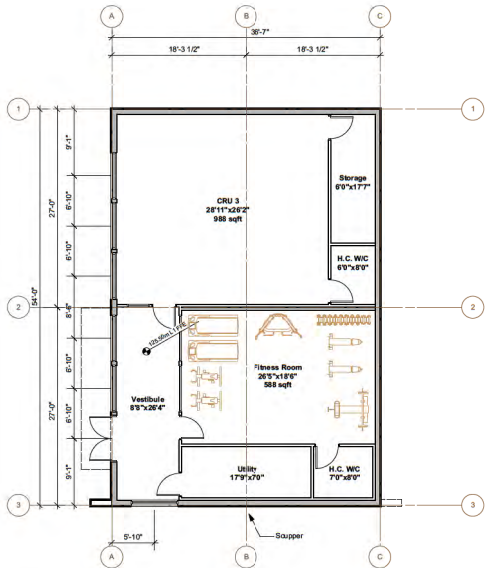
ELEVATION NOTE:
1] CL = COLD POINT
2] ELEVATIONS DRAWN PERPENDICULAR TO WALL FACE.

MATERIAL LEGEND:

- FP1 Fiber Cement Panel (White)
- FP2 Fiber Cement Panel (Grey)
- CN1 Concrete
- CN2 Dark Grey Stained Concrete
- CN3 Phenolic Concrete
- CN4 Board Formed Concrete
- MT1 Metal Flashing (White)
- MT2 Metal Flashing (Grey)
- WD1 T&G Cedar Wall and Soffit (Natural)
- AL1 Aluminum Grille Doors - (Grey)
- VW1 Vinyl Window (White)
- VW2 Vinyl Window (Grey)
- GW1 Gravelled Grid (Grey)
- G1 Aluminum & Glass Quatrail (Grey)
- GC Coloured Panel



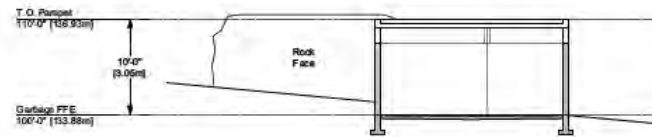
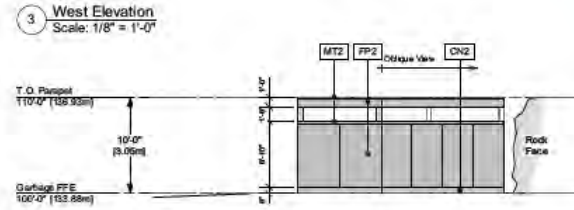
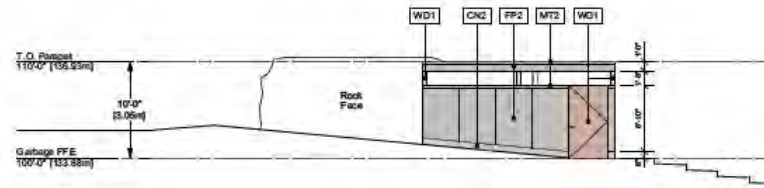
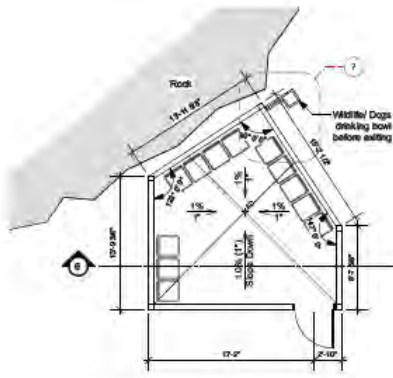
RECEIVED
2020-OCT-20
CUTLER ARCHITECTS



MATERIAL LEGEND:

- FP1 Floor Cement Panel (White)
- FP2 Floor Cement Panel (Grey)
- CN1 Concrete
- CN2 Dark Grey Bevel Concrete
- MT1 Metal Flashing (90lbs, 12")
- MT2 Metal Flashing (60lbs, 12")
- WD1 1&G Cedar Wall and Soffit
- VW1 Vinyl Window (White)
- VW2 Vinyl Window (Grey)
- GW Greenwall Grid (Grey)
- G1 Aluminum & Glass Guardrail (Grey)





MATERIAL LEGEND:

- FP2 Fiber Cement Panel (Grey)
- CN2 Dark Grey Shaved Concrete
- MT2 Metal Flashing (Grey)
- WD1 T&G Cedar Wall and Sills (Natural)



FP2
Fiber Cement
Panel (Grey)



CN2
Dark Grey
Concrete



WD1
T&G Cedar
Wall and Sills

