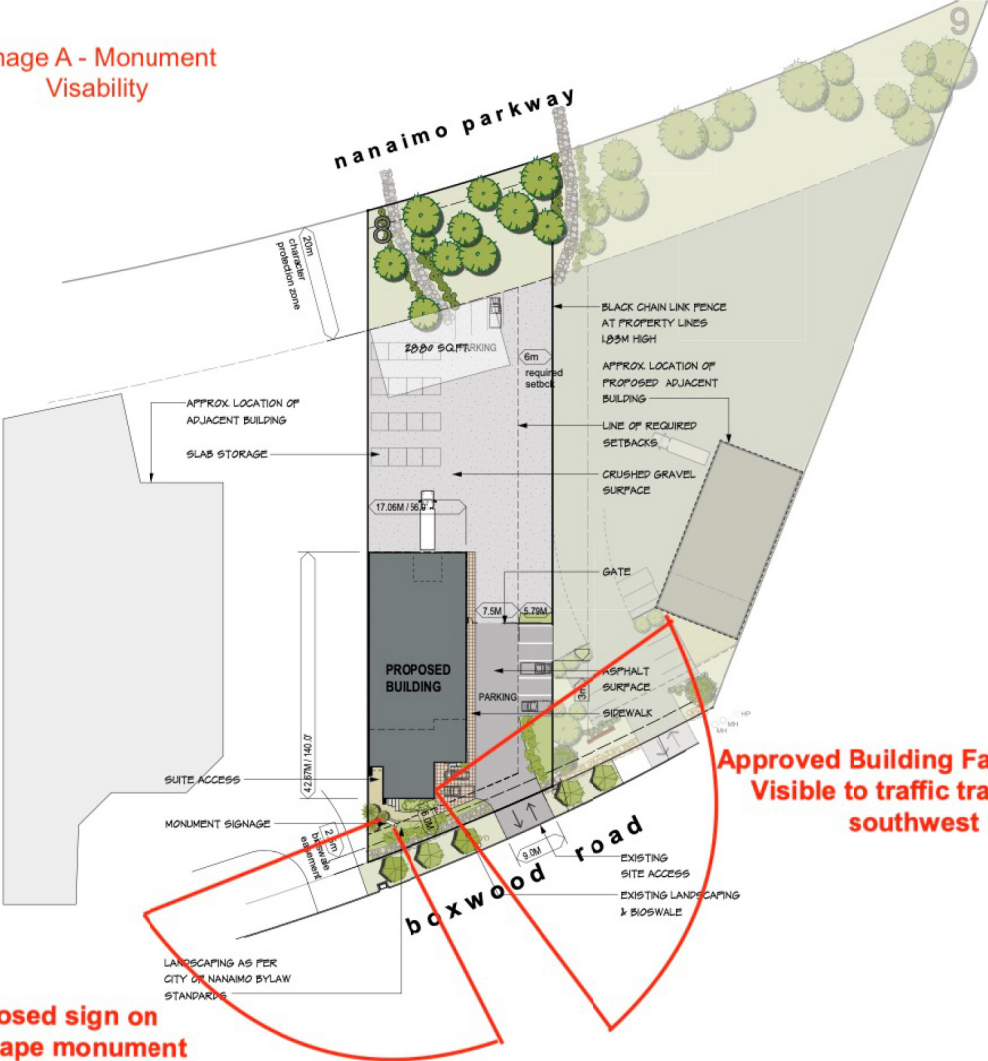


ATTACHMENT G SITE PLAN

Image A - Monument
Visibility

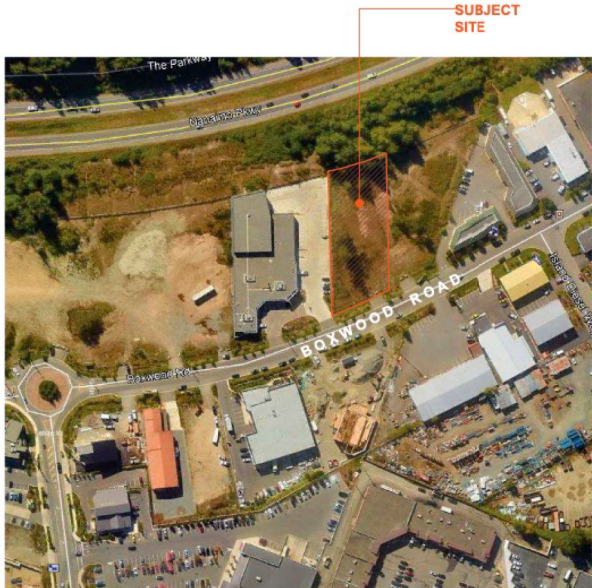


Proposed sign on
Landscape monument

Approved Building Facia Sign -
Visible to traffic travelling
southwest

SITE PLAN
NOT TO SCALE

LEGAL DESCRIPTION: LOT 8, SECTION 15, RANGE 7, MOUNTAIN DISTRICT, PLAN EPP17398	
CIVIC ADDRESS: 1955 BOXWOOD ROAD	
LOT AREAS: LOT 8 3553.4 SQ.M.	
LAND USE: INDUSTRIAL	
ZONING: I2 - LIGHT INDUSTRIAL	
BUILDING AREA: SHOWROOM/OFFICE +/- 1,812 SQ.FT. WAREHOUSE +/- 5,515 SQ.FT. CARETAKERS SUITE +/- 1,265 SQ.FT.	
LOT COVERAGE (MAX 40%): +/-19.2%	
PARKING REQUIRED: INDUSTRIAL WORKSHOP @ 1/100 SQ.M.	6
CARETAKERS SUITE	2
NOTE: ALL AREAS ARE APPROXIMATE	



AERIAL
NOT TO SCALE

RECEIVED
DVP 408
2020-JUL-21
Current Planning