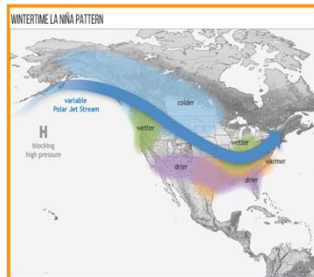




Weather Outlook

- ✓ Seasonal Outlook – La Nina
- ✓ Contracted Hyper-local forecasts



City of Nanaimo
 Web Access: <https://www.abc-weather.net/Forecasts/BC/Nanaimo.pdf>
 24/7 Toll Free: 1-800-937-8676
 Web-Click Options: [RADAR](#) [SATELLITE](#) [Observations](#)
 Forecast Date: Sunday, November 1, 2020
 Time Issued: 4:00 AM
 Forecaster: dm
 New Definitions for "Concern Levels" at: <http://www.abc-weather.net/RVOCConcernLevelDefinitions.htm>

Discussion
 The night skies will remain mostly clear. Can expect chilly temperatures but overnight lows will remain above freezing. Monday afternoon will see dry conditions, but the pattern will begin to change drastically. Cloud coverage will increase throughout the afternoon and the evening as the first wave of rain showers looks off to the west. Mild afternoon highs are in the forecast with winds generally light for the most part. Rain showers will begin overnight Monday and Tuesday as the start of a rain pattern begins. Tuesday afternoon temps will be noticeably cooler than the previous day on Monday.
 Important Note
 All "DAY" forecasts are from 0600 in the morning to 1800 late afternoon (5:00 a.m. to 6:00 p.m.)
 All "TONIGHT" forecasts are from 1800 in the evening through 0600 the next morning.

Pr	Weather	Temp (C)	Hum Level (%)	Road Temp (F)	F	I	S
☀	Mostly clear.	3			Green	Green	Green
☁	Increasing clouds.	13			Green	Green	Green
☔	Overcast. Rain begins around 1am/2am.	6			Green	Green	Green

Extended Forecast
 The rest of the week is looking fairly active with periods of rain or rain showers expected each day. Heavy winds may also occur here and there with the forecast from time to time. Conditions look to finally clear out by the week's end with noticeably cooler temperatures.

Courtesy of the Weather Network

Typical Winter Weather Events



3. Capabilities



Level of Service

On a priority basis, the City clears snow from:

- City streets
- City parking lots
- Bus shelters
- City owned public spaces
 - Plazas
 - Stairs
 - Bridges
 - Property frontage
 - Rec Facilities
- Parks
- Trailways

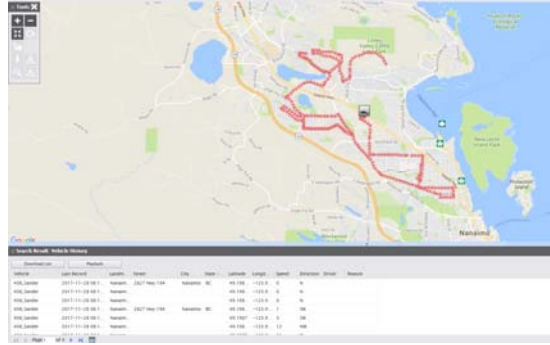
Equipment Capabilities

- Anti-Icing – 3 Brine Tanks
- Sanders/Salters with Pre-Wet
- Front and Underbody Ploughs



GPS

- Vehicle tracking in all Winter Maintenance vehicles



Staffing Capabilities

- Trained Staff – 68
- Early Shift – Monday to Friday 5am – 1pm
- Night Patrol

Shift	Sunday	Monday	Tuesday	Wednesday	Thursday	Friday	Saturday
1	5pm - 3am				4pm - Midnight	4pm - 2am	5pm - 3am
2	5am - 5pm	4pm - Midnight	4pm - Midnight				5am - 5pm
3		Midnight - 8am	Midnight - 8am	Midnight - 8am	Midnight - 8am	Midnight - 8am	

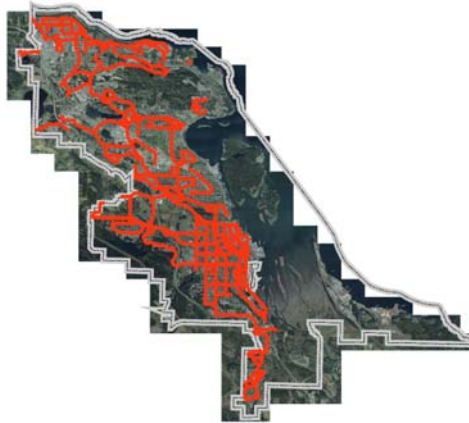
4. Budget

- 2020 budget of \$ 600,000
 - Expenditures to date \$810,000 during significant event Jan/Feb 2020
- 2021 budget of \$620,000
- Reserve of \$1.2M
 - Maintaining healthy reserves is key to managing budgetary risk.
- Climate change impacts are expected to result in shorter duration, more intense weather events

5. Routes

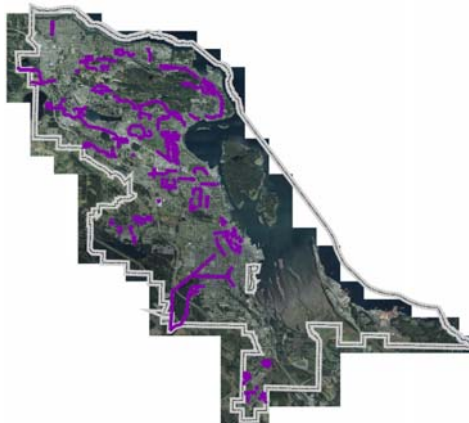


Priority 1 Routes – 160km



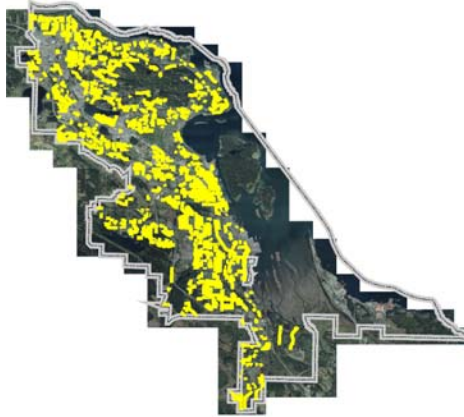
- Emergency Routes
 - Major Roads
 - Schools
(M-F 8am and 2pm)
- Developed with input from:
- City Council and Mayor
 - RCMP
 - RDN Transit
 - Nanaimo Regional General Hospital
 - Fire and Rescue Services
 - School District #68

Priority 2 Routes – 83km

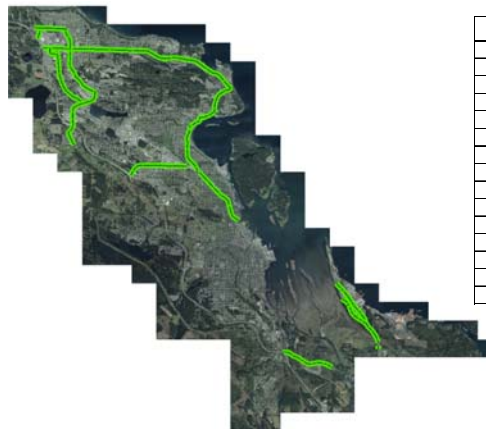


Secondary Roads

Priority 3 Routes – 216km, 750 cul-de-sacs



Contracted Roads – 100km



Contracted Roads for Winter Maintenance
Departure Bay and Hammond Bay Road (19A to 19A)
Aulds Road (19A - 19)
Uplands Drive (Rutherford to Dover)
Dover Road (Uplands to Mary Ellen)
Mary Ellen Drive (Dover to Hwy 19)
Metral Drive (Mostar to Aulds)
Enterprise Way from 19A to Metral
Mostar Road (Hwy 19 to Hwy 19A)
Rutherford Road (Hwy 19A to Uplands)
Jingle Pot Road (north to City Limits)
Northfield Road (Hwy 19 to Hwy 19A)
Terminal Avenue (Brechin to Stewart)
Cedar Road (Hwy to City Limits)
Maughan Road (Duke Road)
Jackson Road

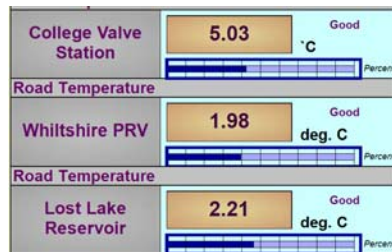
Provincial Highways



Provincially Maintained Roads
Nanaimo Parkway (Hwy 19)
Duke Point Highway (Hwy 19)
Island Highway (Hwy 19A)
Brechin Road
Stewart Avenue

Road Temperature Sensors

- Where will snow and ice begin to freeze to pavement
- Proper maintenance approach/material application
- Trends



6. Material

- Salt Shed – 1,000 Tonne capacity
- Brine – 32,000 Gallon Capacity
- Sand Stockpile



Salt

- Pre-wetting – application of brine to salt, reduce amount of material loss (deicer bounce)
- Sand – salt/sand mixture applied below -6°C



7. Communications

-  @cityofnanaimo
-  @cityofnanaimo
-  City of Nanaimo
- Nanaimo Recycles App
- Voyent Alert
- www.nanaimo.ca
- Radio
- TV News



Questions

www.nanaimo.ca/transportation-mobility/snow-and-ice-control

