

Environmental Responsibility Framework

Councils Strategic Priority: Environmental Responsibility

“We will protect and enhance Nanaimo’s natural environment by looking after the community’s biological diversity and adapt the way we live, work, recreate and move.”

KEY FOCUS AREAS

1. **Take a leadership role and focus on our environmental impact and climate change contributions in our decision making and regional participation**
2. Ensure our community and transportation planning are multi-modal designed to encourage active and public transportation

Coherence: The quality of forming a unified whole

“Just as an equalizing tuning system permitted twenty-four different musical scales to integrate and to influence one another for the first time—so cities need a framework to unify their many disparate programs, departments, and aspirations...When a community has a vision, and a plan for how to carry it out, and is able to coherently integrate its disparate elements, then it begins to be well tempered. Coherence is essential for cities to thrive.”

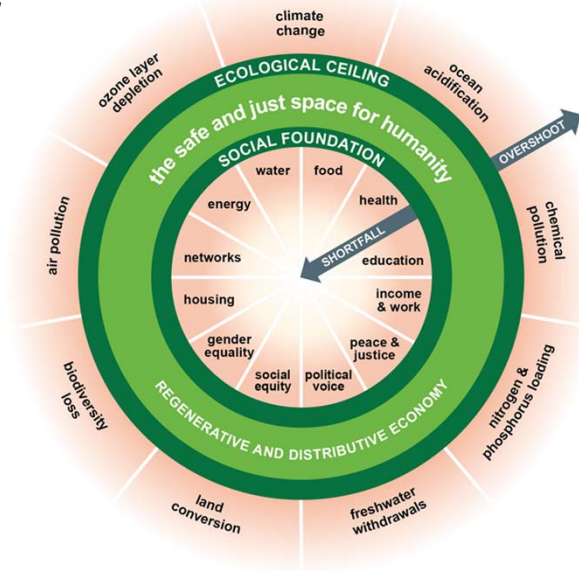
- Jonathan F.P. Rose (The Well Tempered City)

Effectively coordinating: Action to achieve shared goals

Frameworks:

- Communicate a clear vision, purpose and direction;
- They are aspirational, organized around objectives; and
- They include key performance indicators to assess progress.

Doughnut Economics: A Big Picture Framework for the 21st Century



■ Beyond the boundary
■ Boundary not quantified

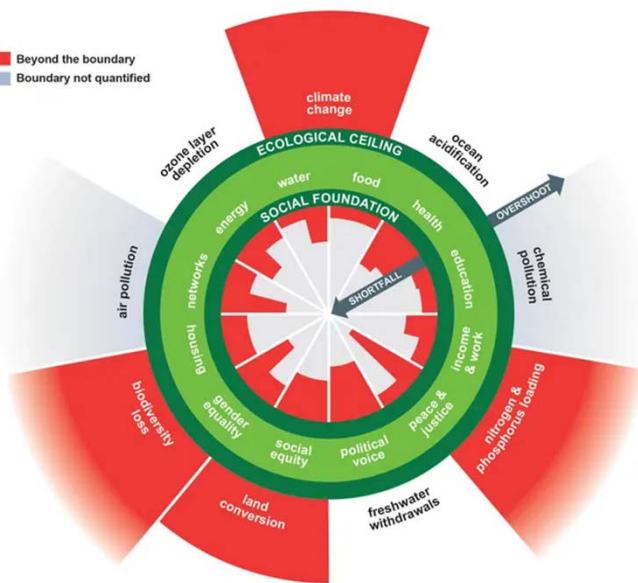


Table 2. The ecological ceiling and its indicators of overshoot

Earth-System Pressure	Control Variable	Planetary Boundary	Current Value and Trend
Climate change	Atmospheric carbon dioxide concentration, parts per million (ppm)	At most 350ppm	400ppm and rising (worsening)
Ocean Acidification	Average saturation of aragonite (calcium carbonate) at the ocean surface, as a percentage of pre-industrial levels	At least 80% of pre-industrial saturation levels	Around 84% and falling (intensifying)
Chemical Pollution	No global control variable yet defined	—	—
Nitrogen and Phosphorus Loading	Phosphorus applied to land as fertiliser, millions of tons per year Reactive nitrogen applied to land as fertiliser, millions of tons per year	At most 6.2 million tons per year At most 62 million tons per year	Around 14 million tons per year and rising (worsening) Around 150 million tons per year and rising (worsening)
Freshwater Withdrawals	Blue water consumption, cubic kilometres per year	At most 4,000 km ³ per year	Around 2,600 km ³ per year and rising (intensifying)
Land Conversion	Area of forested land as a proportion of forest-covered land prior to human alteration	At least 75%	62% and falling (worsening)
Biodiversity Loss	Rate of species extinction per million species per year	At most 10	Around 100–1,000 and rising (worsening)
Air Pollution	No global control variable yet defined	—	—
Ozone Layer Depletion	Concentration of ozone in the stratosphere, in Dobson Units	At least 275 DU	283 DU and rising (improving)

Source: Steffen et al. (2015).

Amsterdam: Downscaling the Doughnut

“the launch of a new and holistic approach to downscaling the Doughnut, and we are confident that it has huge potential at multiple scales – from neighbourhood to nation – as a tool for transformative action.”

- Kate Raworth

HOW CAN OUR CITY BE A HOME TO THRIVING PEOPLE IN A THRIVING PLACE, WHILE RESPECTING THE WELLBEING OF ALL PEOPLE AND THE HEALTH OF THE WHOLE PLANET?

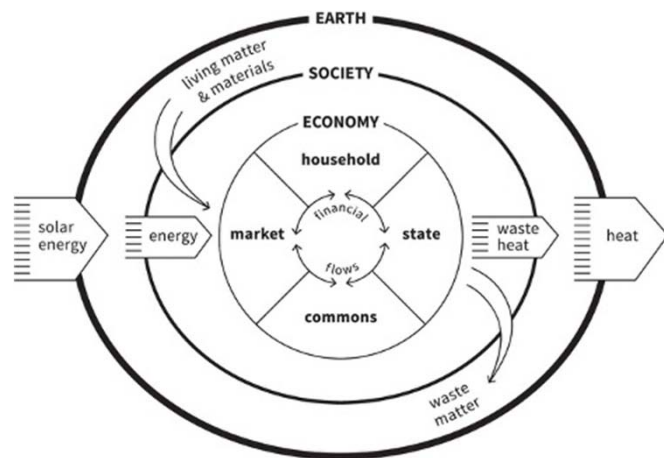


(Source: The Amsterdam City Doughnut - A Tool for Transformative Action)

Nanaimo: Doing our Part

How do we take responsibility as a city for living within the Planetary boundaries?

How Do we build a city environmental framework and OCP that supports larger goals and objectives?



Our Framework



Questions to Review our Framework:

- Does it define our strategic focus and give our city a clear vision of what we are working to achieve?
- Is it organized around objectives and is it aspirational?
- What should be the embedded target indicators that will provide feedback on whether our actions are effective and achieving outcomes?
- Can it serve as the foundation for internal and external messaging, organizing all priorities and initiatives into strategic drivers that ladder up to higher level goals and purpose?
- Can it provide an externally facing, visual outline of activities that make up our organization's overarching strategy and intentions, and show how our actions match our intentions?

Our Proposal: Refocus Our Work Plan

- To review key categories of the city's Environmental Responsibility Framework and ensure they are objectives based and capable of capturing local responsibility for key planetary boundaries, such as outlined in the doughnut.
- To review and create environmental targets and key performance indicators that the City can monitor and report on as to evaluate initiative effectiveness.
- To liaise with Community and re-imagine Nanaimo process on setting key targets and embed the environmental framework into the OCP.
- To identify gaps in key programs and initiatives within the Environmental Responsibility Framework.

Recommendations to Council

1. That Council, as part of it's Strategic Plan review process, consider replacing key Focus Area 1 under the Environmental Responsibility Key Focus Area with: "We will take responsibility to build a city and community that operates within the planetary boundaries necessary to maintain core life sustaining ecological functions."
1. That the Environment Committee Work Plan be amended to focus on the development of a holistic, complete and objective-based Environmental Responsibility Framework and that the principles and objectives of the Environmental Responsibility Framework be included in the Re-Imagine Nanaimo process.