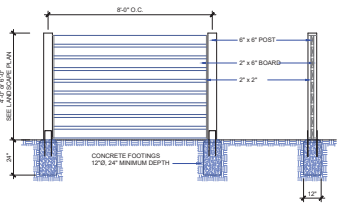


ATTACHMENT G LANDSCAPE PLAN AND DETAILS



BOARD FENCE
Scale: N.T.S.



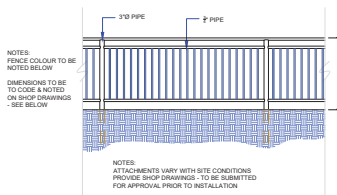
evergreen huckleberry



osoberry



red flowering currant



METAL PICKET FENCE
Scale: N.T.S.



red twigged dogwood



shrub rose



tall oregon grape

PLANT PALETTE

Key	Qty	Botanical Name	Common Name	Pot Size
Deciduous Trees				
Cn	3	<i>Cornus nuttallii</i> 'Eddies White Wonder'	Flowering Dogwood	8 cm cal
Fsd	10	<i>Fagus sylvatica</i> 'Dawky's Gold'	Dawky's Beech	6 cm cal
Ln	1	<i>Laurus nobilis</i>	Bay Tree	10 gal
Qr	1	<i>Quercus rubra</i>	Red Oak Oak	6 cm cal
Slap	2	<i>Styrax japonica</i>	Snowbell Tree	6 cm cal
Evergreen Trees				
PoB	3	<i>Picea omorika</i> 'Bruns'	Serbian Spruce	2 m
Evergreen Hedging /Shrubs				
Abg	1	<i>Abelia grandiflora</i>	Abelia	2 gall
Au	2	<i>Arcuticum compacta</i>	Strawberry Tree	5 gall
Cl	7	<i>Choisya ternata</i>	Mexican Orange Blossom	1 gall
Gs	20	<i>Gaultheria shallon</i>	Salal	1 gall
Ma	21	<i>Mahonia aquifolium</i>	Tall Oregon Grape	1 gall
Mn	20	<i>Mahonia nervosa</i>	Dull Oregon Grape	1 gall
La	35	<i>Lavandula angustifolia</i> 'Hidcote Superior'	English Lavender	1 gall
Od	2	<i>Osmanthus delavaya</i>	Osmanthus	1 gall
Sr	5	<i>Sarcococca ruscifolia</i>	Sweetbox	1 gall
Sl	11	<i>Skimmia japonica</i>	Skimmia	1 gall
Tm	7	<i>Taxus media</i> 'eddes'	Yew	5 gall
Vo	24	<i>Vaccinium ovalum</i>	Evergreen Huckleberry	1 gall
Deciduous Shrubs				
Cs	9	<i>Cornus stolonifera</i>	Red twigged Dogwood	1 gall
Hm	3	<i>Hydrangea macrophylla</i>	Lace cap	1 gall
Oc	12	<i>Oemleria cerasiformis</i>	Osoberry	1 gall
Rf	9	<i>Ribes sanguineum</i>	Red Flowering Currant	1 gall
Rr	25	<i>Rosa rugosa</i>	Shrub Rose	1 gall
Sv	1	<i>Syringa vulgaris</i>	Lilac	1 gall
Ferns				
Pmuri	25	<i>Polystichum munitum</i>	Sword Fern	1 gall
Ornamental Grasses				
Cak	19	<i>Calamagrostis acutiflora</i> 'Karl Foester'	Feather Reed Grass	1 gall
Pa	18	<i>Pennisetum a. Hamlyn</i>	Dwarf Fountain Grass	1 gall
Perennials/Groundcovers				
Nd	10	<i>Nepeta faassenii</i> 'Dropmore'	Catmint	1 gall
Ro	10	<i>Rosemarinus officinalis</i>	Rosemary	1 gall
So	10	<i>Salvia officinalis</i> 'Purpurascens'	Purple Leaved Sage	1 gall
Tv	10	<i>Thymus vulgaris</i>	Culinary Thyme	10 cm
Perennials/Grasses for Hedgerows				
Am	35	<i>Achillea millefolium</i>	Yarrow	10 cm
As	35	<i>Aster subspicatus</i>	Douglas Aster	10 cm
Dac	35	<i>Danthonia californica</i>	California Oatgrass	10 cm
Dc	35	<i>Deschampsia cespitosa</i>	Tufted Hairgrass	10 cm
He	35	<i>Helenum autumnale</i>	Mountain Sheezweed	10cm
Sl	35	<i>Solidago lepida</i>	Canada Goldenrod	10cm

NOTES:
For grading information,
see Civil drawings.



REVISIONS:

Issued for DP - 2020Jan15
Issued for DP Revision - 2020Feb19

Issued for DP Revision #2 - Tree
Management Plan - 2020Jun26
Issued for DP Revision #3 - Board
Fence Heights - 2020Sep11

CONSULTANT:



PROJECT:

227 PRIDEAUX
STREET
NANAIMO, BC

SITE LEGAL DESCRIPTION:

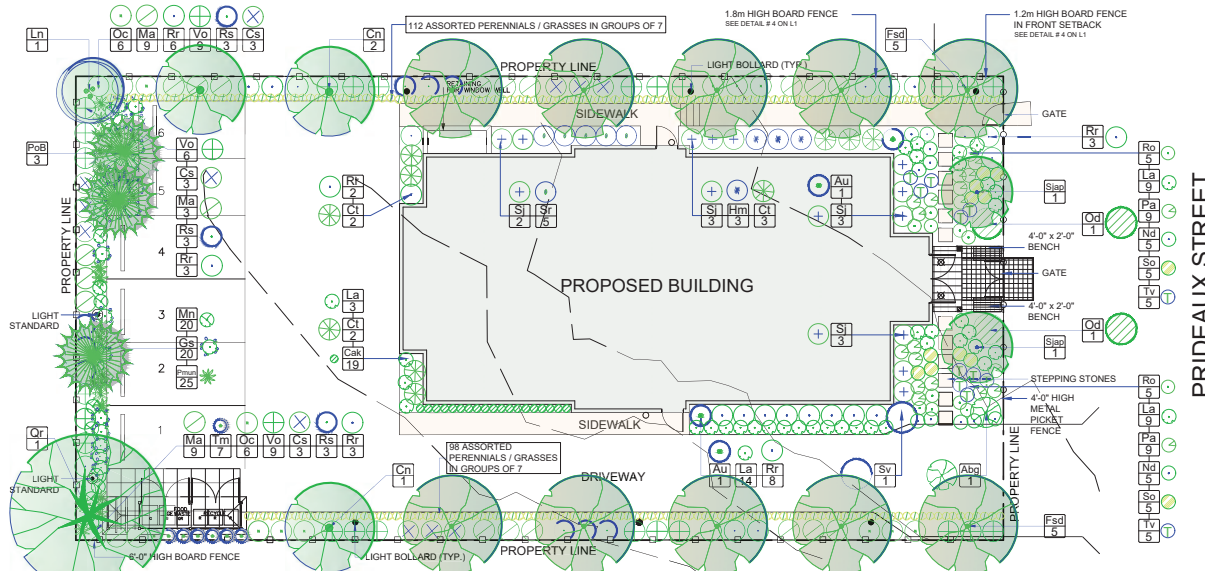
Lot 11, Block35, Section 1,
Nanaimo District, Plan 584

SHEET TITLE:

LANDSCAPE
CONCEPT PLAN

SCALE: AS NOTED DATE: JAN. 10, 2020
DRAWN: DR CHECKED: VJD
PROJECT NUMBER:
227 PRIDEAUX 2020
DRAWING NUMBER:

L0.1 - DP



LANDSCAPE CONCEPT
Scale: 1:100

DESIGN RATIONALE

The project is located in the Old City Neighborhood of Nanaimo. The neighborhood has a distinctive landscape character as reflected in the Old City Multiple Family Residential Design Guidelines.

Prideaux Streetscape and Garden:

- A 4'-0" high metal picket fence extends along the entire frontage separating the street from the private lot, broken only by the walkways and driveway.
- Site lines into the driveway have been preserved, by placing smaller shrubs on either side of the driveway.
- There is accent planting by the entry gates.
- The plantings behind the fence are informal and semi-permeable. By planting both evergreen and deciduous flowering shrubs, some privacy for the front rooms can be achieved, while providing site lines to the street for safety. This garden is planted in the character of a traditional single-family residential garden in the neighbourhood, with informal groupings of a diverse palette of plants.

Amenities:

- The front garden is the amenity space for the project. Because of the proximity to the ground floor units and privacy issues, the design focuses on the garden as a passive amenity, fostering wildlife, such as birds and insects. These can be enjoyed by the residents and the people passing by. Two benches are located at the entrance where people can wait for rides, enjoy the gardens and be a part of the street. Pollinator plants and culinary herbs are proposed in this scheme but the gardens could be used for vegetable gardening in the future. Stepping stones through the garden to allow easy access for gardening.

Landscape buffers:

- Trees provide vertical relief to the buildings, shade on the parking area, seasonal interest to the residents on all floors and habitat for birds and insects. A variety of species have been selected, both deciduous and evergreen, and placed according to the amount of space available.
- Hedgerows with a mix of shrub and perennial species, mostly native plants, provide food and shelter for birds and insects.

General notes:

- All plants and planting will be installed and maintained according to the BC Landscape Standard, latest edition. A drip irrigation system will be installed.
- The plants have been selected for their hardiness, their ability to withstand some drought, their habitat value and their aesthetic value.

RECEIVED
DP 179
2020-SEP-14
Current Planning