

ATTACHMENT E PROPOSED BUILDING ELEVATIONS

Copyright Reserved: These drawings are as all times the property of the Architect. Reproduction in whole or in part without written consent of the Architect is prohibited.

consultants:

project no.:

issue / revisions:

Issue / Revisions	Date
6 AMENDMENTS TO DP	15 JUN 20
5 BP CO-ORD.	03 JUN 20
4 BP CO-ORD.	22 MAY 20
3 BP CO-ORD.	20 MAY 20
2 BP CO-ORD.	13 MAY 20
1 DEVELOPMENT PERMIT	26 NOV 19
No. Issued / Revisions	Date

alan lowe architect inc.

#118 - 21 Erie St. 1 250 380 2888
Victoria, British Columbia

swt:



project title:
**PROPOSED
MITSUBISHI DEALERSHIP**

KENWORTH ROAD
VANUVER, BC

PROPOSED
ELEVATIONS

project no.: 19-622

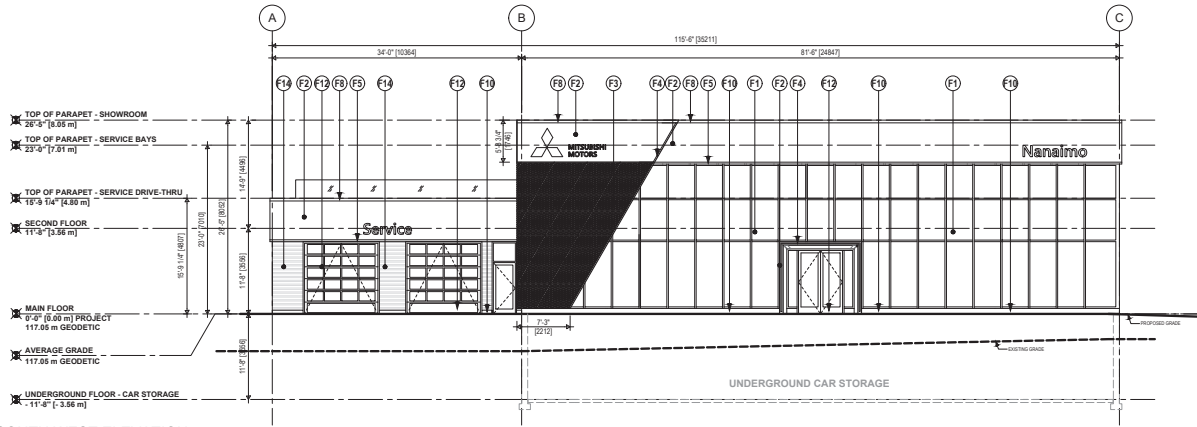
date: 15 JUN 2020 scale: AS NOTED

checked by: LOWE drawn by: DM, RT

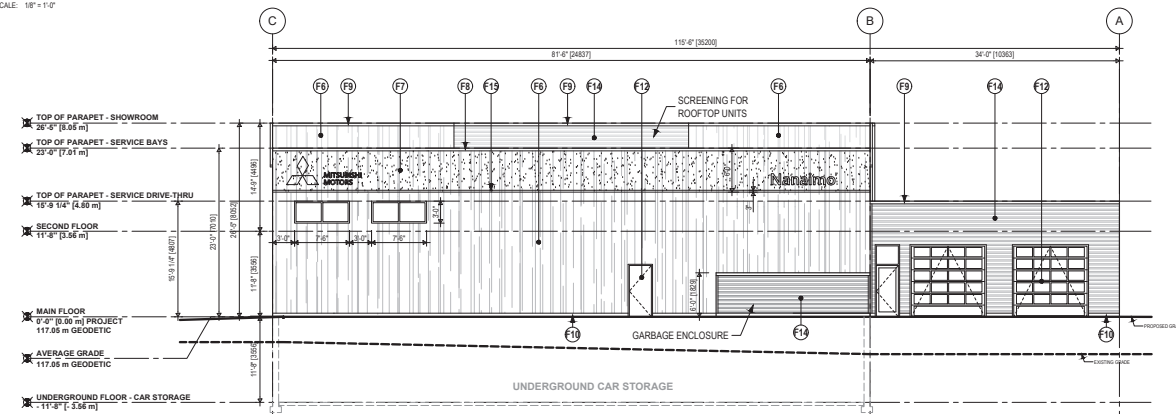
sheet no.:

RECEIVED
DP 1172
2020-JUL-02

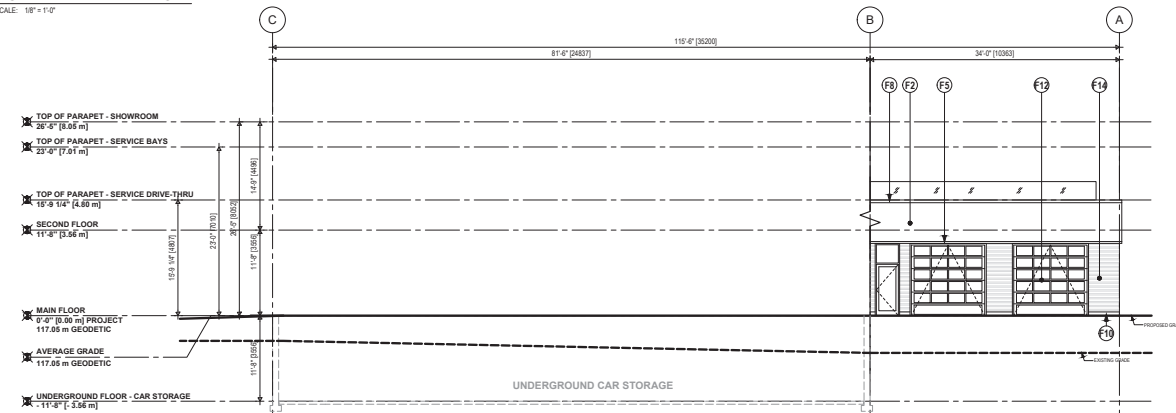
A3.0



1 SOUTH WEST ELEVATION
SCALE: 1/8" = 1'-0"



2 NORTH EAST ELEVATION
SCALE: 1/8" = 1'-0"



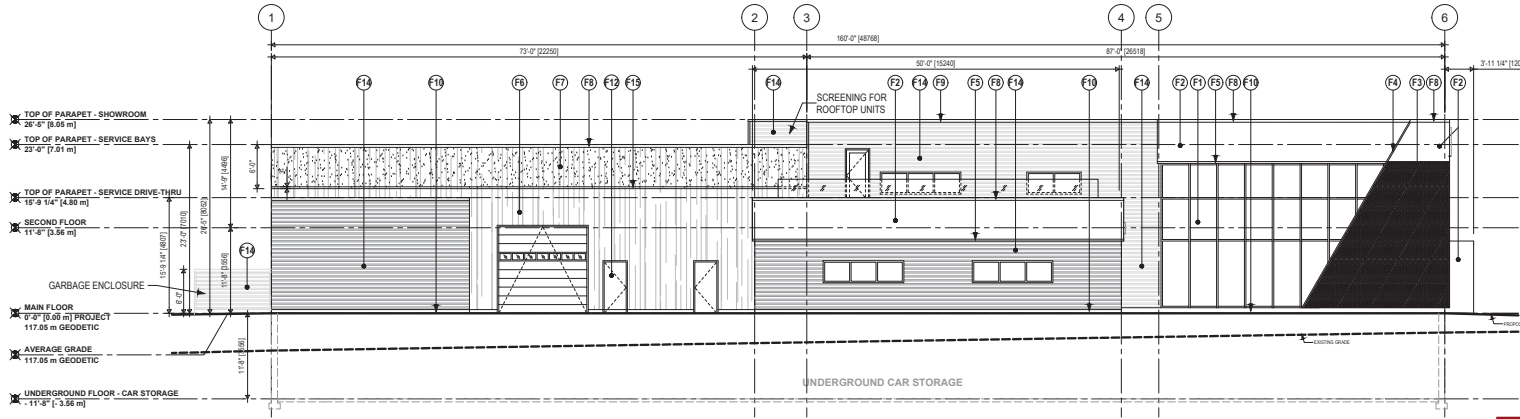
3 NORTH EAST ELEVATION - DRIVE THRU
SCALE: 1/8" = 1'-0"

EXTERIOR FINISHES & NOTES :

- F1 SHOWROOM CURTAIN WALL
KAWNEER 1600T SYSTEM 1
GLASS SCARBAR 704
FRAME: CLEAR ANODIZED
- F2 FASCIA
SOBOTECH LTD.
ALUMINUM COMPOSITE MATERIALS PANEL
"BLACK"
- F3 PERFORATED METAL PANELS
SOBOTECH LTD.
ALUMINUM PLATE WITH BRAND SPECIFIC PERFORATIONS
"BLACK"
- F4 FASCIA ACCENT
"RED"
- F5 FASCIA ACCENT
"WHITE"
- F6 TILT UP CONCRETE
PAINTED TO MATCH COLOUR OF 1/4" CORRUGATED METAL CLADDING
(CONFORM COLOUR W/ ARCHITECT)
- F7 PAINTED FASCIA BAND ON TILT UP CONCRETE
COLOUR TO MATCH 1/4" ACM PANEL IN BLACK
- F8 PRE FINISHED METAL CAP FLASHING
COLOUR TO MATCH 1/4" CORRUGATED METAL CLADDING
- F9 PRE FINISHED METAL CAP FLASHING
COLOUR TO MATCH 1/4" CORRUGATED METAL CLADDING
- F10 BASE WALL METAL FLASHING
COLOUR TO MATCH 1/4" CORRUGATED METAL CLADDING
- F11 1/2" WIDE RECESSED REVEAL LINE
PAINTED TO MATCH COLOUR OF 1/4" (WHITE)
- F12 EXTERIOR PAINT FOR MISCELLANEOUS FINISHES
COLOUR TO MATCH 1/4" CORRUGATED METAL CLADDING
(CONFORM COLOUR W/ ARCHITECT)
- F13 1/2" WIDE RECESSED REVEAL LINE
PAINTED TO MATCH COLOUR OF 1/4" (RED)
- F14 HORIZONTAL CORRUGATED METAL CLADDING
VICWEST - CL 6025 SR
IN "BRIGHT SILVER" - GC-2624 HORIZONTAL ORIENTATION
PAINTED ACCENT BAND ON TILT UP CONCRETE
COLOUR TO MATCH 1/4" FASCIA ACCENT IN WHITE

Copyright Reserved. These drawings are as all times the property of the Architect. Reproduction in whole or in part without written consent of the Architect is prohibited.

consultants:



1 NORTH WEST ELEVATION
SCALE: 1/8" = 1'-0"

EXTERIOR FINISHES & NOTES :

- F1 SHOWROOM CURTAIN WALL
KAWNEER 1600T SYSTEM 1
GLASS: SOLARBAN 70XL
FRAME: CLEAR ANODIZED
- F2 FASCIA
SOBOTECT LTD.
ALUMINUM COMPOSITE MATERIALS PANEL
"BLACK"
- F3 PERFORATED METAL PANELS
SOBOTECT LTD.
ALUMINUM PLATE WITH BRAND SPECIFIC PERFORATIONS
"BLACK"
- F4 FASCIA ACCENT
"RED"
- F5 FASCIA ACCENT
"WHITE"
- F6 TILT UP CONCRETE
PAINTED TO MATCH COLOUR OF 1" CORRUGATED METAL CLADDING
(CONFORM COLOUR W ARCHITECT)
- F7 PAINTED FASCIA BAND ON TILT UP CONCRETE
COLOUR TO MATCH "F2" ACM PANEL IN BLACK
- F8 PRE-FINISHED METAL CAP FLASHING
COLOUR TO MATCH "F2" ACM PANEL IN BLACK
- F9 PRE-FINISHED METAL CAP FLASHING
COLOUR TO MATCH "F1" CORRUGATED METAL CLADDING
- F10 BASE WALL METAL FLASHING
COLOUR TO MATCH "F1" CORRUGATED METAL CLADDING
- F11 3" WIDE RECESSED REVEAL LINE
PAINTED TO MATCH COLOUR OF "F9" (WHITE)
- F12 EXTERIOR PAINT FOR MISCELLANEOUS FINISHES
COLOUR TO MATCH "F1" CORRUGATED METAL CLADDING
(CONFORM COLOUR W ARCHITECT)
- F13 2" WIDE RECESSED REVEAL LINE
PAINTED TO MATCH COLOUR OF "F4" (RED)
- F14 HORIZONTAL CORRUGATED METAL CLADDING
"HONEST" - CL 6025 SR
IN "BRIGHT SILVER" - OC-2624 HORIZONTAL ORIENTATION
PAINTED ACCENT BAND ON TILT UP CONCRETE
COLOUR TO MATCH "F5" FASCIA ACCENT IN WHITE

project room:

issue / revisions:

No.	Issue / Revisions	Date
6	AMENDMENTS TO DP	15 JUN 20
5	BP CO-ORD.	03 JUN 20
4	BP CO-ORD.	22 MAY 20
3	BP CO-ORD.	20 MAY 20
2	BP CO-ORD.	13 MAY 20
1	DEVELOPMENT PERMIT	26 NOV 19

alan lowe architect inc.

#118 - 21 Erie St. 1 250.380.2888
Victoria, British Columbia
swt:



project file:

PROPOSED MITSUBISHI DEALERSHIP

KENWORTH ROAD
VANARMO, BC

PROPOSED ELEVATIONS

project no.: 19-622

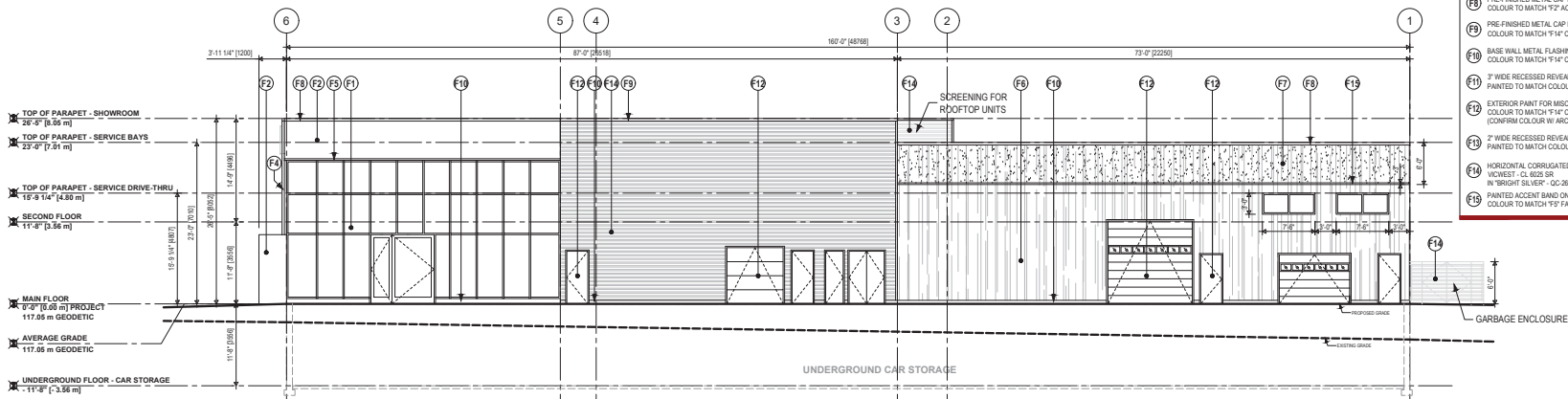
date: 15 JUN 2020 scale: AS NOTED

checked by: LOWE drawn by: DM, RT

sheet no.:

RECEIVED
DP 1172
2020-JUL-02
CITY OF VANCOUVER

A3.1



2 SOUTH EAST ELEVATION
SCALE: 1/8" = 1'-0"