

# ATTACHMENT B

## PLANT PALETTE

This list consists of plants that are indigenous to the area or exotic species that work well with the native plant ecology. This plant list is not definitive and is subject to availability of plants at the time of design development and installation.

Native plants	Botanical Name	Common Name	ht/spd	attributes	Wildlife value
Conifers trees	<i>Pinus contorta contorta</i>	Shore Pine	30'x20'	Evergreen	Valuable wildlife tree
Evergreen Shrubs	<i>Gaultheria shallon</i>	Sale	2'x3'	Green foliage, black berries	Mammals, birds, insects
	<i>Mahonia aquifolium</i>	Tall Oregon Grape	4'x5'	Shiny green foliage yellow spring flowers, black berries	birds
	<i>Vaccinium ovalifolium</i>	Evergreen huckleberry	4'x4'	Green foliage, black white berries	birds
Deciduous Shrubs	<i>Aronia arbutifolia</i>	Saskatoonberry	8'x4'	White spring flowers, white berries	birds
	<i>Ribes sanguineum</i>	Red Flowering Currant	6'x4'	Pink flowers summer	Hummingbirds early spring
Grasses, Groundcovers, Perennials	<i>Aster subspicatus</i>	Douglas Aster	12'x12'	purple flowers summer	invertebrates
	<i>Achillea spp</i>	Yarrow	1'x2'	medicinal	Butterflies, bees
	<i>Asplenium platyneuron</i>	Kennelrueck	1'x2'	Evergreen, berries	birds

<i>Artemisia tridentata</i>	Coastal Sage	1'x3'	Dry fringes, aromatic	Birds, insects, butterflies
<i>Dactylis glomerata</i>	California Doggrass	2'x1'	Bundling grass, good for dry slopes	Food and cover for invertebrates, birds and insects
<i>Eriophorum lanatum</i>	Woolly Surf-tower	12'x12'	wooly flowers, short tufted	butterflies, bees
<i>Festuca chlorovirens</i>	Marsh Fescue	1'x1'	Good for dry slopes	Food and cover for invertebrates, birds and insects
<i>Fragaria chiloensis</i>	Coastal strawberry	2'x2'	White flowers, berries	Birds insects
<i>Sedum spp</i>	Stonecrop	various	various	bees

**Exotic Plants**

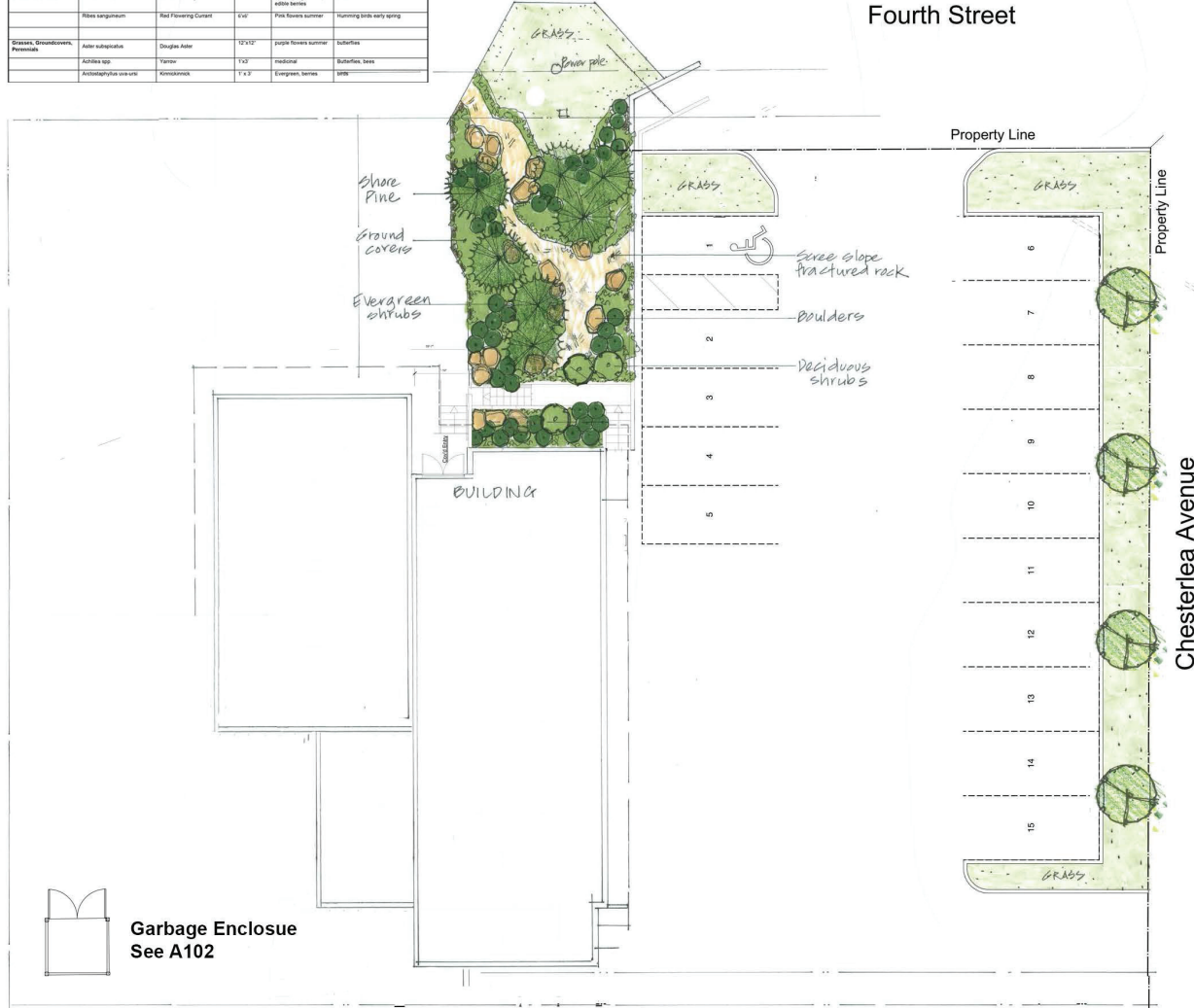
<i>Acacia saligna</i>	Wattle	6m		
<i>Excoecaria agallocha</i>	Shepherd Tree	8'x6'	late winter flowers	hummingbirds

### Design rationale

The landscape design is a representation of the rocky knolls occurring on the slopes of Mount Benson and Westwood Ridges. The plants listed below are drought resistant species that will be suitable for the growing conditions on the site.

While drought resistant once established, these plants will need water for their first two growing season and subsequent years of extreme drought.

### Fourth Street



Rock outcrops



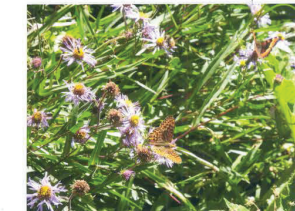
Pines, groundcover, grasses



Boulders + groundcovers



Scree slopes - angular rock colonized by plants



Flowering plants to attract wildlife



DATE	REV	DESCRIPTION
10.3.20	1	Revisions
10.3.20	2	PARKING LOT REVISED
25/02/21	3	DATE REV DESCRIPTION

CONSULTANT

**VICTORIA DRAKEFORD**  
LANDSCAPE ARCHITECT

236 Pine St. Nanaimo,  
B.C. V9P-2B9  
250-754-4338  
victoria@island.net

PROJECT

**NANAIMO SEARCH and RESCUE**

SHEET TITLE

**LANDSCAPE PLAN**

SCALE: 1/8"=1'-0" DATE: DEC 28, 2020

DRAWN: VID CHECKED: [initials]

PROJECT NUMBER: [blank]

DRAWING NUMBER: NSR 19