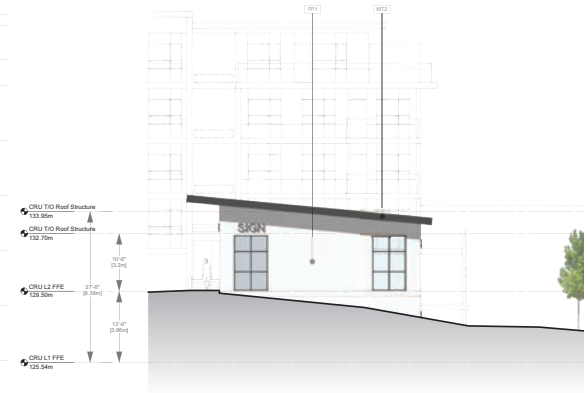




1 North Eastern Elevation (Part 1)
Scale: 3/32" = 1'-0"



3 CRU North Eastern Elevation
Scale: 3/32" = 1'-0"



2 North Eastern Elevation (Part 2)
Scale: 3/32" = 1'-0"

MATERIAL LEGEND:

- FP1 Fiber Cement Panel (White)
- FP2 Fiber Cement Panel (Grey)
- CN1 Concrete
- CN2 Dark Grey Stained Concrete
- MT1 Metal Flashing (White, 12")
- MT2 Metal Flashing (Grey, 12")
- WD1 T&G Cedar Wall and Soffit
- AL1 Aluminum Grids Doors - Grey Powder Coated





MATERIAL LEGEND:

- FP1 Fiber Cement Panel (White)
- FP2 Fiber Cement Panel (Grey)
- CN1 Concrete
- CN2 Dark Grey Stained Concrete
- MT1 Metal Flashing (White, 12")
- MT2 Metal Flashing (Grey, 12")
- WD1 T&G Cedar Wall and Soffit
- AL1 Aluminum Grids Doors - Grey Powder Coated

4 North Western Elevation
Scale: 3/32" = 1'-0"



5 South Eastern Elevation
Scale: 3/32" = 1'-0"



6 CRU South Eastern Elevation
Scale: 3/32" = 1'-0"

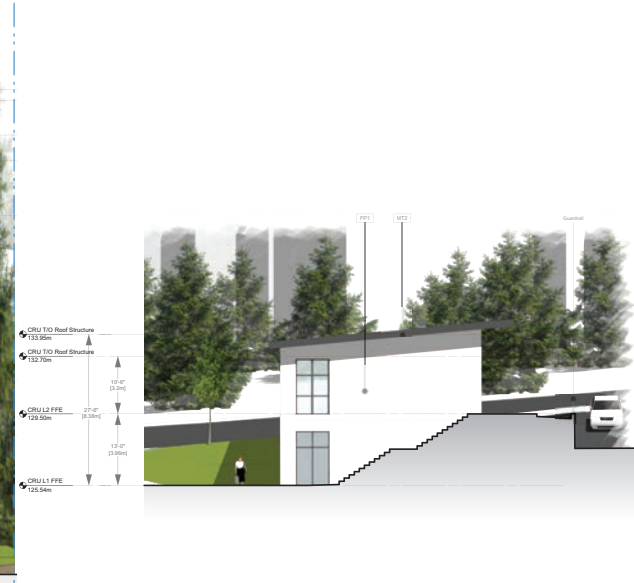


7 South Western Elevation (Part 1)
Scale: 3/32" = 1'-0"

- MATERIAL LEGEND:**
- FP1 Fiber Cement Panel (White)
 - FP2 Fiber Cement Panel (Grey)
 - CN1 Concrete
 - CN2 Dark Grey Stained Concrete
 - MT1 Metal Flashing (White, 12")
 - MT2 Metal Flashing (Grey, 12")
 - WD1 T&O Cedar Wall and Sill
 - AL1 Aluminum Grille Doors - Grey Powder Coated



8 South Western Elevation (Part 2)
Scale: 3/32" = 1'-0"



9 CRU South Western Elevation
Scale: 3/32" = 1'-0"