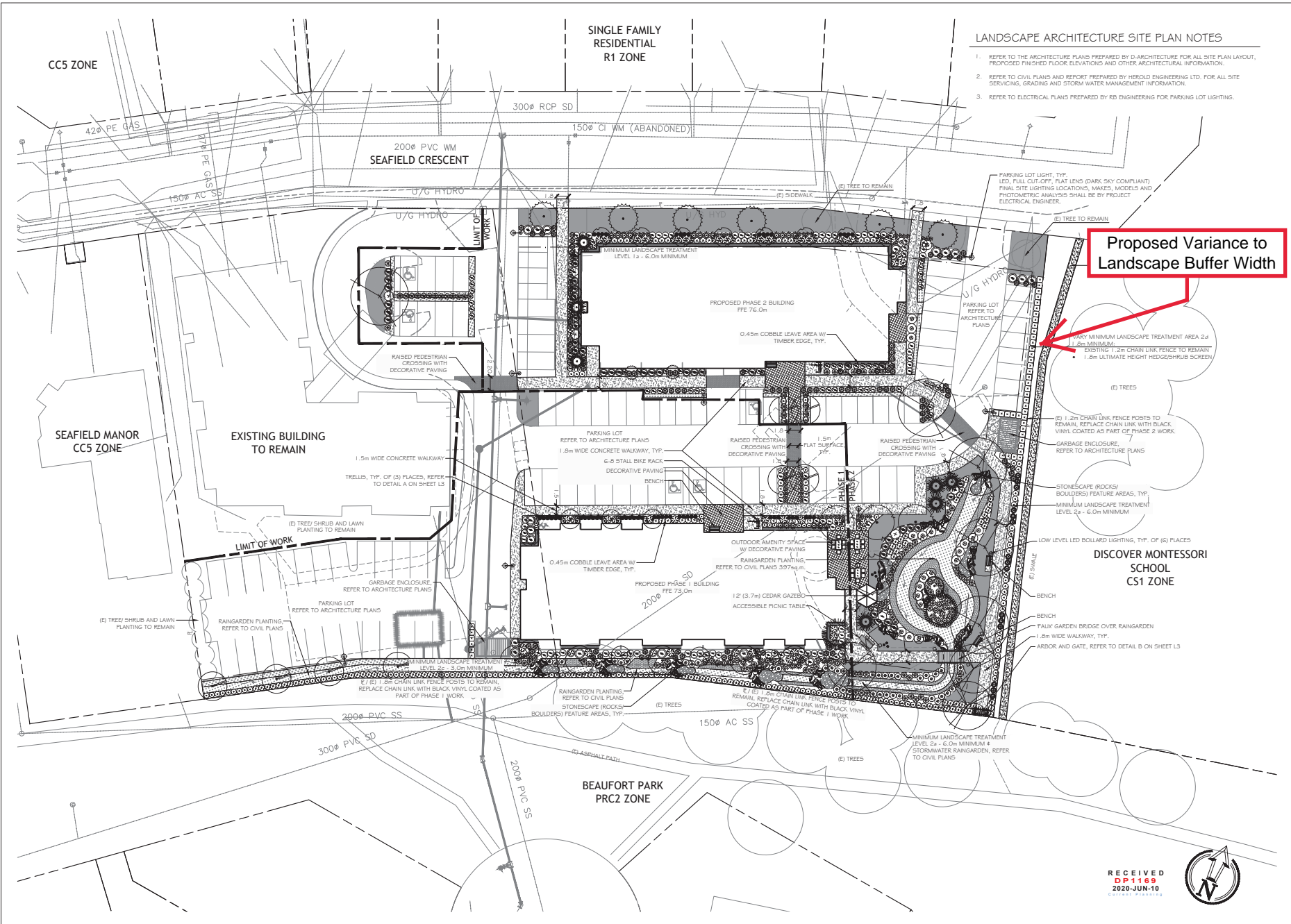


# ATTACHMENT G LANDSCAPE PLAN



### LANDSCAPE ARCHITECTURE SITE PLAN NOTES

- REFER TO THE ARCHITECTURE PLANS PREPARED BY D-ARCHITECTURE FOR ALL SITE PLAN LAYOUT, PROPOSED FINISHED FLOOR ELEVATIONS AND OTHER ARCHITECTURAL INFORMATION.
- REFER TO CIVIL PLANS AND REPORT PREPARED BY HEROLD ENGINEERS LTD. FOR ALL SITE SERVICING, GRADING AND STORM WATER MANAGEMENT INFORMATION.
- REFER TO ELECTRICAL PLANS PREPARED BY RB ENGINEERING FOR PARKING LOT LIGHTING.

**Proposed Variance to Landscape Buffer Width**



THIS DRAWING IS NOT FINAL AND SHALL NOT BE USED FOR CONSTRUCTION WORK UNLESS IT HAS BEEN SIGNED AND SEALED BY THE LANDSCAPE ARCHITECT. THE COPYRIGHT TO ALL DESIGN AND DRAWINGS ARE THE PROPERTY OF AND RESERVED TO LANDSCAPE ARCHITECTS. NO PART MAY BE REPRODUCED OR TRANSMITTED IN ANY FORM OR BY ANY MEANS WITHOUT THE WRITTEN PERMISSION OF MACDONALD GRAY LANDSCAPE ARCHITECTS.

**1125 & 1145 Seafield Crescent**  
Woodgrove Senior Citizen Housing Society  
Nanaimo, BC

| SCHEMATIC LANDSCAPE PLAN |                |
|--------------------------|----------------|
| Date:                    | June 8, 2020   |
| Drawn:                   | CM             |
| Checked:                 | NG             |
| Scale:                   | 1:250 metric   |
| Project Number:          | 19-0235        |
| DRAWING NUMBER:          | <b>L1 of 3</b> |

| REVISION SCHEDULE |           |                       |
|-------------------|-----------|-----------------------|
| #                 | DATE      | NOTES                 |
| 0                 | 12SEP2019 | Schematic for Pricing |
| 1                 | 31OCT2019 | Issued for DP         |
| 2                 | 05MAY2020 | Revised for DP        |
| 3                 | 08JUN2020 | Revised for DP        |

RECEIVED  
DP1169  
2020-JUN-10





THIS DRAWING IS NOT FINAL AND SHALL NOT BE USED FOR CONSTRUCTION WORK UNLESS IT HAS BEEN STAMPED AND SIGNED BY THE LANDSCAPE ARCHITECT. THE COPYRIGHTS TO ALL DESIGN AND DRAWINGS ARE THE PROPERTY OF AND SHALL BE SOLELY OWNED BY THE LANDSCAPE ARCHITECT. PLEASE DO NOT SCALE. ALL DIMENSIONS SHALL BE TO UNLESS OTHERWISE NOTED.

**1125 & 1145 Seafield Crescent**  
**Woodgrove Senior Citizen Housing Society**  
 Nanaimo, BC

**LEGENDS & NOTES**  
 Date: June 8, 2020  
 Drawn: CW  
 Checked: NG  
 Scale: AS NOTED  
 Project Number: 19-0235  
 DRAWING NUMBER: **L2** of **3**

| REVISION SCHEDULE |           | NOTES                 |    |
|-------------------|-----------|-----------------------|----|
| #                 | Date      | Description           | By |
| 0                 | 12SEP2019 | Schematic for Pricing |    |
| 1                 | 31OCT2019 | Issued for DP         |    |
| 2                 | 05MAY2020 | Revised for DP        |    |
| 3                 | 08JUN2020 | Revised for DP        |    |

RECEIVED  
 DP 116  
 2020-JUN-10  
 LANDSCAPE ARCHITECTURE

**PLANT LEGEND, SHRUBS - PHASE 2**

| SYMBOL                               | BOTANICAL / COMMON NAME   | SIZE      | SPACING   | QTY.    | NOTES  |
|--------------------------------------|---|-----------|-----------|---------|--|
| ⊙                                    | ARCTOSTAPHYLOS 'COMPACTA' STRAWBERRY TREE                           | #5 POT    | 1.5m O.C. | 10      | DROUGHT TOLERANT   |
| ⊙                                    | BERBERIS THUNBERGII 'ROSE GLOW' ROSE GLOW JAPANESE BARBERRY         | 1.0m      | 0.9m O.C. | 34      | SCREEN, DROUGHT TOLERANT   |
| ⊙                                    | CEANOTHUS 'VICTORIA' VICTORIA CALIFORNIA LILAC                      | #5 POT    | 1.2m O.C. | 39      | NATIVE CULTIVAR  |
| ⊙                                    | CORNUS SERICEA 'BUD 'S YELLOW' YELLOW TWIG DOGWOOD                  | #1 POT    | 1.0m      | 21      | NATIVE CULTIVAR  |
| ⊙                                    |   |           | 1.5m      | 21      | NORTH AND SOUTH MIN. LANDSCAPE TREATMENT AREAS INTERIOR RAINGARDEN |
| ⊙                                    | COTINUS COGGYGRIYA 'ANGOT' GOLDEN SPIRIT SMOKETREE                  | #5 POT    | SEE PLAN  | 12      | DROUGHT TOLERANT   |
| ⊙                                    | HAMAMELUS X INTERMEDIA 'DIANE' DIANE WITCH HAZEL                    | #5 POT    | SEE PLAN  | 3       | DROUGHT TOLERANT   |
| ⊙                                    | NANDINA DOMESTICA 'MOON BAY' MOON BAY HEAVENLY BAMBOO               | #2 POT    | 1.0m O.C. | 64      | DROUGHT TOLERANT   |
| ⊙                                    | OSMANTHUS HETEROPHYLLUS 'GOSHIKI' GOSHIKI FALSE HOLLY               | 1.0m      | 0.9m O.C. | 9       | SCREEN, DROUGHT TOLERANT   |
| ⊙                                    | PICEA PUNGENS 'GLAUCA GLOBOSA' DWARF COLORADO SPRUCE                | 1.0m      | 0.9m O.C. | 18      | SCREEN, DROUGHT TOLERANT   |
| ⊙                                    | POLYSTICHUM MUNITUM SWARTZERIA                                      | #1 POT    | 1.0m O.C. | 26      | NATIVE SPECIES   |
| ⊙                                    | RHOODOENDRON SSP. RHOODOENDRON                                      | #5 POT    | 1.2m O.C. | 26      | SHADE TOLERANT   |
| ⊙                                    | ROSA NOOTKATENSIS NOOTKA ROSE                                       | 1.0m      | 0.9m O.C. | 42      | SCREEN, NATIVE SPECIES   |
| ⊙                                    | TAXUS X MEDIA 'HICKSI' HICKS YEW                                    | 1.2m      | 1.0m O.C. | 21      | SHADE TOLERANT   |
| ⊙                                    | THUJA PLICATA 'EXCELSA' EXCELSA WESTERN RED CEDAR                   | 1.0m      | 0.9m O.C. | 40      | HEDGE, NATIVE CULTIVAR   |
| ⊙                                    | VIBURNUM BODANITENSE 'PINK DAWN' PINK DAWN VIBURNUM                 | #5 POT    | SEE PLAN  | 4       | DROUGHT TOLERANT   |
| ⊙                                    | VIBURNUM DAVIDI DAVIDS VIBURNUM                                     | #2 POT    | 1.0m O.C. | 34      | SHADE TOLERANT   |
| <b>PERENNIALS &amp; GROUNDCOVERS</b> |   |           |           |         |  |
| ⊙                                    | ARCTOSTAPHYLOS UVA-URSI KINKINICK                                   | #1 POT    | 1.0m O.C. | 63      | NATIVE SPECIES, DROUGHT TOLERANT                                   |
| ⊙                                    | ASTILBE 'SILVER PINK' & 'YOUNIQUE WHITE' LIGHT PINK & WHITE ASTILBE | #1 POT    | 0.75m     | 11      | SHADE TOLERANT   |
| ⊙                                    | BERGENIA CRASSIFOLIA 'BRESSINGHAM BEAUTY' MAGENTA FISSGLEEK         | #1 POT    | 0.6m      | 16      | SHADE TOLERANT   |
| ⊙                                    | CALAMAGROSTIS X ACUTIFLORA 'KARL FOERSTER' FEATHER REED GRASS       | #2 POT    | 1.0m      | 76      | ORNAMENTAL GRASS, RAINGARDEN                                       |
| ⊙                                    | CAREX OBLUPTA SLOUGH SEDGE  | 1.0cm POT | 0.45m     | 85      | NATIVE SPECIES   |
| ⊙                                    |   |           | FLUG      | 266     | SOUTH MIN. LANDSCAPE TREATMENT AREAS INTERIOR RAINGARDEN           |
| ⊙                                    | HAKONECHLOA MACRA 'ALUREOLA' GOLDEN JAPANESE FOREST GRASS           | #2 POT    | 0.6m      | 23      | SHADE TOLERANT   |
| ⊙                                    | JUNCUS EFFUSUS COMMON RUSH  | 1.0cm POT | 0.45m     | 90      | NATIVE SPECIES   |
| ⊙                                    |   |           | FLUG      | 195     | SOUTH MIN. LANDSCAPE TREATMENT AREAS INTERIOR RAINGARDEN           |
| ⊙                                    | ROSA MEDILAND 'IC' WHITE MEDILAND ROSE                              | #1 POT    | 1.0m O.C. | 71      | DROUGHT TOLERANT   |
| <b>LAWN</b>                          |   |           |           |         |  |
| ⊙                                    | SOD: CERTIFIED CANADA NO. 1   | SOD       |           | 190sq.m |  |

**TREE LEGEND, TREES - PHASE 2**

| SYMBOL | BOTANICAL / COMMON NAME   | SIZE     | SPACING                 | QTY. | NOTES   |
|--------|---|----------|-------------------------|------|---|
| ⊙      | ACER CIRCINATUM VINE MAPLE  | #5 POT   | SEE PLAN                | 9    | NATIVE SPECIES, SHADE TOLERANT                |
| ⊙      | ACER PALMATUM 'OSAKAZUKI' #4 'KATSURA' JAPANESE MAPLES            | #5 POT   | SEE PLAN                | 1    | PATIO TREE/ SPECIMEN, SHADE TOLERANT          |
| ⊙      | CARPINUS BETULUS 'FRANZ FONTAINE' COLUMNAR HORNBEAM               | 4cm CAL. | SEE PLAN                | 2    | DROUGHT TOLERANT, SHADE TOLERANT              |
| ⊙      | CHAMAECYPARIS NOOTKATENSIS 'JUBILEE' JUBILEE WEEPING ALASKA CEDAR | 2.0m     | SEE PLAN                | 7    | DROUGHT TOLERANT                              |
| ⊙      | MAGNOLIA 'GALAXY' GALAXY MAGNOLIA                                 | 4cm CAL. | SEE PLAN                | 2    | DROUGHT TOLERANT                              |
| ⊙      | NYSSA SYLVATICA 'TUPELO TOWER' TUPELO TOWER BLACK GUM             | 4cm CAL. | SEE PLAN                | 2    | DROUGHT TOLERANT                              |
| ⊙      | PRUNUS YEDONENSIS 'AKEBONO' AKEBONO JAPANESE FLOWERING CHERRY     | 6cm CAL. | 1.5m O.C. AVG. SEE PLAN | 6    | ORNAMENTAL STREET TREE TO MATCH (E) TO REMAIN |
| ⊙      | PYRUS CALLERYANA 'REDSPIRE' REDSPIRE ORNAMENTAL PEAR              | 6cm CAL. | 1.5m O.C. AVG. SEE PLAN | 3    | DROUGHT TOLERANT                              |
| ⊙      | TAXODIUM DISTICHUM BALD CYPRESS                                   | 2.0m     | SEE PLAN                | 1    | RAINGARDEN, MOISTURE TOLERANT                 |
| ⊙      | TILIA CORDATA 'GREENSPIRE' GREENSPIRE LITTLELEAF LINDEN           | 6cm CAL. | 1.5m O.C. AVG. SEE PLAN | 5    | DROUGHT TOLERANT                              |

**IRRIGATION EQUIPMENT LEGEND BUILDING 1**

| SYMBOL | MANUFACTURER    | MODEL           | DESCRIPTION   |
|--------|-----------------|-----------------|---|
| ⊙      | PER. MECHANICAL | PER. MECHANICAL | 50mm (2") DOUBLE CHECK VALVE ASSEMBLY PER CSA STANDARDS INSTALLED IN MECHANICAL ROOM  |
| ⊙      | HUNTER          | TBD             | AUTOMATIC IRRIGATION CONTROLLER IN PLASTIC OR METAL ENCLOSURE MOUNTED IN MECHANICAL ROOM  |
| ⊙      | HUNTER          | W55-SEN         | WIRELESS SOLAR-SYNC SENSOR ON SOUTH-FACING EAVE.  |
| ⊙      |                 | SCHEDULE 40     | 50mm (2") PVC MAINLINE  |
| ⊙      |                 | SCHEDULE 40     | PVC SLEEVES UNDER ALL PAVING MIN. TYP: MAINLINE & CONTROL WIRE: 150mm (6") LATERALS & CONTROL WIRE: 100mm (4") BURIAL DEPTH TO MATCH DEPTH OF CARRIED PIPE. |

**IRRIGATION EQUIPMENT LEGEND BUILDING 2**

| SYMBOL | MANUFACTURER    | MODEL           | DESCRIPTION   |
|--------|-----------------|-----------------|---|
| ⊙      | PER. MECHANICAL | PER. MECHANICAL | 38mm (1.5") DOUBLE CHECK VALVE ASSEMBLY PER CSA STANDARDS INSTALLED IN MECHANICAL ROOM  |
| ⊙      | HUNTER          | TBD             | AUTOMATIC IRRIGATION CONTROLLER IN PLASTIC OR METAL ENCLOSURE MOUNTED IN MECHANICAL ROOM  |
| ⊙      | HUNTER          | W55-SEN         | WIRELESS SOLAR-SYNC SENSOR ON SOUTH-FACING EAVE.  |
| ⊙      |                 | SCHEDULE 40     | 38mm (1.5") PVC MAINLINE  |
| ⊙      |                 | SCHEDULE 40     | PVC SLEEVES UNDER ALL PAVING MIN. TYP: MAINLINE & CONTROL WIRE: 150mm (6") LATERALS & CONTROL WIRE: 100mm (4") BURIAL DEPTH TO MATCH DEPTH OF CARRIED PIPE. |

**IRRIGATION NOTES**

- THE IRRIGATION SYSTEM SHALL BE AUTOMATICALLY CONTROLLED WITH SMART "ET" EQUIPMENT AND SHALL OPERATE WITHIN THE CITY OF NANAIMO WATER RESTRICTION SCHEDULE.
- THE IRRIGATION SYSTEM SHALL MEET OR EXCEED THE MOST CURRENT STANDARDS AND SPECIFICATIONS SET OUT BY THE IRRIGATION INDUSTRY ASSOCIATION OF BRITISH COLUMBIA (IABIC) AS REFERENCED IN THE MOST CURRENT EDITION OF THE CANADIAN LANDSCAPE STANDARD PREPARED BY THE CANADIAN SOCIETY OF LANDSCAPE ARCHITECTS (CSLA) & CANADIAN NURSERY LANDSCAPE ASSOCIATION (CNLA).
- IRRIGATION EMISSION DEVICES SHALL BE LOW VOLUME ROTARY NOZZLES OR MICRO DRIP EQUIPMENT.
- THE PLACEMENT AND RADIUS OF SPRINKLERS SHALL BE ADJUSTED AS REQUIRED BY FIELD CONDITIONS TO ACHIEVE FULL COVERAGE OF ALL PLANTED AREAS AND TO MINIMIZE OVER-SPRAY ONTO ADJACENT HARD SURFACES, FENCES AND PROPERTY LINES.
- ALL PIPING UNDER PAVING SHALL BE INSTALLED IN SEPARATE SCHEDULE 40 SLEEVES AT A MINIMUM DEPTH OF 600mm WITH 150mm OF SAND BACKFILL ABOVE AND BELOW PIPE. ALL WIRING UNDER PAVING SHALL BE INSTALLED IN SEPARATE SCHEDULE 40 PVC CONDUIT. ALL SLEEVES AND CONDUIT SHALL BE INSTALLED PRIOR TO PAVEMENT INSTALLATION AND SHALL EXTEND 150mm BEYOND EDGE OF PAVEMENT OR CURB. BACKFILL FOR SLEEVES SHALL BE COMPACTED TO THE SPECIFIED DENSITY FOR THE SUBGRADE.
- ESTABLISHMENT WATERING SHALL MEET OR EXCEED THE LATEST EDITION OF THE CANADIAN LANDSCAPE STANDARD.

**PLANT LEGEND - PHASE 1**

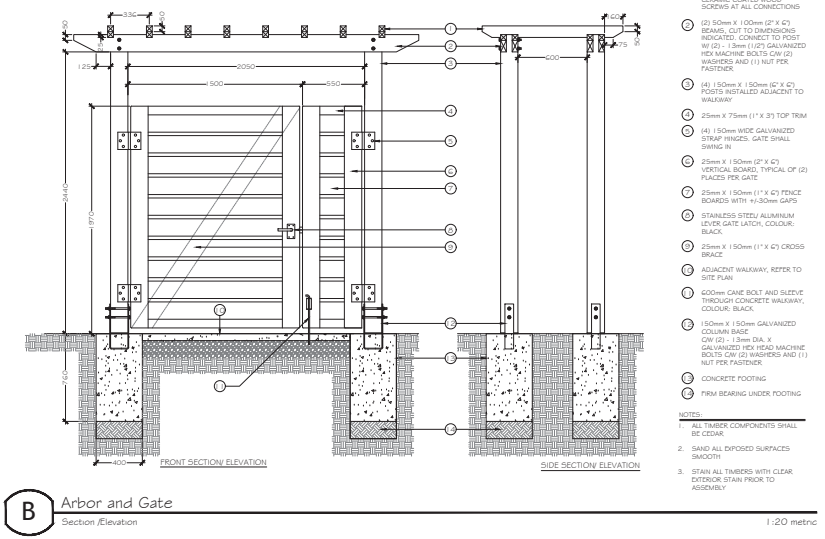
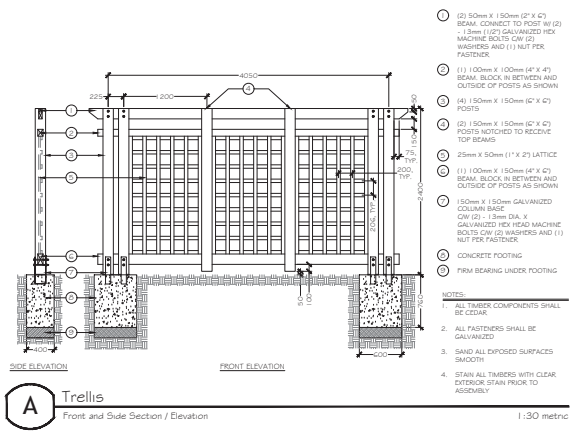
| SYMBOL                               | BOTANICAL / COMMON NAME   | SIZE      | SPACING                 | QTY. | NOTES                                |
|--------------------------------------|---|-----------|-------------------------|------|--------------------------------------|
| ⊙                                    | ACER CIRCINATUM VINE MAPLE  | #5 POT    | SEE PLAN                | 1    | NATIVE SPECIES, SHADE TOLERANT       |
| ⊙                                    | ACER PALMATUM 'OSAKAZUKI' #4 'KATSURA' JAPANESE MAPLES              | #5 POT    | SEE PLAN                | 8    | PATIO TREE/ SPECIMEN, SHADE TOLERANT |
| ⊙                                    | CARPINUS BETULUS 'FRANZ FONTAINE' COLUMNAR HORNBEAM                 | 4cm CAL.  | SEE PLAN                | 1    | DROUGHT TOLERANT, SHADE TOLERANT     |
| ⊙                                    | CEDRUS ATLANTICA 'GLAUCA 'PASTIGIATA' COLUMNAR BLUE ATLAS CEDAR     | 2.0m      | SEE PLAN                | 1    | DROUGHT TOLERANT                     |
| ⊙                                    | NYSSA SYLVATICA 'TUPELO TOWER' TUPELO TOWER BLACK GUM               | 6cm CAL.  | 1.0m O.C. AVG. SEE PLAN | 11   | RAINGARDEN, MOISTURE TOLERANT        |
| <b>SHRUBS</b>                        |   |           |                         |      |                                      |
| ⊙                                    | ARBITUS UNEDO 'COMPACTA' STRAWBERRY TREE                            | #5 POT    | 1.5m O.C.               | 9    | DROUGHT TOLERANT                     |
| ⊙                                    | CORNUS SERICEA 'BUD 'S YELLOW' YELLOW TWIG DOGWOOD                  | #1 POT    | 1.0m O.C.               | 18   | NATIVE CULTIVAR                      |
| ⊙                                    | OSMANTHUS HETEROPHYLLUS 'GOSHIKI' GOSHIKI FALSE HOLLY               | 1.0m      | 0.9m O.C.               | 60   | SCREEN, DROUGHT TOLERANT             |
| ⊙                                    | POLYSTICHUM MUNITUM SWORDFERN                                       | #1 POT    | 1.0m O.C.               | 32   | NATIVE SPECIES                       |
| ⊙                                    | RHOODOENDRON SSP. RHOODOENDRON                                      | #5 POT    | 1.2m O.C.               | 22   | SHADE TOLERANT                       |
| ⊙                                    | ROSA NOOTKATENSIS NOOTKA ROSE                                       | 1.0m      | 0.9m O.C.               | 56   | SCREEN, NATIVE SPECIES               |
| ⊙                                    | TAXUS X MEDIA 'HICKSI' HICKS YEW                                    | 1.2m      | 1.0m O.C.               | 15   | SHADE TOLERANT                       |
| ⊙                                    | THUJA PLICATA 'EXCELSA' EXCELSA WESTERN RED CEDAR                   | 1.0m      | 0.9m O.C.               | 6    | HEDGE, NATIVE CULTIVAR               |
| ⊙                                    | VIBURNUM DAVIDI DAVIDS VIBURNUM                                     | #2 POT    | 1.0m O.C.               | 43   | SHADE TOLERANT                       |
| <b>PERENNIALS &amp; GROUNDCOVERS</b> |   |           |                         |      |                                      |
| ⊙                                    | ARCTOSTAPHYLOS UVA-URSI KINKINICK                                   | #1 POT    | 1.0m O.C.               | 46   | NATIVE SPECIES, DROUGHT TOLERANT     |
| ⊙                                    | ASTILBE 'SILVER PINK' & 'YOUNIQUE WHITE' LIGHT PINK & WHITE ASTILBE | #1 POT    | 0.75m                   | 11   | SHADE TOLERANT                       |
| ⊙                                    | BERGENIA CRASSIFOLIA 'BRESSINGHAM BEAUTY' MAGENTA FISSGLEEK         | #1 POT    | 0.6m                    | 37   | SHADE TOLERANT                       |
| ⊙                                    | CALAMAGROSTIS X ACUTIFLORA 'KARL FOERSTER' FEATHER REED GRASS       | #2 POT    | 1.0m                    | 17   | ORNAMENTAL GRASS, RAINGARDEN         |
| ⊙                                    | CAREX OBLUPTA SLOUGH SEDGE  | 1.0cm POT | 0.45m                   | 370  | NATIVE SPECIES                       |
| ⊙                                    | JUNCUS EFFUSUS COMMON RUSH  | 1.0cm POT | 0.45m                   | 90   | NATIVE SPECIES                       |
| ⊙                                    | ROSA MEDILAND 'IC' WHITE MEDILAND ROSE                              | #1 POT    | 1.0m O.C.               | 21   | DROUGHT TOLERANT                     |
| <b>VINE</b>                          |   |           |                         |      |                                      |
| ⊙                                    | CLEMATIS ARMANDI EVERGREEN CLEMATIS                                 | #1 POT    | 1.2m O.C.               | 9    | SHADE TOLERANT, (3) PER TRELLIS      |

**PLANTING NOTES**

- ALL LANDSCAPE INSTALLATION AND MAINTENANCE SHALL MEET OR EXCEED THE MOST RECENT STANDARDS SET OUT BY THE CANADIAN NURSERY LANDSCAPE ASSOCIATION (CNLA) / CANADIAN SOCIETY OF LANDSCAPE ARCHITECTS (CSLA) / CANADIAN LANDSCAPE STANDARD.
- GROWING MEDIUM SHALL MEET OR EXCEED THE PROPERTIES OUTLINED THE CANADIAN LANDSCAPE STANDARD PER SECTION 6 & GROWING MEDIUM, TABLE T-6.3.5.2. PROPERTIES FOR GROWING MEDIA: LEVEL 2 'GROOMED' - ZL.  
 GROWING MEDIUM DEPTHS: RAINGARDENS/ SWALES - 450mm  
 SHRUBS - 450mm  
 LAWN - 100mm  
 TREES - 600mm BELOW AND AROUND ROOTBALL
- MULCH SHALL BE COMPOST PER SECTION 1.0 MULCHING OF THE CANADIAN LANDSCAPE STANDARD. MULCH DEPTH SHALL BE 75mm MINIMUM OVER ALL TREE, SHRUBS AND GROUNDCOVER PLANTING AREAS.
- PLANT MATERIAL QUALITY, TRANSPORT AND HANDLING SHALL COMPLY WITH CNLA STANDARDS FOR NURSERY STOCK.
- ALL TREE, SHRUB, GROUNDCOVER AND LAWN AREAS SHALL BE WATERED VIA AN UNDERGROUND AUTOMATIC IRRIGATION SYSTEM UTILIZING SMART (ET) WEATHER-BASED IRRIGATION CONTROL. IRRIGATION EMISSION DEVICES SHALL BE HIGH EFFICIENCY LOW VOLUME ROTARY NOZZLES OR DRIP IRRIGATION EQUIPMENT.
- PLANT QUANTITIES ARE FOR INFORMATION ONLY. IN CASE OF ANY DISCREPANCY THE PLAN SHALL GOVERN.
- ALL PLANT MATERIAL SHALL MATCH TYPE AND SPECIES AS INDICATED ON THE PLANTING LEGEND. CONTACT THE LANDSCAPE ARCHITECT FOR APPROVAL OF ANY SUBSTITUTIONS. NO SUBSTITUTIONS WILL BE ACCEPTED WITHOUT PRIOR WRITTEN APPROVAL OF THE LANDSCAPE ARCHITECT.
- CHECK FOR LOCATIONS OF WATER LINES AND OTHER UNDERGROUND SERVICES PRIOR TO DIGGING TREE PITS. EXCAVATED PLANT PITS SHALL HAVE POSITIVE DRAINAGE. PLANT PITS WHEN FULLY FLOODED WITH WATER SHALL DRAIN WITHIN ONE HOUR AFTER FILLING.
- NO PLANTS REQUIRING PRUNING OF MAJOR BRANCHES DUE TO DISEASE, DAMAGE OR POOR FORM WILL BE ACCEPTED.
- ALL CALIPE-Stock TREES SHALL BE B & B IN WIRE BASKETS.



THIS DRAWING IS NOT FINAL AND SHALL NOT BE USED FOR CONSTRUCTION WORK UNTIL IT HAS BEEN STAMPED AND SIGNED BY THE LICENSED ARCHITECT. THE COPYRIGHT TO ALL DESIGN AND DRAWINGS ARE THE PROPERTY OF MACDONALD GRAY CONSULTANTS. REPRODUCTION OR USE FOR ANY PURPOSE OTHER THAN THAT AUTHORIZED BY MACDONALD GRAY CONSULTANTS IS PROHIBITED.



**1125 & 1145 Seafield Crescent**  
**Woodgrove Senior Citizen Housing Society**  
Nanaimo, BC

**DETAILS**

Date: June 8, 2020  
 Drawn: CW  
 Checked: NG  
 Scale: AS NOTED  
 Project Number: 19-0235  
 DRAWING NUMBER: **L3** of **3**

| # | Date      | NOTES                 |
|---|-----------|-----------------------|
| 0 | 12SEP2019 | Schematic for Pricing |
| 1 | 31OCT2019 | Issued for DP         |
| 2 | 05MAY2020 | Reissued for DP       |
| 3 | 08JUN2020 | Reissued for DP       |
|   |           |                       |
|   |           |                       |

RECEIVED  
DP 1155  
2020-JUN-10  
CLIXTAD PUBLISHING