

ATTACHMENT E RIDGELINE VIEW



1 Hillside Aerial View
not to scale

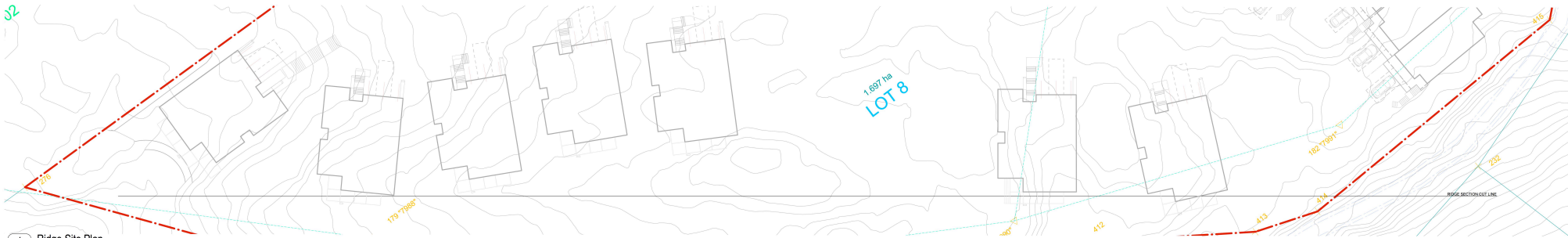


2 Hillside Aerial View
not to scale



3 Orthographic Project Elevation

View of Single Detached Units stepped back from the Ridgeline.



4 Ridge Site Plan
not to scale

380 COTTLE PLACE

Development Permit Application

The ridgeline of Cottle Place, 380 Cottle Place, Nanaimo, British Columbia

Steve Tranfield
250.729.1914 steve@modev.ca
modev
modev.ca



Hillel
Architecture
118-1200 West Hill Street
Nanaimo, BC V9S 2G1
Tel: 250.753.1111
Fax: 250.753.1112

Development Permit Application
September 21, 2017

Project: **380 Cottle Place**
Developer: Steve Tranfield
380 Cottle Place, Nanaimo, British Columbia

Drawing 001: Hillside Aerial Views
Project Elevation / Ridge Site Plan

Sheet No. A1.5

RECEIVED
DP1182
2020-APR-02
Current Planning