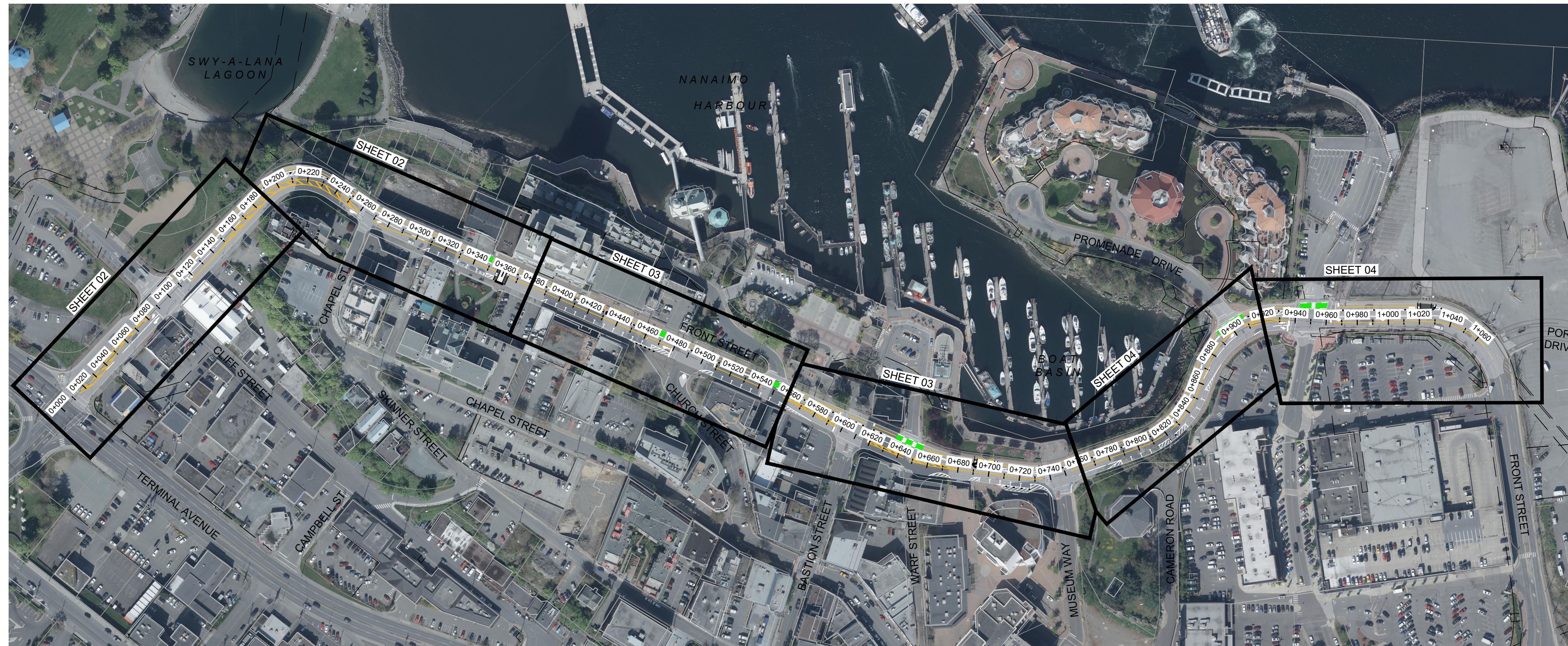
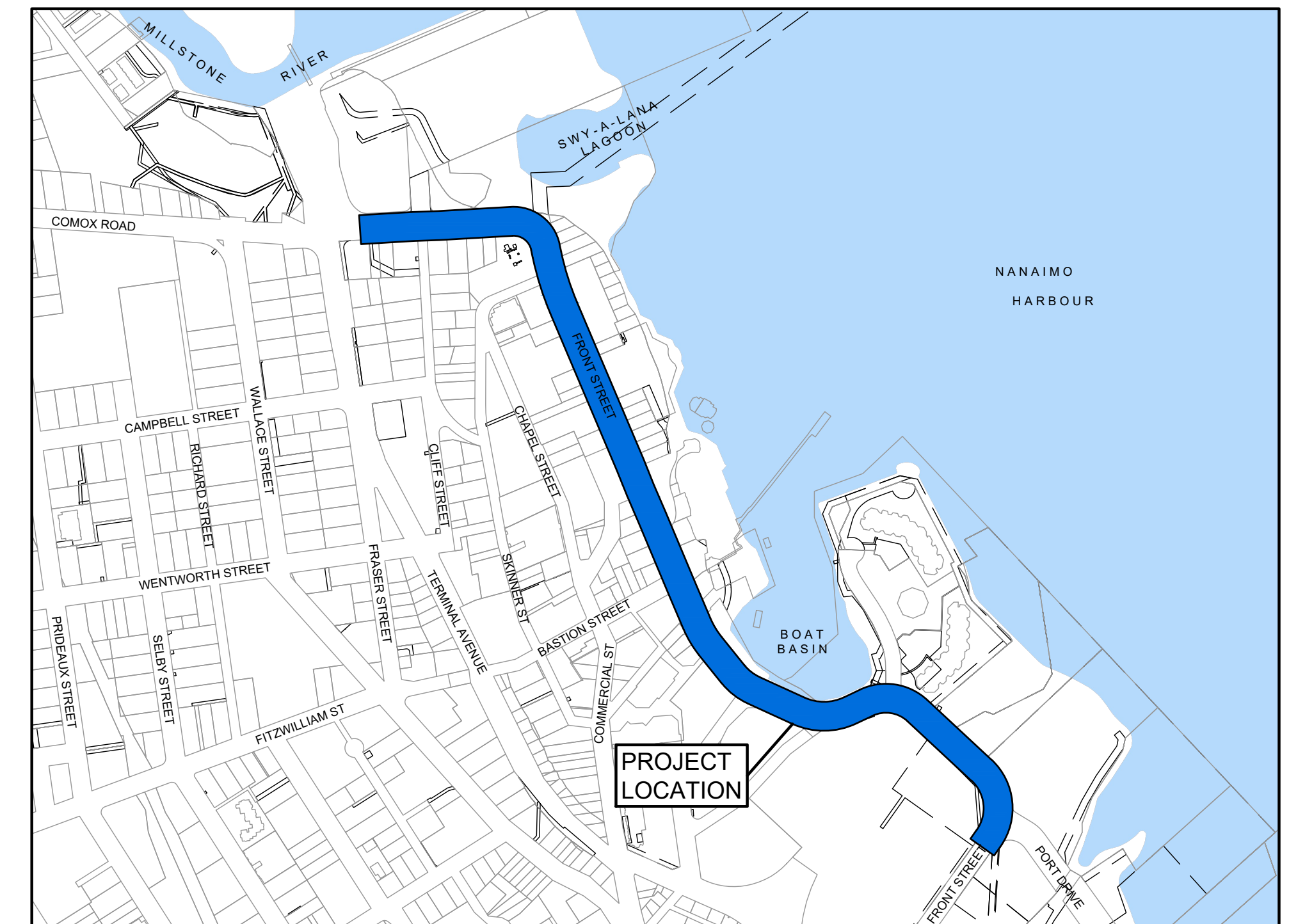


FRONT STREET - TERMINAL AVENUE TO PORT DRIVE PROPOSED CYCLE TRACK



KEY PLAN
1:2000



LOCATION PLAN
1:5000

SHEET No.	DRAWING No.	PROJECT	TITLE
01		FRONT STREET - TERMINAL AVENUE TO PORT DRIVE PROPOSED CYCLE TRACK	COVER SHEET KEY PLAN, LOCATION PLAN
02		FRONT STREET - TERMINAL AVENUE TO PORT DRIVE PROPOSED CYCLE TRACK	FRONT STREET STA. 0+000 TO 0+380
03		FRONT STREET - TERMINAL AVENUE TO PORT DRIVE PROPOSED CYCLE TRACK	FRONT STREET STA. 0+380 TO 0+760
04		FRONT STREET - TERMINAL AVENUE TO PORT DRIVE PROPOSED CYCLE TRACK	FRONT STREET STA. 0+760 TO 1+060
05		FRONT STREET - TERMINAL AVENUE TO PORT DRIVE PROPOSED CYCLE TRACK	DETAILS & TYPICAL SECTIONS

GENERAL NOTES:

- ALL CONSTRUCTION TO BE IN ACCORDANCE WITH CITY OF NANAIMO MANUAL OF ENGINEERING STANDARDS AND SPECIFICATIONS (McESS).
- ALL LOCATIONS AND ELEVATIONS OF EXISTING UTILITIES SHOWN ARE APPROXIMATE ONLY AND SHOULD BE CONFIRMED BY USE OF A PIPE LOCATOR AND MANUAL DIGGING. ALL OR ANY STRUCTURES NOT NECESSARILY SHOWN.
- COORDINATES ARE GROUND LEVEL (UTM NAD 83 WITH COMBINED SCALE FACTOR OF 1/0.99985) AND ALL ELEVATIONS ARE TO GEODETIC DATUM.
- LOCATION OF SERVICE CONNECTIONS TO BE DETERMINED ON SITE UNLESS SHOWN OTHERWISE.
- ANY ALTERNATIVES TO SPECIFIED MATERIALS OR APPURTENANCES TO BE APPROVED BY THE CITY ENGINEER PRIOR TO CONSTRUCTION.
- THE LOCATIONS OF EXISTING SERVICES ARE APPROXIMATE AND SHALL BE CONFIRMED IN THE FIELD BY THE CONTRACTOR PRIOR TO CONSTRUCTION. EXISTING AND PROPOSED SERVICES MAY REQUIRE ADJUSTMENT WHERE A CONFLICT OCCURS. THE ENGINEER SHALL BE NOTIFIED OF ANY CONFLICT.
- TRENCHING DETAIL TO BE AS CITY OF NANAIMO STANDARD DWG T-1. TRAVELED AREA BACKFILL TO BE IMPORTED GRANULAR MATERIAL COMPACTED TO MINIMUM 95% MODIFIED PROCTOR, UNLESS OTHERWISE APPROVED BY THE ENGINEER.
- ASPHALT RESTORATION TO BE AS CITY OF NANAIMO STANDARD DWG T-4 OR T-4A PERMANENT PAVEMENT RESTORATION.
- ALL DISTURBED SURFACES TO BE RESTORED TO EXISTING CONDITION OR BETTER.

PAVEMENT MARKING & SIGNAGE NOTES:

- ALL PAVEMENT MARKINGS ARE TO BE THERMOPLASTIC.
- BIKE LANE SYMBOLS AND BIKE LANE PAVEMENT MARKINGS TO ADHERE TO 'BIKEWAY CONTROL GUIDELINES FOR CANADA - SECOND EDITION' OF TRANSPORTATION ASSOCIATION OF CANADA (TAC)
- LINE MARKINGS TO BE 100mm WIDE UNLESS NOTED OTHERWISE.
- ALL STOP BARS TO BE 600mm WIDE.
- ALL ARROW, BIKE LANE, PARKING AND CROSSWALK BARS TO BE WHITE.
- OUTSIDE EDGE OF CROSSWALK TO 0.50m FROM CURB ALIGNMENT. ALL CROSSWALKS TO BE 3.0m WIDE.
- ALL SIGNS TO BE HIGH INTENSITY WITH ANTI-GRAFFITI OVER LAMINATED EXCEPT WHERE NOTED. WARNING SIGNS ARE DIAMOND GRADE (GLOW YELLOW).
- ALL STREET SIGNAGE AS PER MANUAL OF UNIFORM TRAFFIC CONTROL DEVICES OF CANADA (MUTCD), TAC BIKEWAY TRAFFIC CONTROL GUIDELINES FOR CANADA - SECOND EDITION AND BC ACTIVE TRANSPORTATION DESIGN GUIDE.

PRELIMINARY
NOT FOR CONSTRUCTION



Suite 1
1351 Estevan Road
Nanaimo BC
Canada V9S 3Y3
Tel 250 716 3336

CoN Dwg No. 00000

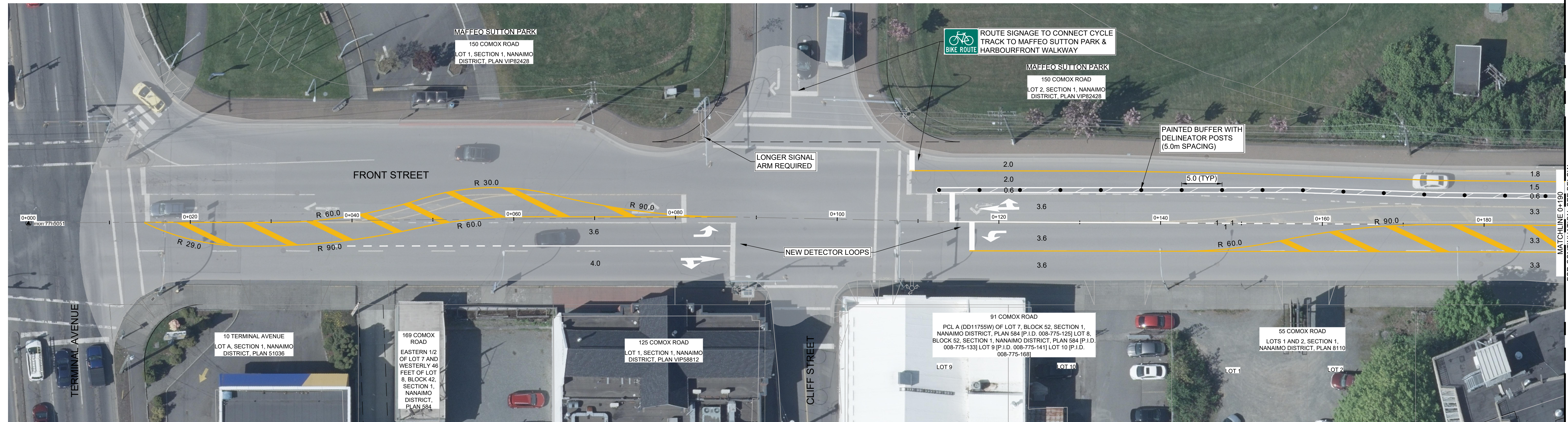
Eng File No. 5220.01.CXXXXX

Sheet 01 of 05

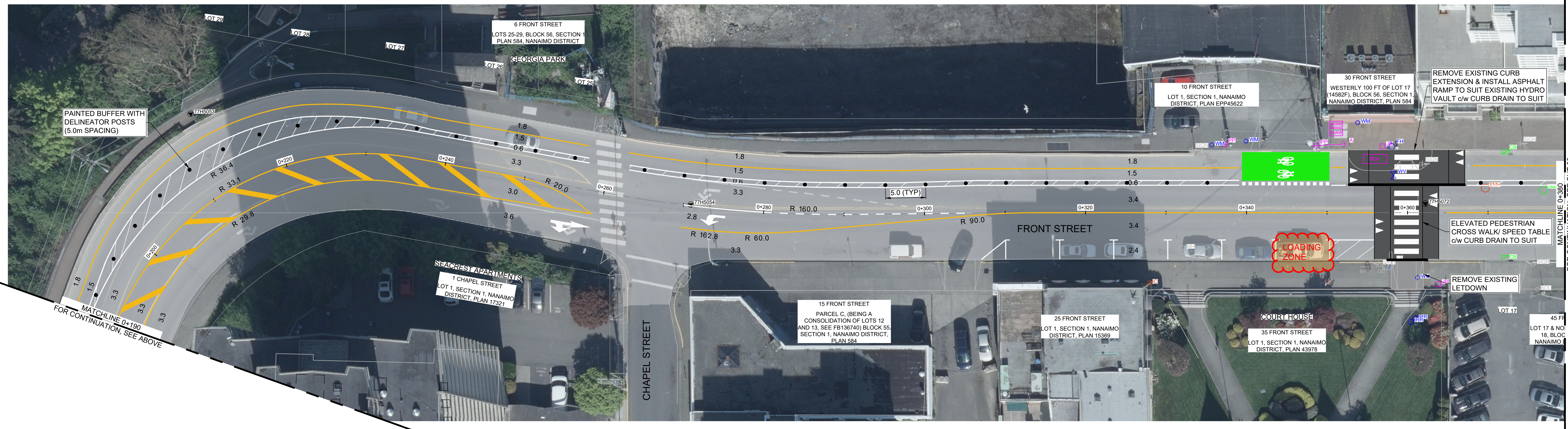
Consultant
Dwg No. 2231-16554-1-001

3.2.2020

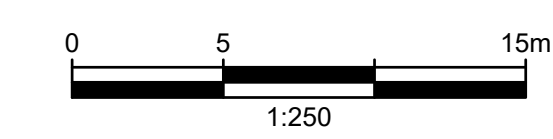
Z:\PROJ-ACTIVE\16554-01 CON - FRONT ST. TRACK DETAILED DESIGN & CONST\10.0 DRAWINGS\1 - ACTIVE\231-16554-1-DESIGN-011



MATCHLINE 0+130
FOR CONTINUATION, SEE BELOW



MATCHLINE 0+380
FOR CONTINUATION, SEE SHIT 03



NOTES:
1. FOR GENERAL NOTES, SEE SHIT 01.

Z:\PROJECTS\1654-01\CON - FRONT ST - TRACK DETAILED DESIGN & CONSTRUCTION DRAWINGS\1 - ACTIVE\2021-1654-1-DESIGN-DP11

Reference data	77H5051	FRONT & TERMINAL	EL: 8.445
	82H5656	FRONT & BASTION	EL: 11.278
	77H5010	FRONT & PORT	EL: 5.408

PRELIMINARY
NOT FOR CONSTRUCTION

McElhanney

Suite 1
1351 Estevan Road
Nanaimo BC
Canada V8S 3Y3
Tel 250 716 3338

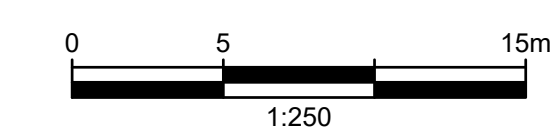
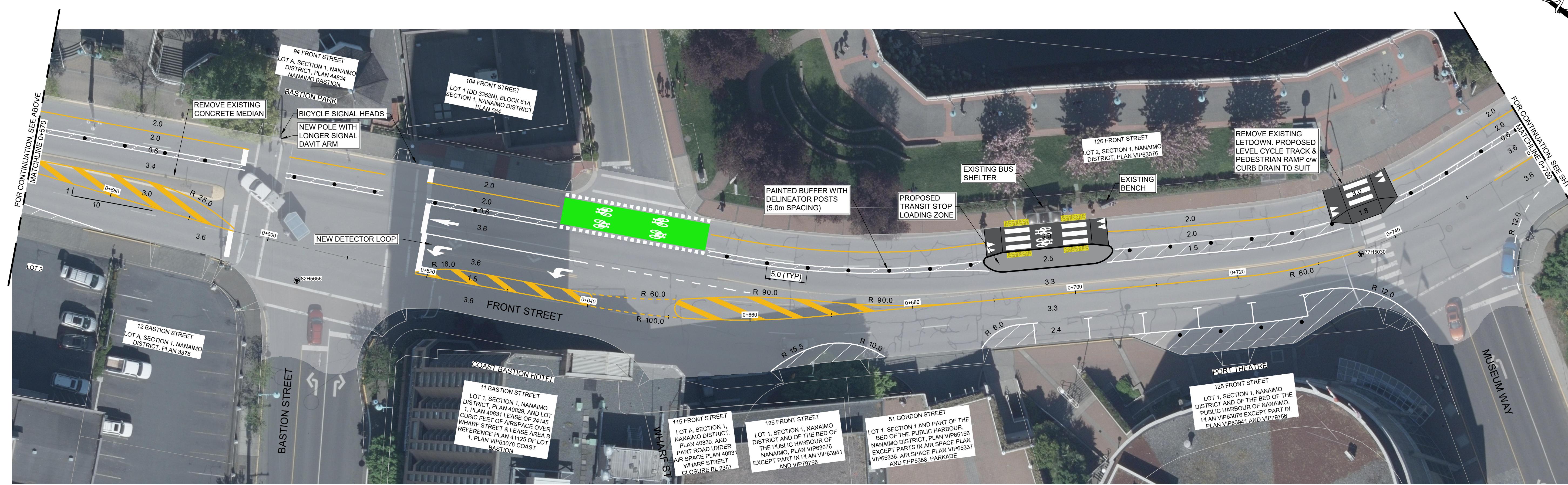
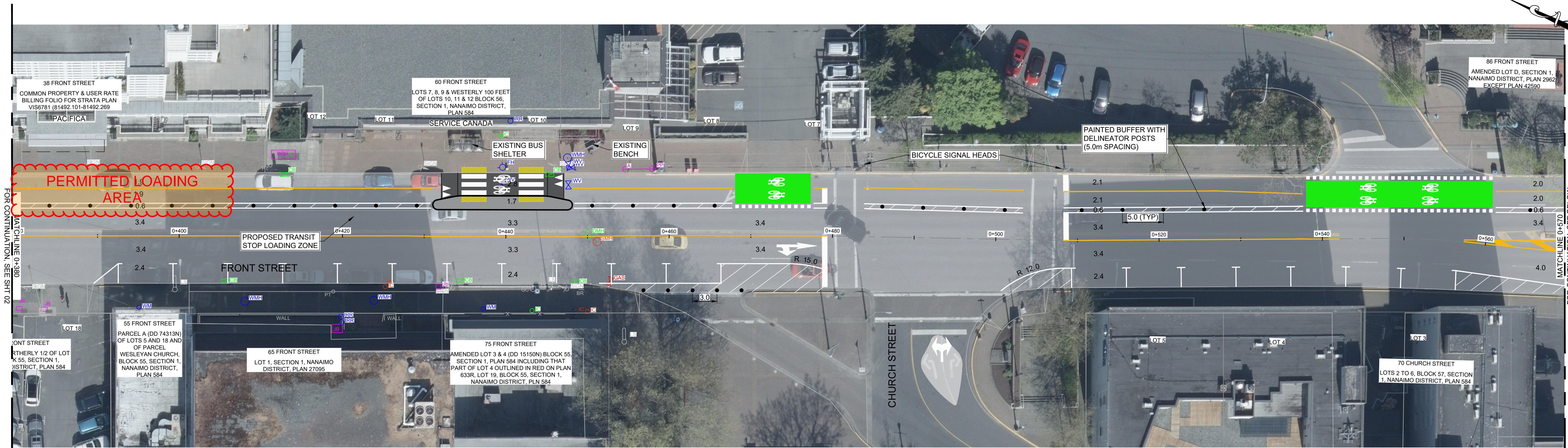
No.	Date	By	Revisions	Eng
PC	2020-03-02	KB	ISSUED FOR DESIGN REVIEW	MM
PB	2020-02-19	KB	ISSUED FOR DESIGN REVIEW	MM
PA	2020-01-31	KB	ISSUED FOR PRELIMINARY REVIEW	MM

Design by	Date	
KB	JAN 2020	
Drawn by		
KB	JAN 2020	
Checked by		
MM	JAN 2020	
Approved by		



Scale	Horiz: 1:250	Vert: NA
Consultant Dwg No.	2231-1654-1-101	Sheet 02 of 05
Eng File No.		
CoN Dwg No.		

Project	FRONT STREET - TERMINAL AVENUE TO PORT DRIVE PROPOSED CYCLE TRACK
Title	FRONT STREET STA: 0+000 TO 0+380



NOTES:
1. FOR GENERAL NOTES, SEE SHT 01.

Z:\PROJECTS\16554-01\CON - FRONT ST. TRACK DETAILED DESIGN & CONSTRUCTION\DRAWINGS\1 - ACTIVE\2311-16554-1-DESIGN-DPTT

Reference data	
77H5051	FRONT & TERMINAL EL: 8.465
82H5656	FRONT & BASTION EL: 11.278
77H5010	FRONT & PORT EL: 5.408

PRELIMINARY
NOT FOR CONSTRUCTION

McElhanney
Suite 1
1351 Estevan Road
Nanaimo BC
Canada V8S 3Y3
Tel 250 716 3338

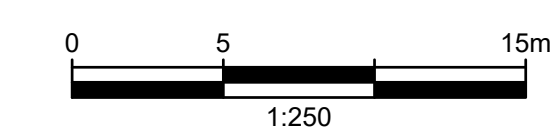
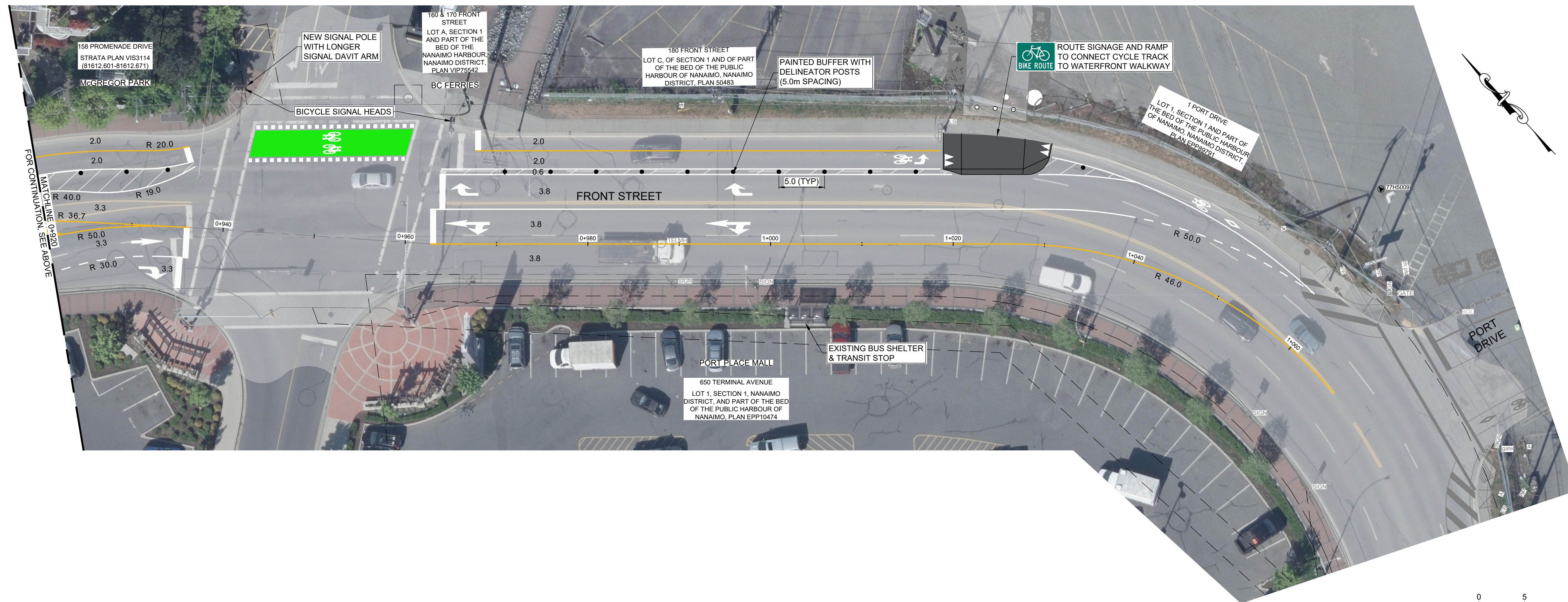
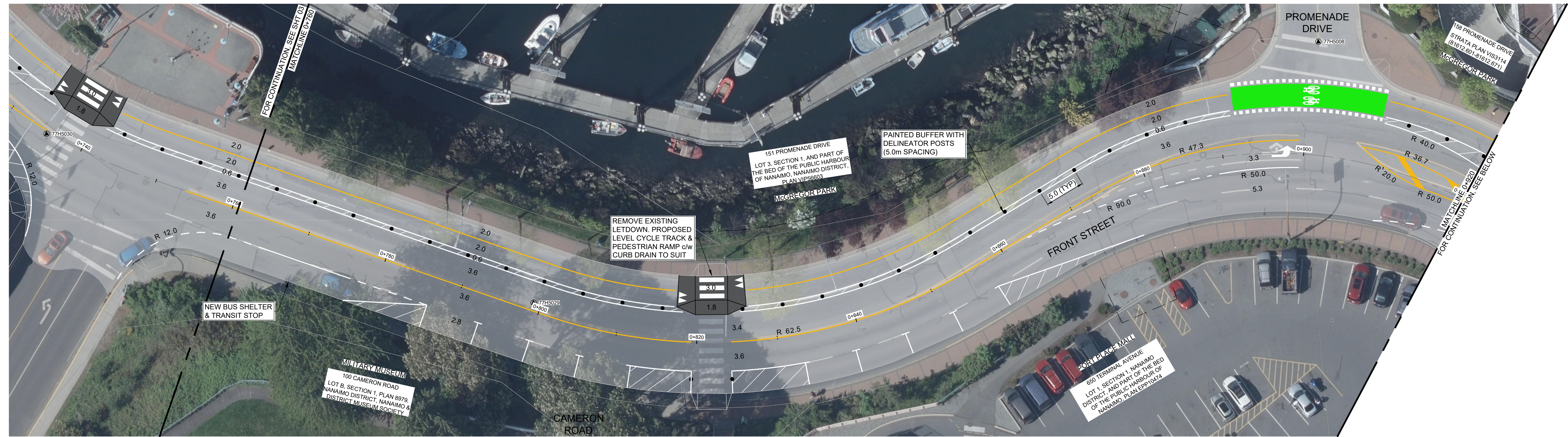
No.	Date	By	Revisions	Eng.
PC	2020-03-02	KB	ISSUED FOR DESIGN REVIEW	MM
PB	2020-02-19	KB	ISSUED FOR DESIGN REVIEW	MM
PA	2020-02-14	KB	ISSUED FOR PRELIMINARY REVIEW	MM

Design by	Date
KB	JAN 2020
Drawn by	
KB	JAN 2020
Checked by	
MM	JAN 2020
Approved by	



Scale	Horiz: 1:250	Vert: NA
Consultant Dwg No.	2231-16554-1-102	
Sheet	03 of 05	
Eng File No.		
CoN Dwg No.		

Project	FRONT STREET - TERMINAL AVENUE TO PORT DRIVE PROPOSED CYCLE TRACK
Title	FRONT STREET STA: 0+380 TO 0+760



NOTES:
1. FOR GENERAL NOTES, SEE SHT 01.

Z:\PROJECTS\16554-01-CON - FRONT ST. TRACK DETAILED DESIGN & CONSTRUCTION DRAWINGS\1 - ACTIVE\16554-1-DESIGN-DPTT

Reference data	
77H5051	FRONT & TERMINAL EL: 9.445
82H5656	FRONT & BASTION EL: 11.278
77H5010	FRONT & PORT EL: 5.408

PRELIMINARY

NOT FOR CONSTRUCTION

Suite 1
1351 Estevan Road
Nanaimo BC
Canada V8S 3Y3
Tel 250 716 3338

No.	Date	By	Revisions	Eng.
PC	2020-03-02	KB	ISSUED FOR DESIGN REVIEW	MM
PB	2020-02-19	KB	ISSUED FOR DESIGN REVIEW	MM
PA	2020-01-31	KB	ISSUED FOR PRELIMINARY REVIEW	MM

Design by	Date
KB	JAN 2020
Drawn by	Date
KB	JAN 2020
Checked by	Date
MM	JAN 2020
Approved by	Date



Scale	Horizontal	Vertical
1:250	NA	NA
Consultant Dwg No.	2231-16554-1-103	
Sheet	04 of 05	
Eng File No.		
CoN Dwg No.		

Project	FRONT STREET - TERMINAL AVENUE TO PORT DRIVE PROPOSED CYCLE TRACK
Title	FRONT STREET STA: 0+760 TO 1+060