

ATTACHMENT F LANDSCAPE PLAN

LEGEND

| | |
|--|---|
| | PROPERTY LINE |
| | EXTENT OF ROOF OVERHEAD |
| | EXISTING TREE TO BE REMOVED - MANAGED BY PROJECT ARBORIST |
| | EXISTING TREE TO BE RETAINED/ PROTECTED - MANAGED BY PROJECT ARBORIST |
| | PROPOSED TREES REFER TO PLANTING PLAN FOR SPECIES |

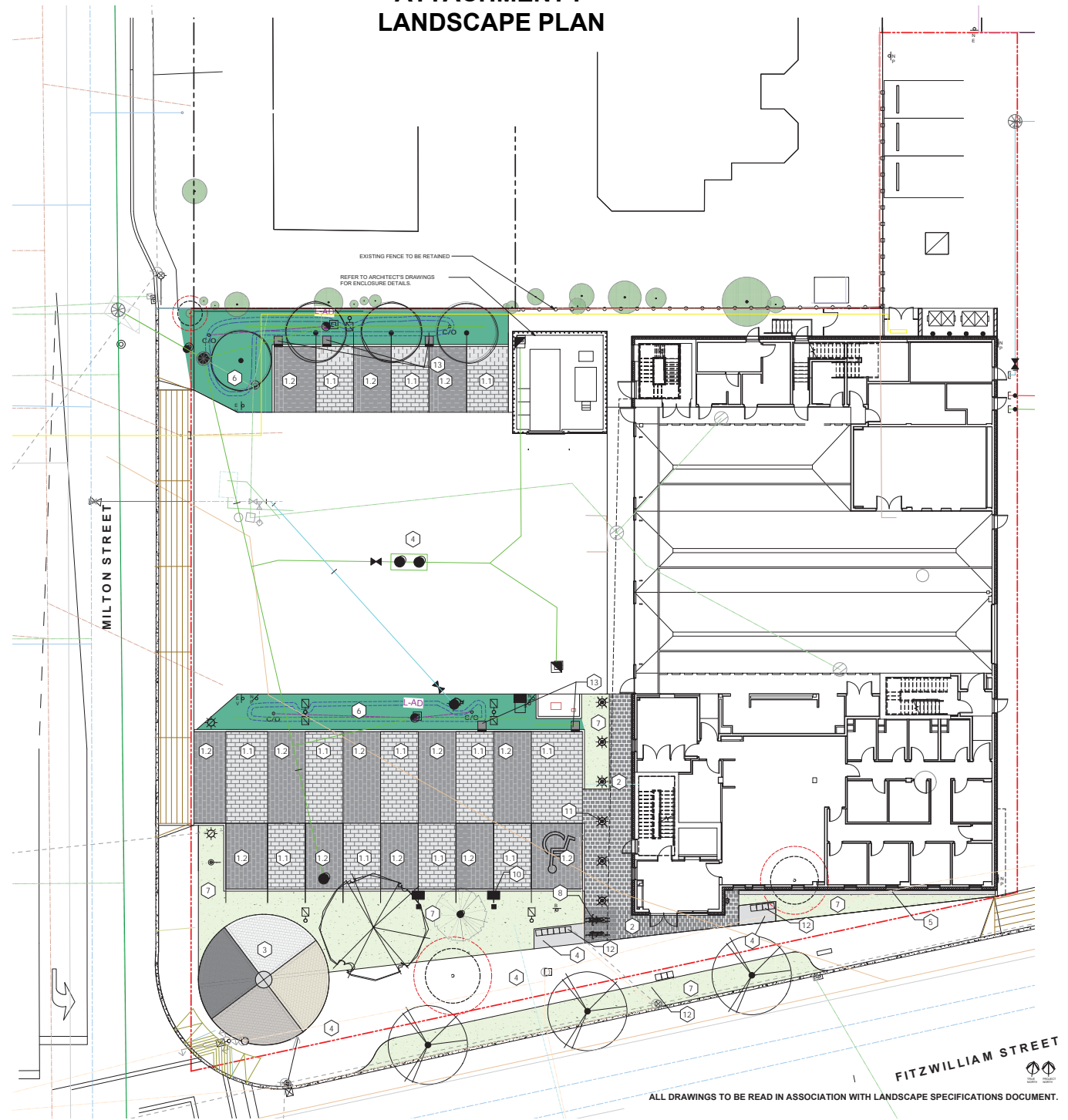
| | |
|---------------------|--|
| LANDSCAPE MATERIALS | |
| | 1. PARKING STALL PAVERS - CONCRETE UNIT PAVING EPOXYCRETE VSS COLLECTION 75 X 300 X 108MM. GREY COLOUR. 90 DEGREE RUNNING BOND. |
| | 2. PARKING STALL PAVERS - CONCRETE UNIT PAVING EPOXYCRETE VSS COLLECTION 75 X 300 X 108MM. CHARCOAL COLOUR RUNNING BOND. |
| | 3. WALKWAY PAVERS - CONCRETE UNIT PAVING ABBOTSFORD CONCRETE STANDARD SERIES. HALF STANDARD SIZE (115 X 112.5 X 60MM). RUNNING BOND. SHADOW COLOUR. |
| | 4. PUBLIC ART PLAZA PAVING - CONCRETE UNIT PAVING |
| | 5. CAST IN PLACE CONCRETE REFER TO CIVIL DRAWINGS FOR SIDEWALK AND TRUCK ACCESS PAVING DETAILS |
| | 6. MAINTENANCE EDGE |
| | 7. RAINGARDEN RAIN GARDEN GROWING MEDIUM. DEPTH VARIES. REFER TO LANDSCAPE SPECIFICATIONS. |
| | 8. TREE AND SHRUB PLANTING 450 MM DEPTH ON GRADE SHRUB/TREE GROWING MEDIUM. REFER TO LANDSCAPE SPECIFICATIONS. |

| | |
|-----------------------------------|---|
| LANDSCAPE STRUCTURES/ FURNISHINGS | |
| | 9. BIKE RACK (4 BICYCLE CAPACITY) ICONIC COLLECTION. MBR 2300-00001 BIKE RACK. 2 TOTAL. Supplier: Maglin |
| | 10. STEPPING STONE FOR CHARGE STATION ACCESS 900 X 600MM HYDRAPRESSED SLAB. 2 TOTAL. |
| | 11. LIGHTING BOLLARD 6 TOTAL. Refer to Electrical drawings for details and model. |
| | 12. BENCH FORUMS - SURFACES CUADRA SEATING SYSTEM SBCJA-17.5 (432 MM X 432 MM). 13 TOTAL. |
| | 13. INLET @ CURB DROP |

| | |
|-------------------------------------|------------------|
| UTILITIES (refer to Civil drawings) | |
| EXISTING | PROPOSED |
| | Storm drain |
| | Sewer |
| | Water |
| | Electrical |
| | Gas |
| | Hydro (overhead) |

DRAWING NOTES

- DO NOT SCALE DRAWING. Verify all property lines and existing site conditions prior to commencing work.
- All plan dimensions in metres and all detail dimensions in millimetres.
- Plant quantities on Plans shall take precedence over plant list quantities.
- Contractor to confirm location and elevation of all existing services and utilities prior to start of construction.
- Provide layout of all work for approval by Landscape Architect prior to proceeding with work.
- Contractor to provide irrigation system for all planted areas. To current IALRC Standards and Contract Specifications.
- Landscape installation to carry a 2 year warranty from date of acceptance.
- Plant material, installation and maintenance to conform to the current edition of the Canadian Landscape Standard.
- General Contractor and/or sub-contractors are responsible for all costs related to production and submission to consultant of all landscape as-built information including irrigation.
- Tree protection fencing, for existing trees, to be installed prior to commencement of all site work.



ALL DRAWINGS TO BE READ IN ASSOCIATION WITH LANDSCAPE SPECIFICATIONS DOCUMENT.

Jan. 23, 2020

LANDSCAPE PLAN
Nanaimo Fire Station #1 Replacement
 666 FITZWILLIAM STREET, NANAIMO, BRITISH COLUMBIA
 City of Nanaimo



NOT FOR CONSTRUCTION
 This drawing represents previous issues. Do not scale from drawings.
 Verify all dimensions, elevations and details, and report any discrepancies to the Architect prior to construction. Dimensions are shown to face of member, unless otherwise noted. All dimensions are in millimetres unless otherwise specified. All dimensions are in millimetres unless otherwise specified. All dimensions are in millimetres unless otherwise specified. All dimensions are in millimetres unless otherwise specified.

| | |
|--------------------|----------|
| DEVELOPMENT PERMIT | 18-018 |
| REVISION 1 - DAP | 18-018 |
| REVISION 2 - DAP | 18-018 |
| SCALE | AS NOTED |
| DATE | |
| DRAWN BY | GJ.M.L. |
| CHECKED BY | POOJ. |
| DRAWING NO. | |



ATTACHMENT F LANDSCAPE PLAN

| SYM | QTY | BOTANICAL NAME | COMMON NAME | SCHD. SIZE / PLANT SPACING |
|---------------|-----|---|--------------------------|----------------------------|
| TREES | | | | |
| AC | 4 | Acer x freemanii 'Celebration' | Celebration Maple | 6.0m cal. S&B |
| AC | 1 | Aesculus x carnea | Red Horsechestnut | 6.0m cal. S&B |
| PL | 1 | Pseudotsuga menziesii | Douglas Fir | 2.0m H. S&B |
| Zs | 3 | Zelkova serrata | Japanese Zelkova | 6.0m cal. S&B |
| SHRUBS | | | | |
| Brs | 11 | Brachyglottis 'sunshine' | Brachyglottis 'sunshine' | #1 pot |
| BMG | 35 | Buxus 'Green Beauty' | Green Beauty Boxwood | #1 pot |
| CVF | 169 | Calluna vulgaris 'Fragly' | Fragly Scotch Heather | #1 pot |
| Cal | 520 | Calluna vulgaris 'Prairie Fire' | Prairie Fire Sedge | Sp3 |
| CVR | 99 | Carex verticillata 'Red Butter' | Thread-Leaf Carex | #1 pot |
| Cam | 66 | Campanula sangeriana 'Mablette Fir' | Mablette Fir Campanula | #1 pot |
| End | 106 | Euclidia 'James Cammer's Gray' | Neepaw Doon Euclidia | #1 pot |
| Jag | 316 | Juniperus 'Cammer's Gray' | Ball Common Juniper | Sp3 |
| LSB | 63 | Leucostemum x spectabile 'Beauty' | Beauty Daisy | #1 pot |
| LJ | 25 | Ligularia japonicum 'Tessalon' | Waxleaf Plant | #3 pot |
| Mar | 62 | Malva rosea | Purple-flowered Mallow | #1 pot |
| Mm | 67 | Molisia caerulea ssp. caerulea 'Moorlander' | Molisia Moor Grass | #1 pot |
| Pm | 57 | Polystichum multum | Wood Fern | #1 pot |
| Pla | 15 | Prinos laevis | Cherry Laurel | #5 pot |
| Rf | 11 | Rutbeckia filida | Black-Eyed Susan | #1 pot |
| Sis | 79 | Silene acaulis 'Oregon Sunset' | Oregon Flag | #1 pot |
| Vo | 17 | Vaccinium corymbosum 'Thunderbolt' | Evergreen Huckleberry | #3 pot |

GENERAL PLANTING NOTE
1. Plant quantities and species may change between issuance of dxgs and construction due to plant availability.

DRAWING NOTES

- DO NOT SCALE DRAWING. Verify all property lines and existing structural/vegetation to remain prior to commencing work.
- All plan dimensions in metres and all detail dimensions in millimetres.
- Plant quantities on Plans shall take precedence over plant list quantities.
- Contractor to confirm location and elevation of all existing services and utilities prior to start of construction.
- Provide layout of all work for approval by Landscape Architect prior to proceeding with work.
- Contractor to provide irrigation system for all planted areas to current IABC Standards and Contract Specifications.
- Landscape Irrigation to carry a 2 year warranty from date of acceptance.
- Plant materials installation and maintenance to conform to the current edition of the Canadian Landscape Standard.
- General Contractor and/or sub-contractors are responsible for all costs related to production and submission to consultant of all landscape as-built information including irrigation.
- Tree protection fencing, for existing trees, to be installed prior to commencement of all site work.



ALL DRAWINGS TO BE READ IN ASSOCIATION WITH LANDSCAPE SPECIFICATIONS DOCUMENT.

Jan. 23, 2020
PLANTING PLAN
Nanaimo Fire Station #1 Replacement
666 FITZWILLIAM STREET, NANAIMO, BRITISH COLUMBIA
City of Nanaimo



NOT FOR CONSTRUCTION
This drawing represents previous issues. Do not scale from drawings.
Verify all dimensions, elevations and details and report any discrepancies to the Architect prior to construction. Dimensions are taken to face of existing structures, lines of excavation, lines of existing utilities, lines of proposed structures, unless noted otherwise on the drawing.
All drawings remain the property of the Architect. These drawings are Copyright © 2019 S2 Architecture. These drawings may not be reproduced without the permission of the Architect.

| REVISIONS | DATE |
|--------------------|----------|
| DEVELOPMENT PERMIT | 16.04.19 |
| REVISION 1 - DAP | 16.03.19 |
| REVISION 2 - DAP | 17.01.20 |
| REVISION 3 - DAP | 20.01.20 |

SCALE: AS NOTED
DATE: _____
DRAWN BY: CLM
CHECKED BY: PDD

DRAWING NO. **L3.01**