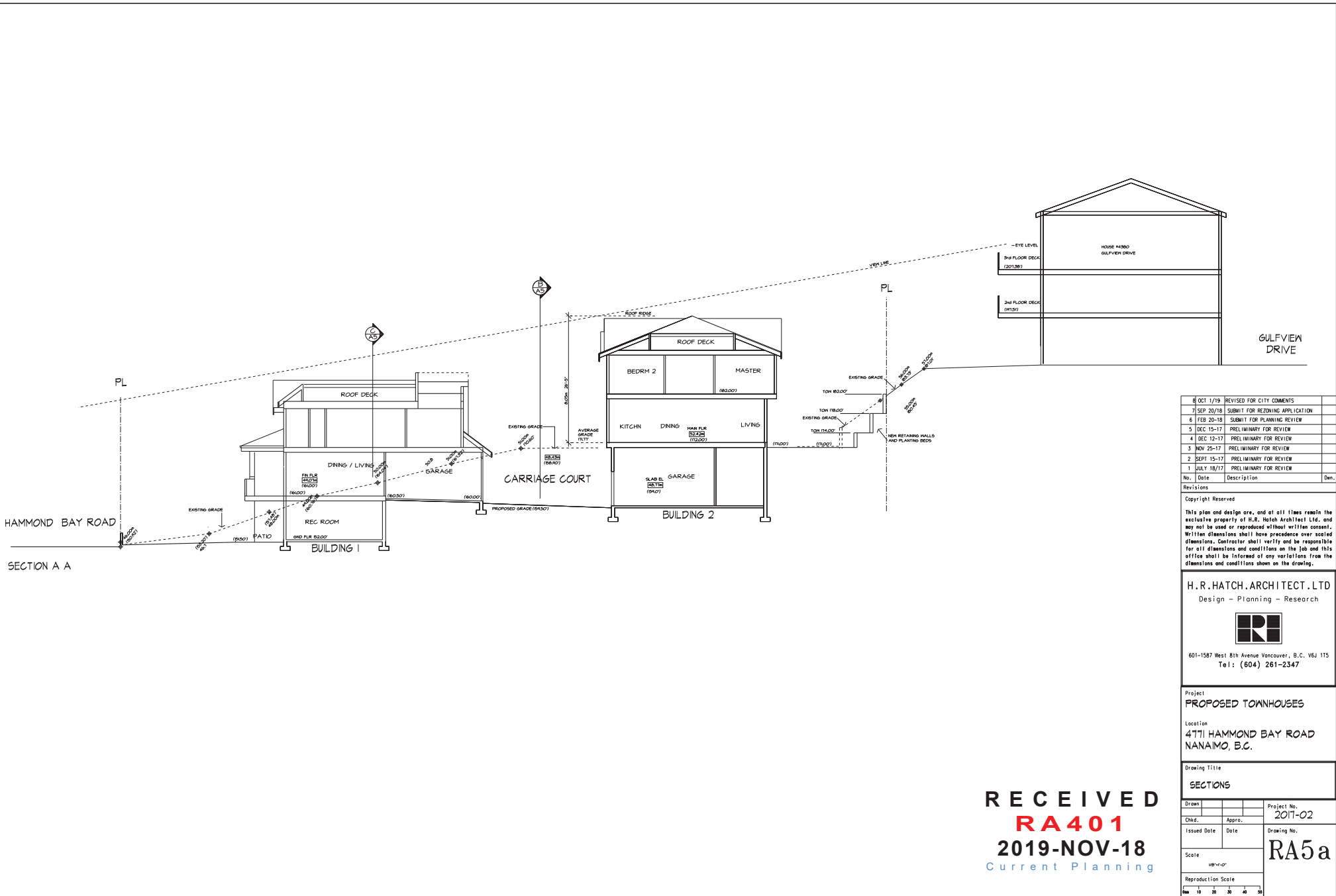


ATTACHMENT E CONCEPTUAL SECTIONS PLAN



8 OCT 1/19	REVISED FOR CITY COMMENTS	
7 SEP 20/18	SUBMIT FOR REZONING APPLICATION	
6 FEB 20-18	SUBMIT FOR PLANNING REVIEW	
5 DEC 15-17	PRELIMINARY FOR REVIEW	
4 DEC 12-17	PRELIMINARY FOR REVIEW	
3 NOV 25-17	PRELIMINARY FOR REVIEW	
2 SEPT 15-17	PRELIMINARY FOR REVIEW	
1 JULY 18/17	PRELIMINARY FOR REVIEW	
No.	Date	Description

Copyright Reserved
 This plan and design are, and all files remain the exclusive property of H.R. Hatch Architect Ltd. and may not be used or reproduced without written consent. Written dimensions shall have precedence over scaled dimensions. Contractor shall verify and be responsible for all dimensions and conditions on the job and this office shall be informed of any variations from the dimensions and conditions shown on the drawing.

H. R. HATCH ARCHITECT LTD
 Design - Planning - Research



601-1587 West 8th Avenue Vancouver, B.C. V6J 1T5
 Tel: (604) 261-2347

Project
PROPOSED TOWNHOUSES

Location
 4771 HAMMOND BAY ROAD
 NANAIMO, B.C.

Drawing Title
SECTIONS

Drawn		Project No.	2017-02
Chkd.		Issued Date	
Appr.		Date	
Scale	1/8" = 1'-0"	Reproduction Scale	
Scale	1/8" = 1'-0"	Reproduction Scale	

RECEIVED
RA 401
2019-NOV-18
 Current Planning

RA5a