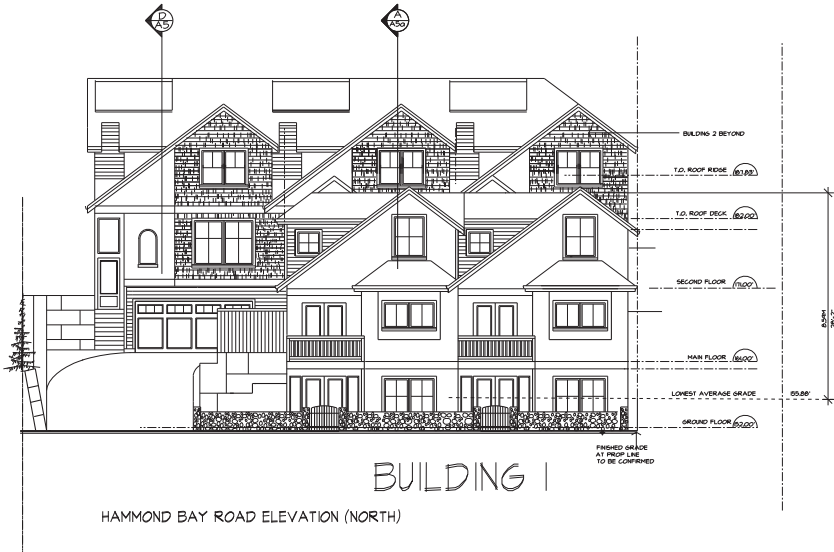
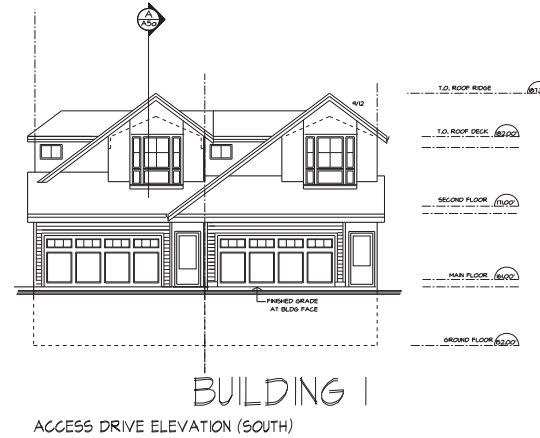


ATTACHMENT D CONCEPTUAL ELEVATIONS



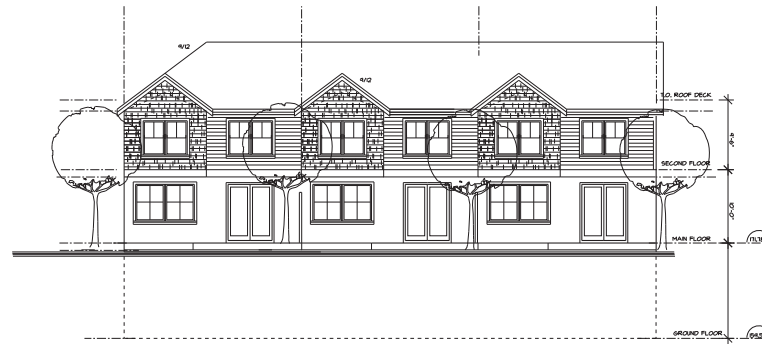
BUILDING 1
HAMMOND BAY ROAD ELEVATION (NORTH)



BUILDING 1
ACCESS DRIVE ELEVATION (SOUTH)



SECTION B B
ACCESS DRIVE ELEVATION (NORTH) BUILDING 2



SOUTH ELEVATION BUILDING 2

RECEIVED
RA401
2019-NOV-18
Current Planning

11	OCT 9/19	REV FOR COMMENTS	
10	OCT 1/19	REV FOR PLANNING COMMENTS	
9	SEP 21/19	REV FOR PLANNING COMMENTS	
8	SEP 20/18	SUBMIT FOR REZONING APPLICATION	
7	SEP 2/18	SUBMIT FOR PLANNING REVIEW	
6	FEB 20-18	SUBMIT FOR PLANNING REVIEW	
5	DEC 15-17	PRELIMINARY FOR REVIEW	
4	DEC 12-17	PRELIMINARY FOR REVIEW	
3	NOV 25-17	PRELIMINARY FOR REVIEW	
2	SEPT 15-17	PRELIMINARY FOR REVIEW	
1	JULY 18/17	PRELIMINARY FOR REVIEW	

No.	Date	Description	Dev.
Revisions			

Copyright Reserved
This plan and design are, and all files remain the exclusive property of H.R. Hatch Architect Ltd. and may not be used or reproduced without written consent. Written dimensions shall have precedence over scaled dimensions. Contractor shall verify and be responsible for all dimensions and conditions on the job and this office shall be informed of any variations from the dimensions and conditions shown on the drawing.

H. R. HATCH ARCHITECT. LTD
Design - Planning - Research

601-1587 West 8th Avenue Vancouver, B.C. V6J 1T5
Tel: (604) 261-2347

Consultant

Seal
Seal

Project
PROPOSED TOWNHOUSES
Location
4771 HAMMOND BAY ROAD
NANAIMO, B.C.

Drawing Title
ELEVATIONS

Drawn		Project No.	2017-02
Chd.		Issued Date	
Appr.		Date	
Scale	1/8"=1'-0"	Drawing No.	RA4
Reproduction Scale			