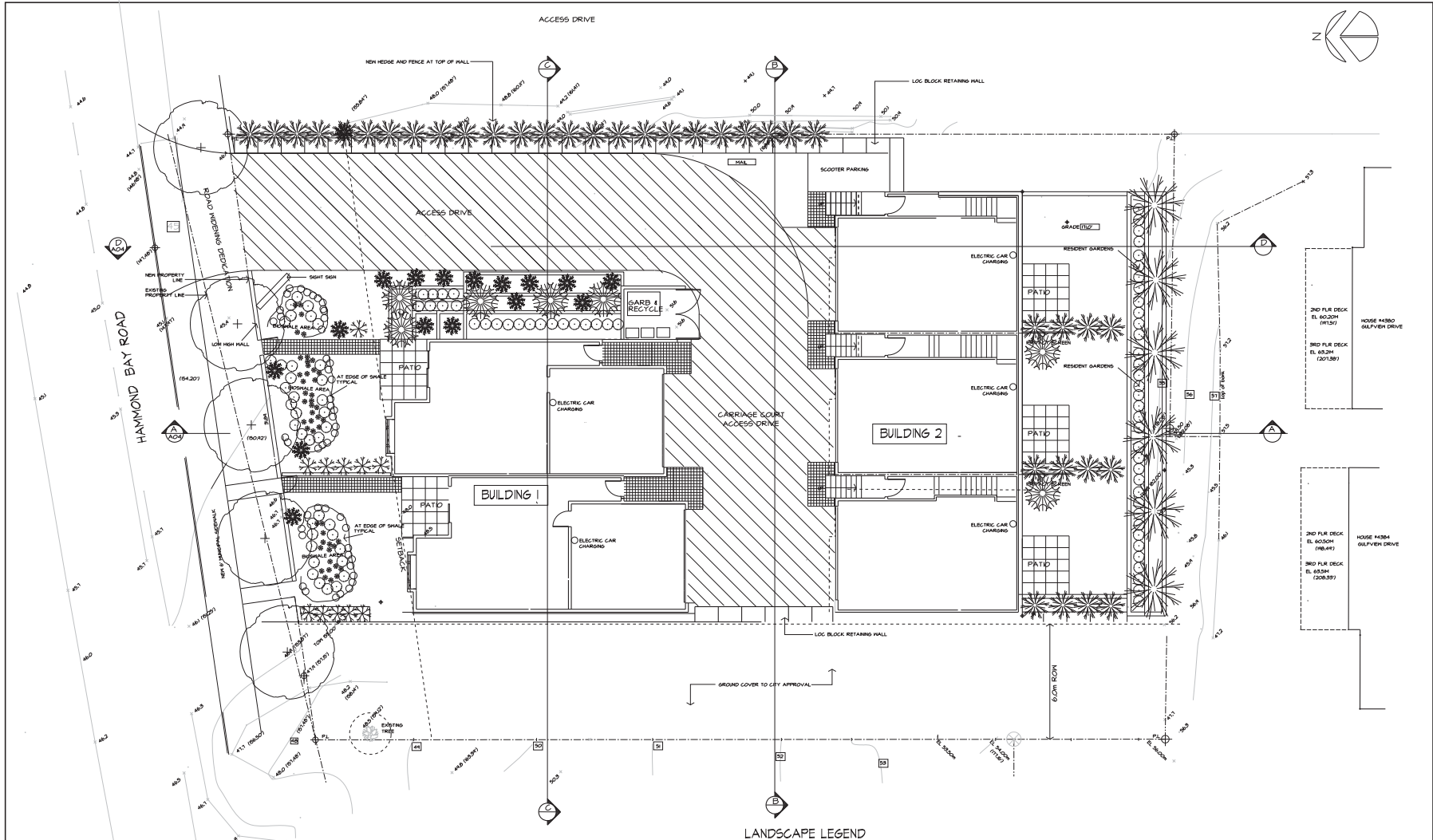
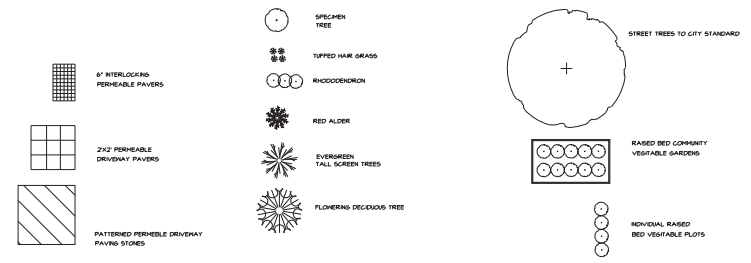


ATTACHMENT C CONCEPTUAL SITE PLAN



LANDSCAPE LEGEND



No.	Date	Description	Drawn
1	JULY 18/17	PRELIMINARY FOR REVIEW	
2	SEPT 15-17	PRELIMINARY FOR REVIEW	
3	NOV 25-17	PRELIMINARY FOR REVIEW	
4	DEC 12-17	PRELIMINARY FOR REVIEW	
5	DEC 15-17	PRELIMINARY FOR REVIEW	
6	FEB 20-18	SUBMIT FOR PLANNING REVIEW	
7	AUG 30-18	SUBMIT FOR PLANNING REVIEW	
8	SEP 3-18	SUBMIT FOR REZONING APPLICATION	
9	SEP 15-18	SUBMIT FOR PLANNING COMMENTS	
10	SEP 23-18	REV FOR PLANNING COMMENTS	
11	OCT 1-18	REV FOR PLANNING COMMENTS	

Copyright Reserved
This plan and design are, and all files remain the exclusive property of H.R. Hatch Architect Ltd. and may not be used or reproduced without written consent. Written dimensions shall have precedence over scaled dimensions. Contractor shall verify and be responsible for all dimensions and conditions on the job and this office shall be informed of any variations from the dimensions and conditions shown on the drawing.

H. R. HATCH. ARCHITECT. LTD
Design - Planning - Research



601-1587 West 8th Avenue Vancouver, B.C. V6J 1T5
Tel: (604) 261-2347

Consultant	
Seal	Seal
Project PROPOSED TOWNHOUSES	
Location 4771 HAMMOND BAY ROAD NANAIMO, B.C.	
Drawing Title SITE PLAN / LANDSCAPE PLAN	

Drawn	Appr.	Project No.
Chd.	Date	2017-02
Issued Date	Date	Drawing No.
Scale	1/8"=1'-0"	RA3
Reproduction Scale	1/8"=1'-0"	

RECEIVED
RA 401
2019-NOV-18
Current Planning