



| | |
|--|--|
| To Amir Freund, Project Manager | From Bernard Abelson, Project Manager Mat MacDonald, Project Engineer |
| Company The City of Nanaimo | Branch 2121 - Vancouver |
| Re Downtown Nanaimo Mobility Hub: Parking Survey DRAFT | Date July 11, 2019 File Number 2121-00433-00 |

This memorandum outlines the work done to date by McElhanney on the downtown parking inventory and occupancy survey.

1. SCOPE

The downtown parking study survey area was bounded by Milton Street, Comox Road, Esplanade and Front Street, and included counts on the streets within that boundary. Eight off-street parking lots or parkades in the study area were included in the survey. The off-street locations surveyed were:

1. Wallace Wentworth Parking Lot
2. Bastion Street Parkade
3. Selby Street Parking Lot
4. Prideaux/Franklin Parking Lot
5. Cavan/Hecate Parking lot
6. Cavan/Victoria Road Parking Lot
7. Harbour Front Parkade
8. Port of Nanaimo Centre Parkade

On-street parking demand was surveyed during four time periods:

- Weekday, 8:00am to 10:00am
- Weekday, 11:00am to 1:00pm
- Weekday, 3:00pm to 5:00pm
- Weekend, 11:00am to 1:00pm

Off-street parking demand was surveyed during two time periods:

- Weekday, 9:00am to 11:00am
- Weekday, 2:00pm to 4:00pm

2. METHODOLOGY

Desktop Inventory

An inventory of existing parking locations and restrictions was collected by reviewing orthophotos, Google Maps, Google Streetview and City of Nanaimo Parking Maps. Parking stalls were counted by measuring the available curb space and dividing by the typical length of a parking stall, 7.0m, and rounding down to the nearest whole number.

Following the desktop work, field verification was then used to complete the data set where information was missing, confirm locations and restrictions from sources, and to update where recent changes to parking had occurred.

Field Work

Parking occupancy was recorded in the field by driving every street, parking lot, or parkade for every time period and counting the number of vehicles occupying a parking stall.

3. RESULTS

The results of the on-street and off-street parking survey are shown in Figures 1 to 4.

The total on-street parking supply in downtown Nanaimo is 1,882 stalls.

Occupancy ranged from 41% during the weekend and was up to 62% during the 11:00am to 1:00pm count.

In general, the overall parking supply exceeds the demand. There are localized areas of higher demand or lower supply, particularly around higher intensity commercial or residential land uses.

Attachments:

- Figures 1 to 4

Downtown Mobility Hub Project
On-street and Off-street
Occupancy - Morning

- Legend
- Occupancy
- 0% - 50%
 - 51% - 70%
 - 71% - 85%
 - 86% - 100%

Number of vehicles
parked at time
of count

5
12

Number of parking
stalls on the block
face

Project Number: 2121-00433-00
Data Collected: April/May 2019
Date: July 11, 2019

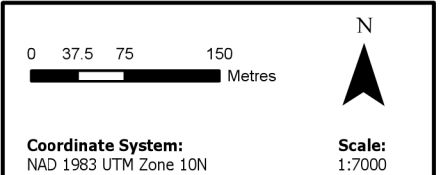
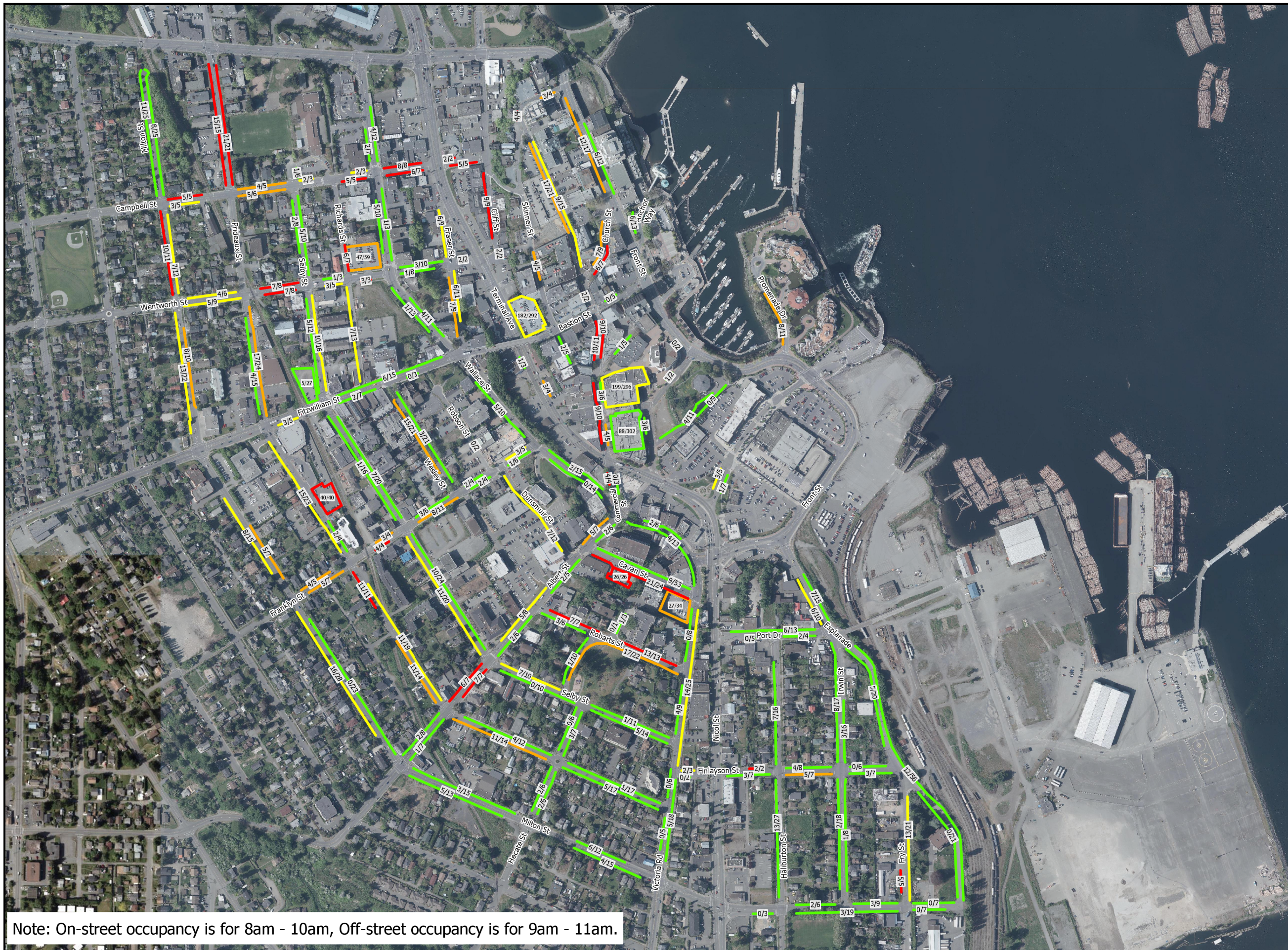


Figure 1



Note: On-street occupancy is for 8am - 10am, Off-street occupancy is for 9am - 11am.

Downtown Mobility Hub Project
On-street and Off-street
Occupancy - Midday

- Legend
- Occupancy
- 0% - 50%
 - 51% - 70%
 - 71% - 85%
 - 86% - 100%

Number of vehicles
parked at time
of count

$\frac{5}{12}$

Number of parking
stalls on the block
face

Project Number: 2121-00433-00
Data Collected: April/May 2019
Date: July 11, 2019

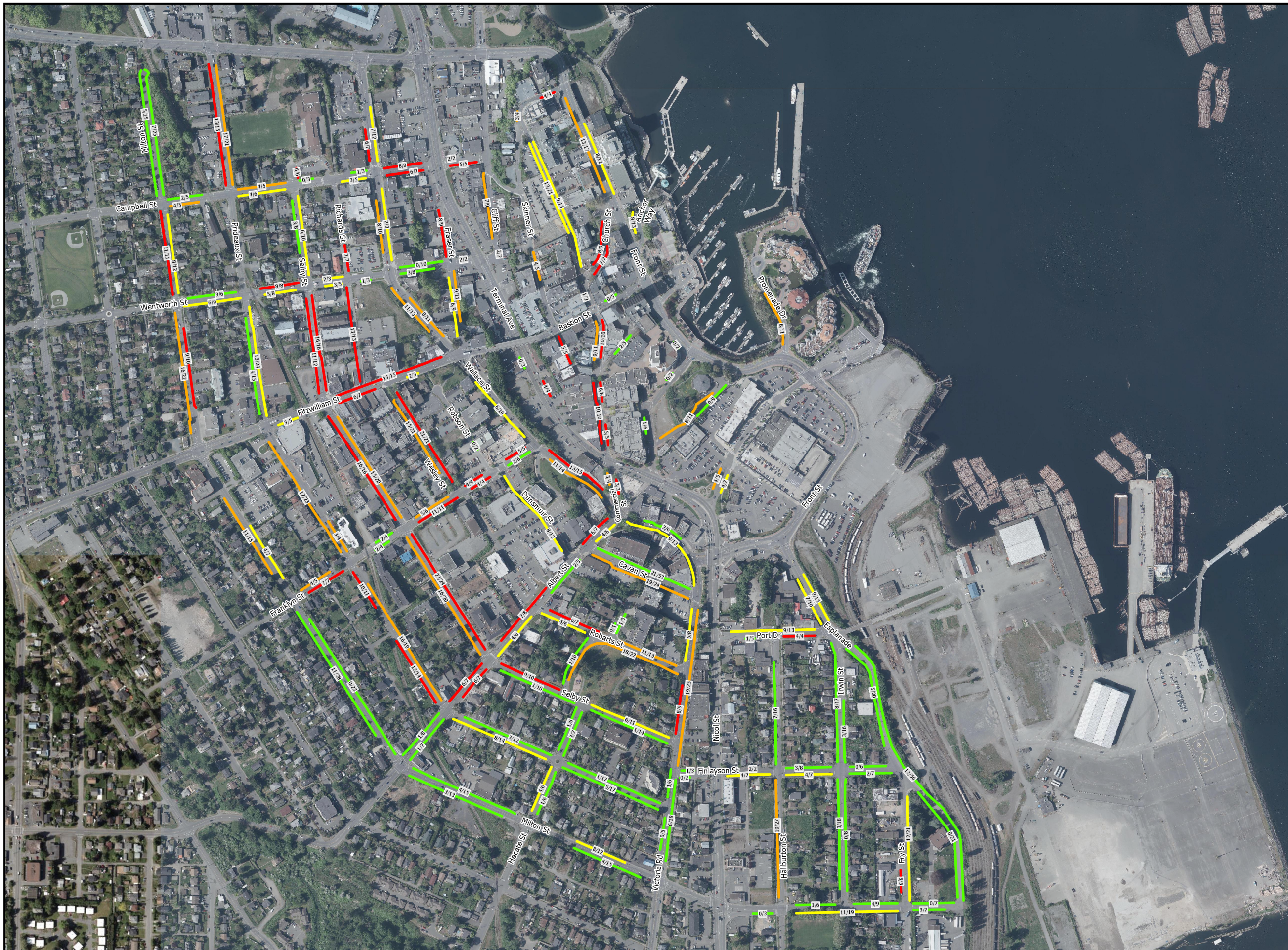
0 37.5 75 150 Metres

Coordinate System:
NAD 1983 UTM Zone 10N

N

Scale:
1:7000

Figure 2



Downtown Mobility Hub Project
On-street and Off-street
Occupancy - Afternoon

- Legend
- Occupancy
- 0% - 50%
 - 51% - 70%
 - 71% - 85%
 - 86% - 100%

Number of vehicles
parked at time
of count

$\frac{5}{12}$

Number of parking
stalls on the block
face

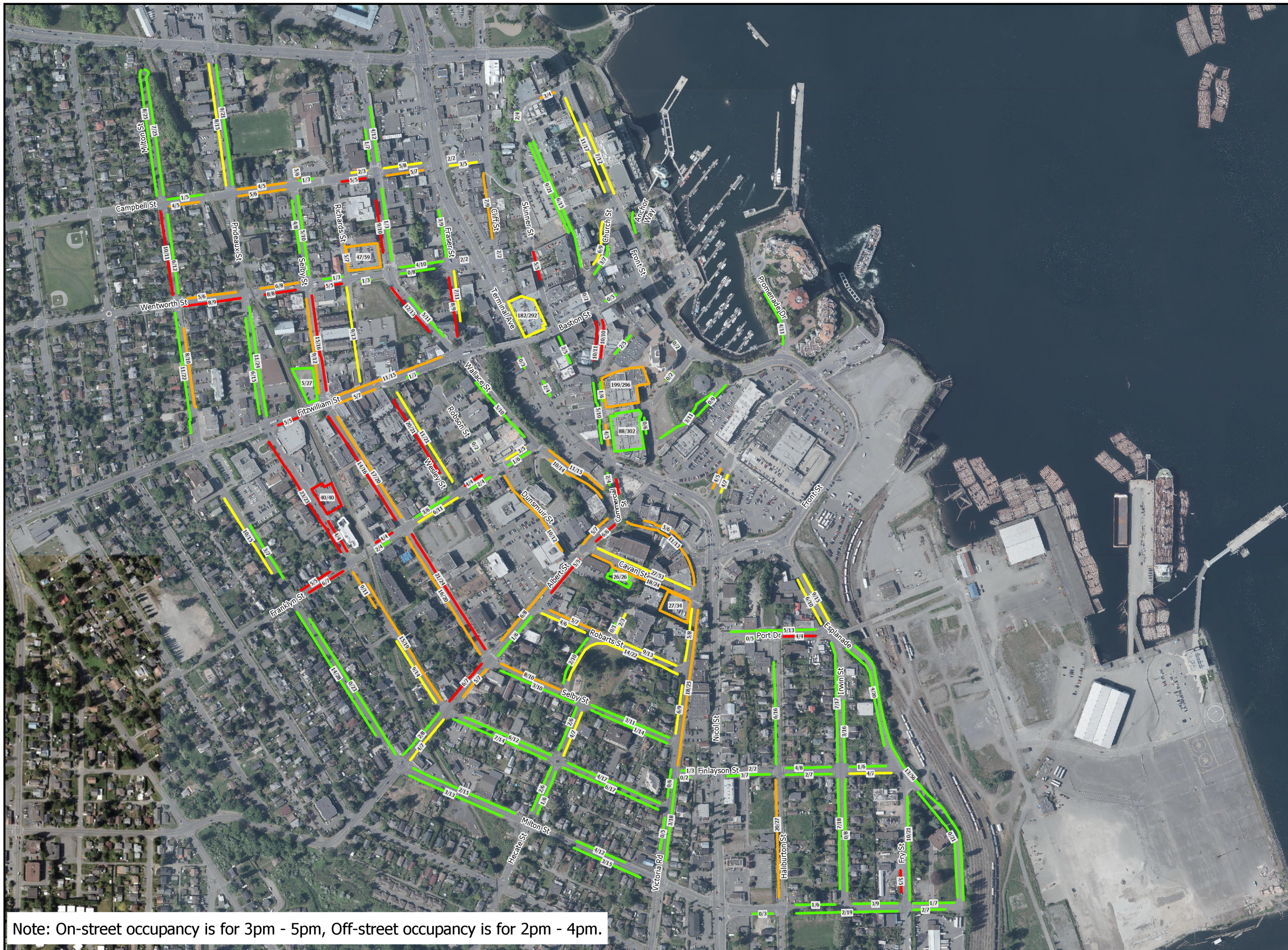
Project Number: 2121-00433-00
Data Collected: April/May 2019
Date: July 11, 2019

0 37.5 75 150 Metres

Coordinate System:
NAD 1983 UTM Zone 10N

Scale:
1:7000

Figure 3



Note: On-street occupancy is for 3pm - 5pm, Off-street occupancy is for 2pm - 4pm.

Downtown Mobility Hub Project
On-street and Off-street
Occupancy - Weekend

- Legend
- Occupancy
- 0% - 50%
 - 51% - 70%
 - 71% - 85%
 - 86% - 100%

Number of vehicles
parked at time
of count

$\frac{5}{12}$

Number of parking
stalls on the block
face

Project Number: 2121-00433-00
Data Collected: April/May 2019
Date: July 11, 2019

0 37.5 75 150 Metres

Coordinate System:
NAD 1983 UTM Zone 10N

N

Scale:
1:7000

Figure 4

