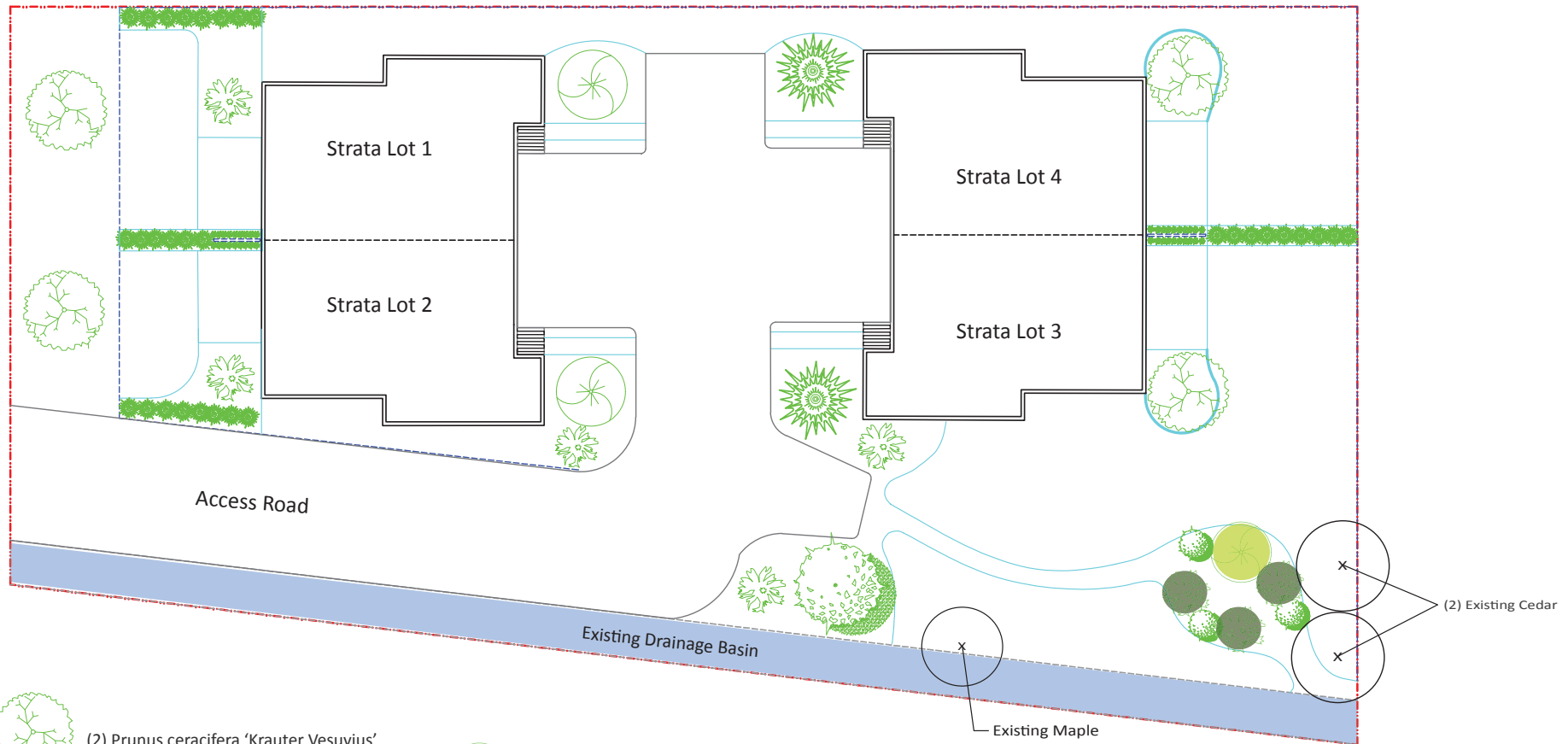


Mexicana Road



- (2) Prunus ceracifera 'Krauter Vesuvius'
- (1) Vitex agnus-castus 'Abeville Blue'
- (2) Acer platinoides 'Columnare'

- (1) Salix purpurea
- (2) Acer palmatum
- (5) Syringa vulgaris 'Lavender Lady'

- (3) Spirea vanhouttei
- (3) Rosa 'Morden Blush'
- (31) Thuja occidentalis 'Skybound'
- Clematis vines supported by lattice fence

Site Development Details

Lot Area = 18, 191 sq. ft.
 Unit Area: main floor = 700 sq. ft.
 second floor = 877 sq. ft.
 total Area per unit = 1577 sq. ft.
 4 units GFA = 6308 sq. ft. Lot coverage = 34%
 Parking area: 1 garage per unit = 246 sq. ft.
 1 Driveway per building = 400 sq. ft.
 Parking spots: 2 per unit, 2 visitor = 10 total
 Elevation Height: 25 ft.

Materials

NOTE: All planting beds are to be lined with commercial grade landscape edging, and covered in fabric and bark mulch. However, the dry riverbed area in the southeast corner of the property will be covered in river rock and small boulders. It will collect runoff from the paved areas and carry it into the existing drainage ditch running along the south property line. The patios are to be stamped concrete. All other softscape areas are to be sodded lawn.

Vegetation Management

NOTE: Existing Maple and Cedar trees are to be surrounded by protection barriers the appropriate distance away from each one according to their trunk diameters. (See the tree management and protection bylaw on the city website).

RECEIVED
 DP1144
 2019-SEP-30
 Current Planning

PROJECT: 3150 Mexicana Road, Nanaimo, BC
 DRAWING: Landscape and Vegetation Management Plan
 CLIENTS: Robyn and Karen White
 LANDSCAPE DESIGNER: Emily Fergusson (M-LARC)

