

Photo 1 – Looking southeast

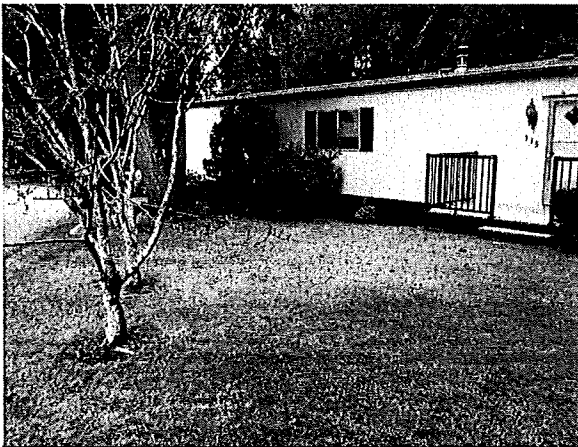


Photo 2 – Looking northwards along Cedar Cresc.



Photo 3 – Ground settlement at southeastern corner of #115



Photo 4 – Looking northwards along bank of Beck Creek adjacent to #115 showing frequent curved and leaning tree trunks indicative of slope movement

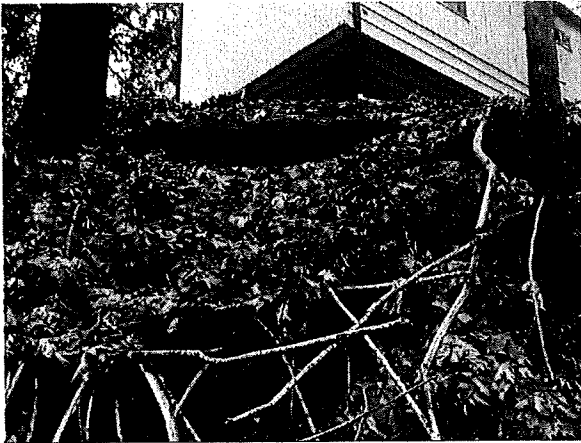


Photo 5 – Decayed log retaining structure



Photo 6 – silty sand and gravel soil exposed on slope



Photo 7 – gentler slope towards northern end of #115