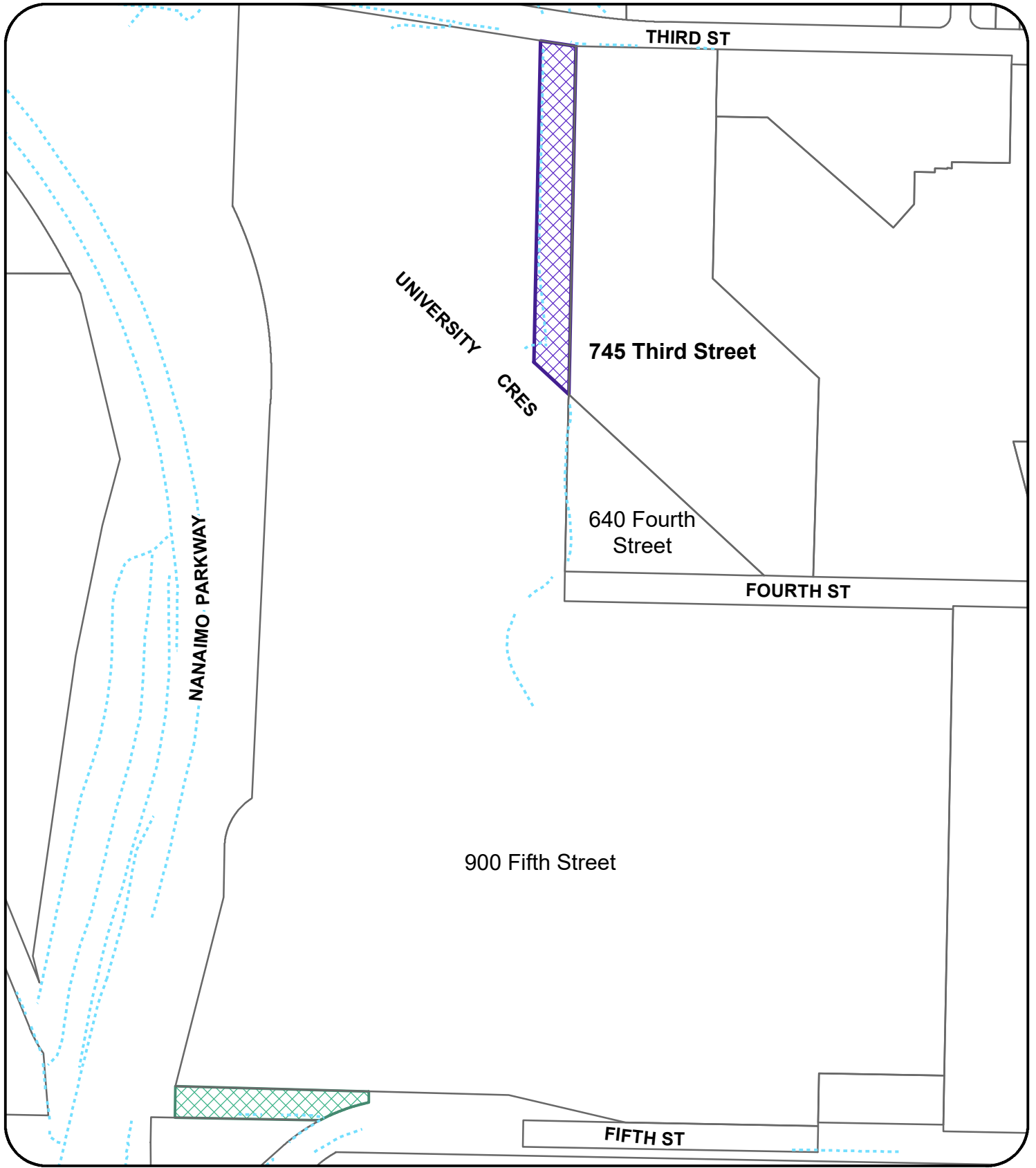


ATTACHMENT A



Legend

- Water courses
- City Road Closure Area, 3,160 m²
- VIU Land Exchange area, 6,918 m²

LAND EXCHANGE NO. LD003675

Civic: 900 Fifth Street
Legal: LOT 1, SECTION 1, NANAIMO DISTRICT,
PLAN 35726 EXCEPT PART IN PLAN VIP66138
AND PLAN VIP66141

N

