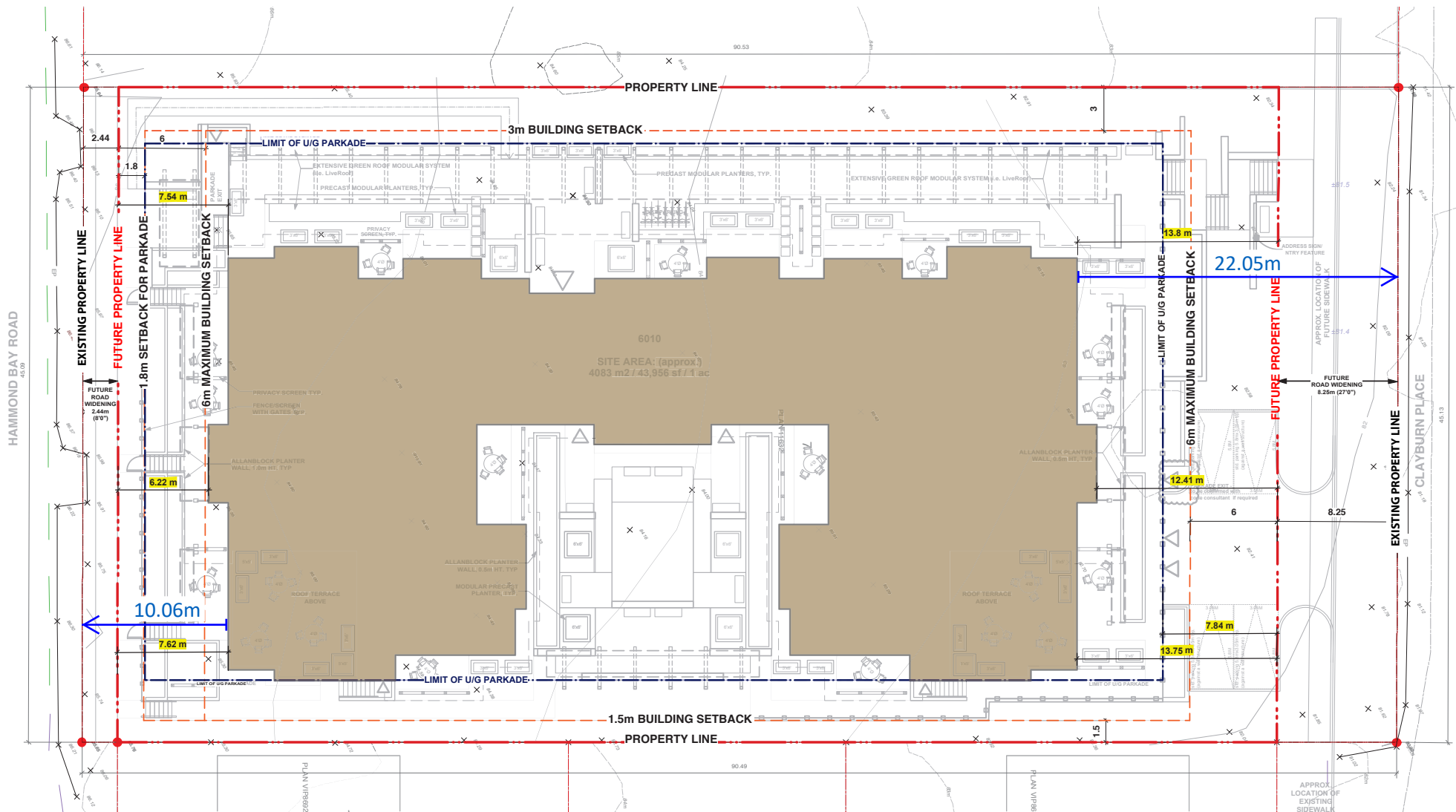


ATTACHMENT C SITE PLAN



NOTE: ELEVATIONS ARE IN METRES

SK- 1B: SETBACKS

DP Application No. DP001118
MAY 28, 2019 - REVISED

Hammond Bay Residences
6010 Hammond Bay Road, Nanaimo, BC



MURDOCH COMPANY
ARCHITECTURE + PLANNING LTD.
#106 - 4319 Main St.
P.O. Box 1394
Whistler, B.C. V0N 1B0
Ph. 905-6992 Fax 905-6993
e-mail murdoch@slus.net