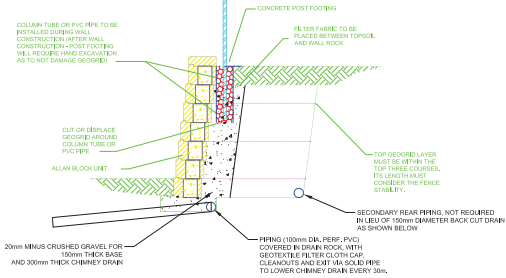


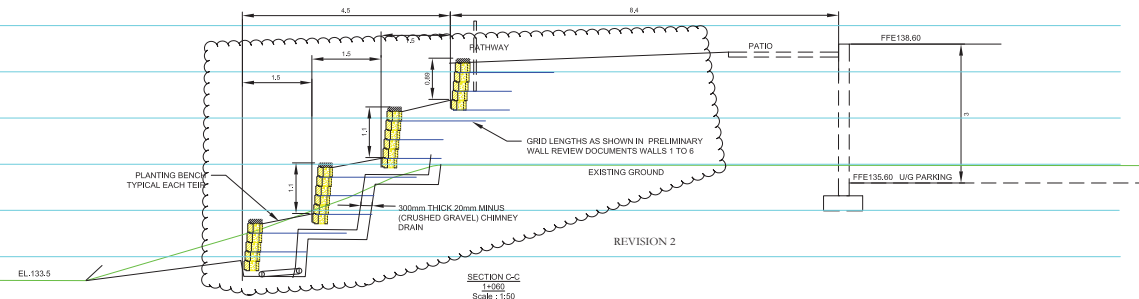
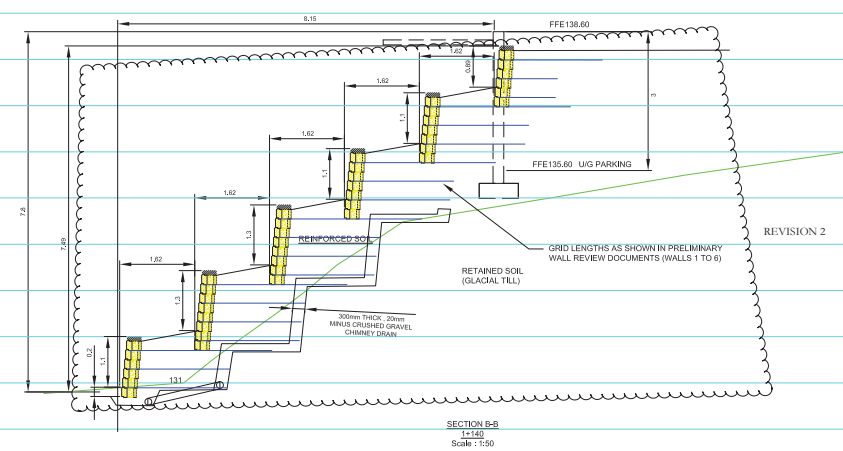
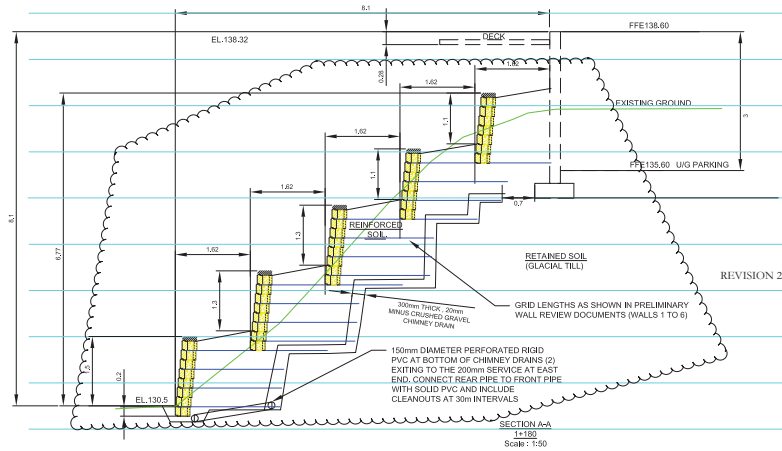
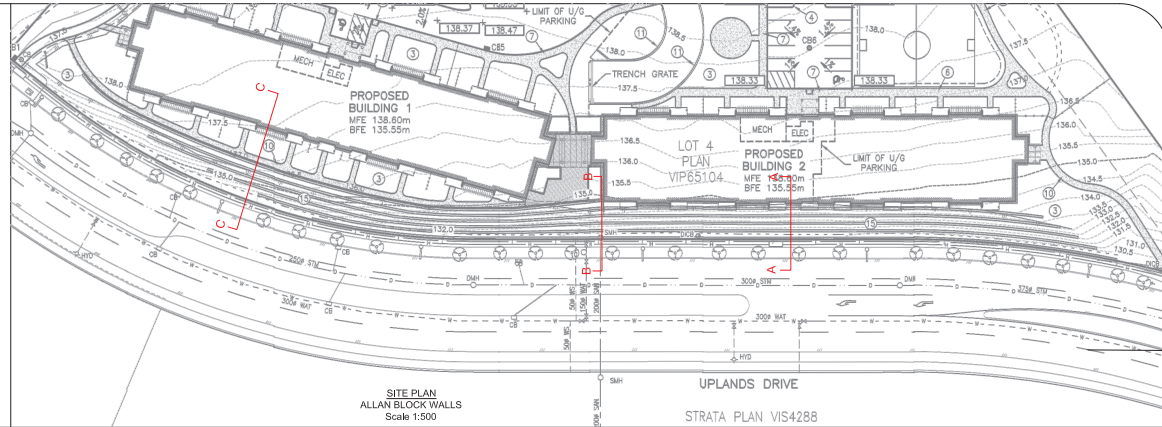
# ATTACHMENT H

## RETAINING WALL/ALLAN BLOCK DETAIL

REFER TO DESIGN DETAILS ALLAN BLOCK TIER 1 FOR REINFORCED WALL WITH LATION FOR ALL OTHER NOTED DETAILS AND SPECIFICATIONS.



TYPICAL SECTION ALLAN BLOCK WALL  
Scale 1:25



### NOTES

SEE PRELIMINARY DESIGN DOCUMENTS FOR QUANTITY TAKE-OFF FOR WALLS 1 TO 6. THEY DO NOT INCLUDE THE BOTTOM TWO 150mm DIAMETER PIPE RUNS (420m).

**REINFORCED SOIL:** SILTY SAND AND GRAVEL (RE-USE GLACIAL TILL COMPACTED TO A MINIMUM 95% MODIFIED STANDARD PROCTOR AT OPTIMUM MOISTURE CONTENT, UNDER MOISTURE CONTROLLED CONDITIONS ONLY, I.E. DRYER WEATHER)

**RETAINED SOIL:** VERY DENSE SILTY SAND AND GRAVEL (GLACIAL TILL) CUT SHOULD BE BENCHED AND HAVE A MINIMUM 10 DEGREE BATTER, UNDER GEOTECHNICAL SUPERVISION.

**SEGMENTAL BLOCKS:** ALLAN BLOCK, AB CLASSIC 6 DEG., 203mm X 305mm X 457mm (8" X 12" X 18"), 34KG / EA. WALL TIER SEPARATIONS ARE TO BE EQUIDISTANT, HEIGHTS VARY, SEE SECTION DETAILS.

ALL ASPECTS OF THE DESIGN AND INSTALLATION TO BE UNDER THE GEOTECHNICAL SUPERVISION. (CLIENT)

**GEOTEXTILE:** TENCATE MIRAGRID 3XT AND 5XT, UNIAXIAL GEOTEXTILE, MUST BE INSTALLED PERPENDICULAR TO WALL.

ROLL SIZES: 1.8m X 91m, 3.6m X 46m (81 KG / ROLL)

REVISION 2

REV No.	DATE	BY	P.Eng.	REVISION DESCRIPTION	LEGEND	DRAWING TITLE	ENGINEER'S SEAL	PLOT DATE	DRAWN BY	REVIEWED BY	SCALE	PROJECT No.	DRAWING No.
01	JAN. 31-19	JH	CH	UPDATED DESIGN		UPLANDS DRIVE ALLAN BLOCK WALL		JAN 25.2019	JH	CH	AS NOTED	F6302	01
02	FEB 6 - 19	JH	CH	UPDATED DESIGN TENDER ADDENDUM #2		MULTI-RESIDENTIAL APARTMENTS 4800 UPLANDS & 6035 LINLEY VALLEY DRIVE, NANAIMO, BC							
						LEGAL DESCRIPTION							

RECEIVED  
DP 1119  
2019-MAY-03  
COURTESY PHOTO

**LEA**  
Lewkowich  
Engineering  
Associates Ltd.