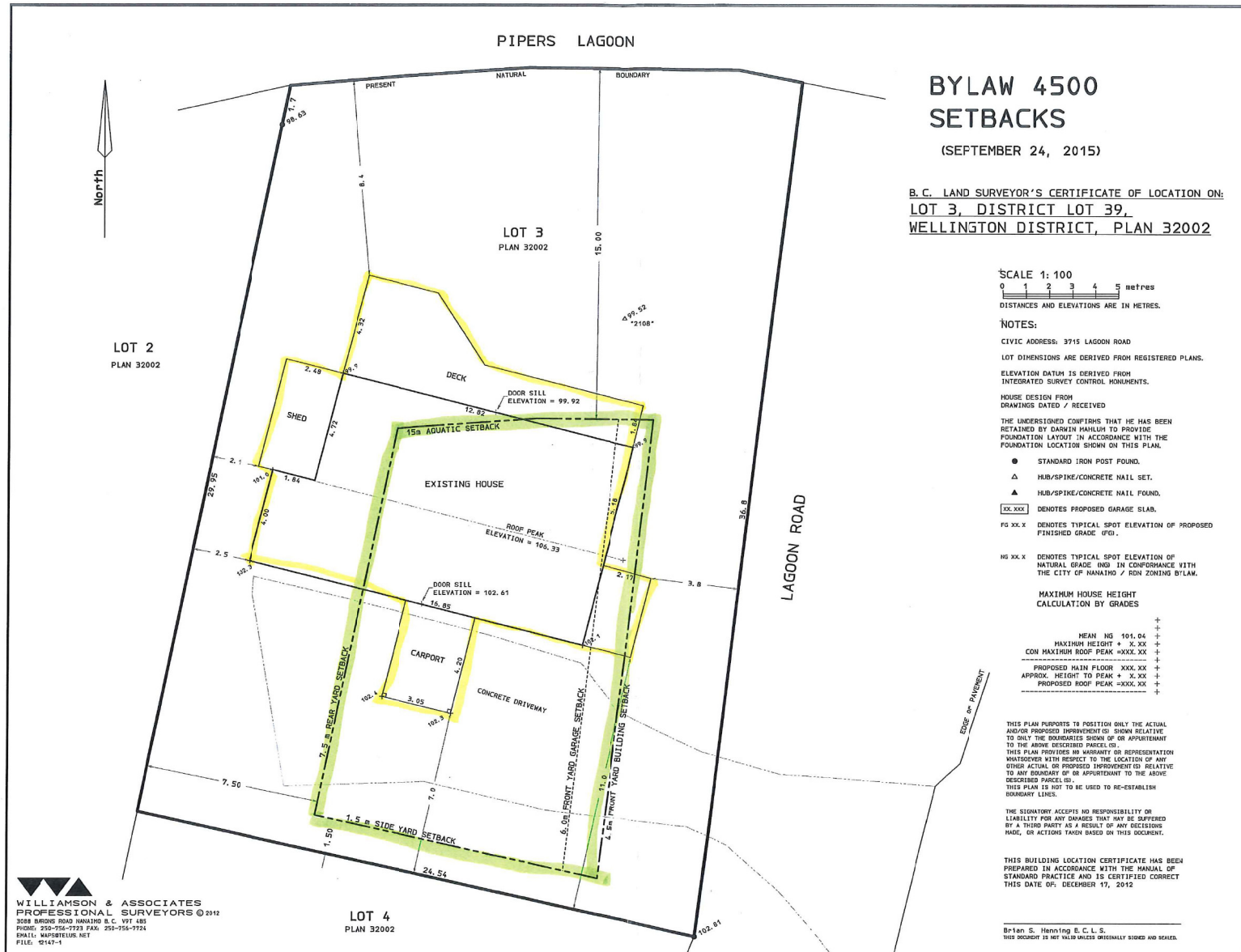
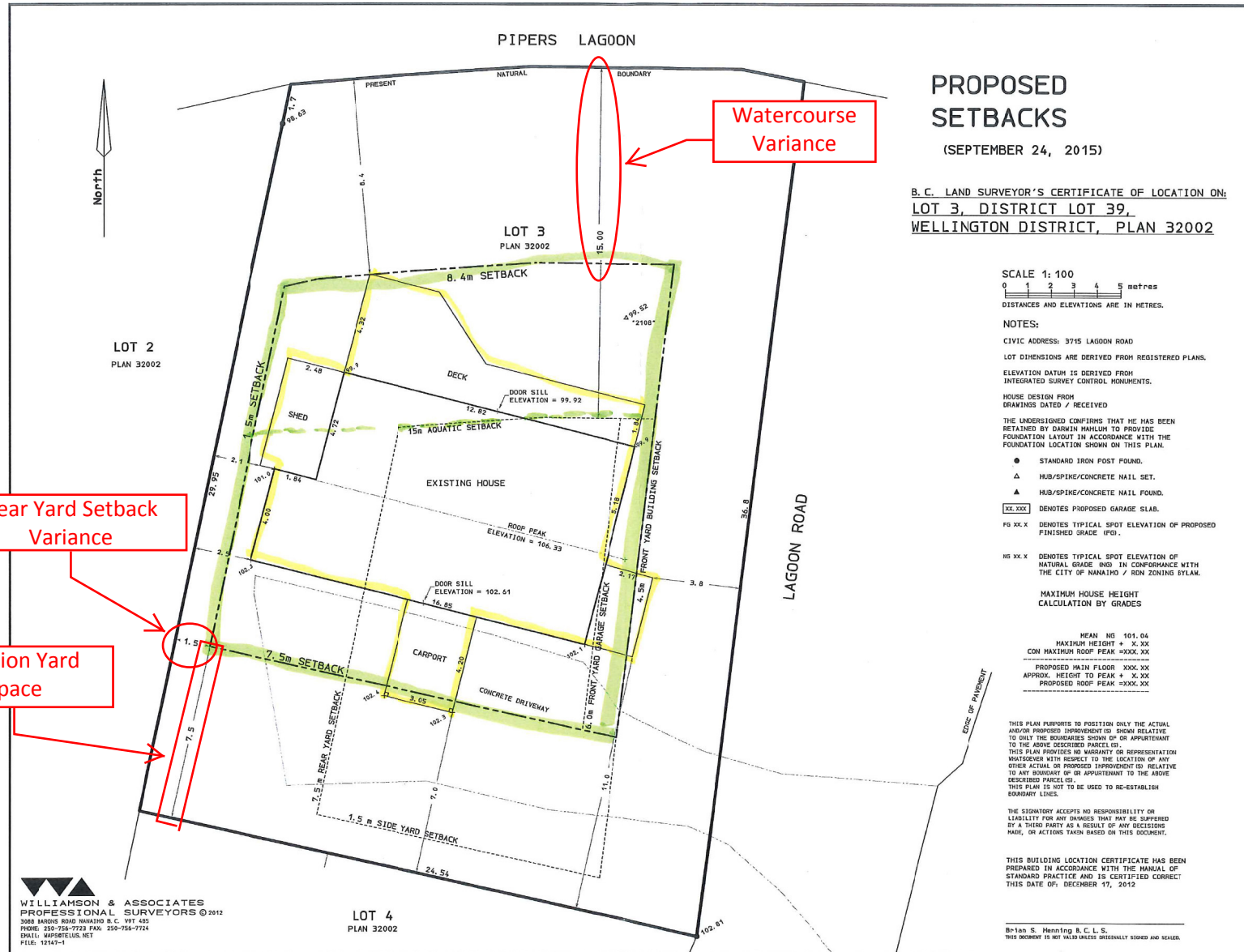


ATTACHMENT D SITE PLAN (Existing Bylaw 4500 Setbacks)



RECEIVED
JUN 02 2017
DUP 217
CITY OF NANAIMO
COMMUNITY DEVELOPMENT

ATTACHMENT E SITE PLAN (Proposed Setbacks)



ATTACHMENT F LANDSCAPE PLAN



DESIGN RATIONALE

The Mahlum Residence lies in an area that would have once been part of a Garry Oak ecosystem. This ecosystem is well represented in Pipers Lagoon Park, which lies across the lagoon to the north of the property. Several Garry Oaks still surround the property. It is the intent of the owners to return the garden as near as possible to the original diverse ecosystem that was once on this site.

PLANT LIST

Key	Qty A*	Qty B**	Botanical Name	Common Name	Pot Size / ht
PF	3	4	Emergent Trees <i>Pinus flexilis var. vanderwolf</i>	Mandelor Picea	2m
Ag	5		Deciduous Trees <i>Amelanchier grandiflora 'Autumn Brilliance'</i>	Serviceberry	#10
SI	1		<i>Styrax japonica</i>	Shoebill Tree	#16
Qs	20		Evergreen Shrubs/Groundcovers <i>Quercus chalcifolia</i>	Sisal	#1
JS	3		<i>Juniperus communis</i>	Common Juniper	#1
JS	1		<i>Juniperus scopulorum</i>	Rocky Mountain Juniper	#1
Ma	15	20	<i>Malva sylvestris</i>	Yell. Garden Mallow	#1
Mn	24		<i>Malva moschata</i>	Dull Oregon Grape	#1
VO	21	20	<i>Vaccinium ovatum</i>	Evergreen Huckleberry	#1
Aa	2		Deciduous Shrubs <i>Arctostaphylos uva-ursi</i>	Saskatoonberry	#1
CG	1		<i>Cornus douglasii var. californica</i>	Baked Hazelnut	#1
HD	3	20	<i>Hibiscus syriacus</i>	Chinese Rose	#1
Rs	10	20	<i>Ribes sanguineum</i>	Red Flowering Currant	#1
Rg	5		<i>Rosa rugosa</i>	Edible Rose	#1
Rn	11	30	<i>Rosa nutkana</i>	Nootka Rose	#1
Sc	2		<i>Sambucus racemosa</i>	Redberry	#6
Sc	2	20	<i>Symphoricarpos alba</i>	Snowberry	#1
VP	4		<i>Vaccinium parvifolium</i>	Red Huckleberry	#1
A	11		Ground Cover/Perennials <i>Adiantum sp.</i>	Venus' Hair	4 cm
Au	7		<i>Arctostaphylos uva-ursi</i>	Kinnikinnick	4 cm
D	20		<i>Dianthus barbatus</i>	Blended Heart	4 cm
H	5		<i>Hemerocallis filifolia</i>	Almond	#1
O	5		<i>Oxalis reginae</i>	Oxalis	10 cm

Da	12		Ferns <i>Asplenium adnigrum</i>	Silky Wood Fern	#1
Pg	10		<i>Polypodium glycyphylloides</i>	Rocky Mountain Fern	#1
Prun	20		<i>Prunella vulgaris</i>	Sweet Wood	#1
18			Garry Oak Meadow Plants <i>Asplenium platyneuron</i>	Yarrow	bulbs
33			<i>Allium cernuum</i>	Nodding Onion	bulbs
60			<i>Artemisia maritima</i>	Thrift	10 cm
60			<i>Camassia quamash</i>	Common Camass	bulbs
6			<i>Dodecatheon hendersonii</i>	Broad-leaved Shooting Star	#1
12			<i>Erythronium albidum</i>	White Goutweed	10 cm
60			<i>Fritillaria affinis</i>	Chokecherry Lily	bulbs
18			<i>Hemerocallis filifolia</i>	Small-flowered daylily	#1/10 cm
15			<i>Lomatium nudicaule</i>	Spring Gold	#1/10 cm
21			<i>Lomatium nudicaule</i>	Lance-leaved Stonecrop	plants
15			<i>Sedum anglicum</i>	Orange Stonecrop	plants
15			<i>Sedum spaldingii</i>	Broad-leaved Stonecrop	plants
10			<i>Polypodium glycyphylloides</i>	Limestone Fern	#1
27			Grasses in meadow — can be any of the following <i>Oenothera californica</i>	California Oenothera	plants
			<i>Festuca idahoensis ssp. roemerii</i>	Roemer's fescue	plants
			<i>Elymus glaucus</i>	Wild Rye	plants

Meadow Grass
Garry Oak Upland Mix available from Pickseed
http://pickseed.com/VCCanada/mahlum/seedlist/reclamation_info_2012.pdf

Roemer's Fescue
California Oenothera

NOTES:

- ALL PLANTS AND PLANTING TO BE TO BC SLA/BCTA LANDSCAPE STANDARDS, LATEST EDITION.
- SOIL DEPTHS TO BE 6" FOR MEADOW AREAS, 12" FOR REST OF GARDEN.
- 1 CU. YD. FOR TREES.

Quantity A: Private property: all quantities of plants to be confirmed after garden layout and rock placement is complete.
Quantity B: City property: plant quantities to be confirmed on site at time of planting.
Plant in groups of 5.

RECEIVED
JUL 02 2017
DUBIT
CITY OF NANAIMO
COMMUNITY DEVELOPMENT

DATE REV DESCRIPTION
CONSULTANT
VICTORIA DRAKEFORD
LANDSCAPE ARCHITECT
236 Pine St. Nanaimo,
B.C. V8T 2G8
250-764-4336
victoria@drakeford.net

PROJECT
MAHLUM
RESIDENCE
3715 LAKEVIEW ROAD
NANAIMO BC

SHEET TITLE
LANDSCAPE
PLAN

SCALE 1:200m DATE
DRAWN VJD CHECKED
PROJECT NUMBER Mahlum 16
DRAWING NUMBER L1/1