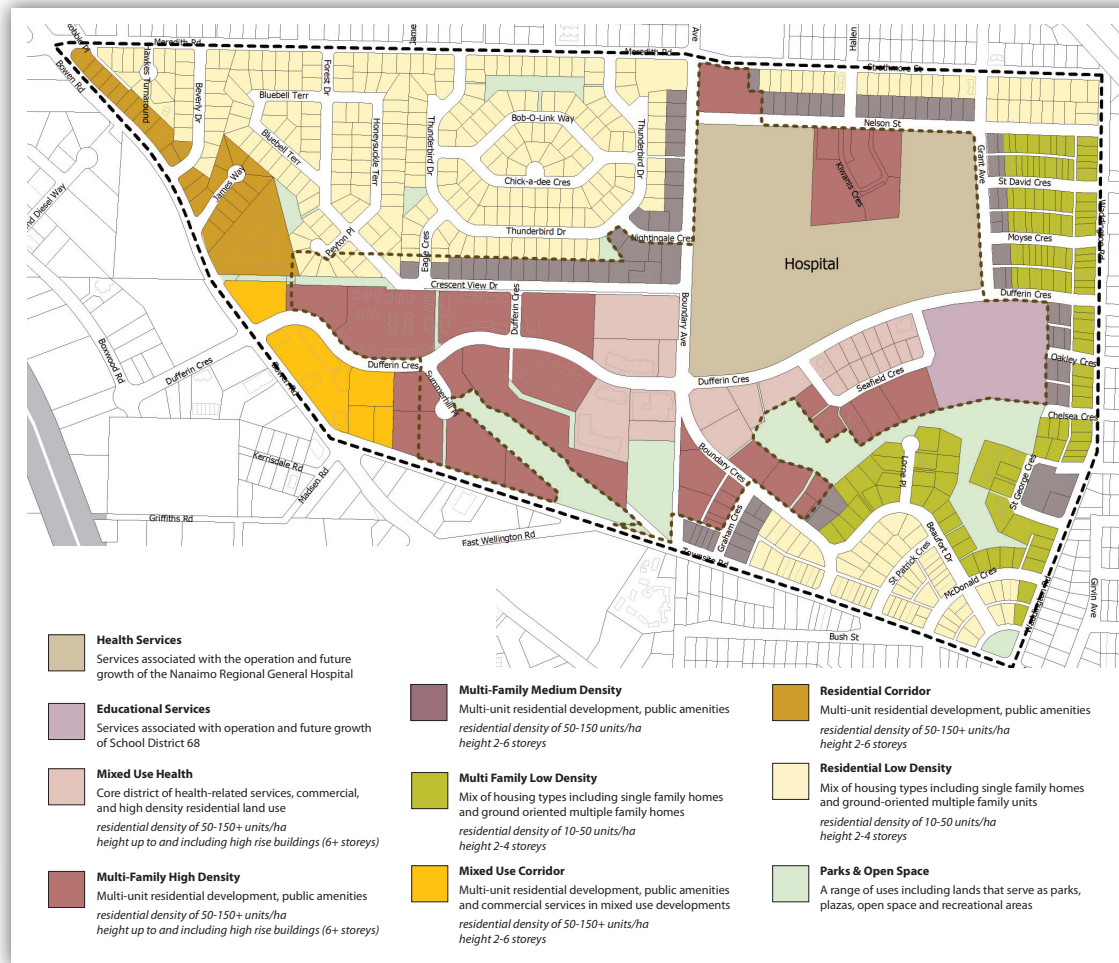


# Plan Area



# Draft Land Use Plan

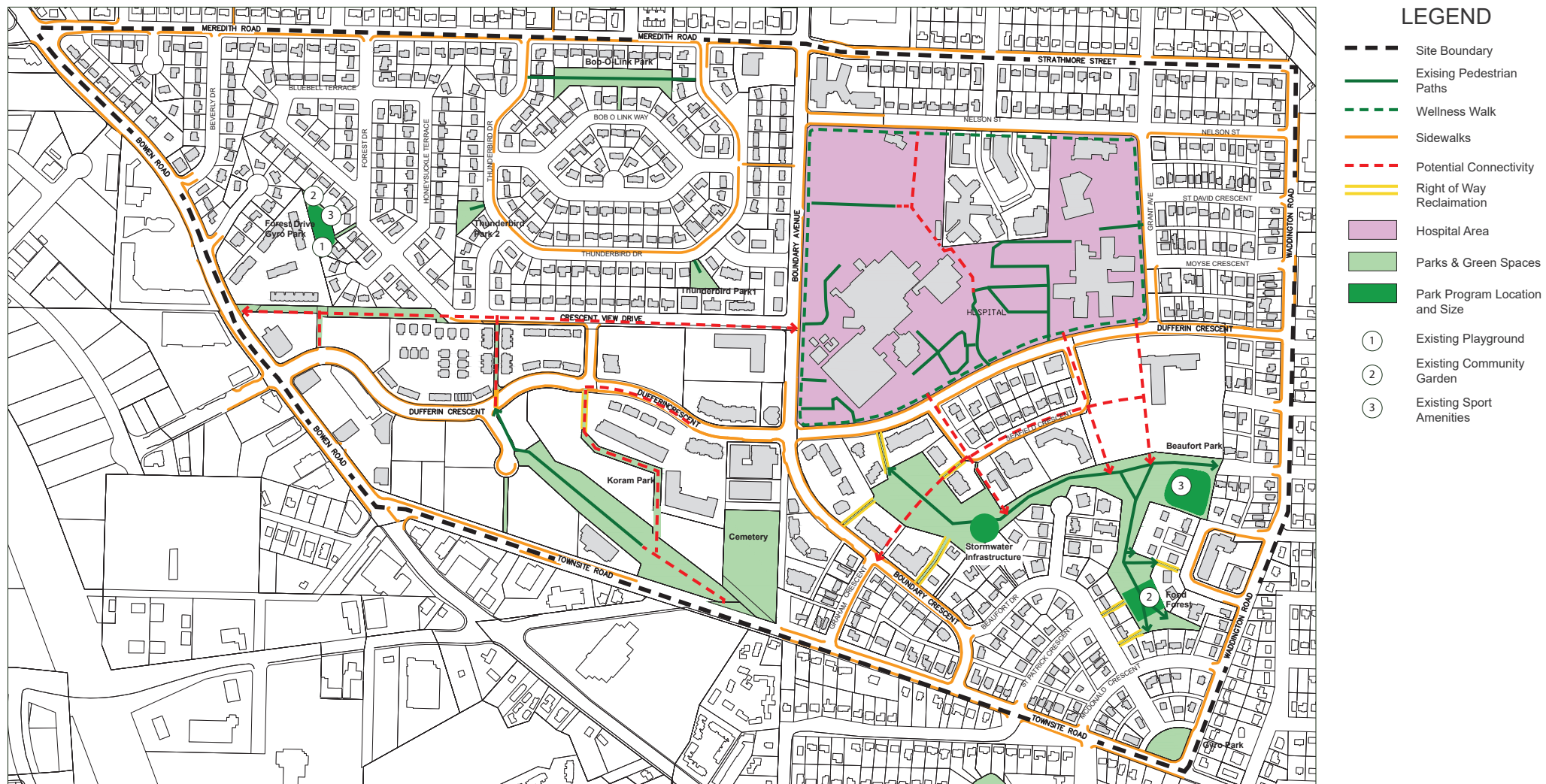
1



## Hospital Area Plan

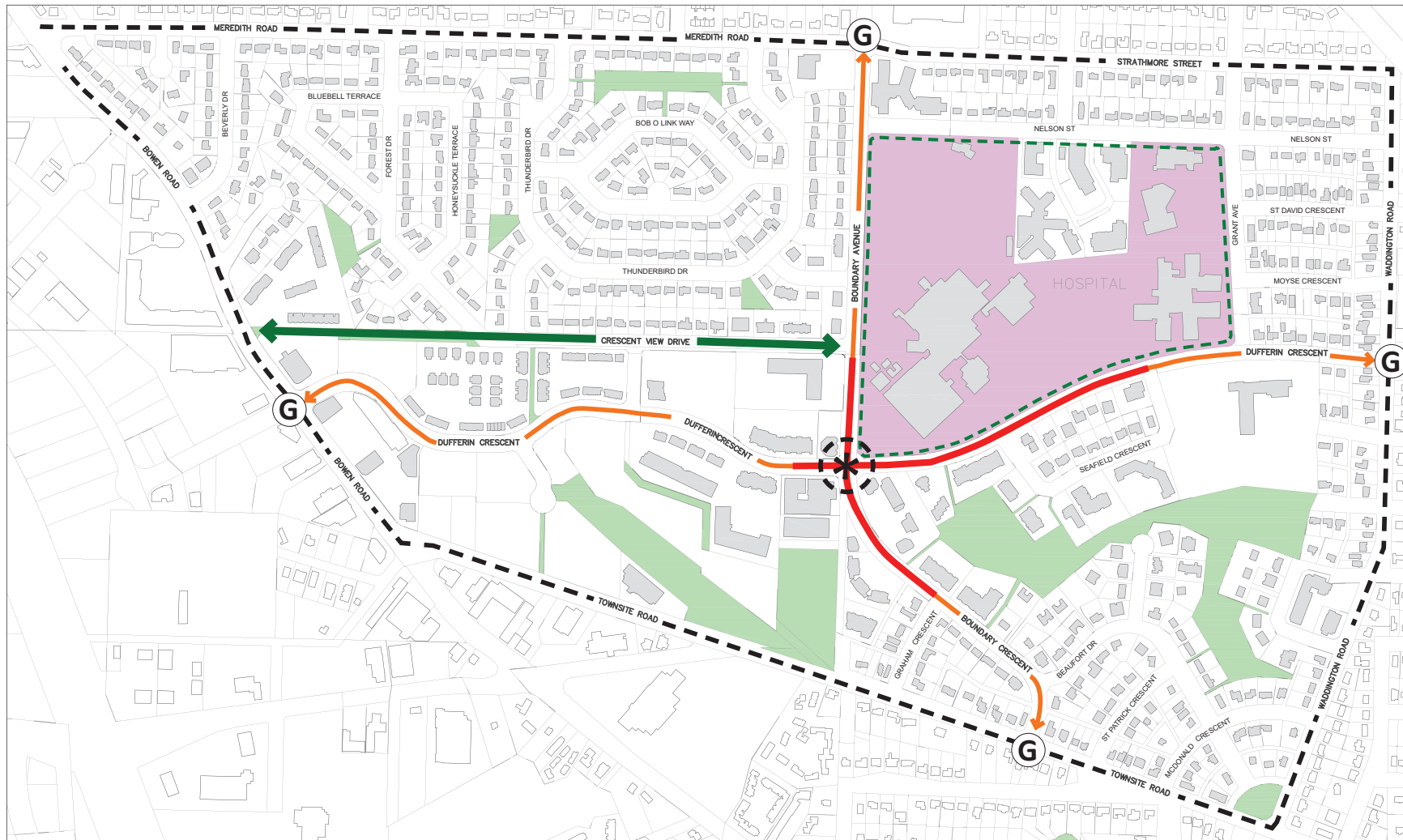


# Draft Open Space & Pedestrian Connectivity



## Hospital Area Plan

# Draft Street Character



## LEGEND

- Site Boundary
- Wellness Walk
- ↔ Major Roads
- Proposed High Street
- ↔ Proposed Greenway
- Hospital Area
- Parks & Green Spaces
- G Cardinal Gateways
- \* Proposed Core Intersection

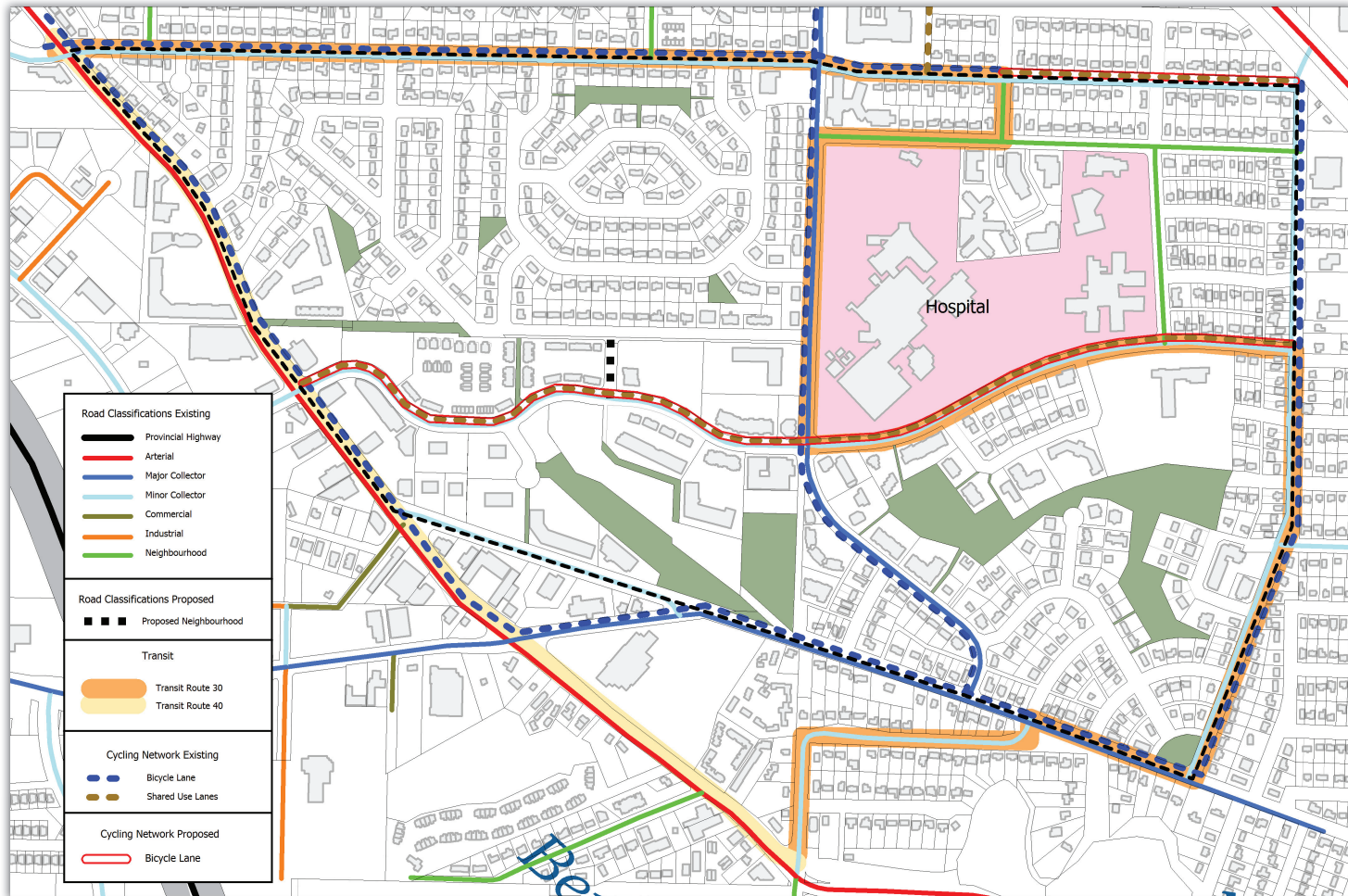
### Notes:

- Define Dufferin Crescent East as a Main Street with high level of urban design
- Define Boundary Avenue as major north-south axis with a high level of urban design
- Recognize the principle activity node/ core intersection.
- Reinforce the Hospital area Gateways.
- Provide urban design enhancements on Dufferin Crescent.
- Maximize park linkages.
- Reclaim R.O.W. links and reinforce Seaford Heights radial pattern.
- Maximize park connectivity, permeability and overlook.
- Improve Crescent View Drive as a Greenway.

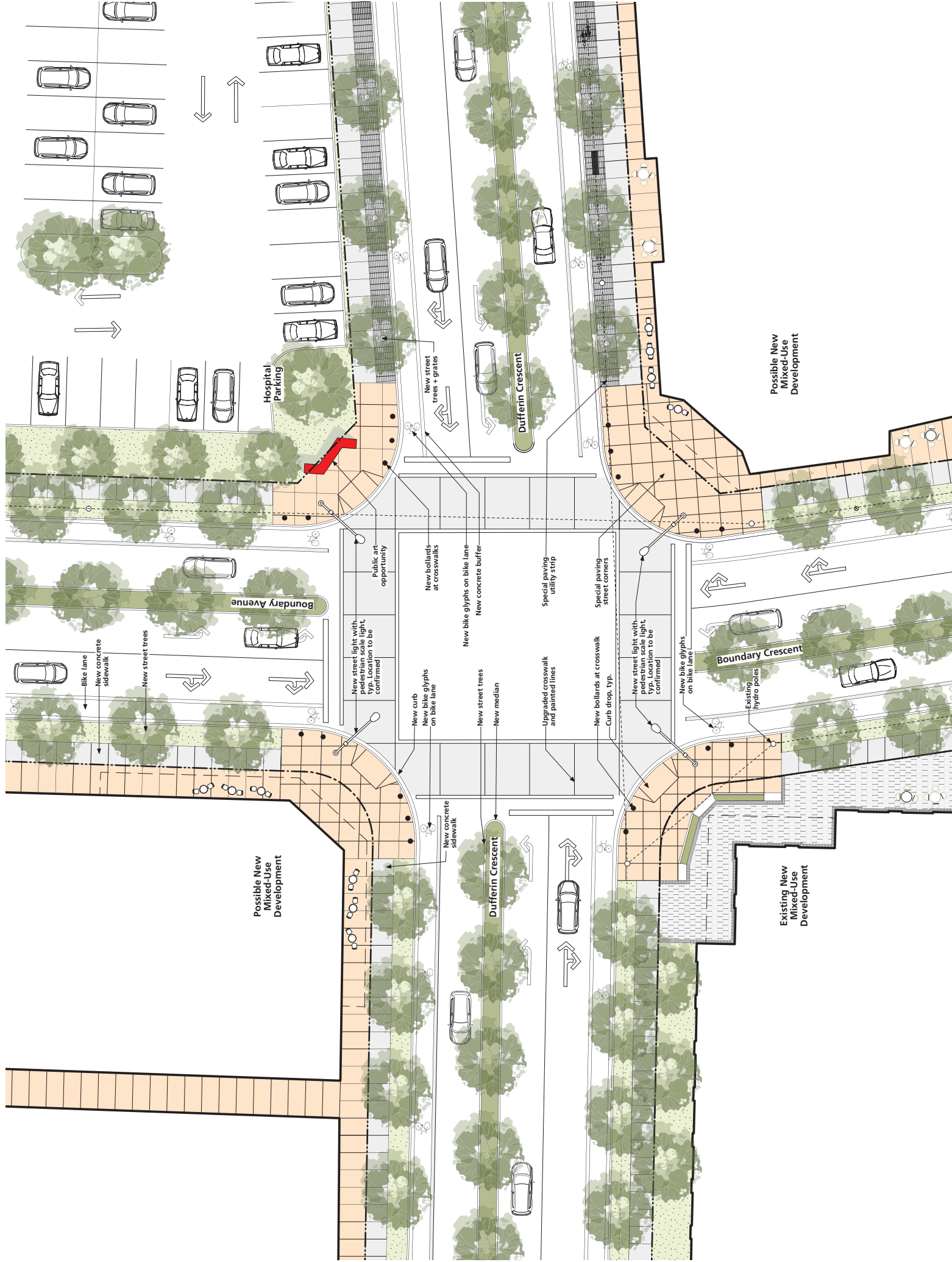


# Mobility Plan

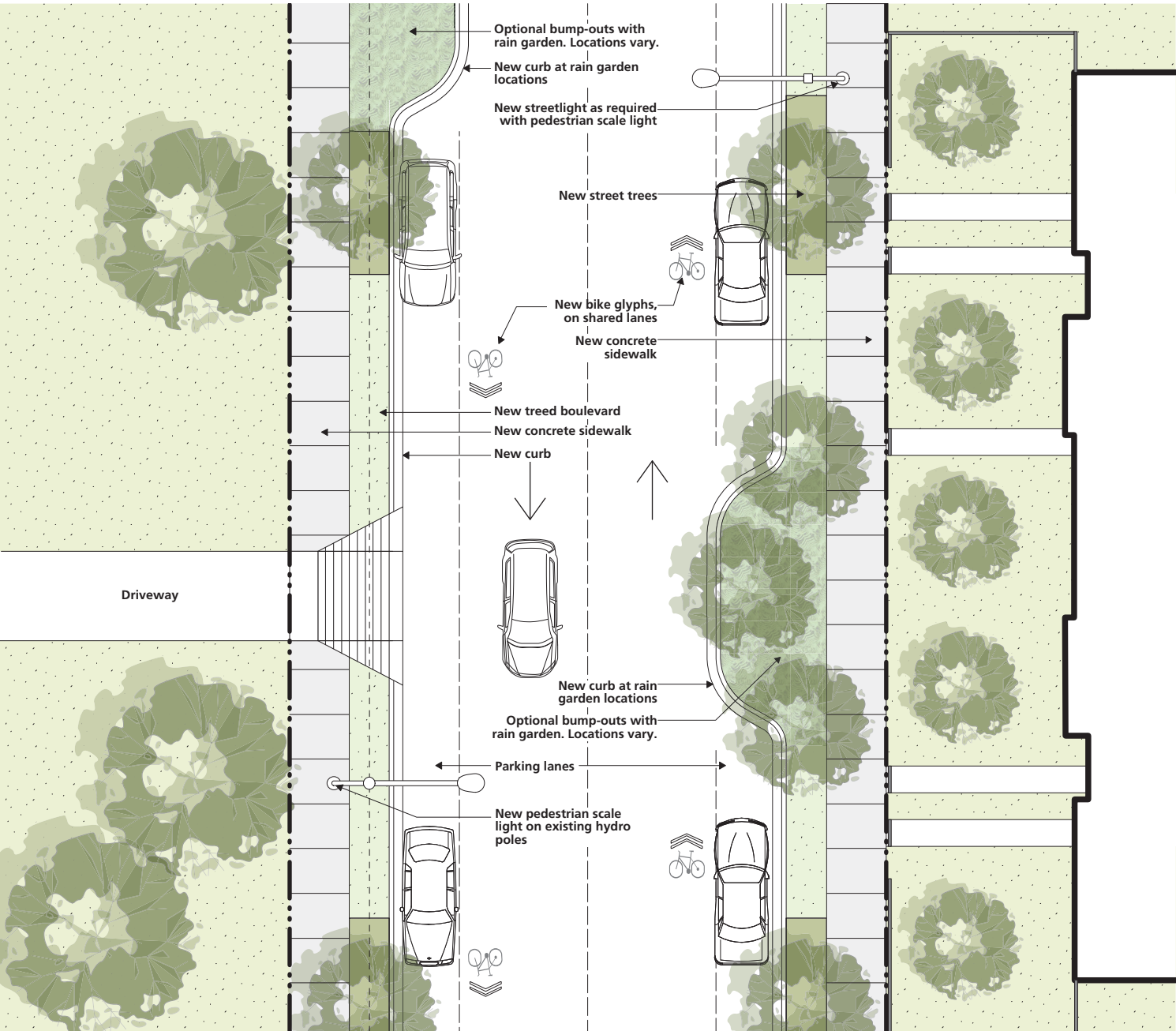
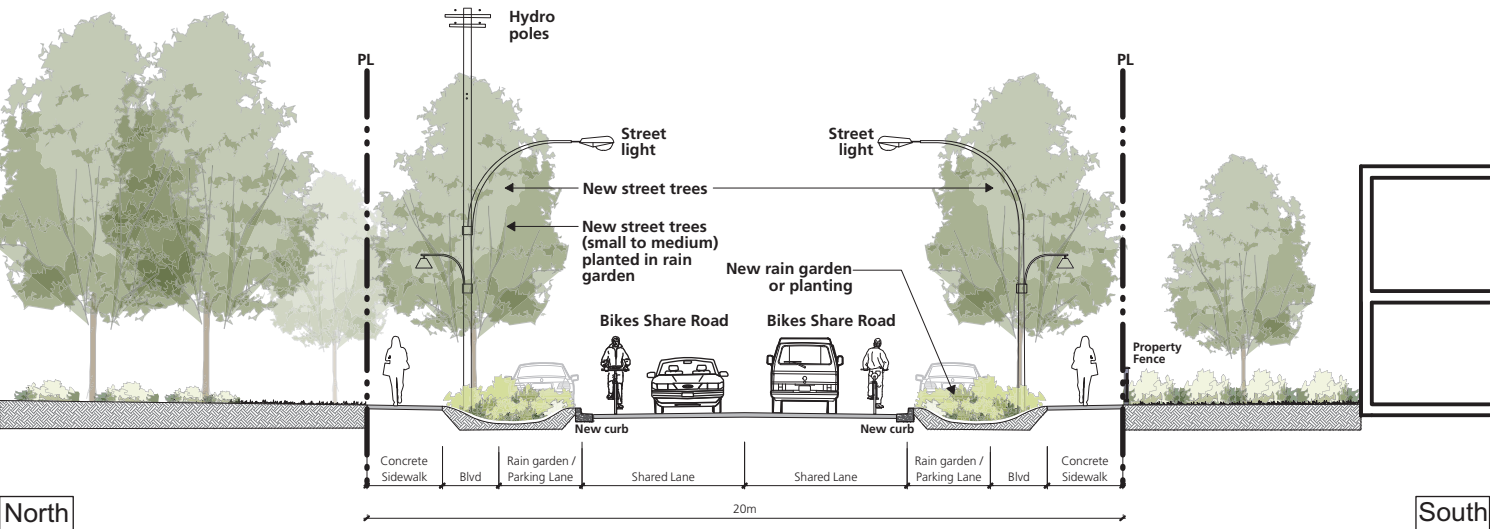
1

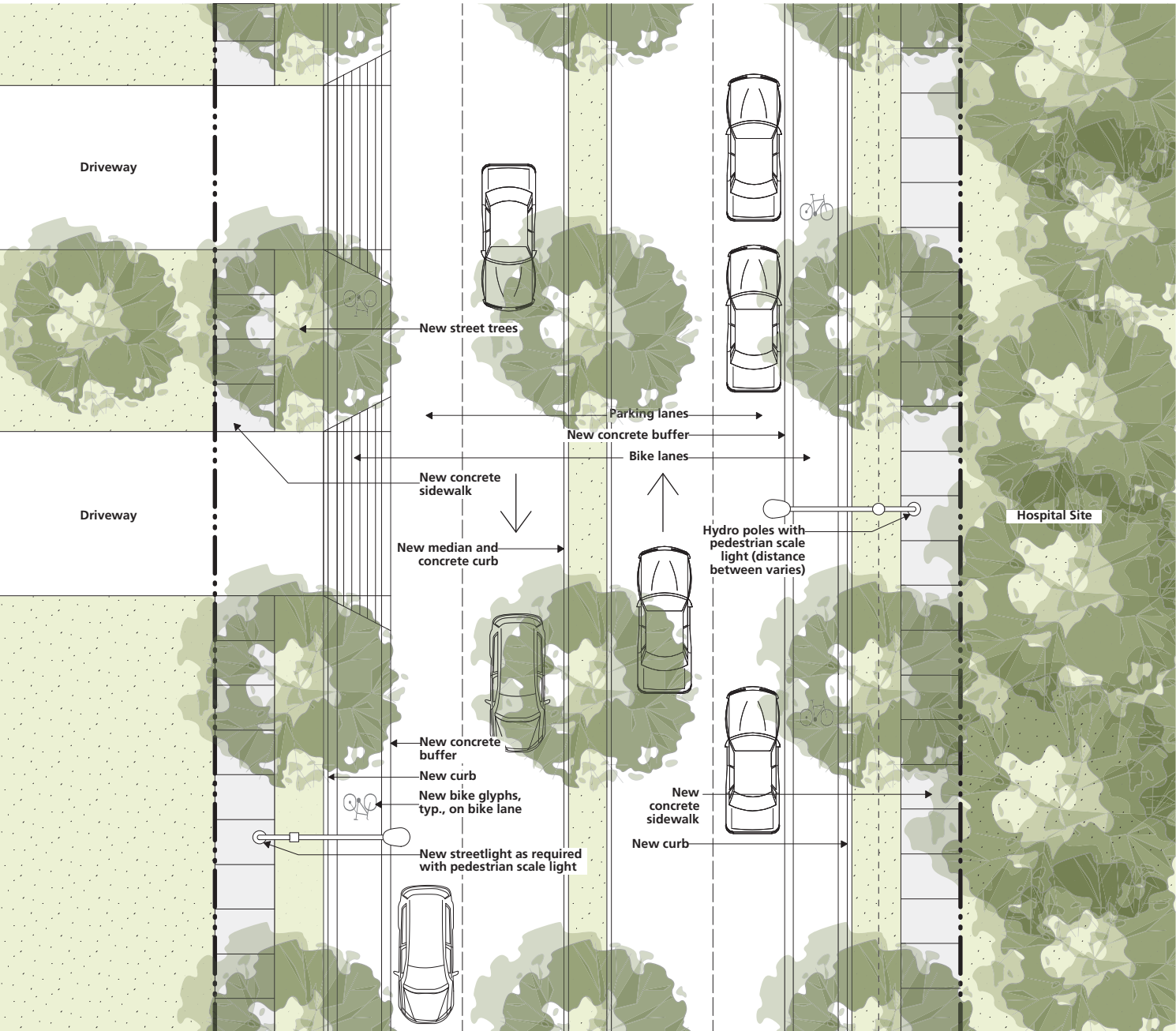
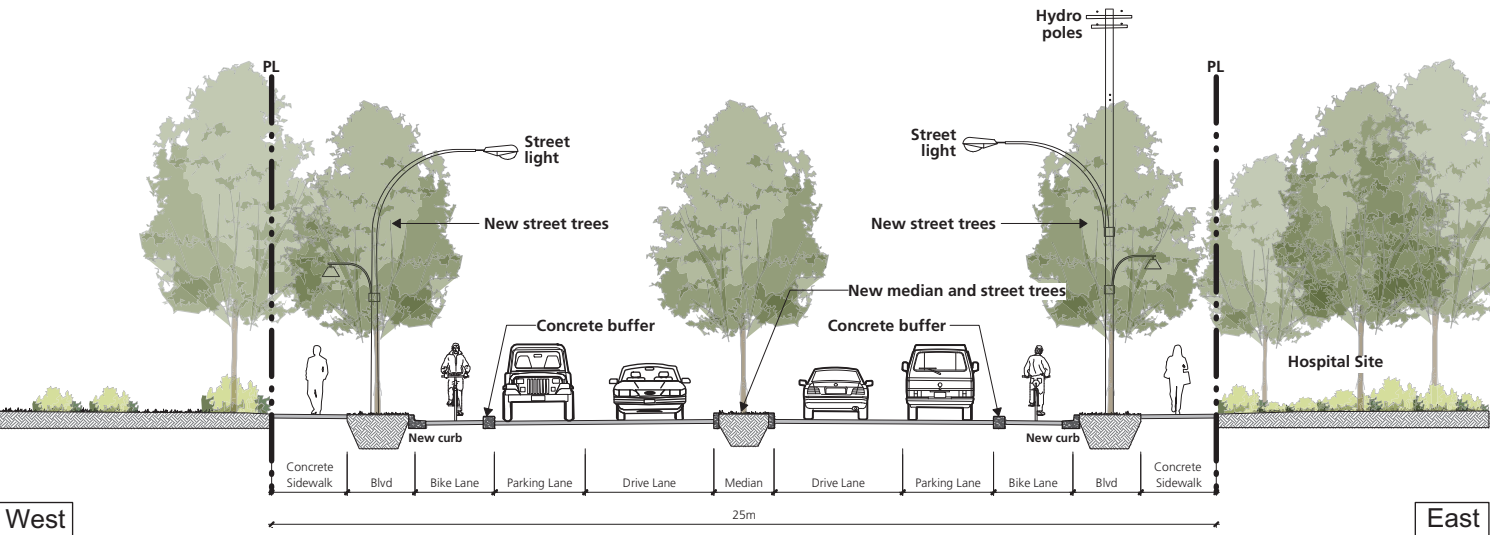


## Hospital Area Plan

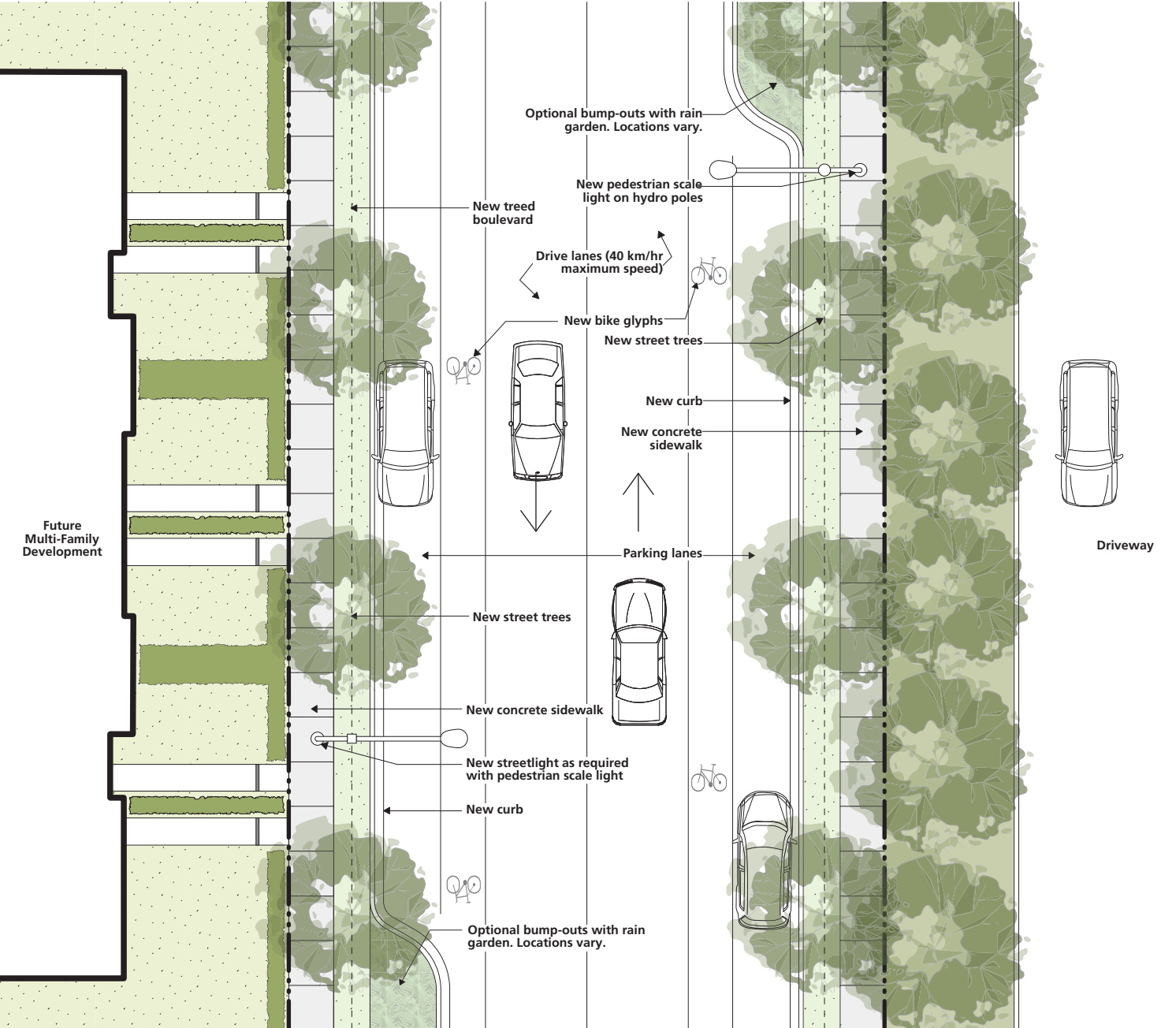
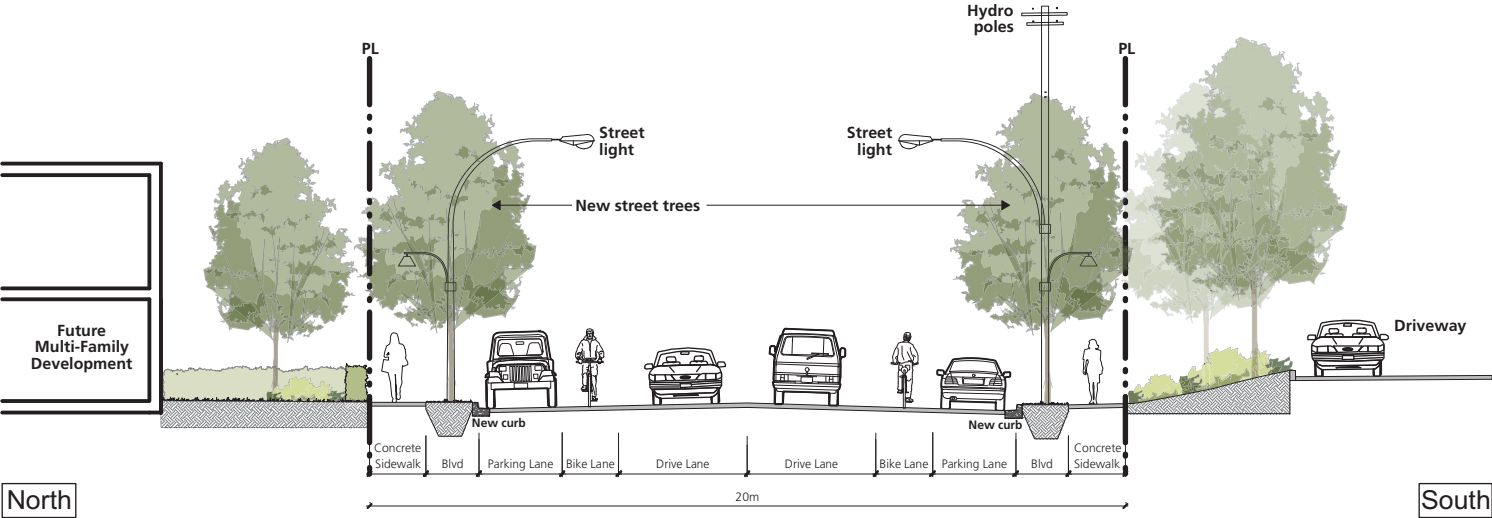




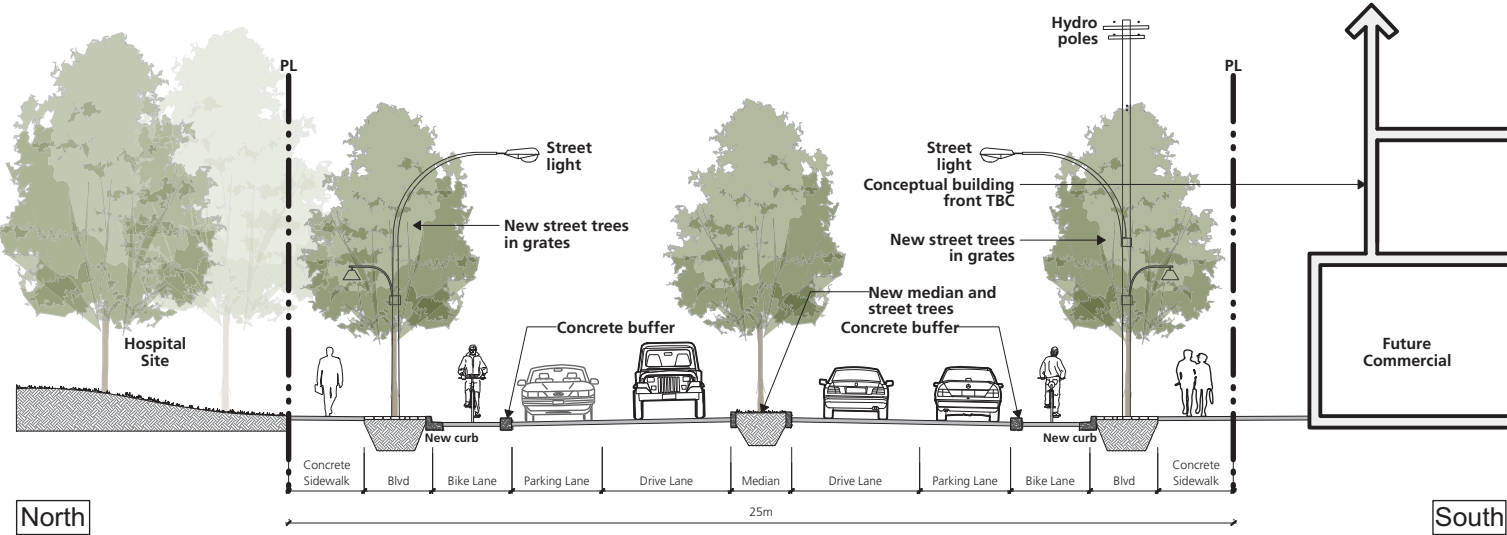






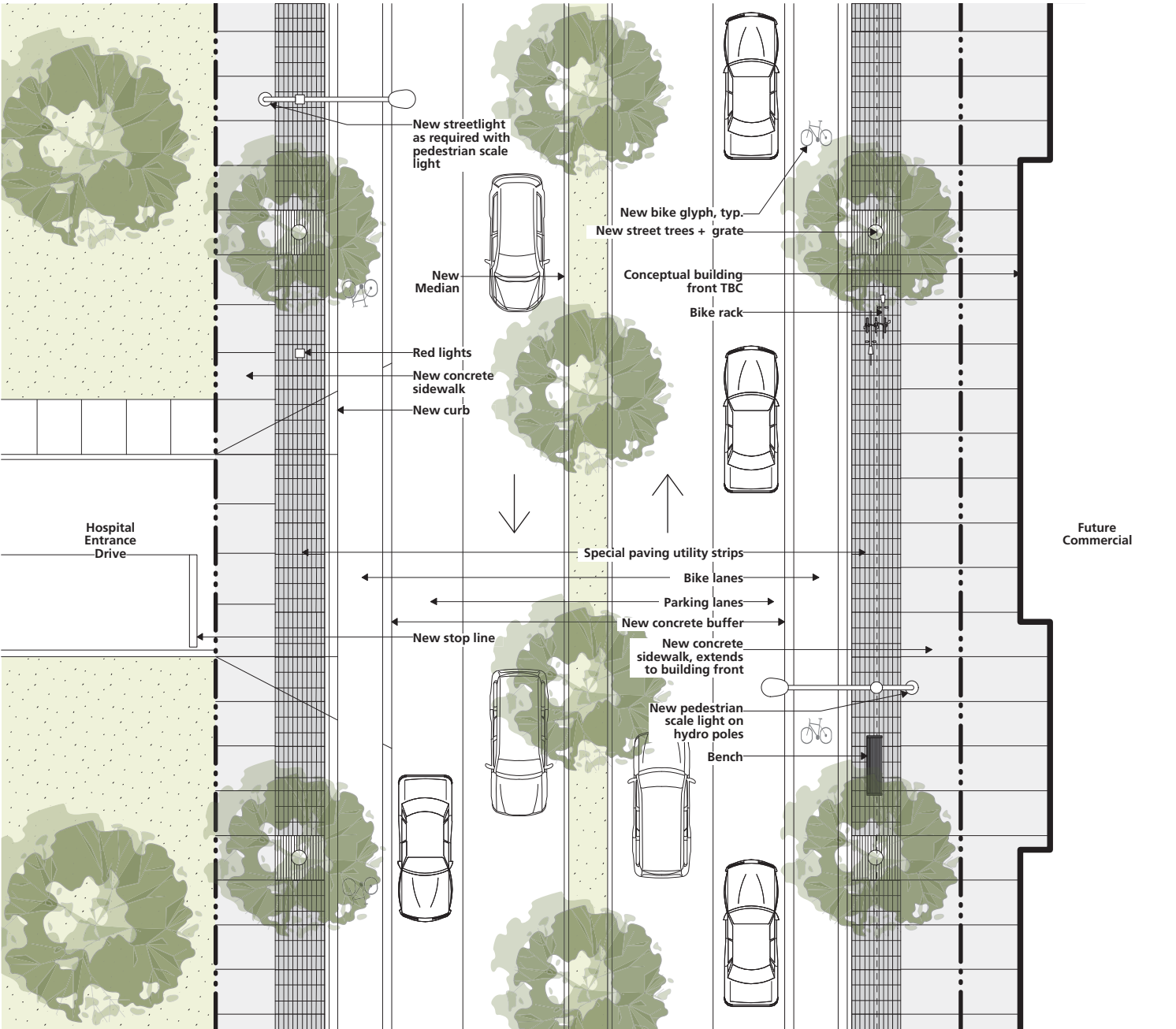


DUFFERIN CRESCENT (EAST) - MAIN STREET



North

South





# ATTACHMENT B

## DRAFT Hospital Area Plan

### Draft Table of Contents

#### A INTRODUCTION

- 1 Policy Context
- 2 Purpose and Plan Elements
- 3 Plan Context
- 4 Neighbourhood History

#### B PLAN PROCESS

- 1 Phase 1: Plan Initiation
- 2 Phase 2: Issues and Opportunities
- 3 Phase 3: Concepts and Options
- 4 Phase 4: Draft Plan
- 5 Phase 5: Final Plan and Adoption

#### C URBAN DESIGN FRAMEWORK

- 1 Urban Design Principles
- 2 Street Character and Public Realm
- 3 Pedestrian Connections and Open Space
- 4 Transportation, Transit, and Cycling Networks

#### D PLAN POLICIES

- 1 Guiding Principles – OCP Policy, Land Use Principles
- 2 Land Use and Development
- 3 Transportation and Infrastructure
- 4 Open Space and Connectivity
- 5 Parking Management
- 7 Relationships
- 8 Safety and Security

#### E IMPLEMENTATION STRATEGY

#### F GLOSSARY / HISTORIC PROPERTIES / MAPPING / FIGURES