

# Hospital Area Plan

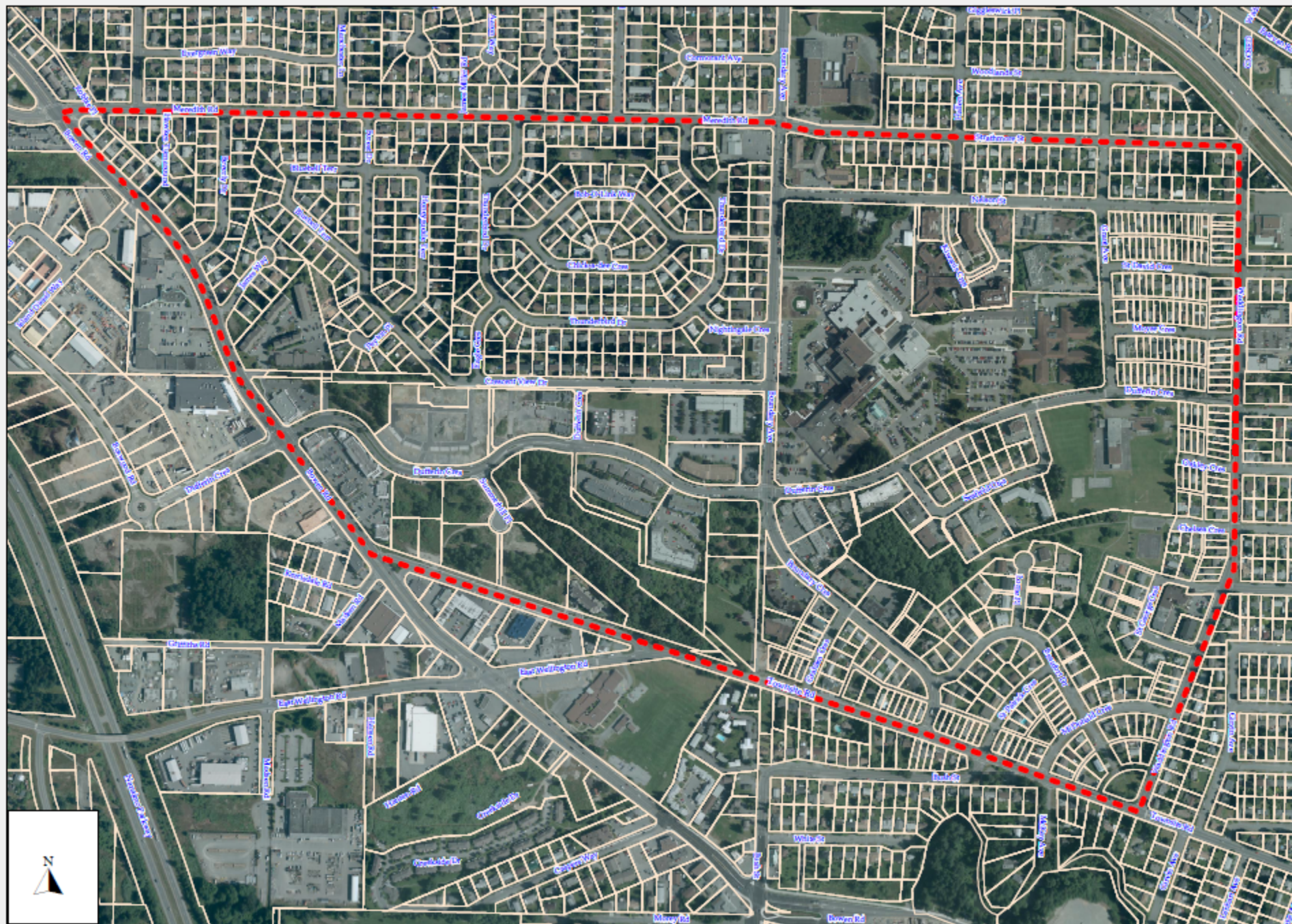


Community Planning and Development Committee  
November 15, 2016

# Hospital Area Plan Policy Context

- The Official Community Plan (OCP) identifies neighbourhood and area plans as key tools to implement the OCP by providing more detailed policies for a particular part of the city
- Goal Seven of the OCP Implementation Strategy identifies the Hospital Area Plan as an action item
- Policy 57 states the area plan is to be developed for the Hospital Urban Node “in consultation with area residents, business owners and stakeholders” (p. 40)







# Hospital Area

- 124.4 hectares (307 acres) in size
- Bounded by Bowen Road, Meredith Road, Townsite Road and Waddington Road
- Includes Nanaimo Regional General Hospital (NRGH), which serves the Nanaimo Local Health Area (pop. 108,000)
- Island Health currently completing a review of NRGH (expected Spring 2017) to expand service provision



# Hospital Area (cont.)

- Hospital Urban Node characterized by health services, seniors housing, professional offices and medium/high density rental housing
- Lands within the Plan Area outside the Hospital Urban Node are primarily designated as 'Residential' and zoned for single family dwellings
- Limited food service and retail options available within Plan Area
- Plan area included recent improvements to bicycle network, which included community engagement





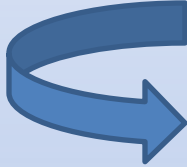
# On-Street Parking

- Documented concerns about the availability of on-street parking around the NRGH
- Planning to work with Transportation and Bylaw Enforcement to scope and consult on the parking issue as one of the Area Plan elements
- Plan deliverables will include a parking management strategy

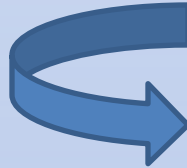


# Plan Initiation

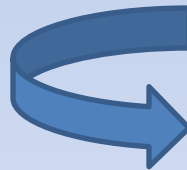
- Background Research
- Working Group Formation
- Terms of Reference Approval



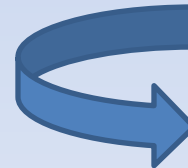
**Issues &  
Opportunities**



**Options Development**



**Draft Plan /  
Open House**



**Final Plan  
to Council**

# Next Steps

- Terms of Reference to Council in December 2016 for approval
- Collecting background information and studies
- Returning to CPD Steering Committee in early 2017 with update on process