

# Linley Valley Park Bio-Physical Assessment / BioBlitz Event



*Parks & Recreation*



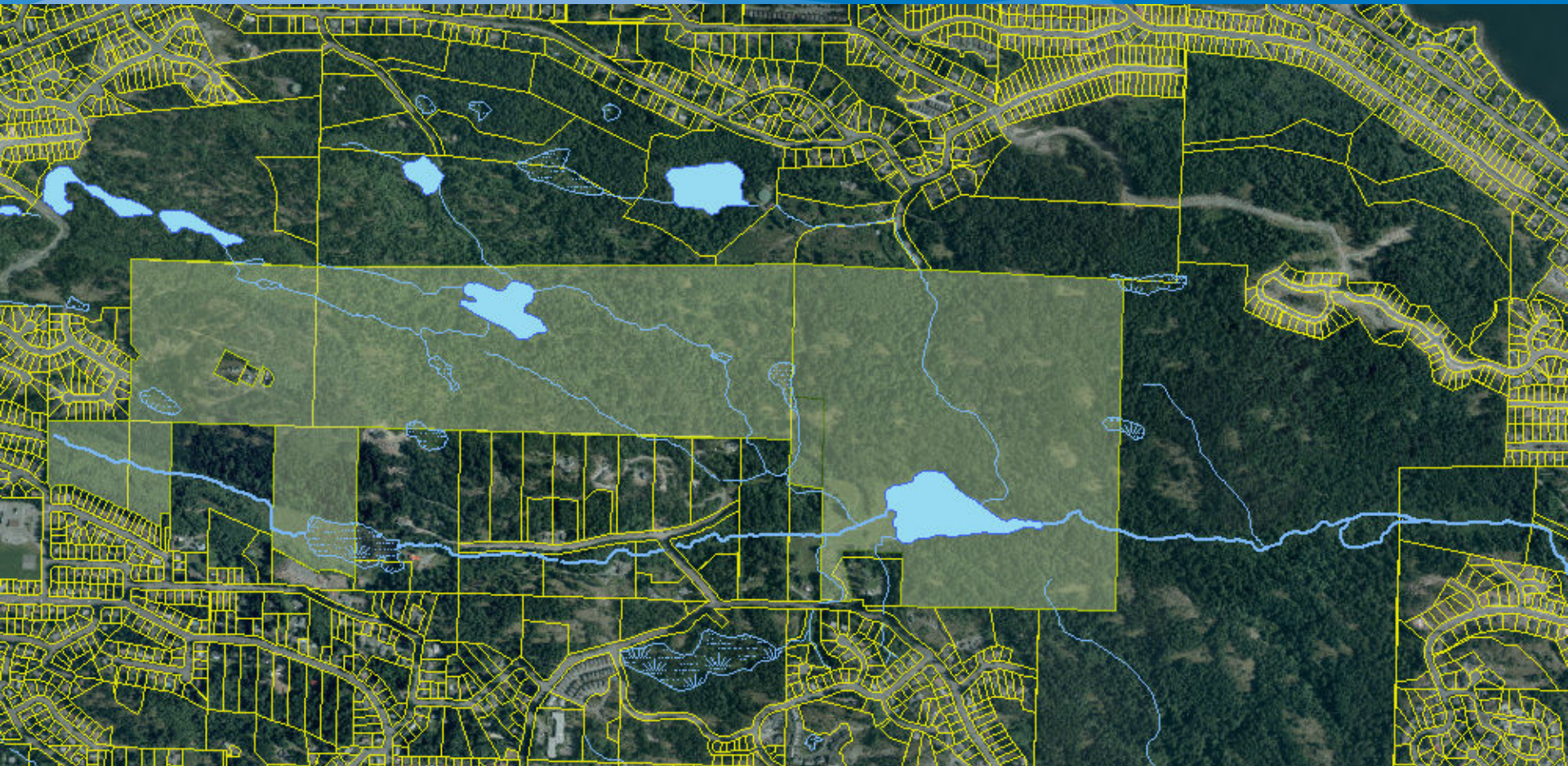
# Park Background

- Park acquired between 2004 (Cottle Lake) and 2014
- Made up of six parcels making up 378 acres of green space
- Zoned PRC 1 – Nature Park
- Currently all parcels remain undeveloped with a network of informal trails and old road beds.







# Park Area



**City of Nanaimo**  
Assessment Area

## Legend

-  Park
-  City of Nanaimo Trails

Published: July 15, 2016



Meters  
1:15,000

**CITY OF NANAIMO**  
THE HARBOUR CITY  
**Parks & Rec**

PARKS & RECREATION

# Parks & Recreation



# Park Planning Process



## **Planning Process:**

### ***Stage 1: Background and Project Start-Up (Spring 2017)***

- Collect biophysical site information
- Trail use assessment

### ***Stage 2: Assess Park Vision and Priorities (Summer 2017)***

- Interview park stakeholders, user groups
- Conduct site tours and interpretive walks to introduce public to the park

### ***Stage 3: Plan Preparation (Fall 2017)***

- Compile survey, stakeholder input.
- Draft park vision and plan options and seek input and present to committee for review and comment

### ***Stage 4: Draft Plan Review and Adoption (2018)***

- Make revisions to draft park plan and present them to public and stakeholders for public review and input.
- Present the final Master Plan and summary of input to Committees and City Council for review and adoption

# Bio-Physical Assessment of Linley Valley

## Biophysical Assessment of Linley Valley Park: RFP No. 1805

**Prepared For**  
City of Nanaimo  
Purchasing Department  
2020 Labieux Road  
Nanaimo, B.C. V9T 6J9

**Prepared By**  
EDI Environmental Dynamics Inc.  
208A – 2520 Bowen Road  
Nanaimo, BC V9T 3L3

**EDI Contact**  
Jackie Churchill, M.Sc., R.P.Bio.  
Email: jchurchill@edynamics.com  
Phone: 250-751-9070

**EDI Project**  
16N0334  
September 2016

**Down  
to Earth  
Biology**

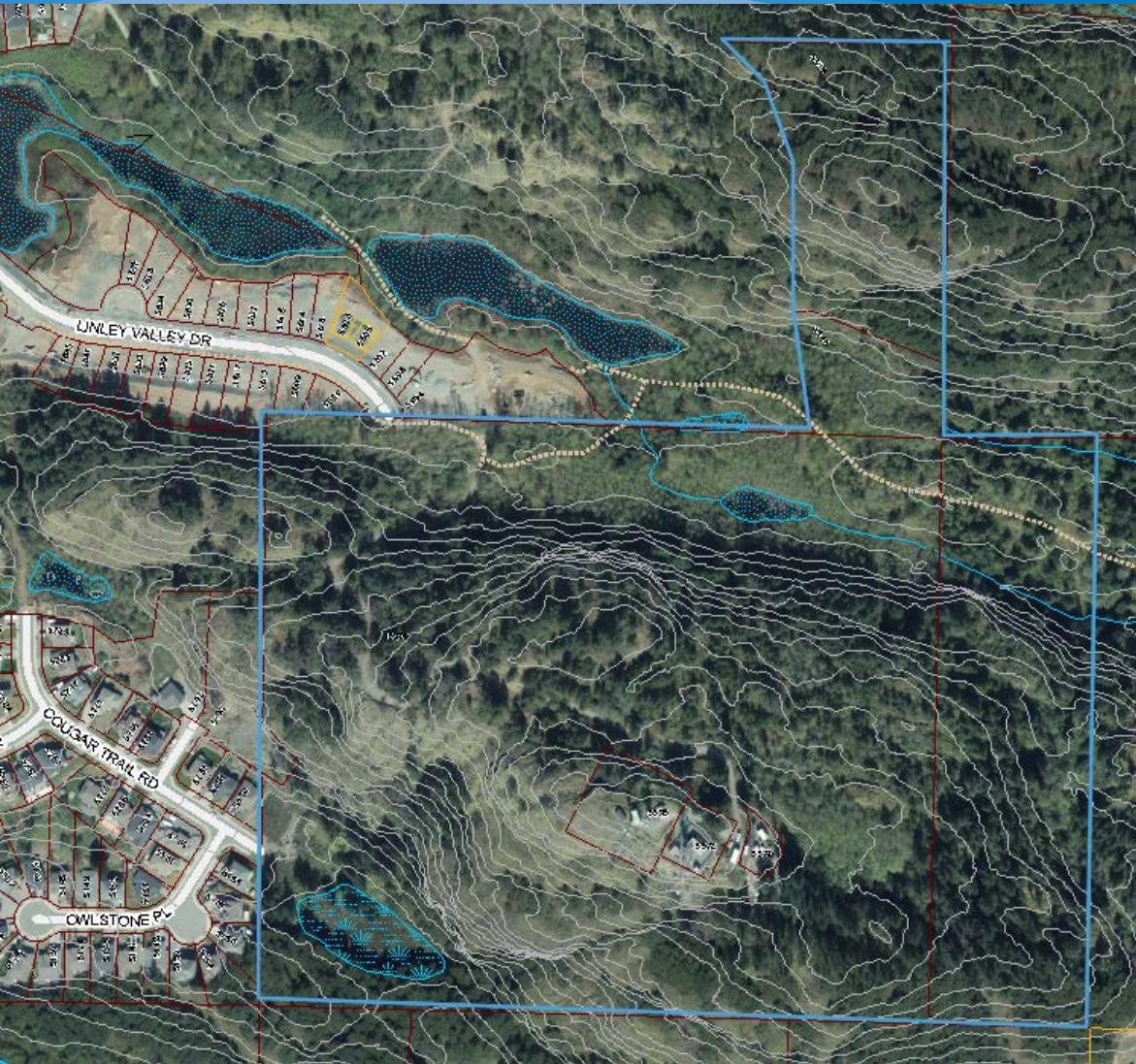


- Consultant hired in October 2016 to complete a one year assessment of Linley Valley Park
- Clearly define and map park environment assets and unique features
- Collect a detailed baseline data and Develop recommendation on park management based on current ecosystem make-up and potential enhancement opportunities

*Parks & Recreation*



# Community BioBlitz



On May 30th, surrounding residents and science students from NDSS, Wellington and Dover Bay are invited to participate in a BioBlitz

A BioBlitz involves 'citizen scientists' paring up with local naturalists and professional biologists to conduct an ecological inventory of specific site.