

# Former Greater Nanaimo Water District Lands



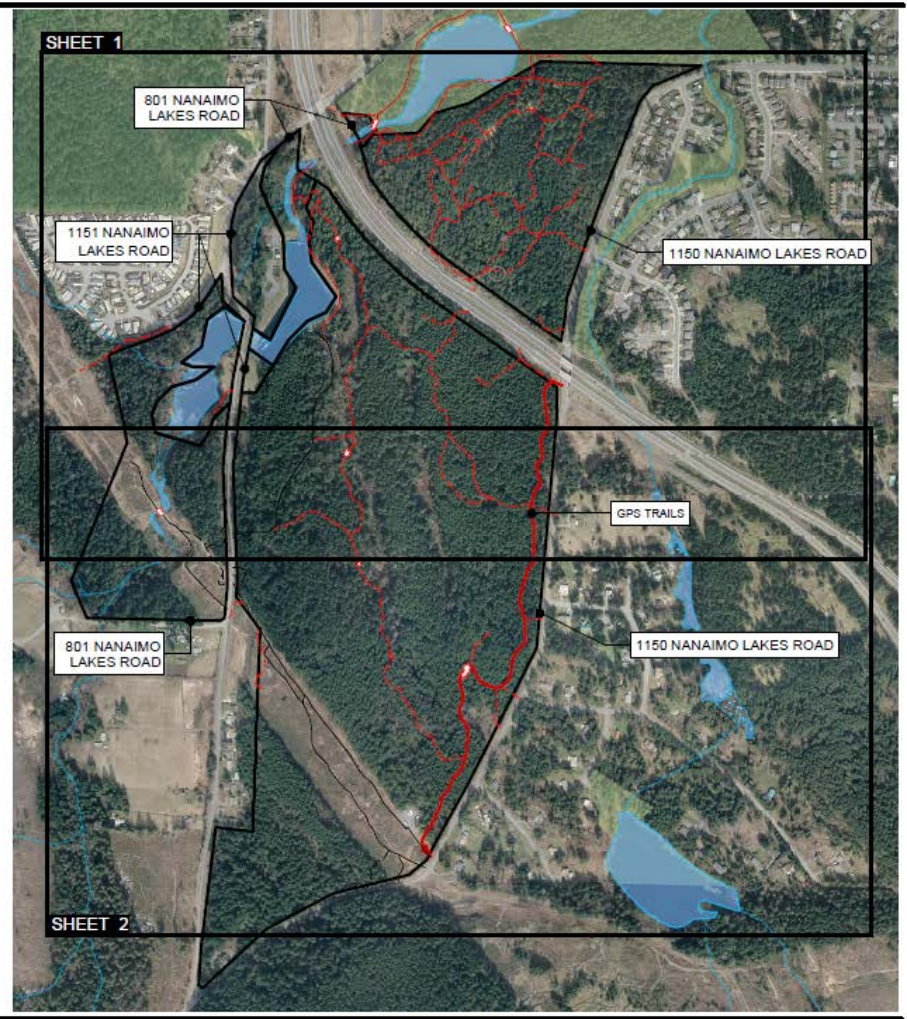
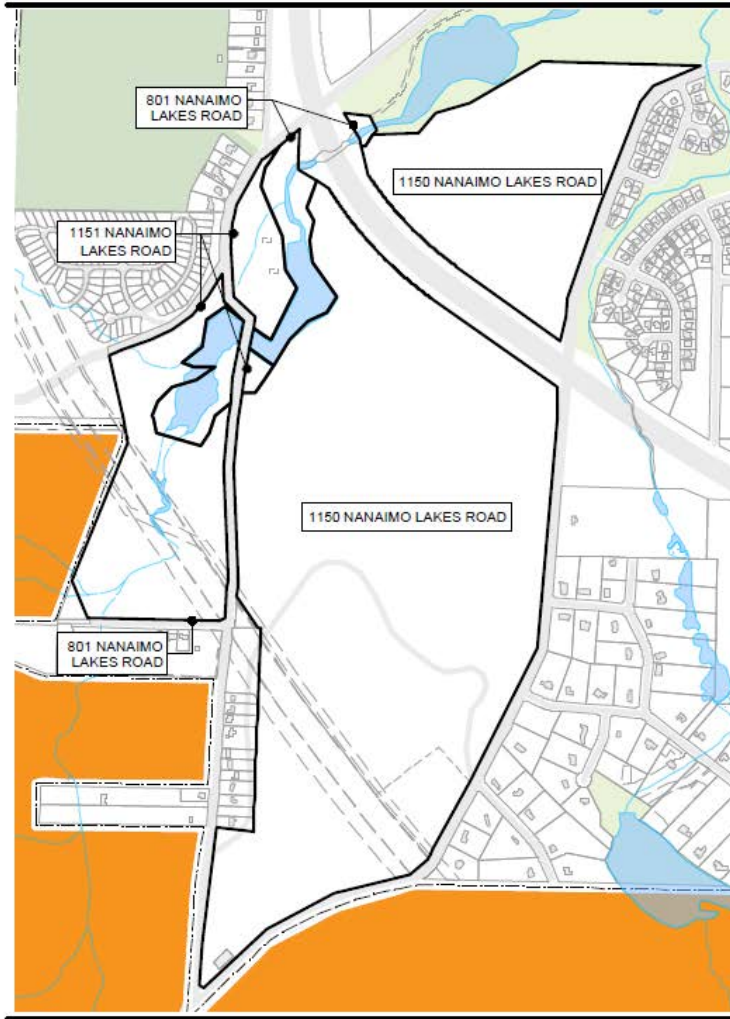
## Update on Future Use Review

Richard Harding  
Director, Parks and Recreation  
Department

Rob Lawrance  
Parks and Open Space Planner  
Parks and Recreation Department



# Study Area



Existing Conditions, 801 Nanaimo Lakes Road - 3 Parcels, 13.87 Acres  
1150 Nanaimo Lakes Road - 2 Parcels, 201.1 Acres  
1151 Nanaimo Lakes Road - 3 Parcels, 33.36 Acres

SHEET 1 of 3  
December, 2012

## **Stage 1: Review of Existing Conditions**

- Base mapping
- Biophysical site inventory
- Archaeological assessment

## **Stage 2: Assess Priorities for Park and Recreational**

- Obtain public and stakeholder input

## **Stage 3: Report Preparation**

- Review input received and present recommendations to the Parks, Recreation and Wellness Committee.
- Report back to council with results and recommendation.





# Archaeological Overview Assessment



## Archaeological Overview Assessment for Proposed Park Land at 1150 and 1151 Nanaimo Lakes Road, Nanaimo, BC

for:

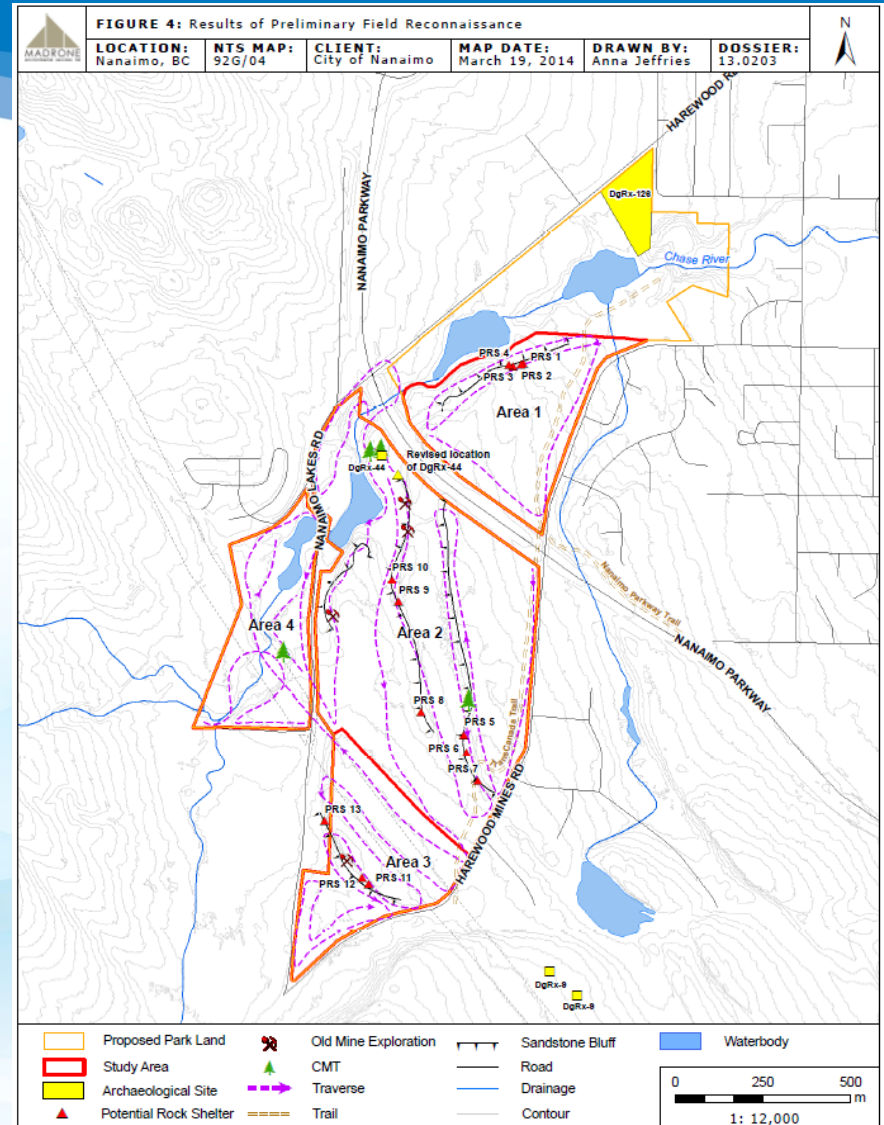
City of Nanaimo  
c/o Kirsty MacDonald  
Parks and Open Space Planner  
455 Wallace Street  
Nanaimo, BC, V9R 5J6

by:

Madrone Environmental Services Ltd.  
1081 Canada Avenue, Duncan, BC, V9L 1V2

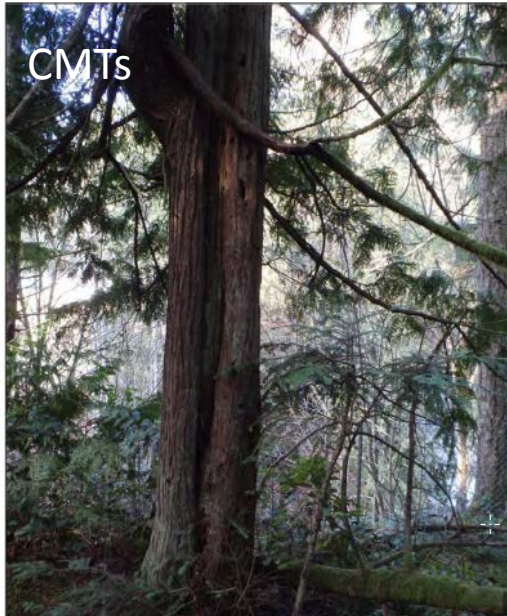
March 26, 2014

Dossier 13.0203





# Archaeological Significance



CMTs



Former Bathing Pool Site



Plate 24. Looking southwest at possible old rail bed from PRS 9, stream crossing.



Recent History

Plate 37. Area of coal exploration between PRS 12 and 13.



Harewood Mines Road visible through trees



# Biophysical Site Assessment



## GREATER NANAIMO WATER DISTRICT LANDS (GNWD) BIOPHYSICAL ASSESSMENT – PHASE II

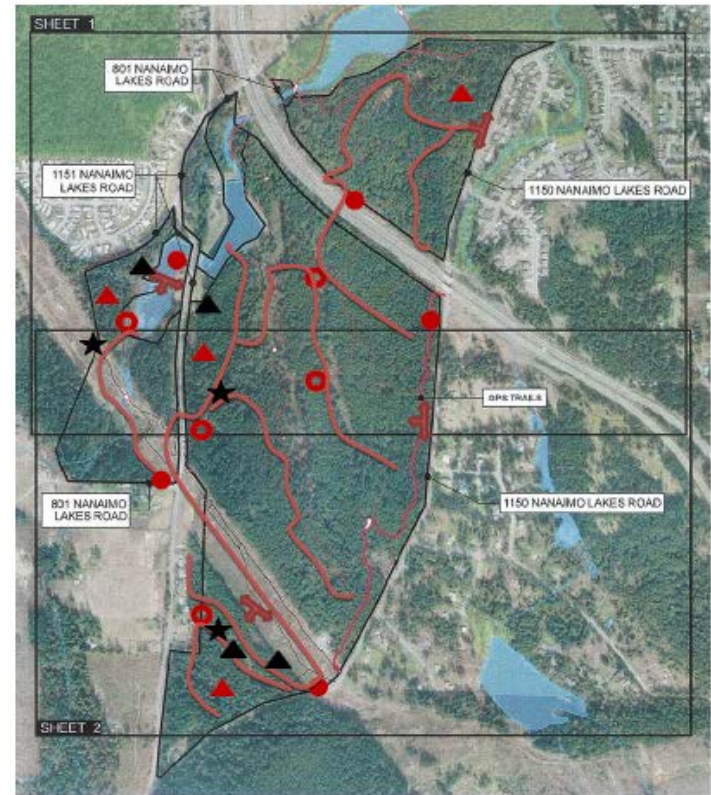


Prepared for:  
Kirsty MacDonald  
City of Nanaimo, Parks, Recreation and Culture  
500 Bowen Road, Nanaimo, BC, V9R 1Z7  
January 7, 2014

503 Comox Road Nanaimo, BC V9R 3J2, 250-591-2258  
Cell SARAH BONAR 250-714-8446 CHRIS ZAMORA 250-714-8864

GNWD Lands  
Biophysical Assessment  
January 7, 2014

35



### LEGEND:

- Foot reconnaissance routes
- Owl call-playback stations
- Eagle/heron stand-watch locations
- Lentic amphibian egg mass search locations
- Terrestrial amphibian search locations
- Bat detector listening post
- TrailMaster TM1500 remote camera system



# Biophysical Site Significance

Ridge/shelter  
Habitat



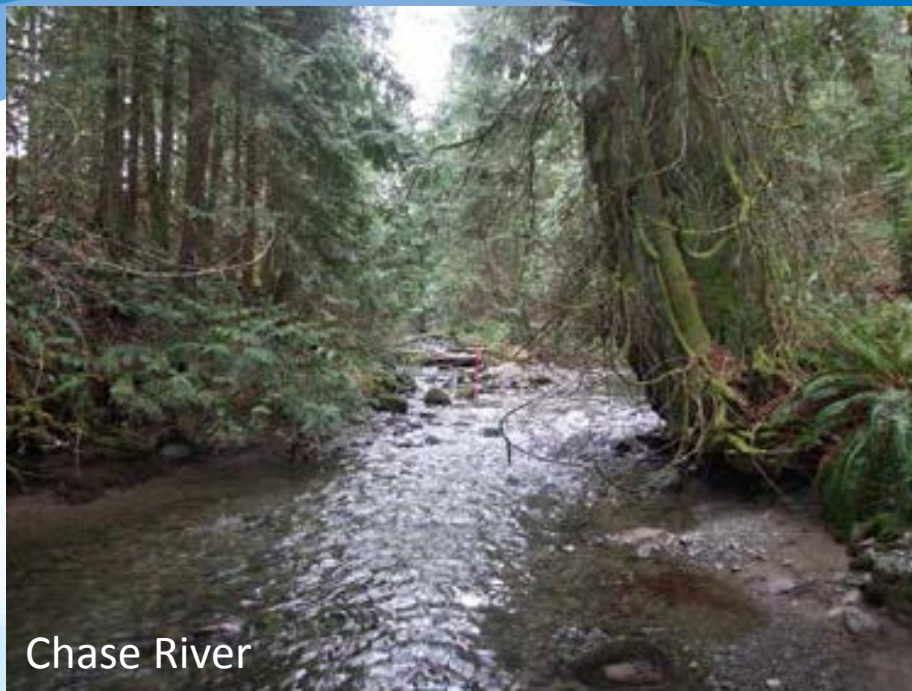
sandstone ridges (3)





# Biophysical Site Significance

Riparian Habitat



Parks & Recreation



# Site Infrastructure



Former Reservoir No. 1



Natural Gas Right of Way



Parks Yard Annex



Animal Shelter





### Stakeholder Interviews

- Nanaimo Mountain Bike Club
- Nanaimo Fish and Game Club
- Nanaimo Search and Rescue
- Vancouver Island University
- Nanaimo Economic Development Corp.
- Harewood Neighbourhood Association / Colliery Dam Preservation Society
- Snuneymuxw First Nation
- City of Nanaimo Water Services



Parks Yard Annex



# Public Consultation

Open House and Online  
Survey

Open House held at the Parks Annex Building on December 3rd 2016  
Online survey run from October 2016 to January 2017

- Questions asked respondents on their awareness and use of the old GNWD properties
- 47 open house questionnaires and 75 online surveys received
- Over 90% in favor of seeing the GNWD lands designated for park use
  - High level of interest in protecting natural features
  - Many comments on improving the trails network and working with Nanaimo Mountain Bike Club to create trails for entry level riders
- Also heard:
  - Strong support for utilizing space for a new SAR facility
  - Some support for affordable housing on portions of the property already disturbed or along Harewood Mines Road
  - Interest in developing a community 'demonstration forest' to highlight good forest management practice.
  - Opportunities to access land for traditional harvesting



# Next Steps

- Waiting to receive results from a Servicing Study for GNWD lands / Harewood Mines Road
- Hold a second open house on the ideas suggested through the stakeholder meetings
- Return to Council with a report on recommended Future Uses for the GNWD lands