



DEVELOPING ENVIRONMENTAL STEWARDSHIP IN OUR PARKS

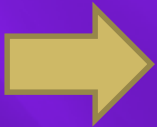
VOLUNTEER PROGRAMS IN OUR PARKS

- Why this program started.
- How it has evolved.
- Where we continue to see it grow.

- The Volunteers in the Park Program (VIP) now known as Partners in Parks (PIP) was initiated by the City in 1982 as a way of developing neighbourhood parks.
- The PIP is a public participation program designed to bring the ideas and efforts of volunteers together with the City of Nanaimo, Department of Parks & Recreation in order to create, develop and improve our parks and open spaces.
- This program utilizes the talents, skills and energy of volunteers to develop, maintain and beautify Nanaimo's many new and old open spaces, parks and trails.
- PIP activities get people outside “working together” to improve Nanaimo's parks and open spaces.

Partners in Parks Opportunities:

- Neighbourhood Playground Development
- Community Gardens
- Park Beautification and Tree Planting
- Gatekeepers & Park Naturalists
- Public Art
- Park Ambassadors
- Eco Club/School Group Ecological Stewardship Projects (Bio Blitz - invasive plant removal, restoration, ecological monitoring)
- Invasive Plant & Garbage Removal Work Parties
- **Adopt-A-Park Program**



PARK AMBASSADOR PROGRAM



Currently we have 18 individual volunteers who visit over 20 of our local parks and trails on a regular basis as part of our Park Ambassador Program.

They are involved in invasive plant and garbage removal in the park and provide information and education to park users.

They also help to maintain a personal level of service in our parks, trails and open spaces by their presence and in reporting park or trail issues to the Parks Operations Department.



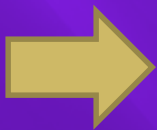
STUDENT ECOLOGICAL STEWARDSHIP PROGRAM



- Educating our youth to become environmental stewards is important for the future of our parks and natural surroundings and the conservation of our region's biodiversity.
- Developing this environmental awareness at a young age will hopefully translate into eco-sensitive decisions made into adulthood.
- Educating our youth will allow them to lead by example and challenge their parents and the adults in our community to make wise, environmentally conscious choices

▣ Examples of Student Ecological Stewardship projects:

- Plant Identification – native and invasive
- Removal of ladder fuel (forest fire hazards)
- Plant Mapping (Barefoot Mapping)
- Invasive Plant Removal
 - ▣ Periwinkle Removal in Neck Point (Dover Eco Club)
- Restoration - replanting & watering of new native plants
 - ▣ Planting of Snowberry Shrubs in Neck Point (Dover Eco Club)
- Student Partnerships with NS3 and the Great Shoreline Clean Up Initiative ie. Trash to Treasures
- Involvement in the **Adopt-a-Park Program** – ongoing stewardship in one particular park





**Cinnibar Valley
Elementary School**

**Garbage Collected from
Chase River Estuary
Park**



Departure Bay Elementary School

Daphne Removal – Wardroper Park



First Neck Point Scouts

English Ivy Removal in Bowen Park



Departure Bay Elementary School and Departure Bay Stream Keepers

Restoration in Woodstream Park





**Dover Bay Secondary School & VIU
Community Care Group**
Native Plant Restoration
Neck Point

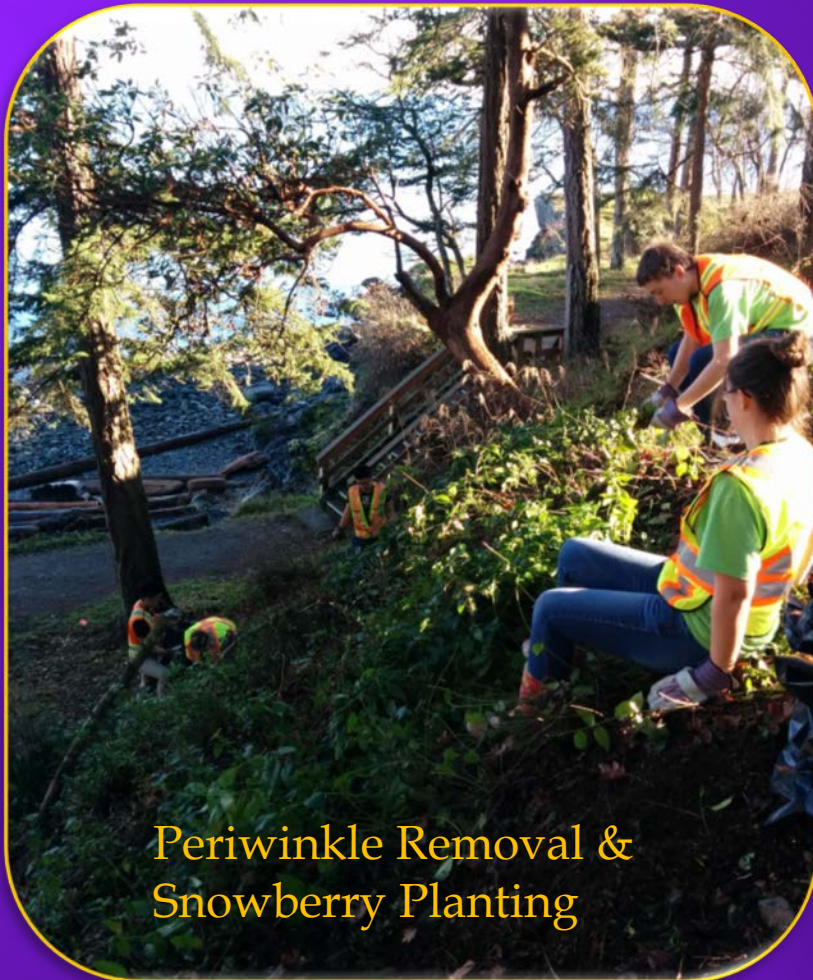


Nanaimo District Secondary School
Black Berry & Broom Removal
at Third Street Park



Nanaimo Christian School
Daphne Removal
Piper's Lagoon

Dover Bay Secondary School Eco Club



Periwinkle Removal &
Snowberry Planting



Tree Planting Camas Park



Broombusting – McGirr Sports Fields

Linley Valley Bio-Blitz



- Bringing Biologist and Students together
 - Wellington, Dover Bay , NDSS, Connect Ed
- Training, Mentorship
- Ecological monitoring
- Areas of Study:
 - Terrestrial Wildlife Inventory Techniques
 - Wetland Inventory Techniques and Guided Walk
 - Plant Identification and Survey Techniques
 - Bird Identification and Guided Walk
 - Owl and Bat Survey Methods Walk – open to the public

Linley Valley Bio Blitz



Community WorkParties



**Take-A-Hike
Harewood Plains**



DFO - Piper's Lagoon



Barsby Park



Broombusters & DBNA

Adopt-a-Park Program

- ❖ a way for environmentally conscious groups to complement and enhance the regular maintenance schedules of our Nanaimo Parks Staff in contributing to a cleaner, healthier, safer, invasive-free or controlled environment in our parks.
- ❖ available to non-profit community groups, corporate or private business groups, neighbourhood groups, social clubs or school groups.
- ❖ may including but not limited to litter pick up, graffiti removal, invasive plant removal, native plant restoration, wood mulch placement around trees, tree watering, park beautification, plant identification and barefoot mapping.

Program Benefits

- ❖ Allows local groups/clubs/schools to take an active role in stewardship of the City's parks and natural areas.
- ❖ Helps to keep our park system clean, safe and beautiful
- ❖ Provides an opportunity for team building within the involved group, club or school.
- ❖ Encourages community spirit and pride.

Great Parks Make Great Neighbourhoods!

- ❖ In return for this service, approved groups will receive public acknowledgement, certificate of appreciation, and Adopt-a-Park or work party sign with the sponsoring group's name may be placed in the park during work party

Program Recognition



Certificate of Appreciation

Presented to

Bill's Place

in recognition of valuable contributions to stewardship
and restoration in Nanaimo's parks and greenspaces.

Bill McKay
Mayor, City of Nanaimo

Ian Thorpe
City of Nanaimo Councillor/
Chair of Parks & Recreation Committee



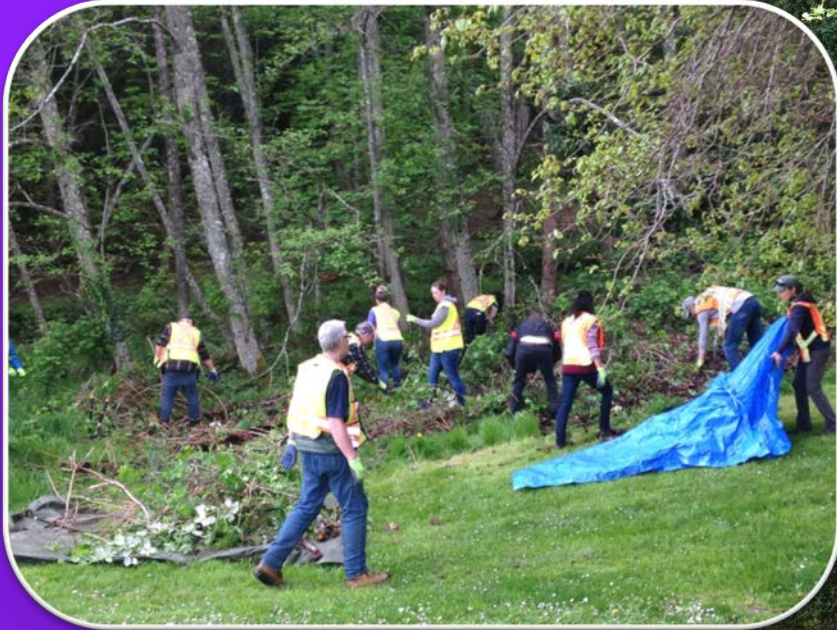
*Pipers Lagoon Park
Friday, May 5, 2017*

Testimonials

- ❖ *"Being a part of this program gives our clients a sense of community contribution and fulfillment, especially for those whose inability to return to work has been a difficult adjustment. We are also helping to reduce the stigma surrounding brain injury by showing that we all have the ability to contribute. Lastly, we view it as an opportunity for us to continually educate ourselves on our surroundings and grow." Support Worker*
- ❖ *"I think Piper's is one of the best beaches in Nanaimo, and I don't want people to see garbage when they go there. It makes me feel really happy when people approach us and thank us for the work we're doing." Andrew Frenchy (resident at Bill's place)*

Bill's Place, Piper's Lagoon

Bill's Place, Piper's Lagoon



Testimonials

- ❖ *“The Adopt a Park Program has been such a rewarding experience so far for the students at NUKO (Nanaimo Unique Kids Organization) ... this program ticks all the boxes in terms of targeting life skills for students with neuro-developmental disabilities. Each of the 6 students is becoming a more responsible citizen and have developed a greater awareness of the fauna and flora within the ecosystem of the park. They have worked collaboratively removing Himalayan Blackberry bushes and developed a stronger sense of personal safety using the equipment given to us by the City. Their social skills and self esteem have also improved. “*

NUKO, Brookwood Park

TD Bank, Bowen Park



Before



After



Elliot Sigmundson showing everyone just how it's done!



Ian Sigmundson and Erich Belanger hauling out yet another load of debris

Testimonials

- ❖ *“I believe our children need to feel connected to the land, for the mental, emotional, physical and spiritual well being.*
- ❖ *The forest is a place of healing, healing our eyes from fluorescent light exposure and instead offering us a myriad of hues and colours to soften our digital gazes.*
- ❖ *I take my students to work in the forest, so that they know that they are already part of the solution to our ailing planet. That they have already laid their hands on nature and given her the love that she requires to sustain us humans and the rest of the creatures that dwell here.*
- ❖ *We work in the forest because we are modelling to others that we must care for these spaces. They give us our health, and have been undervalued because we take them for granted and don't realize that they make us who we are. They feed our lungs, they clean our waters, they are home to so many forms of life. “*

Discover Montessori School, Beaufort Park

Discover Montessori



Adopt-a-Park Groups

Started Winter/Spring 2017

- Bill's Place – Piper's Lagoon
- Discover Montessori – Beaufort Park
- TD Financial – Bowen Park
- NUKO – Brookwood Park

Getting involved this fall

- CLARO – Beban Park
- Brechin School – Bowen Park
- Hammond Bay School – Neck Point Park



...and this is just the beginning

Recreation Services

Aquatics, Arenas and
Community Programming

Parks & Recreation



Community Programming

- Early Years
 - Children
 - Youth
 - Adult
- Active Ageds (60 +)
- Spring Break and Summer Programs
 - Special Events/Projects

Early Years (1-5 yrs) & Children's Programs (6-12 yrs)



- Play & Learn programs
- Dance, Arts & Crafts programs
- Music, Sport programs
- Special Interest programs
- Family programs

Youth



- Training
- Special Interest
- Sports
- Leaders in Training & Quest
- Youth Week
- Spare Blox & Youth Lounge

Adult



- Arts and Crafts/Pottery
 - Cooking
 - Dance
 - First Aid
- Fitness and Wellness
 - Language
 - Music
- Special Interest

Active Agers

- Harbour City Seniors – membership
- Active agers membership programs
- Volunteer versus paid instructors
- Special events

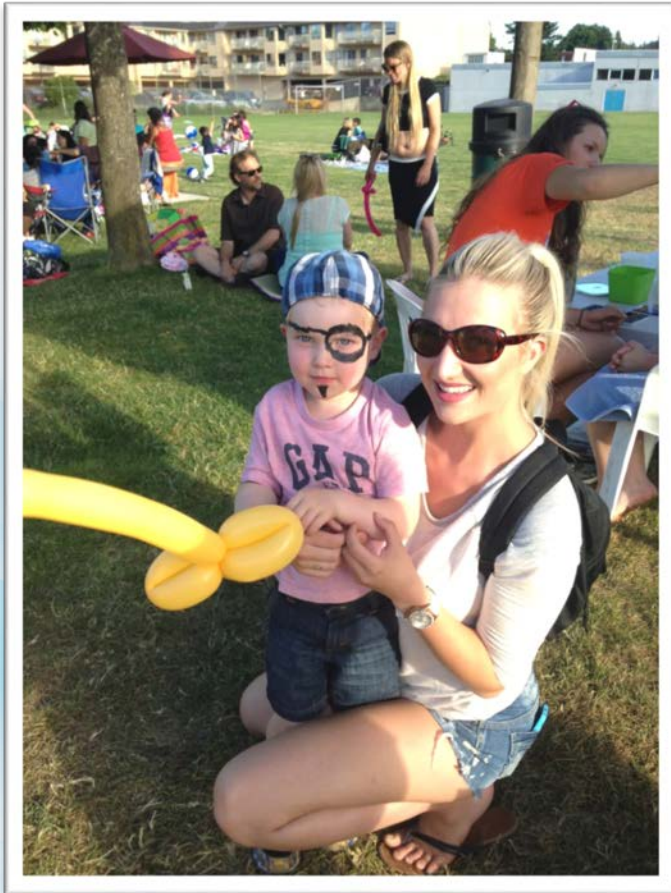


Spring Break and Summer Programs



- Summer Daycamps
- Playgrounds
- Programs

Special Events



- Finale
- Family Fun Days
- Healthamoungus
- Canada Day
- Summer Concert Series
- Earth Day
- Family Fishing Day
- Rivers Day

Special Projects

- Home Town Hockey
- Island Health Grant – (5210, Play & Ride, Specialty fitness instructor training, seniors fitness programs)
- Active Pass Grade 5 & 6
 - Canada 150
 - Playlist 150
 - Pitt Crew



Recreation Software Update



Perfect**Mind**

Parks & Recreation



Nanaimo's Waterfront Walkway Overview Presentation

Parks, Recreation & Wellness Committee

2017-June-28



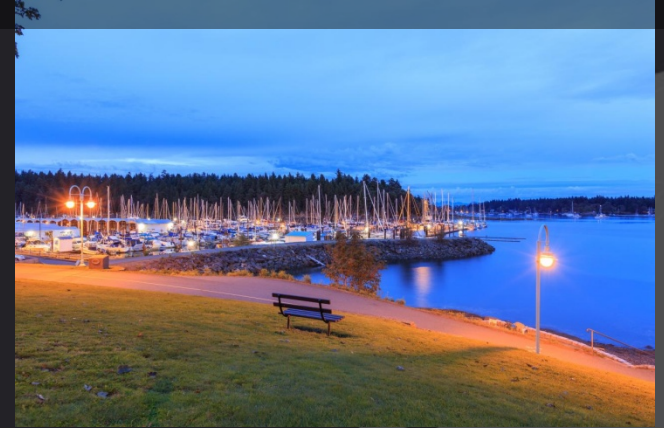


Tonight

- Project Overview
- What's been built
- Existing walkway plans
- Opportunities
- Open House & Survey Results
- Next Steps



Vision: Create a Continuous Walkway from Departure Bay to the Estuary



Departure Bay

NEWCASTLE
ISLAND

Newcastle Channel

Downtown

SFN

Estuary

VANCOUVER
ISLAND

Waterfront Walkway Sections

1

2

3

4

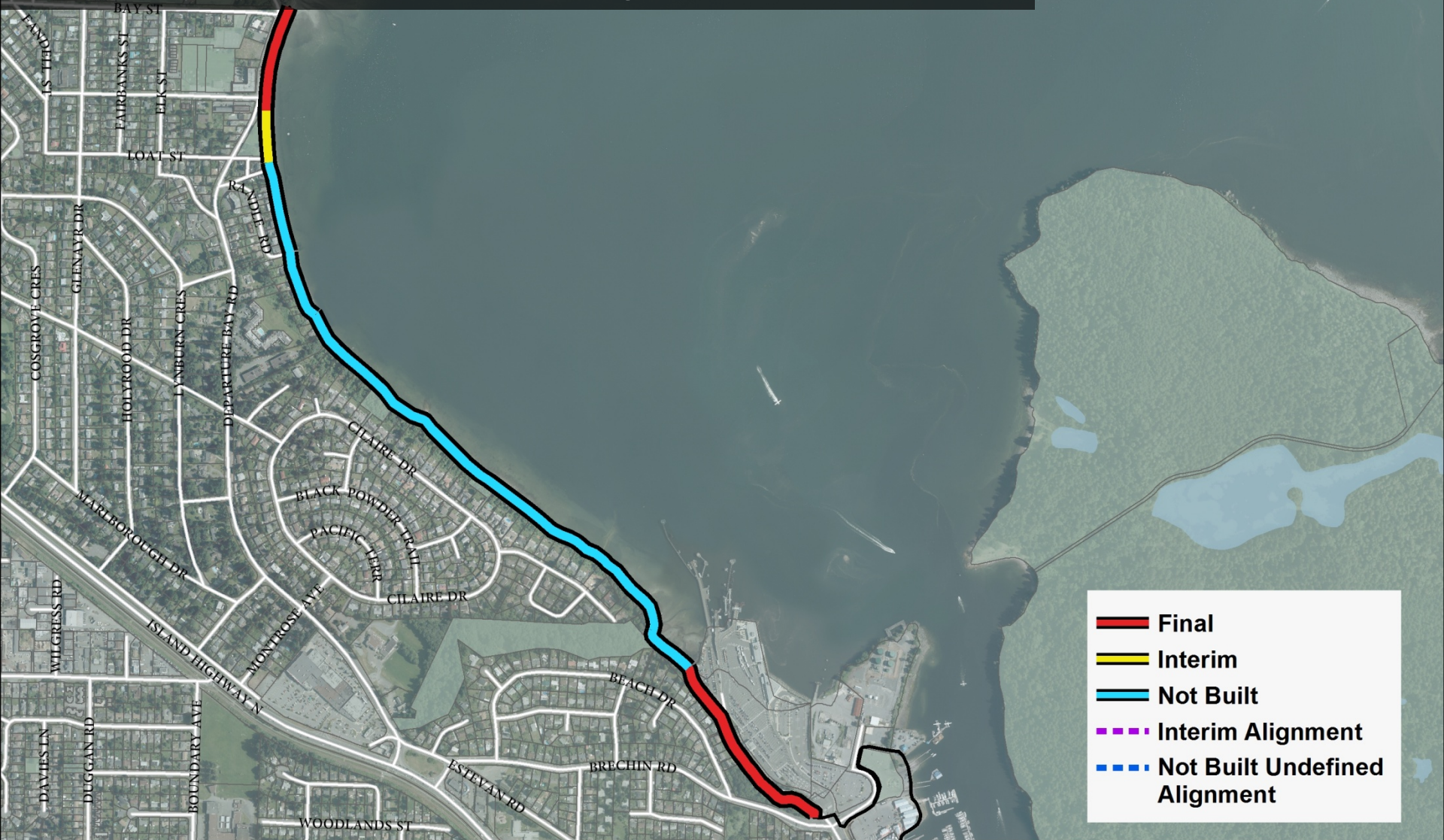
5

6

What's Built



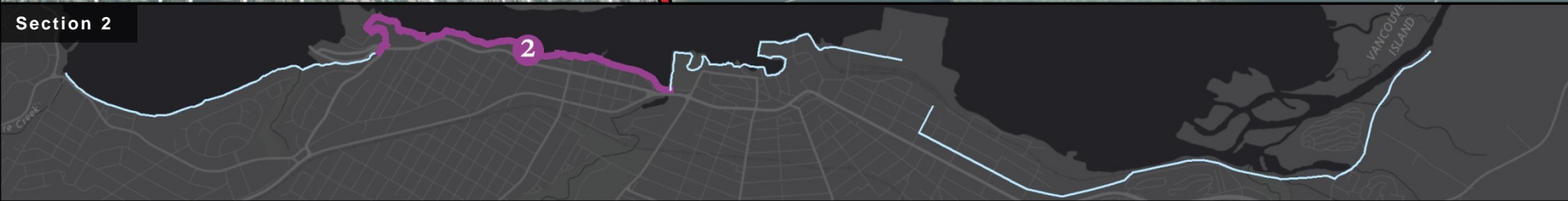
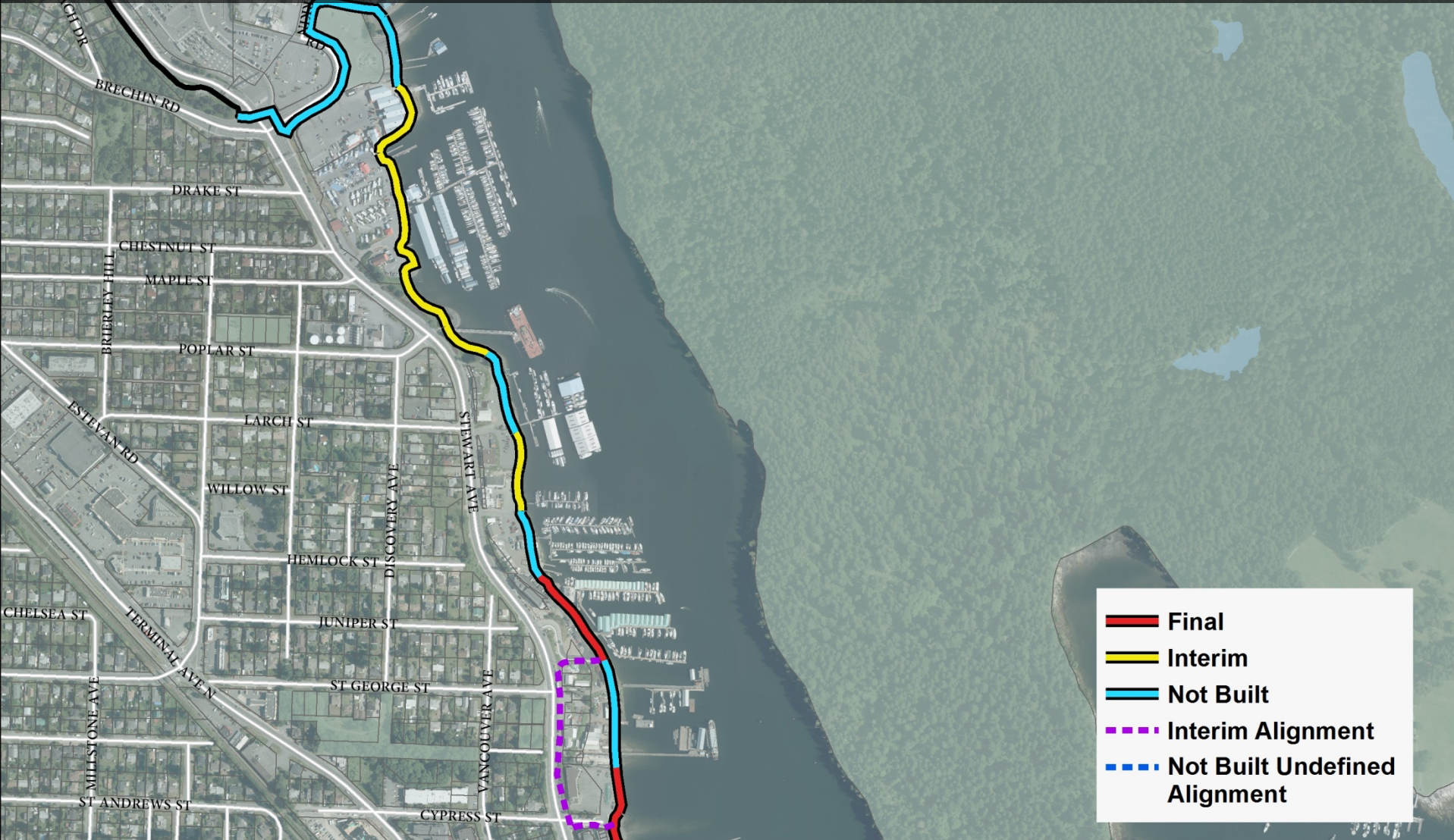
Section 1-Departure Bay to BC Ferries



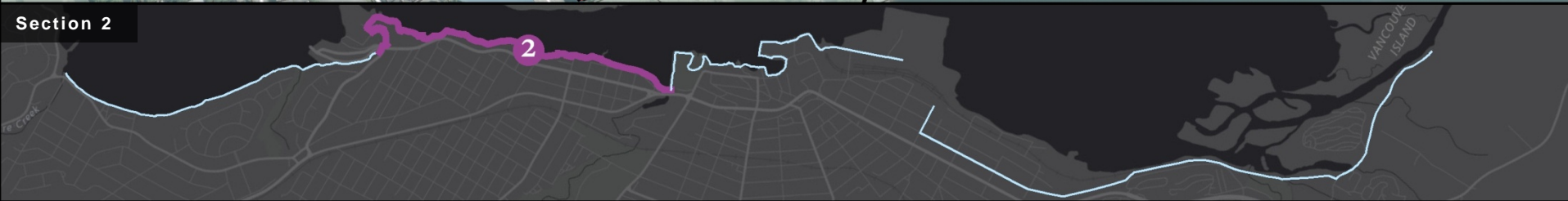
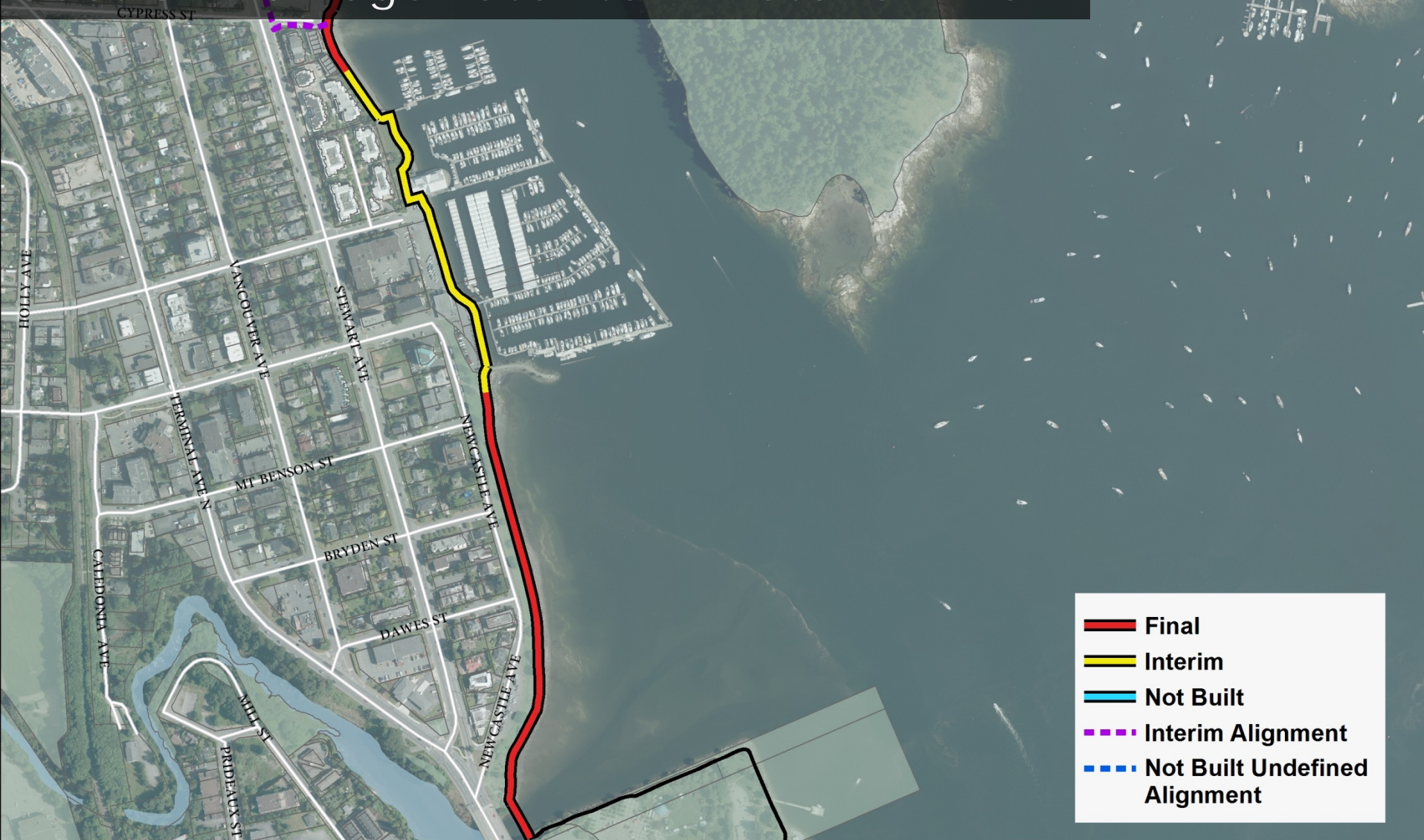
Section 1



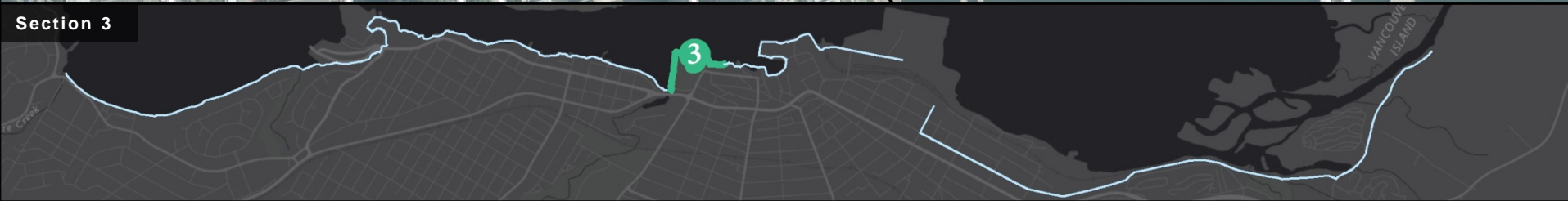
Section 2a-Brechin Boat Ramp to Waterfront Suites



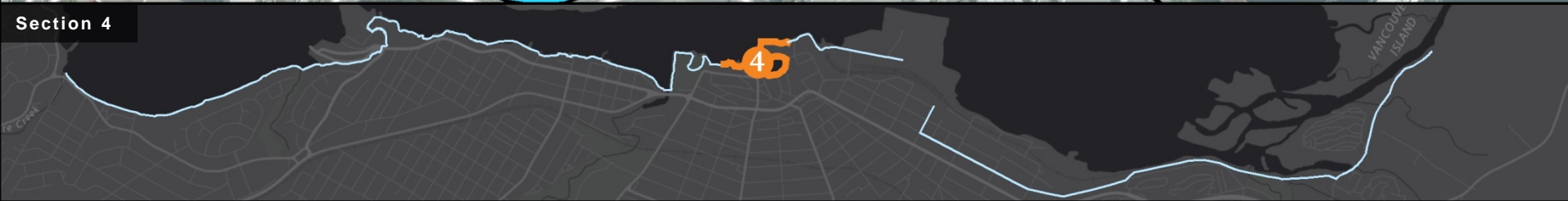
Section 2b-Edgewater to Millstone River



Section 3-Maffeo Sutton Park to Pacifica



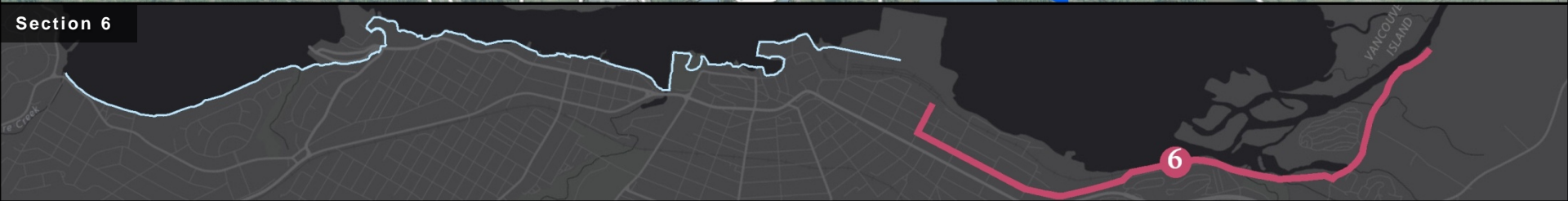
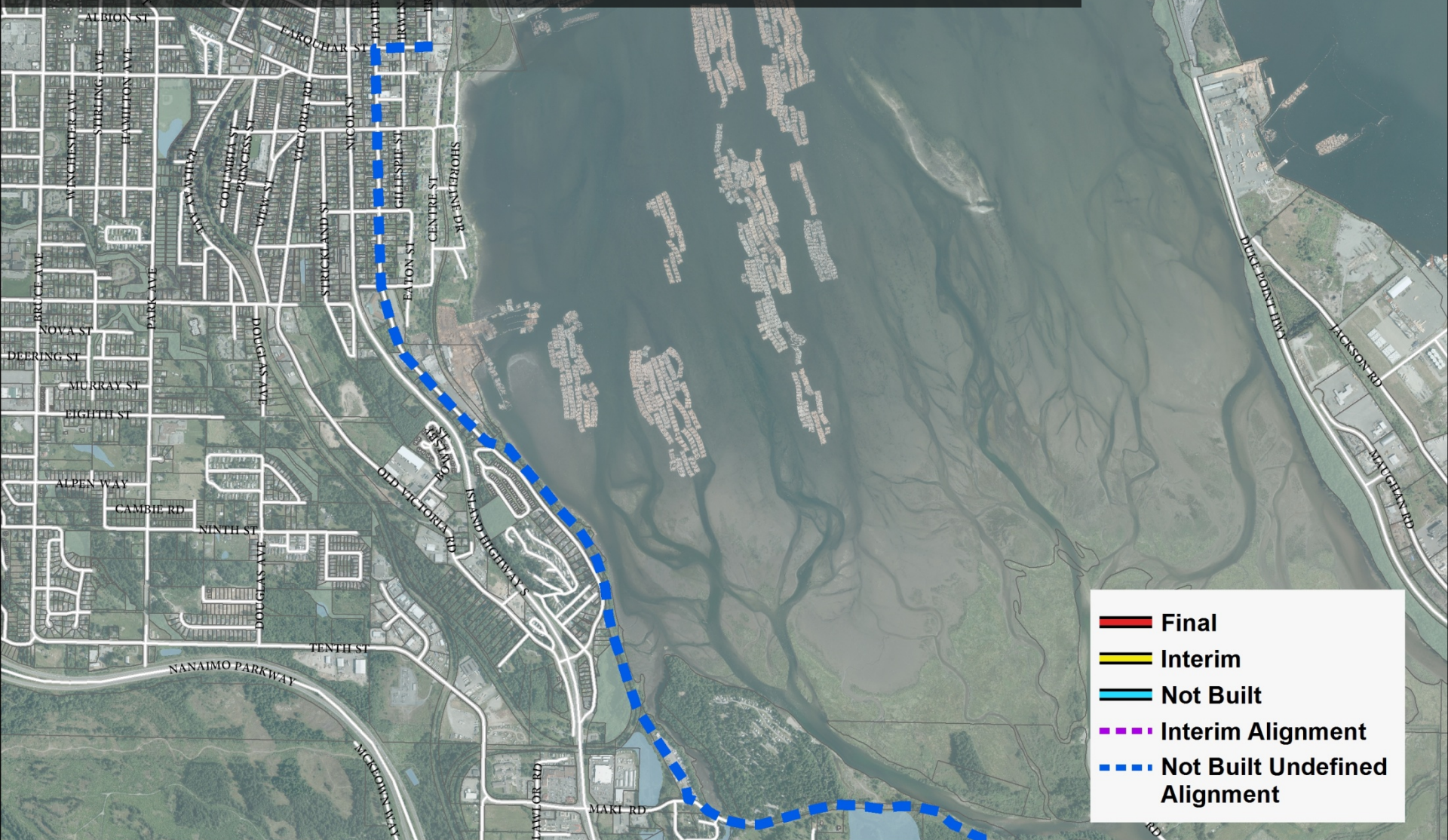
Section 4-Boat Basin to Cameron Island



Section 5-Cameron Island to South Downtown Waterfront



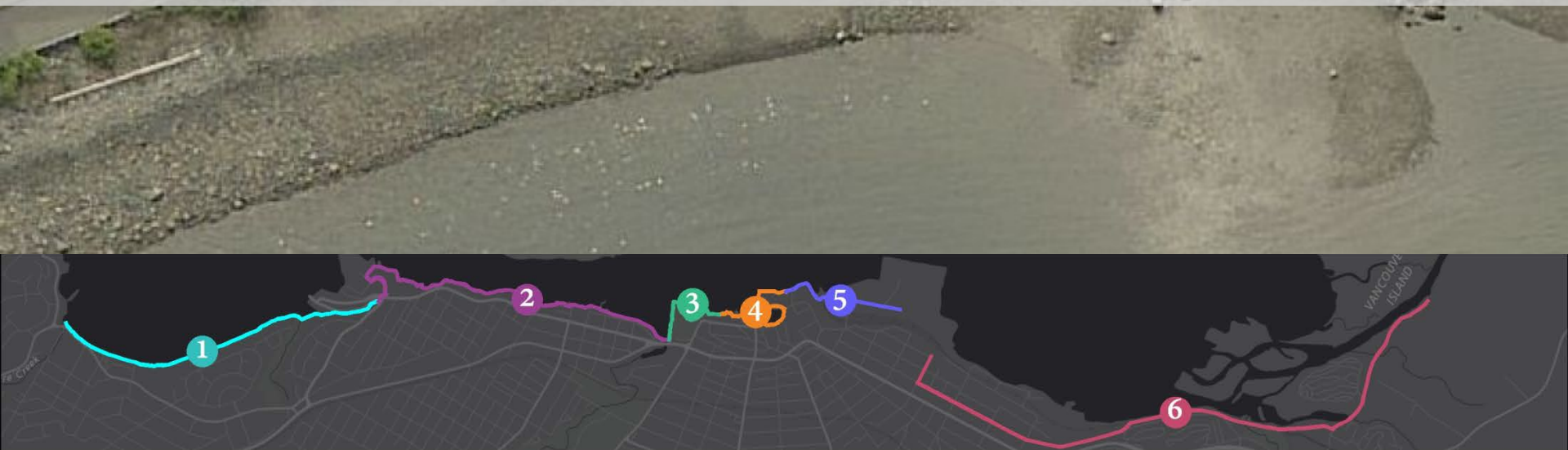
Section 6-Assembly Wharves to Estuary





Five Short Term Opportunities

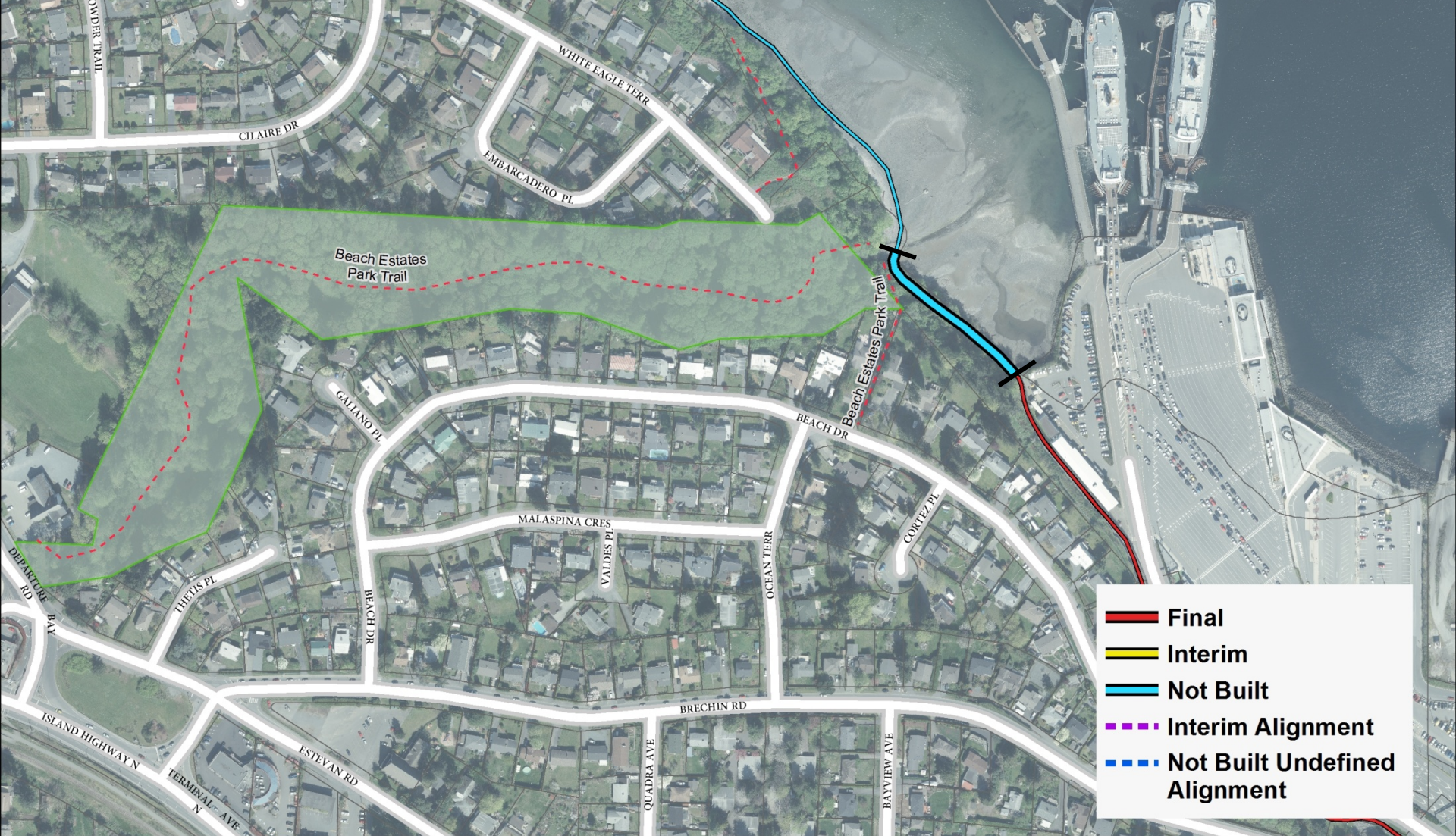
- Adjacent to existing completed sections
- Extend the walkway
- Complete gaps
- Can be delivered in 2 years (by end of 2018)
- Budgeted \$2.5m for these sections



Section 1.5-Northfield Creek to BC Ferries



Section 1.5-Northfield Creek to BC Ferries



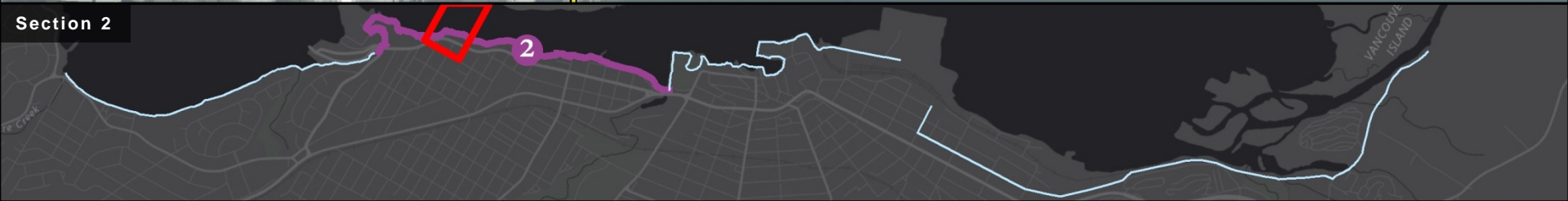


© 2016 Pictometry



Waterfront Walkway Sections

Section 2.5-Asia Pacific Yacht Club





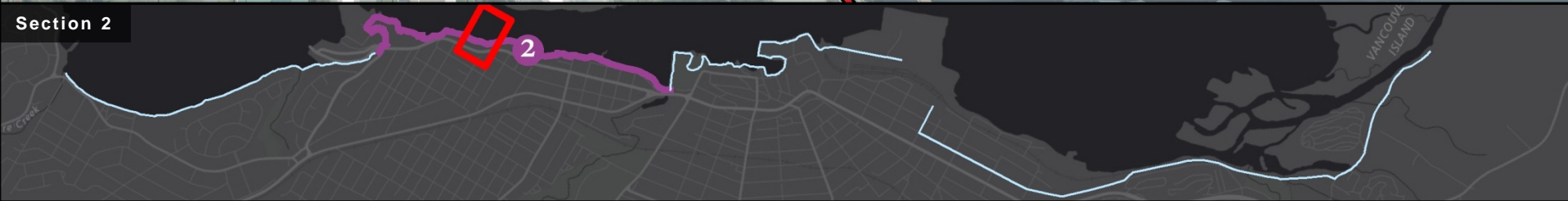
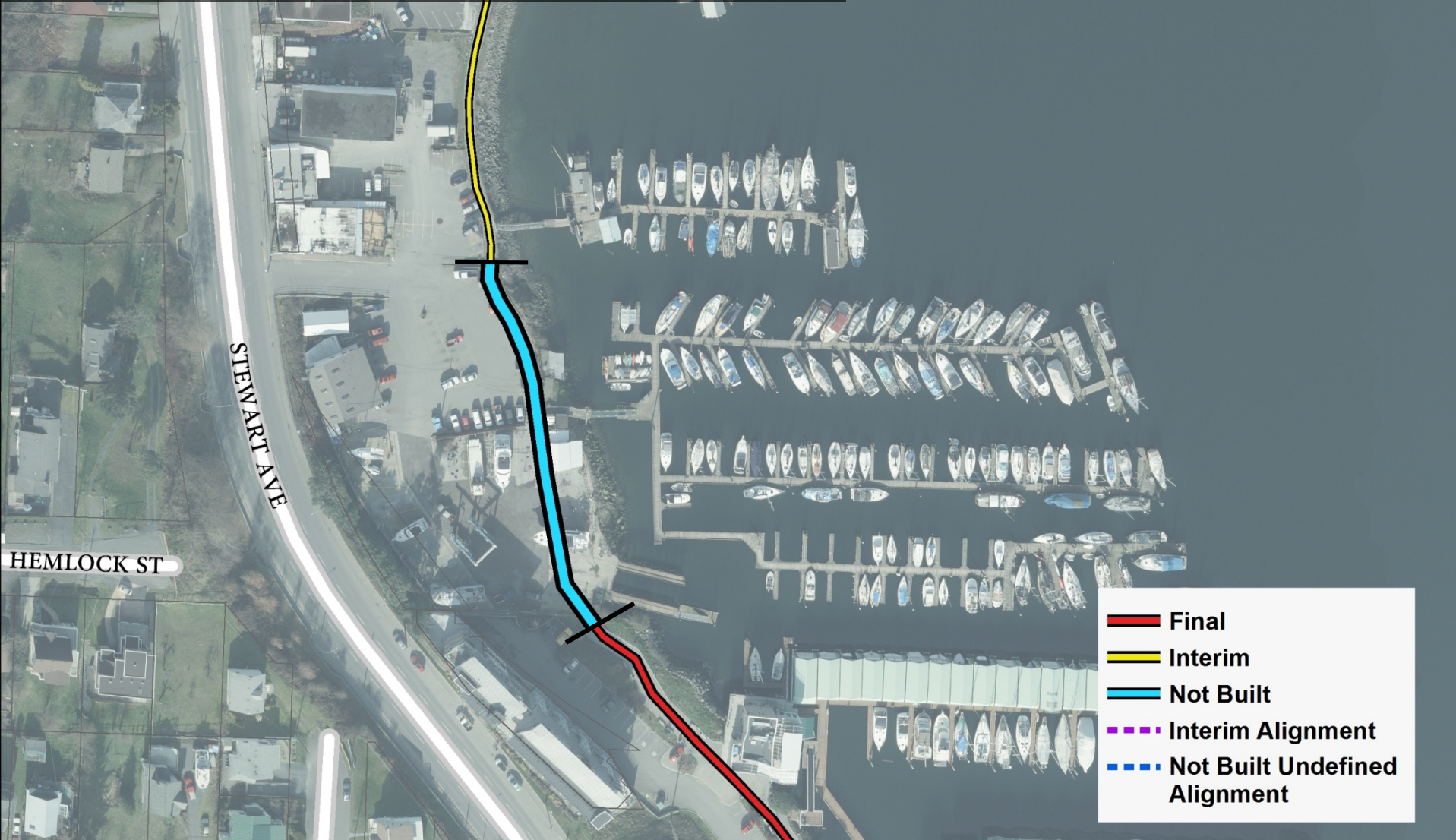
05/14/2016

© 2016 Pictometry

Waterfront Walkway Sections



Section 2.7-NewCastle Marina





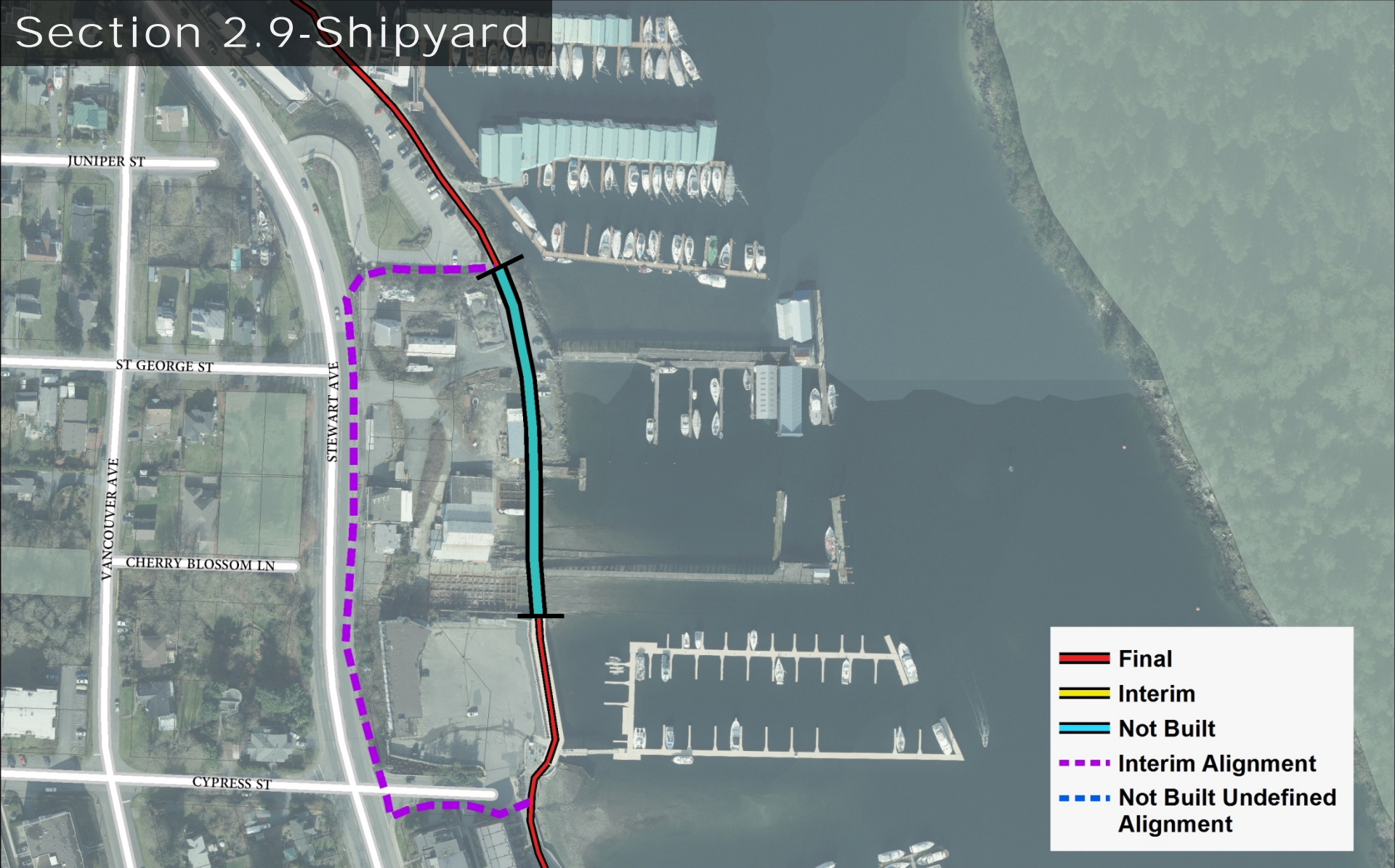
05/14/2016

© 2016 Pictometry

Waterfront Walkway Sections

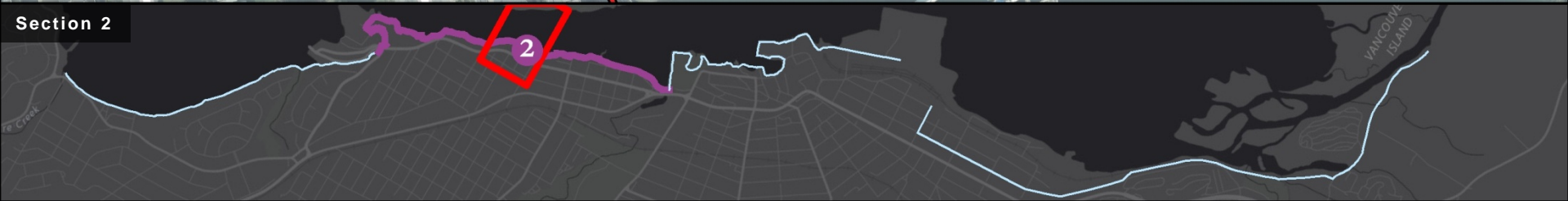


Section 2.9-Shipyard



- Final**
- Interim**
- Not Built**
- Interim Alignment**
- Not Built Undefined Alignment**

Section 2





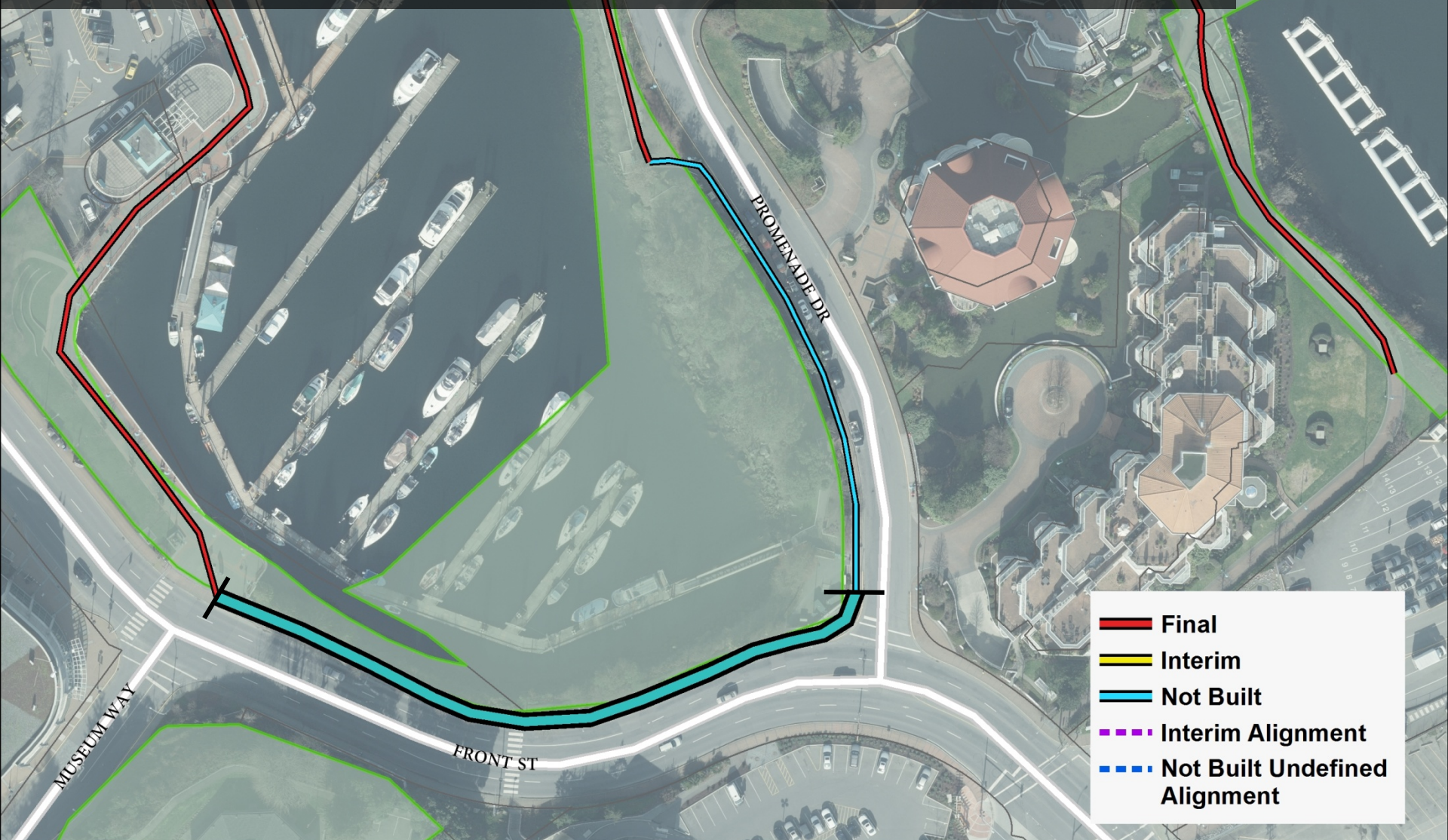
05/14/2016

© 2016 Pictometry

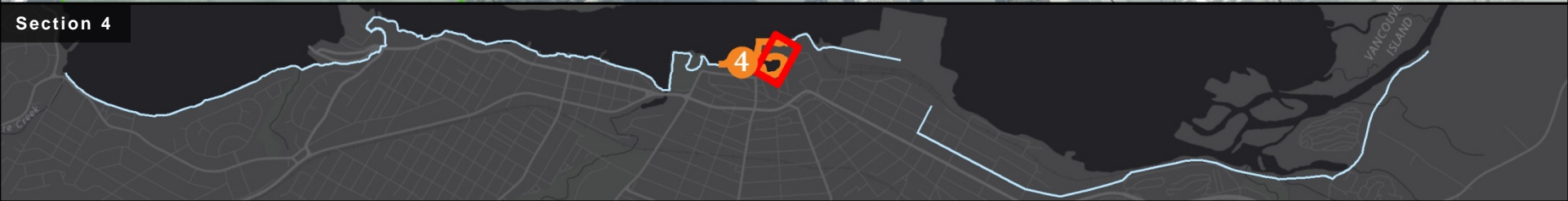
Waterfront Walkway Sections



Section 4.4-McGregor Park to Cameron Island



Section 4





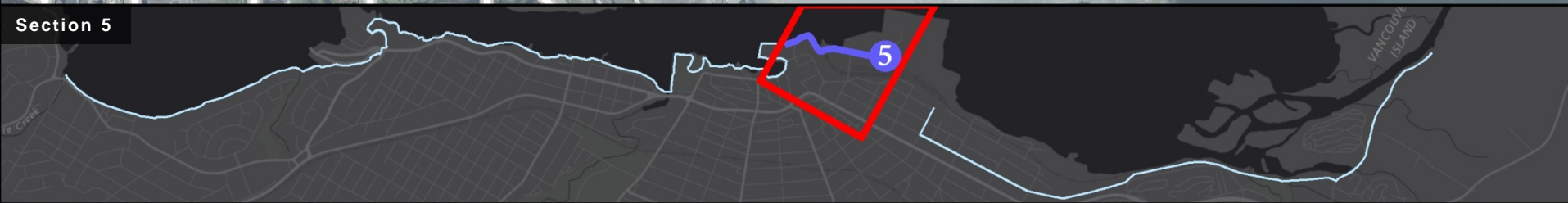
05/09/2016

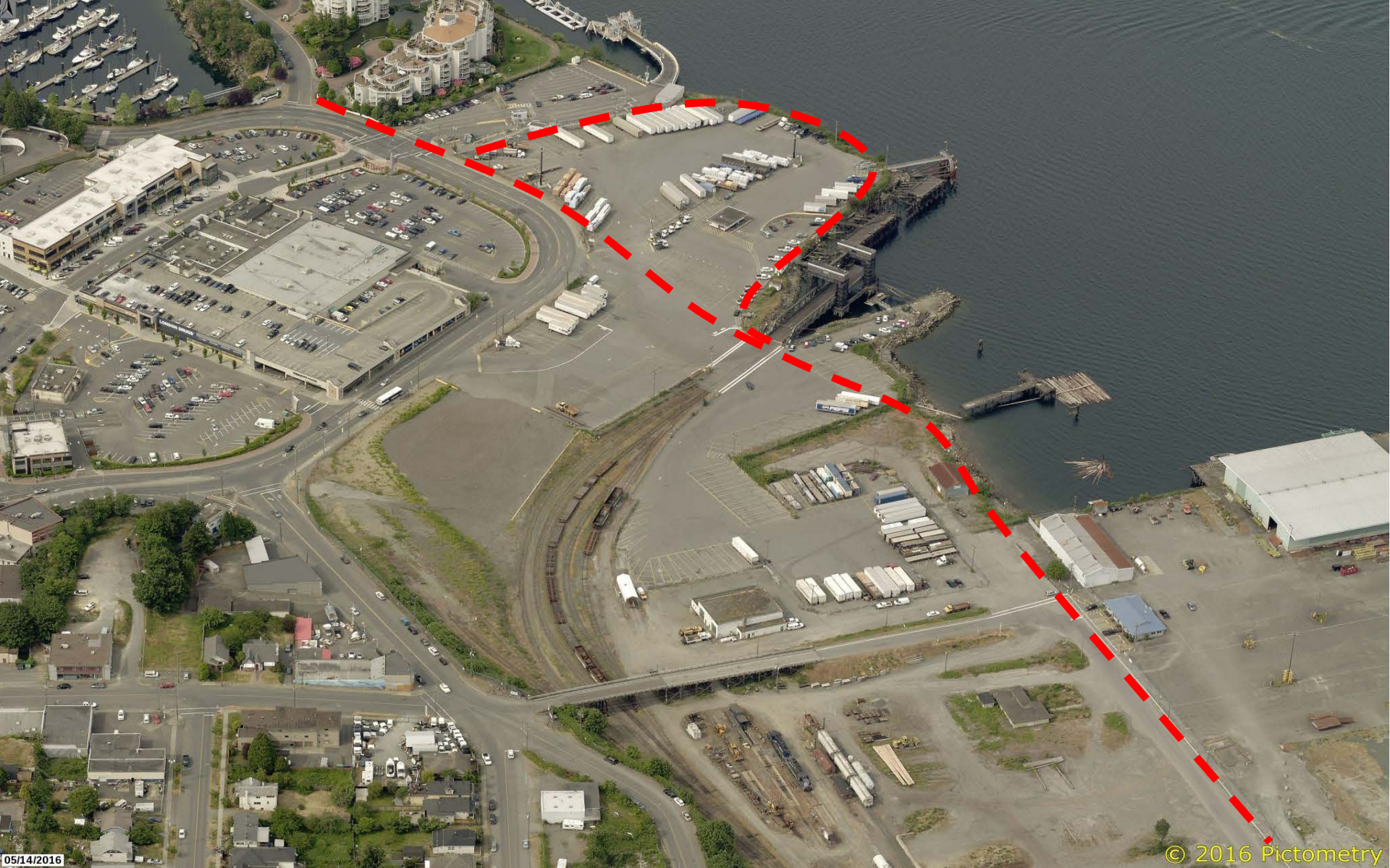
© 2016 Pictometry



Waterfront Walkway Sections

Section 5.2- 1 Port Drive





05/14/2016

© 2016 Pictometry

Waterfront Walkway Sections





Current Initiatives

- \$150k funding in place to undertake Walkway Implementation Plan.
- Hired consultant team – led by Urban Systems
- Upcoming independent projects:
 - 1 Port Drive (2017)
 - Nanaimo Yacht Club expansion (2018)

Public Open Houses

- Wednesday May 17 – Kin Hut
- Thursday May 18 – Maffeo Sutton Park
- Saturday May 20 – Kin Hut



Paper & Online Survey

- 1900 responses
- Priority sections:
 - Departure Bay to BC Ferries (25%)
 - Newcastle Channel (24%)
- 89% of people would like to see walkway extended over upgrading existing sections





Design Workshop

- June 22, 2017
- 50 participants 1pm to 4:30pm
- Public open house 5-7pm
- Initial look at alignment, width, style and options
- Information to inform consultant team

Next Steps

- Summer 2017 – conceptual design work
- September 2017 – Public Open Houses on draft implementation plan.
- October 2017 – Final plan presented to Council for approval.

